

Inspection Photos

Location Name: Simcoe Walter Owens A1

Location ID: 333575 API 05-067-07767



1. Well sign.

2. Entrance to well pad. Well sign on right.

Inspection Photos

Location Name: Simcoe Walter Owens A1

Location ID: 333575 API 05-067-07767



3. View of access road from location looking east towards HWY 550.

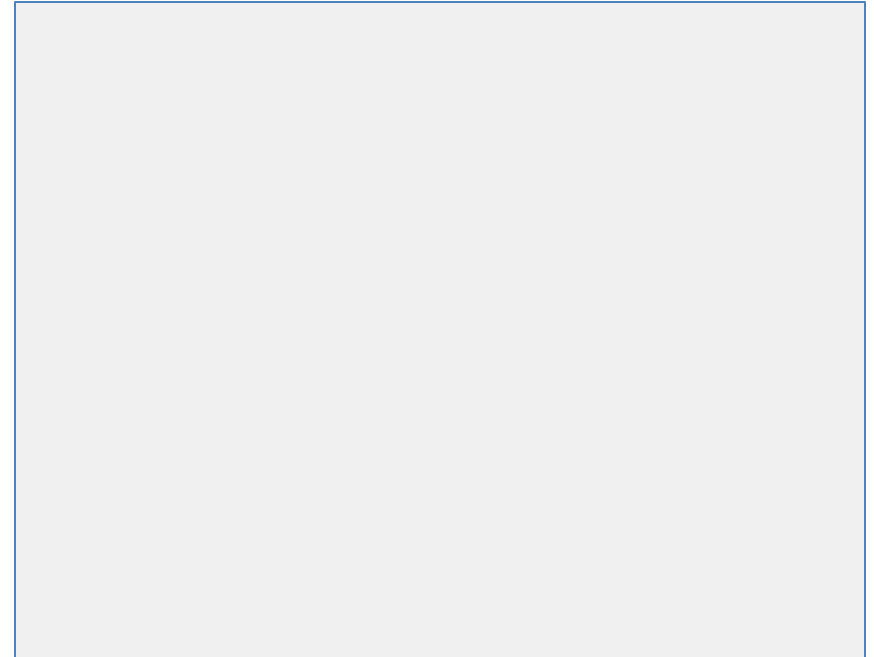


4. View of access road from intersection with HWY 550 looking west towards location.

Inspection Photos

Location Name: Simcoe Walter Owens A1

Location ID: 333575 API 05-067-07767



5. Detail of FEMA Floodplain website. Pin is location of well. Entire location is in flood zone. See full map linked in attachments section.

6. Deleted.

Inspection Photos

Location Name: Simcoe Walter Owens A1

Location ID: 333575 API 05-067-07767



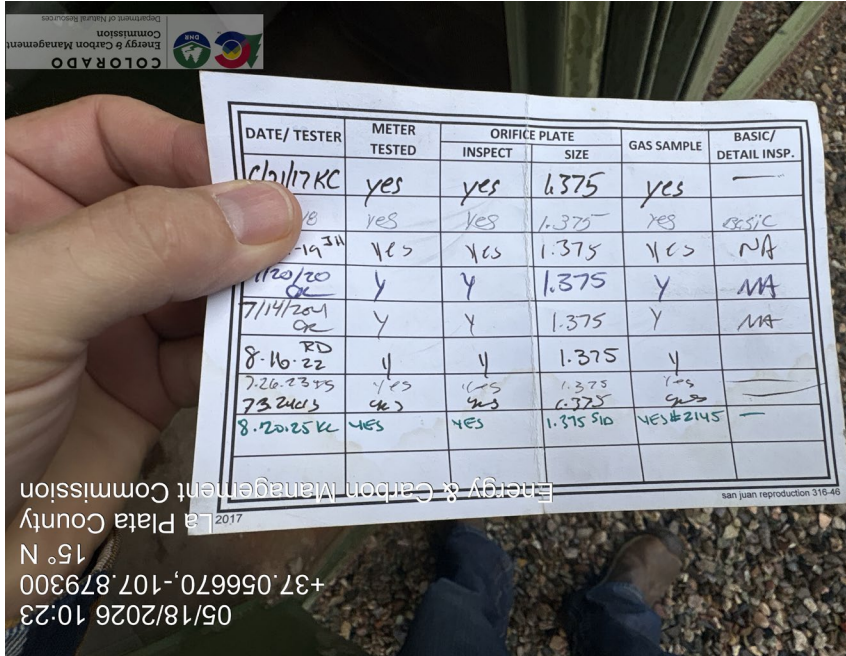
7. Wellhead. Note dead vegetative debris in fence.



8. Wellhead.

Inspection Photos

Location Name: Simcoe Walter Owens A1
Location ID: 333575 API 05-067-07767



9. Meter calibration card. 8/20/2025.

10. Meter run and vertical heated separator. Separator is anchored by turnbuckles connected to buried concrete and also by flow lines.

Inspection Photos

Location Name: Simcoe Walter Owens A1

Location ID: 333575 API 05-067-07767



11. Compressor station with 2 stage silencer.

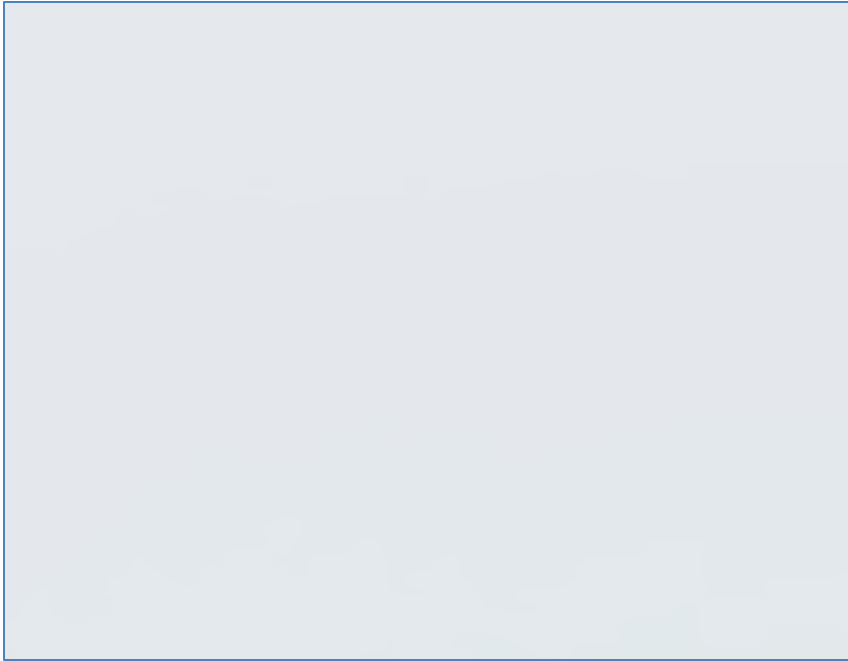


12. Two stage silencer is disconnected.

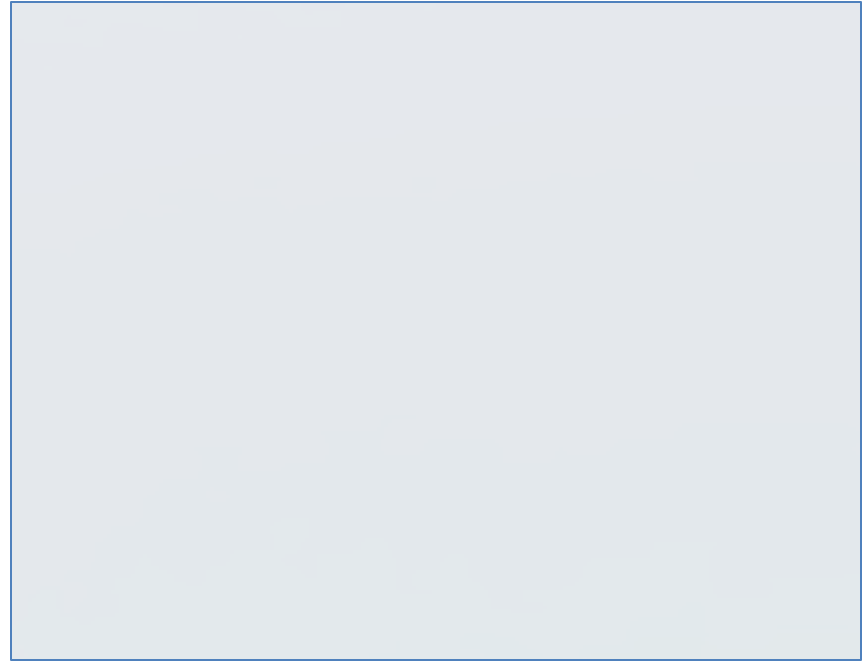
Inspection Photos

Location Name: Simcoe Walter Owens A1

Location ID: 333575 API 05-067-07767



13. Deleted

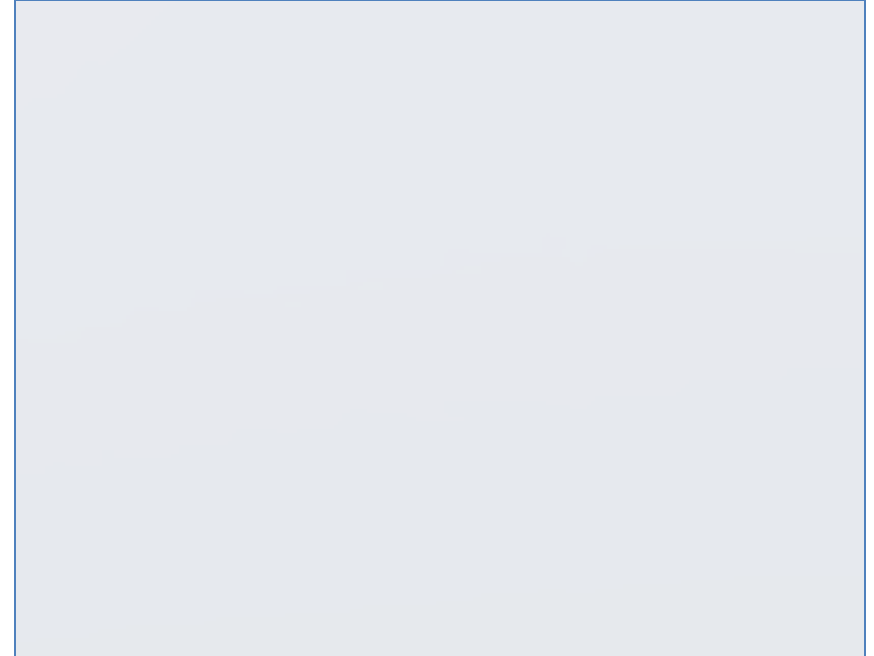


14. Deleted.

Inspection Photos

Location Name: Simcoe Walter Owens A1

Location ID: 333575 API 05-067-07767



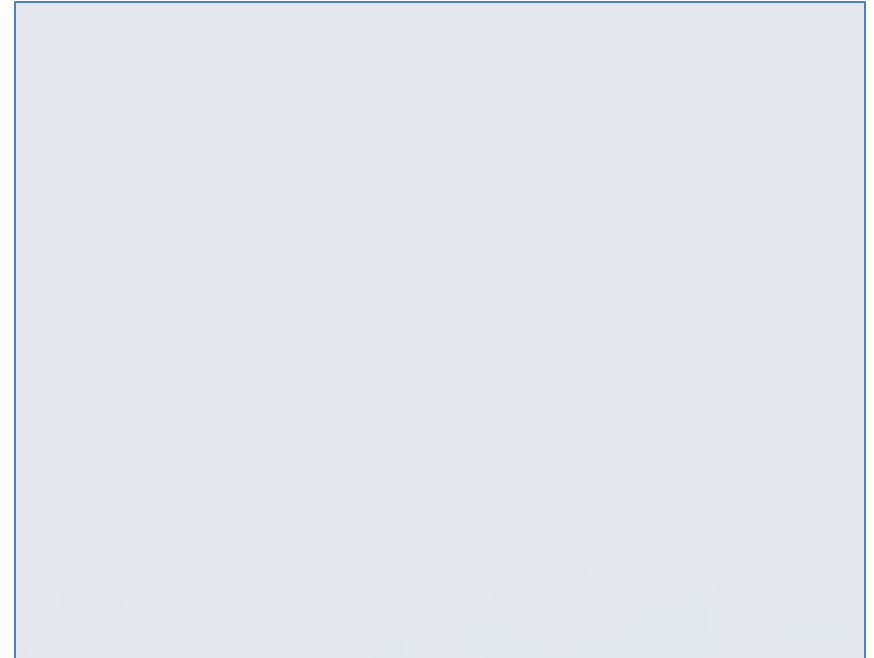
15. North side of compressor station looking south showing a midstream gas valve and regulator manifold on concrete pad and a chemical injection system on top of spill containment.

16. Deleted.

Inspection Photos

Location Name: Simcoe Walter Owens A1

Location ID: 333575 API 05-067-07767



17. Chemical treatment container over spill prevention with solar telemetry on top of spill prevention. Manufacturer's labels not legible. Contents unknown. Est Vol ~50 gal.

18. Deleted.

Inspection Photos

Location Name: Simcoe Walter Owens A1

Location ID: 333575 API 05-067-07767

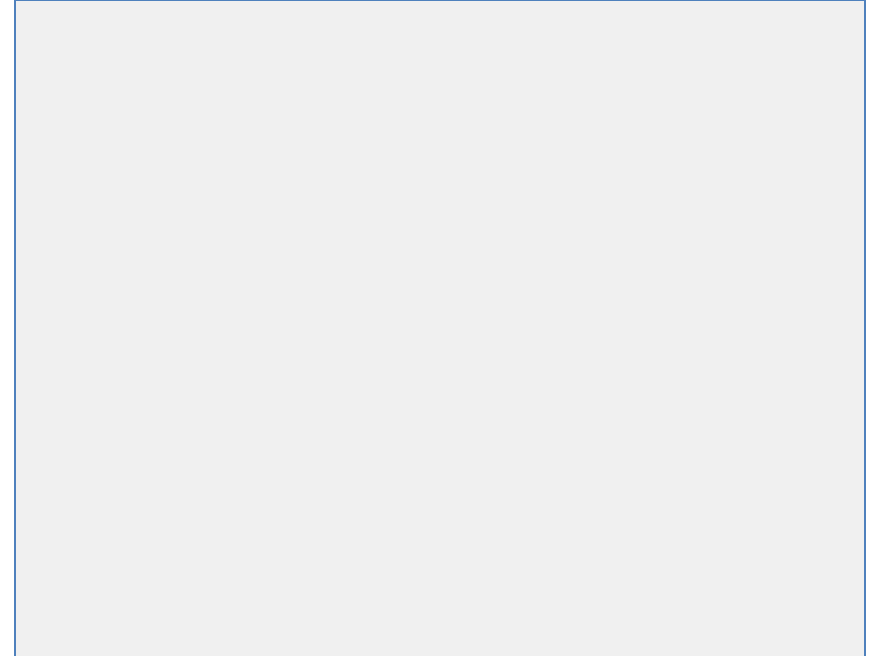


19. View of outside of compressor station. Liner debris observed.



20. View of east side of compressor station looking west. Cooling system on right.

Inspection Photos
Location Name: Simcoe Walter Owens A1
Location ID: 333575 API 05-067-07767



21. Skid mounted compressor (left) next to station structure lacks muffler and is noisy.

22. Deleted.

Inspection Photos

Location Name: Simcoe Walter Owens A1

Location ID: 333575 API 05-067-07767



23. Exhaust stack on compressor is missing muffler. Yellow arrow shows flexible exhaust pipe remnants. Loud.



24. Muffler resting on ground. Unattached.

Inspection Photos

Location Name: Simcoe Walter Owens A1

Location ID: 333575 API 05-067-07767



25. Segments of exhaust tubing from compressor. Also shows open ended lube oil hose from lube oil tank



26. Frayed, disconnected wires protruding form conduit near skid mounted compressor.

Inspection Photos

Location Name: Simcoe Walter Owens A1

Location ID: 333575 API 05-067-07767



27. 21 BBL PBV tank in secondary containment showing single anchor tied down point observed. Paint on tank inadequate.



28. Anchor tie down point for 21 BBL PBV tank.

Inspection Photos

Location Name: Simcoe Walter Owens A1

Location ID: 333575 API 05-067-07767



29. UPDATE – nearby location visited after report completed and noticed sign replaced. No corrective action.

30. Grounding wires near tank. Appear to belong to equipment no longer present.

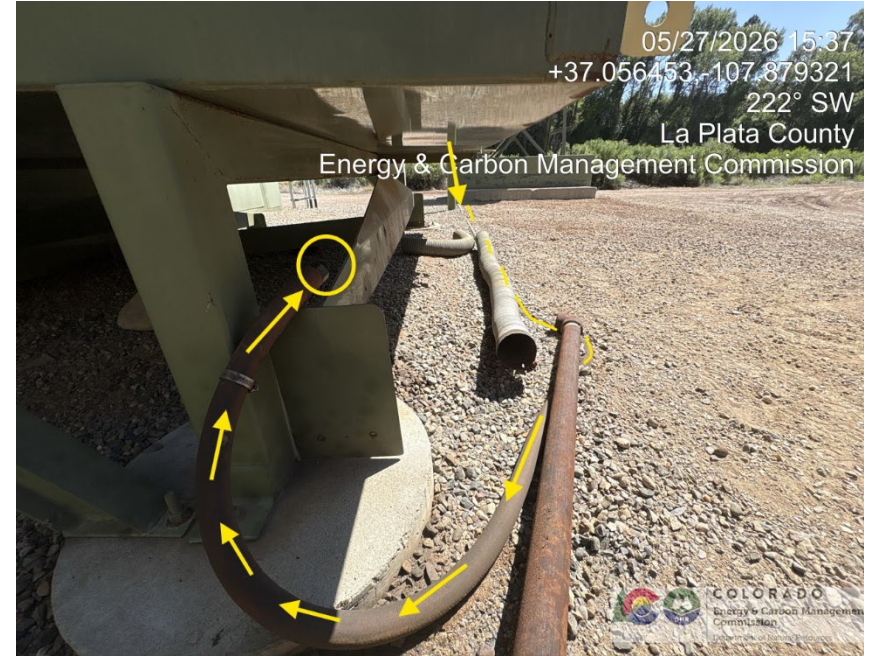
Inspection Photos

Location Name: Simcoe Walter Owens A1

Location ID: 333575 API 05-067-07767



31. Lube oil tank on secondary containment. Is not anchored for potential flooding. There is a ball valve drain at the base connected to an open-ended rubber hose that rests on the ground several yards away. See photo 32



32 Lube oil hose can only be operated at the valve by the base of the tank shown in figure 31. The valve is attached to an ~1" pipe, and then flexible hose that is cut off at one end. There is a bolt loosely stuck in the open end of the hose, not tight enough to stop flow if the valve were turned on, the whole tank could drain quickly. Yellow arrows show path of tubing from tank in background to end of hose with no valve nozzle in yellow circle. Photo also shows unused flexible exhaust tubing and unused pipe segments.

Inspection Photos

Location Name: Simcoe Walter Owens A1

Location ID: 333575 API 05-067-07767



33. Chemical injection tank, 8 inch gas line with 19" blank flange.



34. 1" Conduit

Inspection Photos

Location Name: Simcoe Walter Owens A1

Location ID: 333575 API 05-067-07767



35. Glycol/antifreeze tank with spill prevention. Sight glass cloudy, unknown if contains product. In floodplain. Not anchored. Appears like it may not be in use.



36. Area overview looking northeast from southwest portion of production area.

Inspection Photos

Location Name: Simcoe Walter Owens A1

Location ID: 333575 API 05-067-07767



37. Chemical injection container. Manufacturer's label not legible. Contents unknown.



38. Detail of chemical injection container controls. Some stainless tubes disconnected. Unclear if in-use.

Inspection Photos

Location Name: Simcoe Walter Owens A1

Location ID: 333575 API 05-067-07767



39. Vertical heated separator and associated flow lines. Appears to be anchored in at least 3 locations by turnbuckles attached to concrete pilings buried in the ground.



40. Vertical heated separator.

Inspection Photos

Location Name: Simcoe Walter Owens A1

Location ID: 333575 API 05-067-07767



41. Shed structure. Door latch is locked or does not work. Contents unknown. Solar telemetry. Possibly midstream.



42. Skid mount compressor on right appears to be fed by 2 inch gas line on surface from equipment on left side of photo. Unused equipment in center of photo against wall.