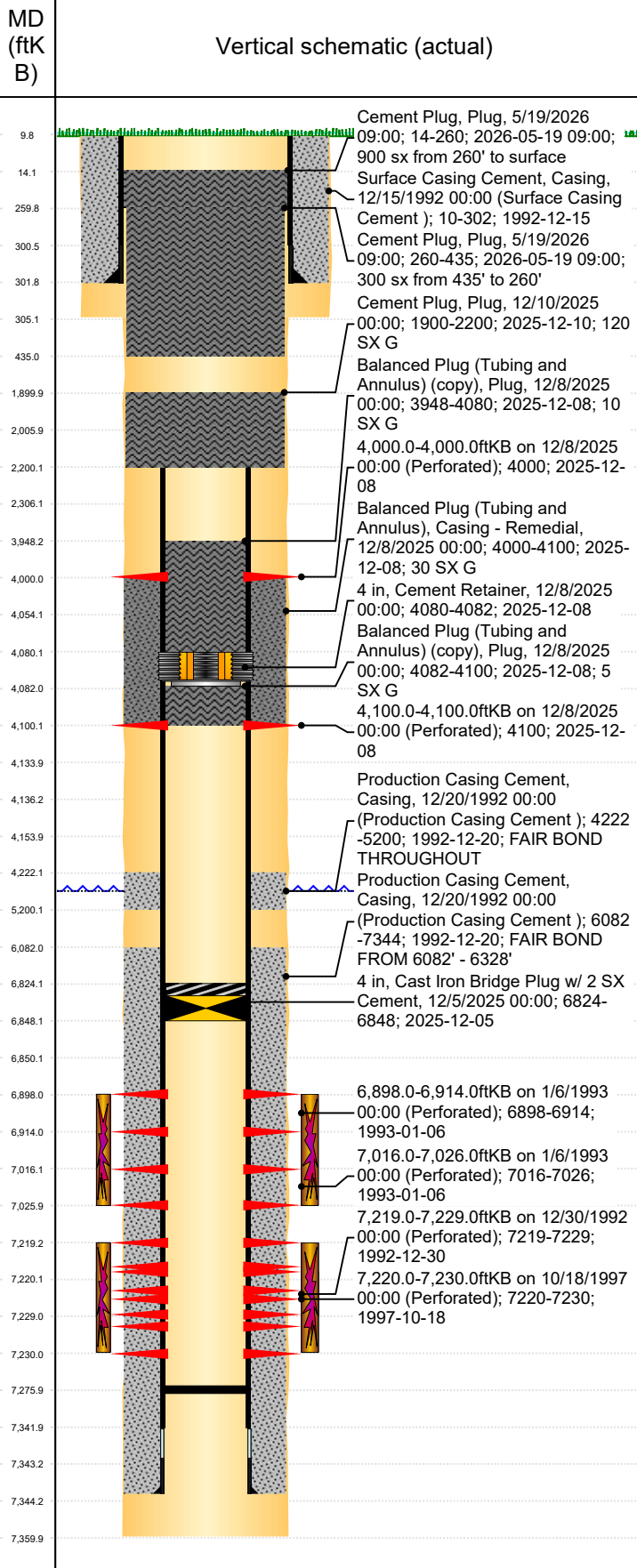




P&A Wellbore For State

Well Name: CLEMENT 14-11

ORIGINAL HOLE [Land]



Well Header									
Surface UWI 0512316483		Business Unit Rockies		Gov Auth Dist Evans		Prod Tree Loc Land			
Orig. KB to Gnd (ft) 10.00		Original Spud Date 12/15/1992		Abandon Date		Well Sub-Status AB		High...	
								N	
Comment WELL DATA IS SPARSE AND SKETCHY.									
TD DISCREPANCY: DRL RPTS & OPEN HOLE LOGS = 7360. ST RPT = 7349									
COMPLEX WELL									
Surface Location (Congressional)									
Qtr 3 SW	Qtr 4 SW	Section 11	Twnshp 4	Twnsh... N	Range 66	Rng E/... W	Latitude (°) 40.32059	Longitude (°) -104.7517972	
Wellbore Sections									
Section Des		Hole Size (in)		Top Depth (ftKB)		Btm Depth (ftKB)			
SURFACE		12 1/4		10.0		305.0			
PRODUCTION		7 7/8		305.0		7,360.0			
Casing Strings									
Csg Des		Run Date		OD (in)		Wt/Len (lb/ft)		Grade	
Surface		12/15/1992		8 5/8		24.00		10	
Production		12/20/1992		4 1/2		11.60		WC-70	
Cement									
Des		Start Date		Top (ftKB)		Btm (ftKB)			
Surface Casing Cement		12/15/1992		10.0		302.0			
Production Casing Cement		12/20/1992		4,222.0		5,200.0			
Production Casing Cement		12/20/1992		6,082.0		7,344.0			
Balanced Plug (Tubing and Annulus)		12/8/2025		4,000.0		4,100.0			
Balanced Plug (Tubing and Annulus)		12/8/2025		3,948.0		4,080.0			
Balanced Plug (Tubing and Annulus)		12/8/2025		4,082.0		4,100.0			
CEMENT PLUG		12/10/2025		1,900.0		2,200.0			
Cement Plug		5/19/2026		14.0		260.0			
Cement Plug		5/19/2026		260.0		435.0			
Zone Statuses									
Zone Name		Status Date		Status		Fluid Type		Job	
NIOBRARA		3/2/2017		PR					
NIOBRARA		12/5/2025		Closed				Abandon Well - Temporary, 12/4/2025 00:00	
CODELL		11/29/2016		SI					
CODELL		12/5/2025		Closed				Abandon Well - Temporary, 12/4/2025 00:00	
Perforation Data									
Linked Zone		Explosive Type		Entered Shot Total		Top (ftKB)		Btm (ftKB)	
NIOBRARA, ORIGINAL HOLE		B		16		4,000.0		4,000.0	
NIOBRARA, ORIGINAL HOLE		C		10		4,100.0		4,100.0	
NIOBRARA, ORIGINAL HOLE				20		6,898.0		6,914.0	
CODELL, ORIGINAL HOLE				10		7,016.0		7,026.0	
CODELL, ORIGINAL HOLE				20		7,219.0		7,229.0	
CODELL, ORIGINAL HOLE				30		7,220.0		7,230.0	
Stim/Frac Stage									
Zone		Start Date		Top (ftKB)		Btm (ftKB)			
NIOBRARA, ORIGINAL HOLE		1/6/1993		6,898.0		7,026.0			
CODELL, ORIGINAL HOLE		12/31/1992		7,219.0		7,229.0			
CODELL, ORIGINAL HOLE		12/8/2001		7,219.0		7,230.0			
CODELL, ORIGINAL HOLE		10/29/1997		7,220.0		7,230.0			
Other In Hole									
Run Date		Des		Make		OD (in)		Top (ftKB)	
12/5/2025		Cast Iron Bridge Plug w/ 2 SX Cement				4		6,824.0	
12/8/2025		Cement Retainer				4		4,080.0	
Logs									
Date		Type		Depth Top (MD) (ftKB)		Btm (ftKB)			
12/20/1992		INDUCTION		290		7,360.0			
12/28/1992		CEMENT BOND		4,130		7,198.0			
Wellbore Plug Back Total Depths									
Date		Type		Com		PBTD (ftKB)			
11/25/1993		FILL		CLEAN OUT		7,305			
11/1/1997		FILL		CLEAN OUT		7,276			