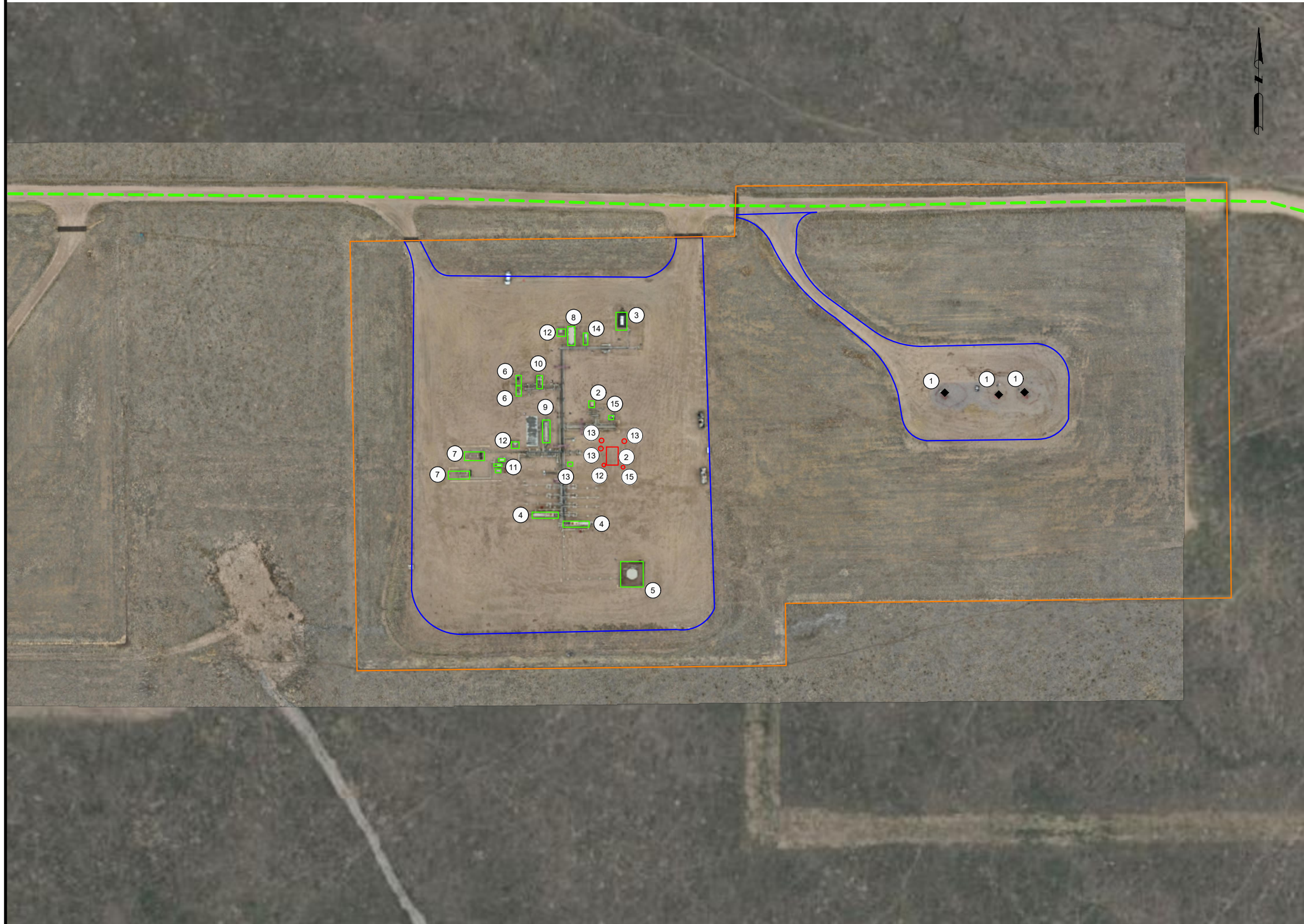
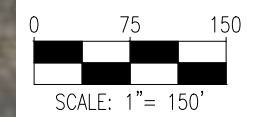


BB05-28 MULTI FACILITY DRAWING



ITEM	DESCRIPTION	QUANTITY
1	WELLS	3
2	GAS COMPRESSORS	2
3	ELECTRIC GENERATORS	1
4	SEPARATORS	2
5	MAINTENANCE TANK	1
6	ENCLOSED COMBUSTOR	2
7	PIGGING STATION	2
8	INSTRUMENT AIR BUILDING	1
9	SURGE VESSEL	1
10	KNOCKOUT VESSEL	1
11	SALES GAS METER BUILDING	3
12	DRAIN VAULTS	3
13	SCRUBBERS	4
14	TRANSFORMERS	1
15	CHEMICAL INJECTION TOTES/SKIDS	2



DISCLAIMER:
THIS PLOT DOES NOT REPRESENT A MONUMENTED LAND SURVEY AND SHOULD NOT BE RELIED UPON TO DETERMINE BOUNDARY LINES, PROPERTY OWNERSHIP OR OTHER PROPERTY INTERESTS. PARCEL LINES, IF DEPICTED HAVE NOT BEEN FIELD VERIFIED AND MAY BE BASED UPON PUBLICLY AVAILABLE DATA THAT ALSO HAS NOT BEEN INDEPENDENTLY VERIFIED.

8620 Wolff Court
Westminster, CO 80031
(303) 928-7128
www.ascentgeomatics.com

FIELD DATE: N/A
DRAWN BY: LM

DRAWING DATE: 06-04-26
CHECKED BY: JG

SITE NAME: BB05-28 MULTI
SURFACE LOCATION: NE 1/4 NW 1/4 SEC. 5, T5N, R63W, 6TH P.M. WELD COUNTY, COLORADO

DATA SOURCE: AERIAL IMAGERY: CVX
PUBLICLY AVAILABLE DATA SOURCES HAVE NOT BEEN INDEPENDENTLY VERIFIED BY ASCENT.

LEGEND:
◆ = EXISTING WELL

--- = EXISTING ACCESS ROAD

- = WORKING PAD SURFACE
- = OIL AND GAS LOCATION
- = PROPOSED FACILITY
- = EXISTING FACILITY

