

Project: Rio Blanco County, CO (central)  
 Site: RGU 23-6-297 Pad  
 Well: RGU 41-7-297  
 Wellbore: OH  
 Design: Design #2  
 Latitude: 39.904679  
 Longitude: -108.325362  
 Ground Level: 6225.0  
 RKB=30' @ 6255.0usft (H&P #522)



REFERENCE INFORMATION
Co-ordinate (N/E) Reference: Well RGU 41-7-297 - Slot RGU 41-7-297, True North
Vertical (TVD) Reference: RKB=30' @ 6255.0usft (H&P #522)
Section (VS) Reference: Slot - RGU 41-7-297(0.0N, 0.0E)
Measured Depth Reference: RKB=30' @ 6255.0usft (H&P #522)
Calculation Method: Minimum Curvature

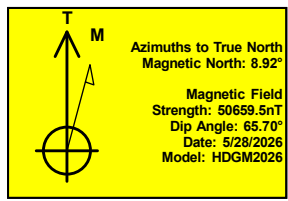
ANNOTATIONS									
MD	Inc	Azi	TVD	+N/-S	+E/-W	VSec	Departure	Annotation	
119.0	1.13	220.15	119.0	-0.7	-0.6	-0.4	0.0	Conductor Tie in	
500.0	1.13	220.15	499.9	-6.5	-5.4	-4.1	7.5	Build 3° / 100'	
1110.8	17.74	100.32	1101.3	-27.9	83.0	86.7	100.1	EOB @ 17.74° Inc. / 100.32° Azm	
7946.7	17.74	100.32	7612.3	-401.1	2131.7	2169.1	2182.6	Drop 2° / 100'	
8833.5	0.00	0.00	8485.0	-425.5	2265.6	2305.3	2318.7	EOD @ Vertical	
13363.5	0.00	0.00	13015.0	-425.5	2265.6	2305.3	2318.7	TD @ 13363.5' MD / 13015.0' TVD	

PROJECT DETAILS: Rio Blanco County, CO (central)  
 Geodetic System: US State Plane 1983  
 Datum: North American Datum 1983  
 Ellipsoid: GRS 1980  
 Zone: Colorado Central Zone  
 System Datum: Mean Sea Level

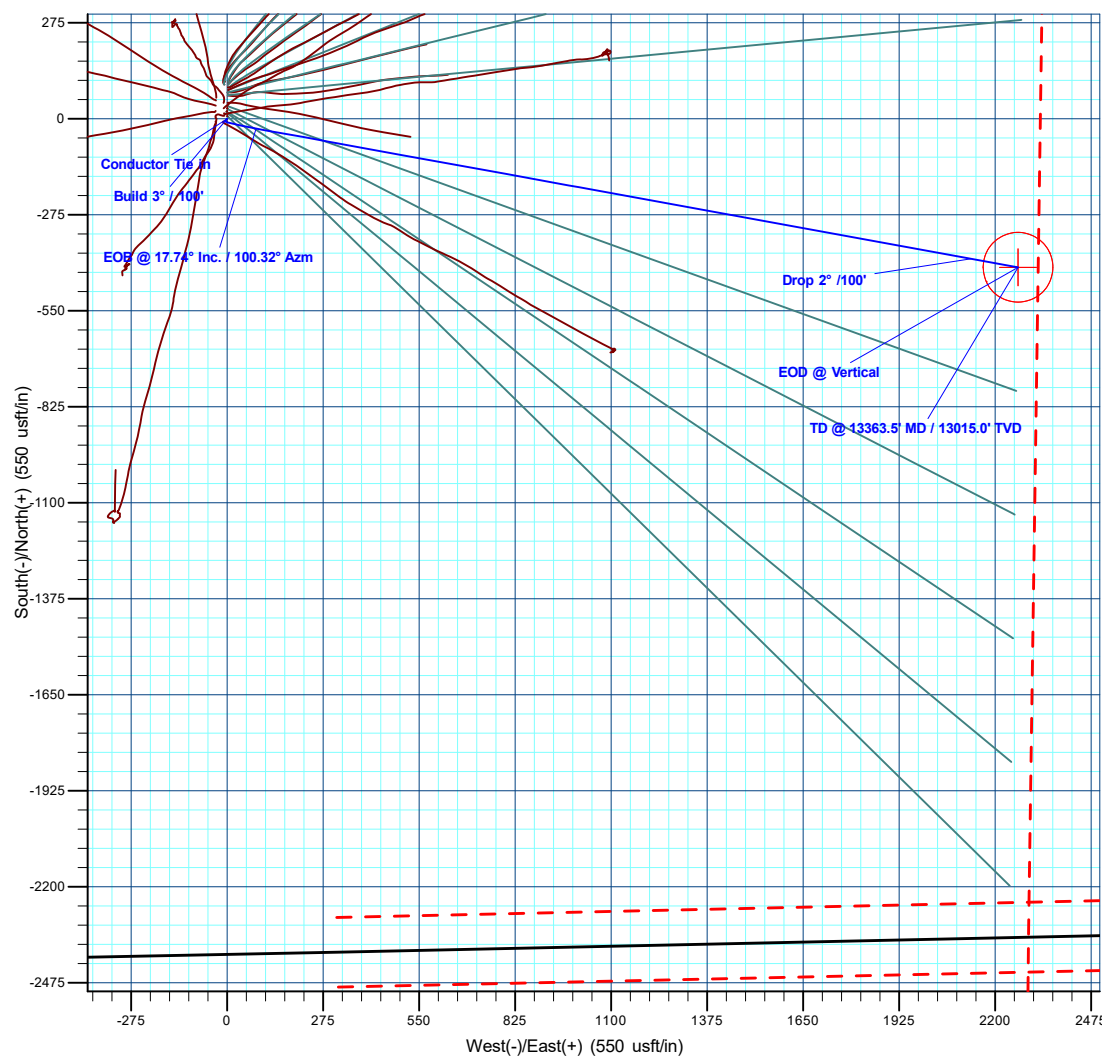
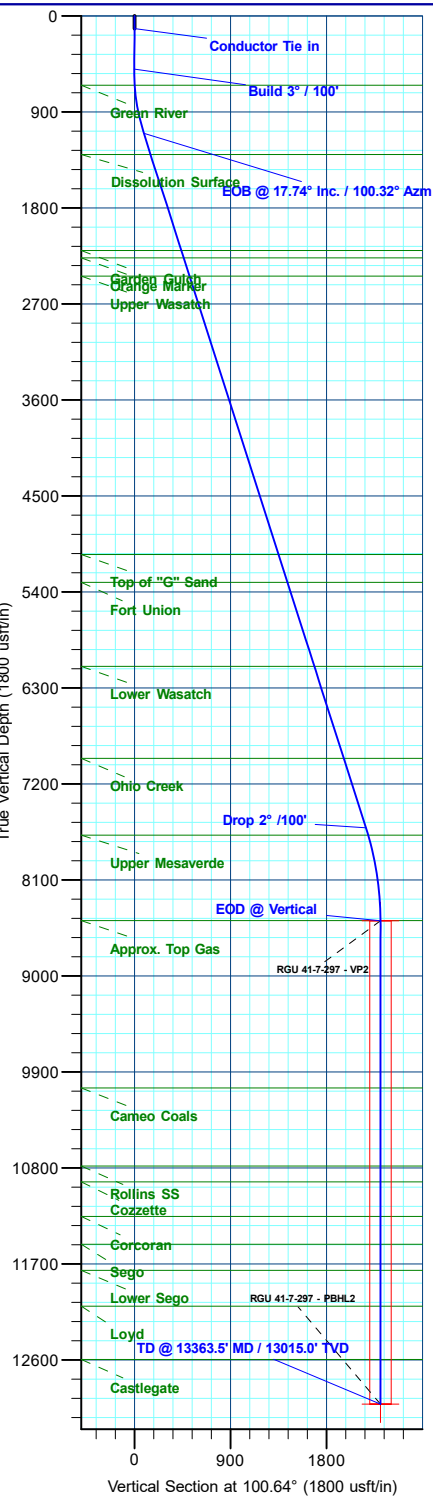
WELLBORE TARGET DETAILS (MAP CO-ORDINATES AND LAT/LONG)							
Name	TVD	+N/-S	+E/-W	Northing	Easting	Latitude	Longitude
RGU 41-7-297 - VP2	8485.0	-425.5	2265.6	1766243.70	2209690.52	39.903510	-108.317286
RGU 41-7-297 - PBHL2	13015.0	-425.5	2265.6	1766243.70	2209690.52	39.903510	-108.317286

WELL DETAILS: RGU 41-7-297						
+N/-S	+E/-W	Northing	Ground Elev.	Slot	Easting	Latitude
0.0	0.0	1766739.45	6225.0	RGU 41-7-297	2207439.20	39.904679
						-108.325362

FORMATION TOP DETAILS		
TVDPath	MDPath	Formation
650.0	650.2	Green River
1300.0	1319.4	Dissolution Surface
2200.0	2264.3	Garden Gulch
2268.0	2335.7	Orange Gulch
2440.0	2516.3	Upper Wasatch
5050.0	5256.6	Top of "G" Sand
5310.0	5529.5	Fort Union
6100.0	6359.0	Lower Wasatch
6962.0	7264.0	Ohio Creek
7682.0	8019.6	Upper Mesaverde
8482.0	8830.5	Approx. Top Gas
10052.0	10400.5	Cameo Coals
10782.0	11130.5	Rollins SS
10932.0	11280.5	Cozzette
11257.0	11605.5	Corcoran
11517.0	11865.5	Sego
11762.0	12110.5	Lower Sego
12097.0	12445.5	Loyd
12597.0	12945.5	Castlegate



CASING DETAILS  
 No casing data is available



Plan: Design #2 (RGU 41-7-297/OH)  
 Created By: Will Jircik Date: 16:59, May 27 2026



# **Flywheel Energy**

**Rio Blanco County, CO (central)  
RGU 23-6-297 Pad  
RGU 41-7-297 - Slot RGU 41-7-297**

**OH**

**Plan: Design #2**

## **KLX Well Planning Report**

**27 May, 2026**



<b>Database:</b>	KLXDirectional-AD	<b>Local Co-ordinate Reference:</b>	Well RGU 41-7-297 - Slot RGU 41-7-297
<b>Company:</b>	Flywheel Energy	<b>TVD Reference:</b>	RKB=30' @ 6255.0usft (H&P #522)
<b>Project:</b>	Rio Blanco County, CO (central)	<b>MD Reference:</b>	RKB=30' @ 6255.0usft (H&P #522)
<b>Site:</b>	RGU 23-6-297 Pad	<b>North Reference:</b>	True
<b>Well:</b>	RGU 41-7-297	<b>Survey Calculation Method:</b>	Minimum Curvature
<b>Wellbore:</b>	OH		
<b>Design:</b>	Design #2		

<b>Project</b>	Rio Blanco County, CO (central)		
<b>Map System:</b>	US State Plane 1983	<b>System Datum:</b>	Mean Sea Level
<b>Geo Datum:</b>	North American Datum 1983		
<b>Map Zone:</b>	Colorado Central Zone		

<b>Site</b>	RGU 23-6-297 Pad				
<b>Site Position:</b>		<b>Northing:</b>	1,766,844.82 usft	<b>Latitude:</b>	39.904967
<b>From:</b>	Map	<b>Easting:</b>	2,207,435.21 usft	<b>Longitude:</b>	-108.325388
<b>Position Uncertainty:</b>	0.0 usft	<b>Slot Radius:</b>	13-3/16 "	<b>Grid Convergence:</b>	-1.78 °

<b>Well</b>	RGU 41-7-297 - Slot RGU 41-7-297					
<b>Well Position</b>	<b>+N/-S</b>	-105.2 usft	<b>Northing:</b>	1,766,739.45 usft	<b>Latitude:</b>	39.904679
	<b>+E/-W</b>	7.3 usft	<b>Easting:</b>	2,207,439.20 usft	<b>Longitude:</b>	-108.325362
<b>Position Uncertainty</b>		0.0 usft	<b>Wellhead Elevation:</b>		<b>Ground Level:</b>	6,225.0 usft

<b>Wellbore</b>	OH
-----------------	----

Magnetics	Model Name	Sample Date	Declination (°)	Dip Angle (°)	Field Strength (nT)
	HDGM2026	5/28/2026	8.92	65.70	50,659.50000000

<b>Design</b>	Design #2
---------------	-----------

<b>Audit Notes:</b>									
<b>Version:</b>	<b>Phase:</b> PLAN <b>Tie On Depth:</b> 119.0								
<b>Vertical Section:</b>	<table border="1"> <thead> <tr> <th>Depth From (TVD) (usft)</th> <th>+N/-S (usft)</th> <th>+E/-W (usft)</th> <th>Direction (°)</th> </tr> </thead> <tbody> <tr> <td>0.0</td> <td>0.0</td> <td>0.0</td> <td>100.64</td> </tr> </tbody> </table>	Depth From (TVD) (usft)	+N/-S (usft)	+E/-W (usft)	Direction (°)	0.0	0.0	0.0	100.64
Depth From (TVD) (usft)	+N/-S (usft)	+E/-W (usft)	Direction (°)						
0.0	0.0	0.0	100.64						

Plan Sections										
Measured Depth (usft)	Inclination (°)	Azimuth (°)	Vertical Depth (usft)	+N/-S (usft)	+E/-W (usft)	Dogleg Rate (°/100usft)	Build Rate (°/100usft)	Turn Rate (°/100usft)	TFO (°)	Target
119.0	1.13	220.15	119.0	-0.7	-0.6	0.00	0.00	0.00	0.00	
500.0	1.13	220.15	499.9	-6.5	-5.4	0.00	0.00	0.00	0.00	
1,110.8	17.74	100.32	1,101.3	-27.9	83.0	3.00	2.72	-19.62	-122.79	
7,946.7	17.74	100.32	7,612.3	-401.1	2,131.7	0.00	0.00	0.00	0.00	
8,833.5	0.00	0.00	8,485.0	-425.5	2,265.6	2.00	-2.00	0.00	180.00	RGU 41-7-297 - VP
13,363.5	0.00	0.00	13,015.0	-425.5	2,265.6	0.00	0.00	0.00	0.00	RGU 41-7-297 - PB

<b>Database:</b>	KLXDirectional-AD	<b>Local Co-ordinate Reference:</b>	Well RGU 41-7-297 - Slot RGU 41-7-297
<b>Company:</b>	Flywheel Energy	<b>TVD Reference:</b>	RKB=30' @ 6255.0usft (H&P #522)
<b>Project:</b>	Rio Blanco County, CO (central)	<b>MD Reference:</b>	RKB=30' @ 6255.0usft (H&P #522)
<b>Site:</b>	RGU 23-6-297 Pad	<b>North Reference:</b>	True
<b>Well:</b>	RGU 41-7-297	<b>Survey Calculation Method:</b>	Minimum Curvature
<b>Wellbore:</b>	OH		
<b>Design:</b>	Design #2		

Planned Survey										
Measured Depth (usft)	Inclination (°)	Azimuth (°)	Vertical Depth (usft)	+N/-S (usft)	+E/-W (usft)	Vertical Section (usft)	Dogleg Rate (°/100usft)	Build Rate (°/100usft)	Turn Rate (°/100usft)	
0.0	0.00	0.00	0.0	0.0	0.0	0.0	0.00	0.00	0.00	
30.0	0.00	0.00	30.0	0.0	0.0	0.0	0.00	0.00	0.00	
55.0	0.69	214.00	55.0	-0.1	-0.1	-0.1	2.76	2.76	0.00	
80.0	0.54	223.87	80.0	-0.3	-0.2	-0.2	0.73	-0.60	39.48	
105.0	0.77	213.44	105.0	-0.6	-0.4	-0.3	1.03	0.92	-41.72	
<b>Conductor Tie in</b>										
119.0	1.13	220.15	119.0	-0.7	-0.6	-0.4	2.69	2.57	47.93	
200.0	1.13	220.15	200.0	-2.0	-1.6	-1.2	0.00	0.00	0.00	
300.0	1.13	220.15	300.0	-3.5	-2.9	-2.2	0.00	0.00	0.00	
400.0	1.13	220.15	399.9	-5.0	-4.1	-3.1	0.00	0.00	0.00	
<b>Build 3° / 100'</b>										
500.0	1.13	220.15	499.9	-6.5	-5.4	-4.1	0.00	0.00	0.00	
600.0	2.57	119.03	599.9	-8.3	-4.1	-2.5	3.00	1.44	-101.12	
<b>Green River</b>										
650.2	4.01	111.04	650.0	-9.5	-1.5	0.3	3.00	2.86	-15.92	
700.0	5.47	107.32	699.6	-10.8	2.4	4.4	3.00	2.94	-7.47	
800.0	8.44	103.77	798.9	-14.0	14.1	16.5	3.00	2.97	-3.55	
900.0	11.43	102.06	897.4	-17.8	30.9	33.7	3.00	2.99	-1.71	
1,000.0	14.42	101.05	994.8	-22.3	52.8	56.0	3.00	2.99	-1.01	
1,100.0	17.41	100.38	1,091.0	-27.4	79.8	83.5	3.00	2.99	-0.67	
<b>EOB @ 17.74° Inc. / 100.32° Azm</b>										
1,110.8	17.74	100.32	1,101.3	-27.9	83.0	86.7	3.00	3.00	-0.55	
1,200.0	17.74	100.32	1,186.2	-32.8	109.7	113.9	0.00	0.00	0.00	
1,300.0	17.74	100.32	1,281.5	-38.3	139.7	144.4	0.00	0.00	0.00	
<b>Dissolution Surface</b>										
1,319.4	17.74	100.32	1,300.0	-39.3	145.5	150.3	0.00	0.00	0.00	
1,400.0	17.74	100.32	1,376.7	-43.7	169.7	174.8	0.00	0.00	0.00	
1,500.0	17.74	100.32	1,472.0	-49.2	199.6	205.3	0.00	0.00	0.00	
1,600.0	17.74	100.32	1,567.2	-54.6	229.6	235.7	0.00	0.00	0.00	
1,700.0	17.74	100.32	1,662.5	-60.1	259.6	266.2	0.00	0.00	0.00	
1,800.0	17.74	100.32	1,757.7	-65.6	289.5	296.7	0.00	0.00	0.00	
1,900.0	17.74	100.32	1,853.0	-71.0	319.5	327.1	0.00	0.00	0.00	
2,000.0	17.74	100.32	1,948.2	-76.5	349.5	357.6	0.00	0.00	0.00	
2,100.0	17.74	100.32	2,043.5	-81.9	379.5	388.1	0.00	0.00	0.00	
2,200.0	17.74	100.32	2,138.7	-87.4	409.4	418.5	0.00	0.00	0.00	
<b>Garden Gulch</b>										
2,264.3	17.74	100.32	2,200.0	-90.9	428.7	438.1	0.00	0.00	0.00	
2,300.0	17.74	100.32	2,234.0	-92.9	439.4	449.0	0.00	0.00	0.00	
<b>Orange Marker</b>										
2,335.7	17.74	100.32	2,268.0	-94.8	450.1	459.9	0.00	0.00	0.00	
2,400.0	17.74	100.32	2,329.2	-98.3	469.4	479.4	0.00	0.00	0.00	
2,500.0	17.74	100.32	2,424.5	-103.8	499.3	509.9	0.00	0.00	0.00	
<b>Upper Wasatch</b>										
2,516.3	17.74	100.32	2,440.0	-104.7	504.2	514.9	0.00	0.00	0.00	
2,600.0	17.74	100.32	2,519.7	-109.2	529.3	540.4	0.00	0.00	0.00	
2,700.0	17.74	100.32	2,614.9	-114.7	559.3	570.8	0.00	0.00	0.00	
2,800.0	17.74	100.32	2,710.2	-120.2	589.2	601.3	0.00	0.00	0.00	
2,900.0	17.74	100.32	2,805.4	-125.6	619.2	631.8	0.00	0.00	0.00	
3,000.0	17.74	100.32	2,900.7	-131.1	649.2	662.2	0.00	0.00	0.00	
3,100.0	17.74	100.32	2,995.9	-136.5	679.1	692.7	0.00	0.00	0.00	
3,200.0	17.74	100.32	3,091.2	-142.0	709.1	723.1	0.00	0.00	0.00	
3,300.0	17.74	100.32	3,186.4	-147.4	739.1	753.6	0.00	0.00	0.00	
3,400.0	17.74	100.32	3,281.7	-152.9	769.1	784.1	0.00	0.00	0.00	

<b>Database:</b>	KLXDirectional-AD	<b>Local Co-ordinate Reference:</b>	Well RGU 41-7-297 - Slot RGU 41-7-297
<b>Company:</b>	Flywheel Energy	<b>TVD Reference:</b>	RKB=30' @ 6255.0usft (H&P #522)
<b>Project:</b>	Rio Blanco County, CO (central)	<b>MD Reference:</b>	RKB=30' @ 6255.0usft (H&P #522)
<b>Site:</b>	RGU 23-6-297 Pad	<b>North Reference:</b>	True
<b>Well:</b>	RGU 41-7-297	<b>Survey Calculation Method:</b>	Minimum Curvature
<b>Wellbore:</b>	OH		
<b>Design:</b>	Design #2		

Planned Survey									
Measured Depth (usft)	Inclination (°)	Azimuth (°)	Vertical Depth (usft)	+N/-S (usft)	+E/-W (usft)	Vertical Section (usft)	Dogleg Rate (°/100usft)	Build Rate (°/100usft)	Turn Rate (°/100usft)
3,500.0	17.74	100.32	3,376.9	-158.4	799.0	814.5	0.00	0.00	0.00
3,600.0	17.74	100.32	3,472.2	-163.8	829.0	845.0	0.00	0.00	0.00
3,700.0	17.74	100.32	3,567.4	-169.3	859.0	875.5	0.00	0.00	0.00
3,800.0	17.74	100.32	3,662.7	-174.7	888.9	905.9	0.00	0.00	0.00
3,900.0	17.74	100.32	3,757.9	-180.2	918.9	936.4	0.00	0.00	0.00
4,000.0	17.74	100.32	3,853.2	-185.7	948.9	966.8	0.00	0.00	0.00
4,100.0	17.74	100.32	3,948.4	-191.1	978.8	997.3	0.00	0.00	0.00
4,200.0	17.74	100.32	4,043.7	-196.6	1,008.8	1,027.8	0.00	0.00	0.00
4,300.0	17.74	100.32	4,138.9	-202.0	1,038.8	1,058.2	0.00	0.00	0.00
4,400.0	17.74	100.32	4,234.1	-207.5	1,068.8	1,088.7	0.00	0.00	0.00
4,500.0	17.74	100.32	4,329.4	-213.0	1,098.7	1,119.2	0.00	0.00	0.00
4,600.0	17.74	100.32	4,424.6	-218.4	1,128.7	1,149.6	0.00	0.00	0.00
4,700.0	17.74	100.32	4,519.9	-223.9	1,158.7	1,180.1	0.00	0.00	0.00
4,800.0	17.74	100.32	4,615.1	-229.3	1,188.6	1,210.5	0.00	0.00	0.00
4,900.0	17.74	100.32	4,710.4	-234.8	1,218.6	1,241.0	0.00	0.00	0.00
5,000.0	17.74	100.32	4,805.6	-240.2	1,248.6	1,271.5	0.00	0.00	0.00
5,100.0	17.74	100.32	4,900.9	-245.7	1,278.5	1,301.9	0.00	0.00	0.00
5,200.0	17.74	100.32	4,996.1	-251.2	1,308.5	1,332.4	0.00	0.00	0.00
<b>Top of "G" Sand</b>									
5,256.6	17.74	100.32	5,050.0	-254.3	1,325.5	1,349.6	0.00	0.00	0.00
5,300.0	17.74	100.32	5,091.4	-256.6	1,338.5	1,362.8	0.00	0.00	0.00
5,400.0	17.74	100.32	5,186.6	-262.1	1,368.4	1,393.3	0.00	0.00	0.00
5,500.0	17.74	100.32	5,281.9	-267.5	1,398.4	1,423.8	0.00	0.00	0.00
<b>Fort Union</b>									
5,529.5	17.74	100.32	5,310.0	-269.2	1,407.3	1,432.8	0.00	0.00	0.00
5,600.0	17.74	100.32	5,377.1	-273.0	1,428.4	1,454.2	0.00	0.00	0.00
5,700.0	17.74	100.32	5,472.4	-278.5	1,458.4	1,484.7	0.00	0.00	0.00
5,800.0	17.74	100.32	5,567.6	-283.9	1,488.3	1,515.2	0.00	0.00	0.00
5,900.0	17.74	100.32	5,662.9	-289.4	1,518.3	1,545.6	0.00	0.00	0.00
6,000.0	17.74	100.32	5,758.1	-294.8	1,548.3	1,576.1	0.00	0.00	0.00
6,100.0	17.74	100.32	5,853.4	-300.3	1,578.2	1,606.5	0.00	0.00	0.00
6,200.0	17.74	100.32	5,948.6	-305.8	1,608.2	1,637.0	0.00	0.00	0.00
6,300.0	17.74	100.32	6,043.8	-311.2	1,638.2	1,667.5	0.00	0.00	0.00
<b>Lower Wasatch</b>									
6,359.0	17.74	100.32	6,100.0	-314.4	1,655.8	1,685.4	0.00	0.00	0.00
6,400.0	17.74	100.32	6,139.1	-316.7	1,668.1	1,697.9	0.00	0.00	0.00
6,500.0	17.74	100.32	6,234.3	-322.1	1,698.1	1,728.4	0.00	0.00	0.00
6,600.0	17.74	100.32	6,329.6	-327.6	1,728.1	1,758.9	0.00	0.00	0.00
6,700.0	17.74	100.32	6,424.8	-333.0	1,758.1	1,789.3	0.00	0.00	0.00
6,800.0	17.74	100.32	6,520.1	-338.5	1,788.0	1,819.8	0.00	0.00	0.00
6,900.0	17.74	100.32	6,615.3	-344.0	1,818.0	1,850.2	0.00	0.00	0.00
7,000.0	17.74	100.32	6,710.6	-349.4	1,848.0	1,880.7	0.00	0.00	0.00
7,100.0	17.74	100.32	6,805.8	-354.9	1,877.9	1,911.2	0.00	0.00	0.00
7,200.0	17.74	100.32	6,901.1	-360.3	1,907.9	1,941.6	0.00	0.00	0.00
<b>Ohio Creek</b>									
7,264.0	17.74	100.32	6,962.0	-363.8	1,927.1	1,961.1	0.00	0.00	0.00
7,300.0	17.74	100.32	6,996.3	-365.8	1,937.9	1,972.1	0.00	0.00	0.00
7,400.0	17.74	100.32	7,091.6	-371.3	1,967.8	2,002.6	0.00	0.00	0.00
7,500.0	17.74	100.32	7,186.8	-376.7	1,997.8	2,033.0	0.00	0.00	0.00
7,600.0	17.74	100.32	7,282.1	-382.2	2,027.8	2,063.5	0.00	0.00	0.00
7,700.0	17.74	100.32	7,377.3	-387.6	2,057.7	2,093.9	0.00	0.00	0.00
7,800.0	17.74	100.32	7,472.6	-393.1	2,087.7	2,124.4	0.00	0.00	0.00
7,900.0	17.74	100.32	7,567.8	-398.6	2,117.7	2,154.9	0.00	0.00	0.00
<b>Drop 2° /100'</b>									

<b>Database:</b>	KLXDirectional-AD	<b>Local Co-ordinate Reference:</b>	Well RGU 41-7-297 - Slot RGU 41-7-297
<b>Company:</b>	Flywheel Energy	<b>TVD Reference:</b>	RKB=30' @ 6255.0usft (H&P #522)
<b>Project:</b>	Rio Blanco County, CO (central)	<b>MD Reference:</b>	RKB=30' @ 6255.0usft (H&P #522)
<b>Site:</b>	RGU 23-6-297 Pad	<b>North Reference:</b>	True
<b>Well:</b>	RGU 41-7-297	<b>Survey Calculation Method:</b>	Minimum Curvature
<b>Wellbore:</b>	OH		
<b>Design:</b>	Design #2		

Planned Survey									
Measured Depth (usft)	Inclination (°)	Azimuth (°)	Vertical Depth (usft)	+N/-S (usft)	+E/-W (usft)	Vertical Section (usft)	Dogleg Rate (°/100usft)	Build Rate (°/100usft)	Turn Rate (°/100usft)
7,946.7	17.74	100.32	7,612.3	-401.1	2,131.7	2,169.1	0.00	0.00	0.00
8,000.0	16.67	100.32	7,663.2	-403.9	2,147.2	2,184.9	2.00	-2.00	0.00
<b>Upper Mesaverde</b>									
8,019.6	16.28	100.32	7,682.0	-404.9	2,152.7	2,190.4	2.00	-2.00	0.00
8,100.0	14.67	100.32	7,759.5	-408.8	2,173.8	2,211.9	2.00	-2.00	0.00
8,200.0	12.67	100.32	7,856.6	-413.0	2,197.0	2,235.5	2.00	-2.00	0.00
8,300.0	10.67	100.32	7,954.6	-416.6	2,216.9	2,255.7	2.00	-2.00	0.00
8,400.0	8.67	100.32	8,053.1	-419.6	2,233.4	2,272.5	2.00	-2.00	0.00
8,500.0	6.67	100.32	8,152.2	-422.0	2,246.6	2,285.9	2.00	-2.00	0.00
8,600.0	4.67	100.32	8,251.7	-423.8	2,256.3	2,295.7	2.00	-2.00	0.00
8,700.0	2.67	100.32	8,351.5	-424.9	2,262.6	2,302.1	2.00	-2.00	0.00
8,800.0	0.67	100.32	8,451.5	-425.5	2,265.5	2,305.1	2.00	-2.00	0.00
<b>Approx. Top Gas</b>									
8,830.5	0.06	100.32	8,482.0	-425.5	2,265.6	2,305.3	2.00	-2.00	0.00
<b>EOD @ Vertical</b>									
8,833.5	0.00	0.00	8,485.0	-425.5	2,265.6	2,305.3	2.00	-2.00	0.00
8,900.0	0.00	0.00	8,551.5	-425.5	2,265.6	2,305.3	0.00	0.00	0.00
9,000.0	0.00	0.00	8,651.5	-425.5	2,265.6	2,305.3	0.00	0.00	0.00
9,100.0	0.00	0.00	8,751.5	-425.5	2,265.6	2,305.3	0.00	0.00	0.00
9,200.0	0.00	0.00	8,851.5	-425.5	2,265.6	2,305.3	0.00	0.00	0.00
9,300.0	0.00	0.00	8,951.5	-425.5	2,265.6	2,305.3	0.00	0.00	0.00
9,400.0	0.00	0.00	9,051.5	-425.5	2,265.6	2,305.3	0.00	0.00	0.00
9,500.0	0.00	0.00	9,151.5	-425.5	2,265.6	2,305.3	0.00	0.00	0.00
9,600.0	0.00	0.00	9,251.5	-425.5	2,265.6	2,305.3	0.00	0.00	0.00
9,700.0	0.00	0.00	9,351.5	-425.5	2,265.6	2,305.3	0.00	0.00	0.00
9,800.0	0.00	0.00	9,451.5	-425.5	2,265.6	2,305.3	0.00	0.00	0.00
9,900.0	0.00	0.00	9,551.5	-425.5	2,265.6	2,305.3	0.00	0.00	0.00
10,000.0	0.00	0.00	9,651.5	-425.5	2,265.6	2,305.3	0.00	0.00	0.00
10,100.0	0.00	0.00	9,751.5	-425.5	2,265.6	2,305.3	0.00	0.00	0.00
10,200.0	0.00	0.00	9,851.5	-425.5	2,265.6	2,305.3	0.00	0.00	0.00
10,300.0	0.00	0.00	9,951.5	-425.5	2,265.6	2,305.3	0.00	0.00	0.00
10,400.0	0.00	0.00	10,051.5	-425.5	2,265.6	2,305.3	0.00	0.00	0.00
<b>Cameo Coals</b>									
10,400.5	0.00	0.00	10,052.0	-425.5	2,265.6	2,305.3	0.00	0.00	0.00
10,500.0	0.00	0.00	10,151.5	-425.5	2,265.6	2,305.3	0.00	0.00	0.00
10,600.0	0.00	0.00	10,251.5	-425.5	2,265.6	2,305.3	0.00	0.00	0.00
10,700.0	0.00	0.00	10,351.5	-425.5	2,265.6	2,305.3	0.00	0.00	0.00
10,800.0	0.00	0.00	10,451.5	-425.5	2,265.6	2,305.3	0.00	0.00	0.00
10,900.0	0.00	0.00	10,551.5	-425.5	2,265.6	2,305.3	0.00	0.00	0.00
11,000.0	0.00	0.00	10,651.5	-425.5	2,265.6	2,305.3	0.00	0.00	0.00
11,100.0	0.00	0.00	10,751.5	-425.5	2,265.6	2,305.3	0.00	0.00	0.00
<b>Rollins SS</b>									
11,130.5	0.00	0.00	10,782.0	-425.5	2,265.6	2,305.3	0.00	0.00	0.00
11,200.0	0.00	0.00	10,851.5	-425.5	2,265.6	2,305.3	0.00	0.00	0.00
<b>Cozzette</b>									
11,280.5	0.00	0.00	10,932.0	-425.5	2,265.6	2,305.3	0.00	0.00	0.00
11,300.0	0.00	0.00	10,951.5	-425.5	2,265.6	2,305.3	0.00	0.00	0.00
11,400.0	0.00	0.00	11,051.5	-425.5	2,265.6	2,305.3	0.00	0.00	0.00
11,500.0	0.00	0.00	11,151.5	-425.5	2,265.6	2,305.3	0.00	0.00	0.00
11,600.0	0.00	0.00	11,251.5	-425.5	2,265.6	2,305.3	0.00	0.00	0.00
<b>Corcoran</b>									
11,605.5	0.00	0.00	11,257.0	-425.5	2,265.6	2,305.3	0.00	0.00	0.00
11,700.0	0.00	0.00	11,351.5	-425.5	2,265.6	2,305.3	0.00	0.00	0.00

<b>Database:</b>	KLXDirectional-AD	<b>Local Co-ordinate Reference:</b>	Well RGU 41-7-297 - Slot RGU 41-7-297
<b>Company:</b>	Flywheel Energy	<b>TVD Reference:</b>	RKB=30' @ 6255.0usft (H&P #522)
<b>Project:</b>	Rio Blanco County, CO (central)	<b>MD Reference:</b>	RKB=30' @ 6255.0usft (H&P #522)
<b>Site:</b>	RGU 23-6-297 Pad	<b>North Reference:</b>	True
<b>Well:</b>	RGU 41-7-297	<b>Survey Calculation Method:</b>	Minimum Curvature
<b>Wellbore:</b>	OH		
<b>Design:</b>	Design #2		

Planned Survey										
Measured Depth (usft)	Inclination (°)	Azimuth (°)	Vertical Depth (usft)	+N/-S (usft)	+E/-W (usft)	Vertical Section (usft)	Dogleg Rate (°/100usft)	Build Rate (°/100usft)	Turn Rate (°/100usft)	
11,800.0	0.00	0.00	11,451.5	-425.5	2,265.6	2,305.3	0.00	0.00	0.00	
<b>Sego</b>										
11,865.5	0.00	0.00	11,517.0	-425.5	2,265.6	2,305.3	0.00	0.00	0.00	
11,900.0	0.00	0.00	11,551.5	-425.5	2,265.6	2,305.3	0.00	0.00	0.00	
12,000.0	0.00	0.00	11,651.5	-425.5	2,265.6	2,305.3	0.00	0.00	0.00	
12,100.0	0.00	0.00	11,751.5	-425.5	2,265.6	2,305.3	0.00	0.00	0.00	
<b>Lower Sego</b>										
12,110.5	0.00	0.00	11,762.0	-425.5	2,265.6	2,305.3	0.00	0.00	0.00	
12,200.0	0.00	0.00	11,851.5	-425.5	2,265.6	2,305.3	0.00	0.00	0.00	
12,300.0	0.00	0.00	11,951.5	-425.5	2,265.6	2,305.3	0.00	0.00	0.00	
12,400.0	0.00	0.00	12,051.5	-425.5	2,265.6	2,305.3	0.00	0.00	0.00	
<b>Loyd</b>										
12,445.5	0.00	0.00	12,097.0	-425.5	2,265.6	2,305.3	0.00	0.00	0.00	
12,500.0	0.00	0.00	12,151.5	-425.5	2,265.6	2,305.3	0.00	0.00	0.00	
12,600.0	0.00	0.00	12,251.5	-425.5	2,265.6	2,305.3	0.00	0.00	0.00	
12,700.0	0.00	0.00	12,351.5	-425.5	2,265.6	2,305.3	0.00	0.00	0.00	
12,800.0	0.00	0.00	12,451.5	-425.5	2,265.6	2,305.3	0.00	0.00	0.00	
12,900.0	0.00	0.00	12,551.5	-425.5	2,265.6	2,305.3	0.00	0.00	0.00	
<b>Castlegate</b>										
12,945.5	0.00	0.00	12,597.0	-425.5	2,265.6	2,305.3	0.00	0.00	0.00	
13,000.0	0.00	0.00	12,651.5	-425.5	2,265.6	2,305.3	0.00	0.00	0.00	
13,100.0	0.00	0.00	12,751.5	-425.5	2,265.6	2,305.3	0.00	0.00	0.00	
13,200.0	0.00	0.00	12,851.5	-425.5	2,265.6	2,305.3	0.00	0.00	0.00	
13,300.0	0.00	0.00	12,951.5	-425.5	2,265.6	2,305.3	0.00	0.00	0.00	
<b>TD @ 13363.5' MD / 13015.0' TVD</b>										
13,363.5	0.00	0.00	13,015.0	-425.5	2,265.6	2,305.3	0.00	0.00	0.00	

Design Targets										
Target Name	Dip Angle (°)	Dip Dir. (°)	TVD (usft)	+N/-S (usft)	+E/-W (usft)	Northing (usft)	Easting (usft)	Latitude	Longitude	
RGU 41-7-297 - VP2 - hit/miss target - plan hits target center - Shape - Point	0.00	0.00	8,485.0	-425.5	2,265.6	1,766,243.70	2,209,690.52	39.903510	-108.317287	
RGU 41-7-297 - PBHI - plan hits target center - Point	0.00	0.00	13,015.0	-425.5	2,265.6	1,766,243.70	2,209,690.52	39.903510	-108.317287	

<b>Database:</b>	KLXDirectional-AD	<b>Local Co-ordinate Reference:</b>	Well RGU 41-7-297 - Slot RGU 41-7-297
<b>Company:</b>	Flywheel Energy	<b>TVD Reference:</b>	RKB=30' @ 6255.0usft (H&P #522)
<b>Project:</b>	Rio Blanco County, CO (central)	<b>MD Reference:</b>	RKB=30' @ 6255.0usft (H&P #522)
<b>Site:</b>	RGU 23-6-297 Pad	<b>North Reference:</b>	True
<b>Well:</b>	RGU 41-7-297	<b>Survey Calculation Method:</b>	Minimum Curvature
<b>Wellbore:</b>	OH		
<b>Design:</b>	Design #2		

Formations						
Measured Depth (usft)	Vertical Depth (usft)	Name	Lithology	Dip (°)	Dip Direction (°)	
650.2	650.0	Green River				
1,319.4	1,300.0	Dissolution Surface				
2,264.3	2,200.0	Garden Gulch				
2,335.7	2,268.0	Orange Marker				
2,516.3	2,440.0	Upper Wasatch				
5,256.6	5,050.0	Top of "G" Sand				
5,529.5	5,310.0	Fort Union				
6,359.0	6,100.0	Lower Wasatch				
7,264.0	6,962.0	Ohio Creek				
8,019.6	7,682.0	Upper Mesaverde				
8,830.5	8,482.0	Approx. Top Gas				
10,400.5	10,052.0	Cameo Coals				
11,130.5	10,782.0	Rollins SS				
11,280.5	10,932.0	Cozzette				
11,605.5	11,257.0	Corcoran				
11,865.5	11,517.0	Sego				
12,110.5	11,762.0	Lower Segoe				
12,445.5	12,097.0	Loyd				
12,945.5	12,597.0	Castlegate				

Plan Annotations					
Measured Depth (usft)	Vertical Depth (usft)	Local Coordinates		Comment	
		+N/-S (usft)	+E/-W (usft)		
119.0	119.0	-0.7	-0.6	Conductor Tie in	
500.0	499.9	-6.5	-5.4	Build 3° / 100'	
1,110.8	1,101.3	-27.9	83.0	EOB @ 17.74° Inc. / 100.32° Azm	
7,946.7	7,612.3	-401.1	2,131.7	Drop 2° /100'	
8,833.5	8,485.0	-425.5	2,265.6	EOD @ Vertical	
13,363.5	13,015.0	-425.5	2,265.6	TD @ 13363.5' MD / 13015.0' TVD	