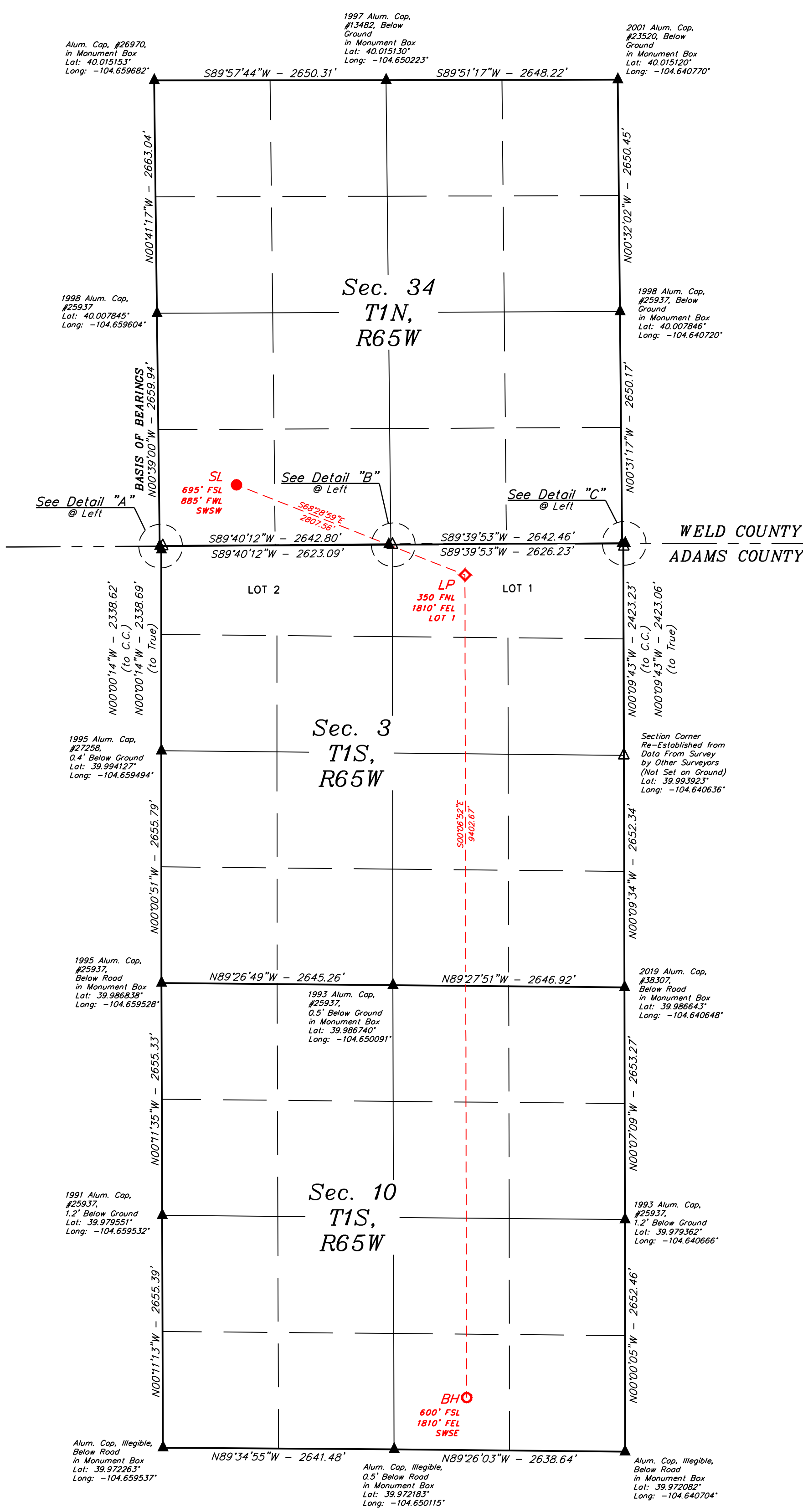
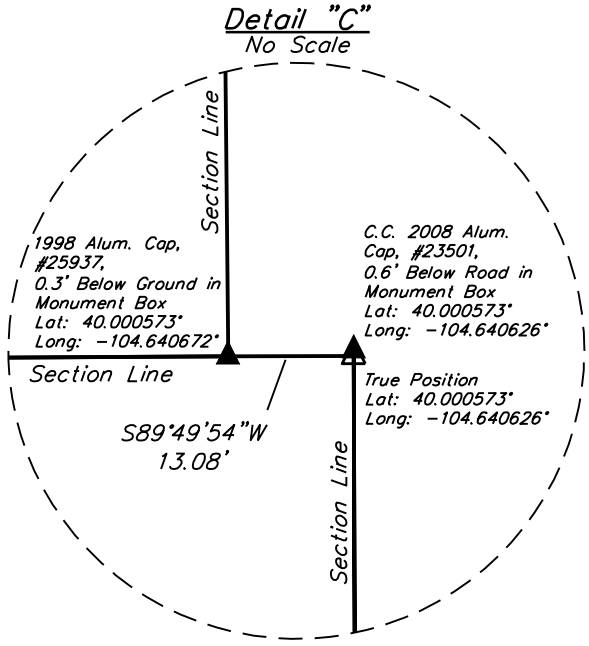
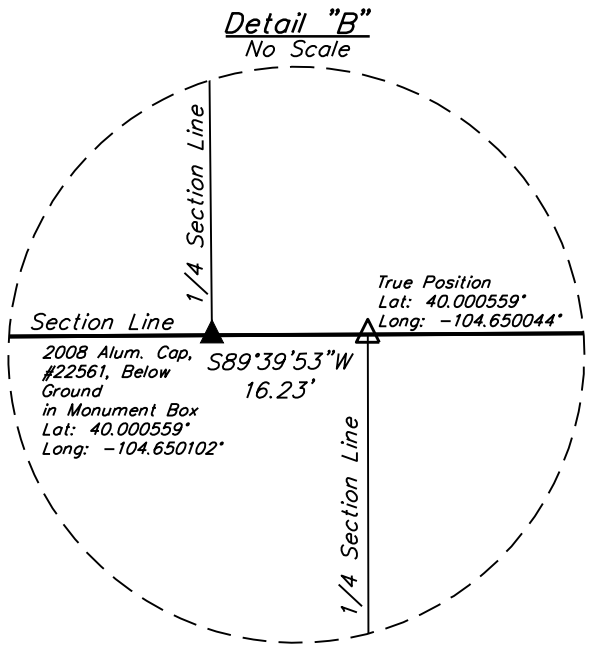
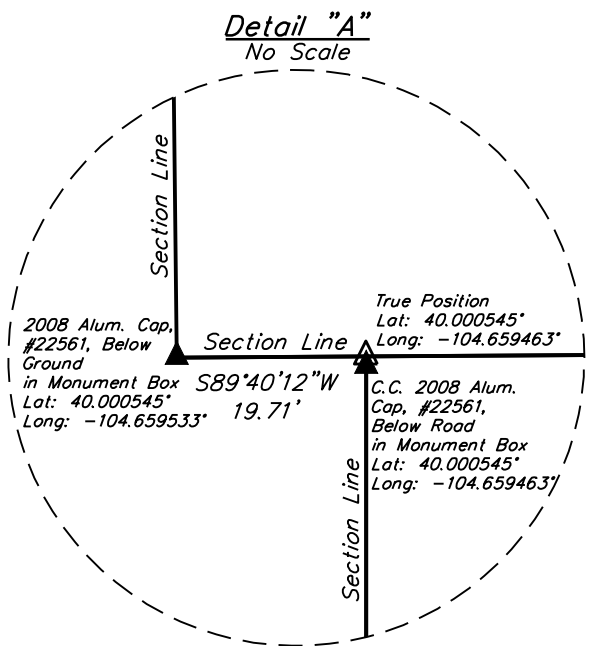


- LEGEND:**
- = SURFACE LOCATION (SL).
 - ◆ = LANDING POINT (LP).
 - = BOTTOM HOLE (BH).
 - ▲ = SECTION CORNERS LOCATED (NAD 83)
 - △ = SECTION CORNERS RE-ESTABLISHED (Not Set on Ground.) (NAD 83)

NOTE:
Distances referenced on plat to section lines are perpendicular.



PDOP = 1.4
EXISTING GROUND ELEVATION = 5139.3'

NAD 83 (SURFACE HOLE LOCATION)	
LATITUDE = 40°00'08.84" (40.002457°)	
LONGITUDE = -104°39'23.01" (-104.656392°)	
STATE PLANE NAD 83 (CO. NORTH)	
N: 1244865.98' E: 3236327.63'	

NAD 83 (LANDING POINT)	
LATITUDE = 39°59'58.57" (39.999603°)	
LONGITUDE = -104°38'49.51" (-104.647086°)	
STATE PLANE NAD 83 (CO. NORTH)	
N: 1243851.31' E: 3238944.59'	

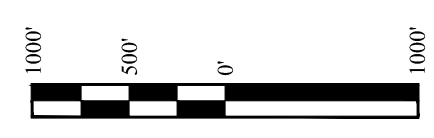
NAD 83 (BOTTOM HOLE)	
LATITUDE = 39°58'25.67" (39.973798°)	
LONGITUDE = -104°38'49.75" (-104.647152°)	
STATE PLANE NAD 83 (CO. NORTH)	
N: 1234451.48' E: 3239016.57'	

CERTIFICATE OF REGISTRATION
THIS IS TO CERTIFY THAT THE ABOVE NOTED SURVEY WAS CONDUCTED BY ME OR UNDER MY SUPERVISION AND THAT THE SAME ARE TRUE AND CORRECT TO THE BEST OF MY KNOWLEDGE AND BELIEF.

REGISTERED LAND SURVEYOR
REG. NO. 28285
STATE OF COLORADO
JULY 3-10-6N

UWINTAH
ENGINEERING & LAND SURVEYING

UELS, LLC
Corporate Office * 85 South 200 East
Vernal, UT 84078 * (435) 789-1017



REV: 01 04-13-26 K.C. (BORE, WELL NAME CHANGE & COMPANY NAME CHAGE)

DUNAMIS ENERGY OPERATING, LLC

JULY 3-10-6N
SW 1/4 SW 1/4, SECTION 34, T1N, R65W, 6th P.M.
WELD COUNTY, COLORADO

SURVEYED BY	GREG WEIMER, J.M.	04-14-26	SCALE
DRAWN BY	Q.S.J.	10-13-25	1" = 1000'

WELL LOCATION PLAT