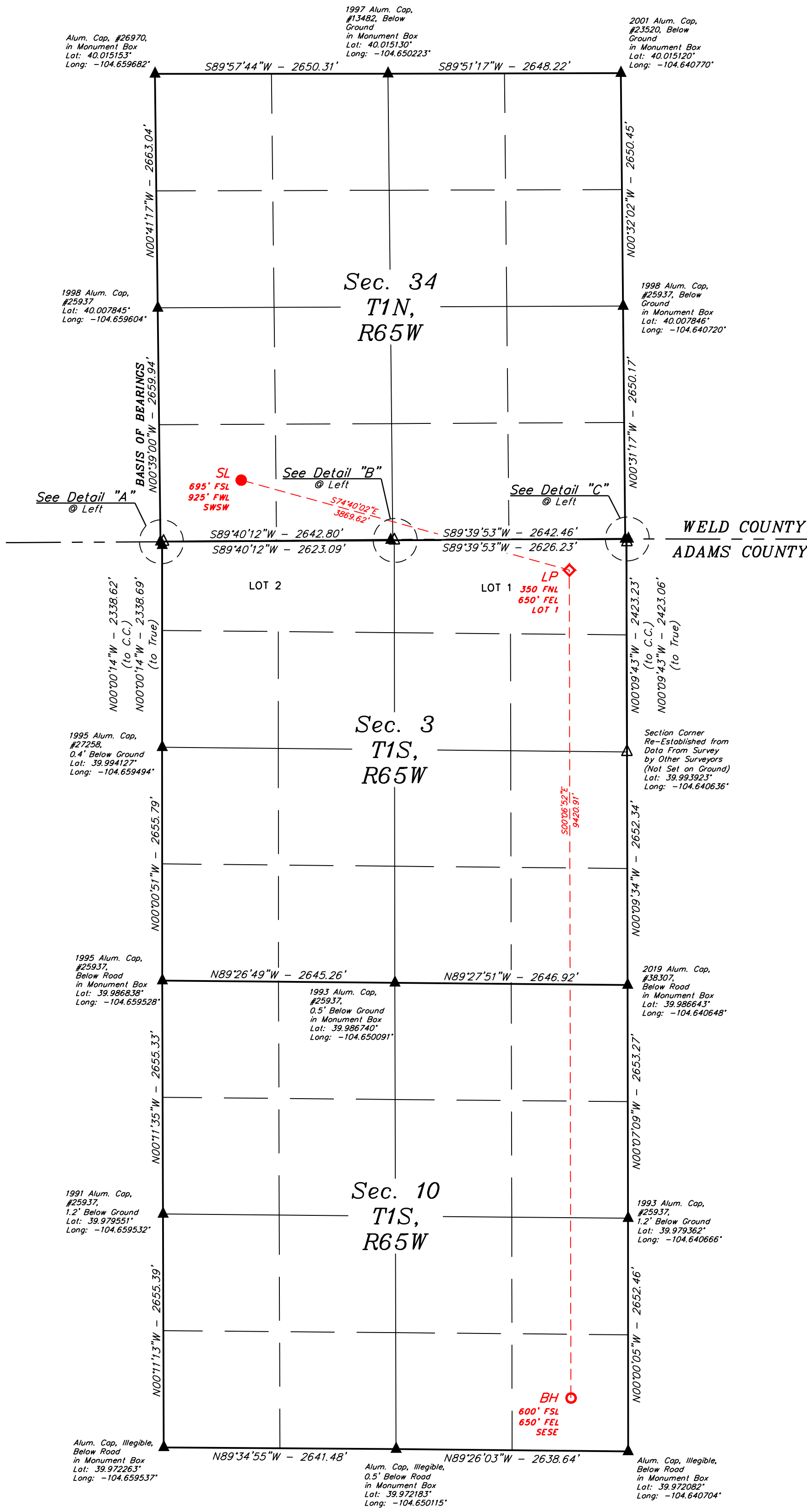
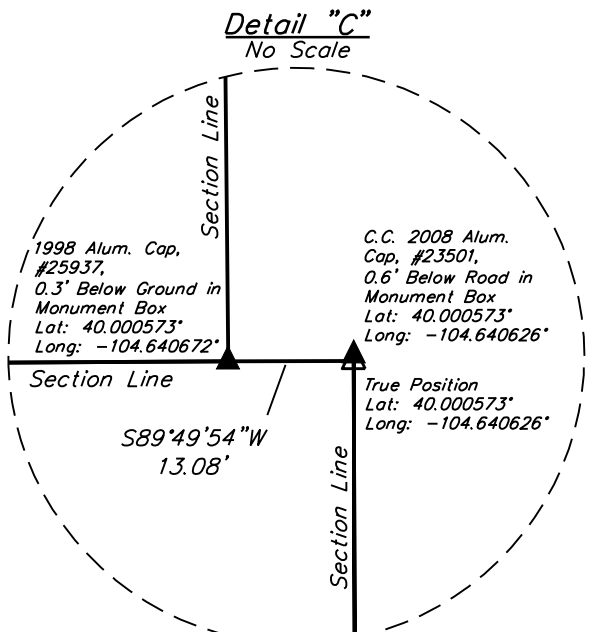
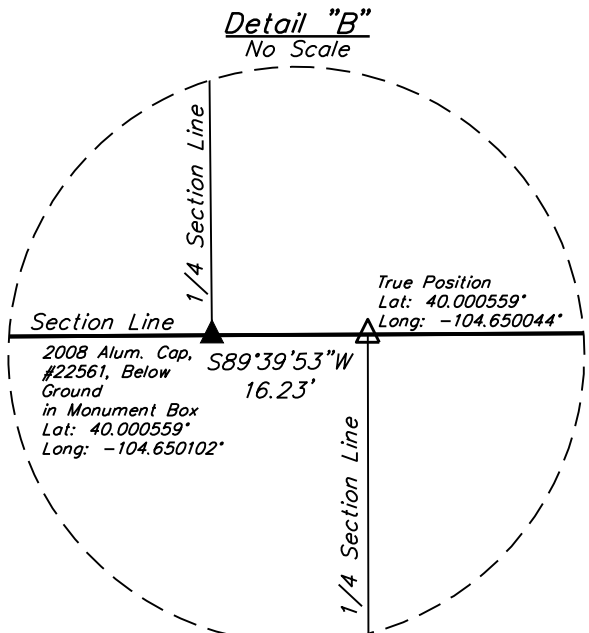
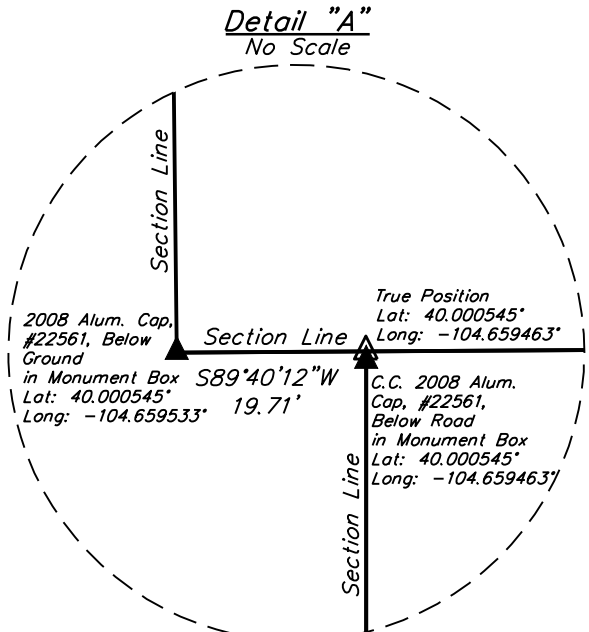


- LEGEND:**
- = SURFACE LOCATION (SL).
  - ◆ = LANDING POINT (LP).
  - = BOTTOM HOLE (BH).
  - ▲ = SECTION CORNERS LOCATED (NAD 83)
  - △ = SECTION CORNERS RE-ESTABLISHED (Not Set on Ground.) (NAD 83)

**NOTE:**  
Distances referenced on plat to section lines are perpendicular.



PDOP = 1.4  
EXISTING GROUND ELEVATION = 5138.8'

**NAD 83 (SURFACE HOLE LOCATION)**  
LATITUDE = 40°00'08.85" (40.002457°)  
LONGITUDE = -104°39'22.50" (-104.656250°)  
STATE PLANE NAD 83 (CO, NORTH)  
N: 1244866.47' E: 3236367.61'

**NAD 83 (LANDING POINT)**  
LATITUDE = 39°59'58.59" (39.999609°)  
LONGITUDE = -104°38'34.61" (-104.642947°)  
STATE PLANE NAD 83 (CO, NORTH)  
N: 1243864.65' E: 3240104.20'

**NAD 83 (BOTTOM HOLE)**  
LATITUDE = 39°58'25.51" (39.973754°)  
LONGITUDE = -104°38'34.85" (-104.643014°)  
STATE PLANE NAD 83 (CO, NORTH)  
N: 1234446.59' E: 3240176.30'

CERTIFICATE OF REGISTRATION  
THIS IS TO CERTIFY THAT THE ABOVE IS A TRUE AND CORRECT COPY OF THE ORIGINAL SURVEY PLAT AND THAT THE SAME ARE TRUE AND CORRECT TO THE BEST OF MY KNOWLEDGE AND BELIEF.  
REGISTERED LAND SURVEYOR  
REGISTRATION NO. 28285  
STATE OF COLORADO  
JULY 3-10-8N

REV: 01 04-13-26 K.C. (BORE, WELL NAME CHANGE & COMPANY NAME CHAGE)

**DUNAMIS ENERGY OPERATING, LLC**  
JULY 3-10-8N  
SW 1/4 SW 1/4, SECTION 34, T1N, R65W, 6th P.M.  
WELD COUNTY, COLORADO

SURVEYED BY GREG WEIMER, J.M. 04-14-26 SCALE  
DRAWN BY Q.S.J. 10-13-25 1" = 1000'  
**WELL LOCATION PLAT**

