

Restimulation Procedure

Wellbore Layout: See Fig. 1

Stars Federal LD17-740 (05-123-49607)

Wellhead Layout: See Fig. 2

Stars Federal LD17-740 (05-123-49607)

See Fig 3. for equipment layout – operations within existing Form 2A

2 frac tanks (fresh water only)

1 tank (fresh water & surfactant)

Piping manifold for frac tanks (water storage) and pump

1-3 acid trailers (surfactant, acid/solvent blend including <5% xylene) and associated piping

1 diverter trailer

1 Pump truck

1 safety trailer

Piping on discharge side of the Pump truck

Volume, Pressure and Rate Consideration

Total volume target 1,000 bbls

Pumping rate 1-5 bbls/min

Max pressure at surface 2,000 psia (safety kill switch setup on pump to not exceed 2,000 psi)

*Note we expect significantly lower treatment pressures based on previous similar operations, but we will not exceed the minimum frac gradient observed on this well of 0.80 psi/ft (ISIP – 2,113 psi)

Surface tubing, casing and bradenhead pressures will be monitored with live data through entire job.

Job will not exceed frac gradient.

Initial pressure on Wellhead

Tubing = 178 psi and Casing = 941 psi

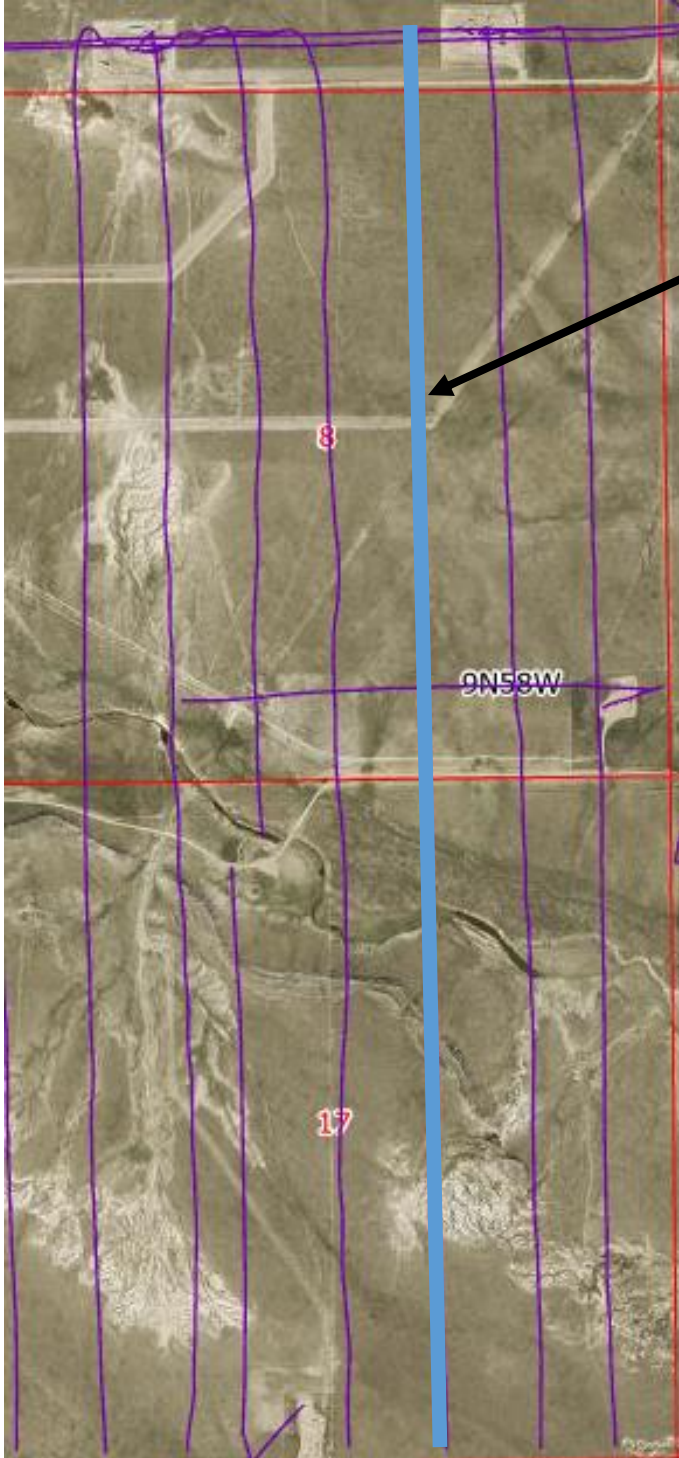
Timing

Pumping operation expected to last approximately one day including rig up and rig down. All equipment for job is temporary and will be removed after job is complete. Planned execution May-June 2026.

Procedure:

1. Rig up and test equipment on Location (frac tank, pumps, piping)
2. Open tubing
3. Start pumping at 1 bbl/min through tubing (verify and record pressure, rate and volume every 15 min)
4. If the pressure stays below 2,000 psi after 15 minutes, bump rate in 1 bbl increments up to 6 bbls/min (MAX RATE 6 BBLs/MIN AND PRESSURE 2000PSI)
5. Pump all 1,000 bbls away. Monitor Pressure on job well and offset wells.
6. Flush surface piping.
7. Shut well in after all volume pumped.
8. RDMO
9. Bring well back online

Fig. 1

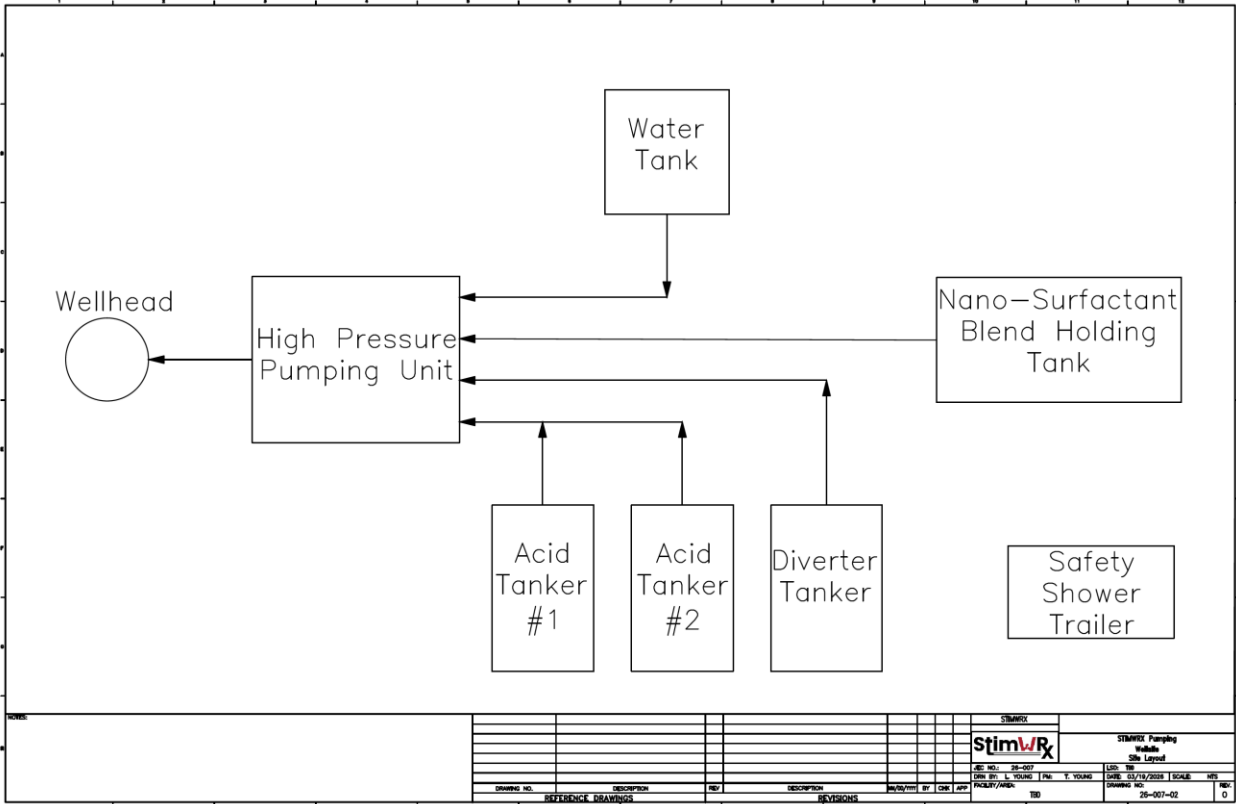


Restimulation Job Well
Stars Federal LD17-740

Fig. 2



Fig. 3



STIMWRX									
STIMWRX Pumping Wellbore Site Layout									
Dwg No. 26-007					Date 03/19/2018				
Dwg By L. Young					Scale 1"=10'				
Project/Phase TSD					Drawn By 26-007-02				
Sheet No.					Sheet Count				
Reference Drawings					Revisions				



Wellbore Schematic Input Report

Well Name: STARS FEDERAL LD17-740

Original Hole [Land]		Well Header			
MD (ft)	Incl (°)	Surface UWI	Business Unit	Gov Auth Dist	Prod Tree Loc
		0512349607	Rookies		Land
		Original RKB Elevation (ft)	Original KB to Ground (ft)	Original Spud Date	Abandon Date
		4,827.00	30.00	5/29/2019	
		Comment			
		Directions To Well CR 119, from CR 104 & CR 119, north 2.0 miles, east 1.5 miles, southeast 0.4 miles, east 0.5 miles, north-northeast 0.4 miles, east 0.2 miles, north into location.			
		Congressional Location			
		Quarter 3	Quarter 4	Section	Township
		SW	SE	5	9
					Township N/S Dir
					Range
					Range E/W Dir
					58
					W
		Bottom Hole Legal Location			
		Bottom Hole Legal Location SWSE 17-9N-58W			
		Wellbore Plug Back Total Depths			
		Date	PBTD (ft)	Method	Com
		6/3/2019	16,488	CASING TALLY	FLOAT COLLAR
		9/9/2019	16,429	TAG	WE DRILLED 40 PLUGS AND CLEANED OUT 30' PAST
		Wellbore Sections			
		Section Des	Hole Size (in)	Top Depth (ft)	Btn Depth (ft)
		PRODUCTION	8 1/2		
		CONDUCTOR	26	30.0	110.0
		SURFACE	13 1/2	110.0	1,968.0
		PRODUCTION	8 1/2	1,968.0	16,556.0
		Zone Statuses			
		Zone Name	Status Date	Status	Fluid Type
		NIORARA	10/3/2019	PR	GAS
		NIORARA	10/3/2019	PR	WATER
		NIORARA	10/3/2019	PR	OIL
		NIORARA	10/11/2019	PR	GAS
		NIORARA	10/11/2019	PR	OIL
		Casing Strings			
		Conductor, Actual, 110ftRKB			
		Casing Description	Run Date	OD (in)	Wt/Len (lb/ft)
		Conductor	4/17/2019	16	36.94
				Grade	Top Depth (ft)
				A-52A	30
					Set Depth (ft)
					110
		SURFACE, Actual, 1958.5ftRKB			
		Casing Description	Run Date	OD (in)	Wt/Len (lb/ft)
		SURFACE	5/29/2019	9 5/8	36.00
				Grade	Top Depth (ft)
				J-55	30
					Set Depth (ft)
					1958.5
		Production Casing, Actual, 16535.6ftRKB			
		Casing Description	Run Date	OD (in)	Wt/Len (lb/ft)
		Production Casing	6/3/2019	5 1/2	17.00
				Grade	Top Depth (ft)
				P-110	29.9
					Set Depth (ft)
					16535.6
		Cement			
		Des	Top (ft)	Btn (ft)	
		Conductor Cement	30.0	110.0	
		Surface Casing Cement	30.0	1,958.5	
		Production Casing Cement	2,985.0	16,535.6	
		Tubing Strings			
		Tubing Description	Run Date	String Max ID (in)	Wt (lb/ft)
		Tubing - Production	9/18/2019	2 3/8	2,000
				Grade	Len (ft)
				L-80	6,045.48
					Set Depth (ft)
					5,834.2
		Tubing Components			
		Item Des	OD (in)	Wt (lb/ft)	Grade
		Mandrel	7 1/8	4.70	N-80
				Jts	Len (ft)
				1	0.50
					Btn (ft)
					30.5
					Set Depth (ft)
					30.4
		Tubing Pup Joint	2 3/8	4.70	N-80
					Len (ft)
				1	10.10
					Btn (ft)
					40.6
					Set Depth (ft)
					40.5
		Tubing	2 3/8	4.60	L-80
					Len (ft)
				56	1,822.21
					Btn (ft)
					1,862.8
					Set Depth (ft)
					1,862.7
		Gas Lift Mandrel	3 1/16	4.70	N-80
					Len (ft)
				1	4.10
					Btn (ft)
					1,866.9
					Set Depth (ft)
					1,866.8
		Tubing	2 3/8	4.70	L-80
					Len (ft)
				24	780.70
					Btn (ft)
					2,647.6
					Set Depth (ft)
					2,647.5
		Gas Lift Mandrel	3.783	4.70	N-80
					Len (ft)
				1	4.10
					Btn (ft)
					2,651.7
					Set Depth (ft)
					2,651.6
		Tubing	2 3/8	4.70	L-80
					Len (ft)
				20	650.55
					Btn (ft)
					3,302.2
					Set Depth (ft)
					3,295.5
		Gas Lift Mandrel	3.783	4.70	N-80
					Len (ft)
				1	4.10
					Btn (ft)
					3,306.3
					Set Depth (ft)
					3,299.5
		Tubing	2 3/8	4.70	L-80
					Len (ft)
				16	520.55
					Btn (ft)
					3,826.9
					Set Depth (ft)
					3,811.8
		Gas Lift Mandrel	3.783	4.70	N-80
					Len (ft)
				1	4.10
					Btn (ft)
					3,831.0
					Set Depth (ft)
					3,815.8
		Tubing	2 3/8	4.70	L-80
					Len (ft)
				15	487.96
					Btn (ft)
					4,318.9
					Set Depth (ft)
					4,296.6
		Gas Lift Mandrel	3.783	4.70	N-80
					Len (ft)
				1	4.10
					Btn (ft)
					4,323.0
					Set Depth (ft)
					4,300.6
		Tubing	2 3/8	4.70	L-80
					Len (ft)
				16	520.14
					Btn (ft)
					4,843.2
					Set Depth (ft)
					4,813.8
		Gas Lift Mandrel	3.783	4.70	N-80
					Len (ft)
				1	4.10
					Btn (ft)
					4,847.3
					Set Depth (ft)
					4,817.8