

Click here to reset the form

FORM 21 Rev 9/14

State of Colorado Oil and Gas Conservation Commission



1120 Lincoln Street, Suite 801, Denver, Colorado 80203 (303)-894-2100 Fax: (303)-894-2109

FOR OGCC USE ONLY

Document Number:

Date Received:

MECHANICAL INTEGRITY TEST

- 1. Duration of the pressure test must be a minimum of 15 minutes.
2. An original pressure chart must accompany this report if this test was not witnessed by a OGCC representative.
3. For production wells, test pressures must be at a minimum of 300 psig.
4. New injection wells must be tested to maximum requested injection pressure.
5. For injection wells, test pressures must be at least 300 psig or average injection pressure, whichever is greater.
6. A minimum 300 psi differential pressure must be maintained between the tubing and tubing/casing annulus pressure.
7. Do not use this form if submitting under provisions of Rule 326.a.(1) B. or C.
8. OGCC notification must be provided 10 days prior to the test via Form 42.
9. Packers or bridge plugs, etc., must be set within 100 feet of the perforated interval to be considered a valid test.

Complete the Attachment Checklist

OGCC Operator Number: 10779
Contact Name and Telephone: Anita Sanford
Name of Operator: Scout Energy Management
Address: 100 Chevron Road
City: Rangely State: CO Zip: 81648
API Number: 05-103-08813 OGCC Facility ID Number: 47443 / Rangely Field 72370
Well/Facility Name: CARNEY Well/Facility Number: 38X4
Location QtrQtr: NW NE Section: 4 Township: 2N Range: 102W Meridian: 6th

Table with columns: Oper, OGCC. Rows: Pressure Chart, Cement Bond Log, Tracer Survey, Temperature Survey, Inspection Number.

SHUT-IN PRODUCTION WELL INJECTION WELL Last MIT Date: 08/08/2022

- Test Type:
Test to Maintain SI/TA status
Verification of Repairs
5- year UIC
Annual UIC Test
Reset Packer

Describe Repairs or Other Well Activities: OBW well repaired tubing & packer return to active injection

Casing Test

Use when perforations or open hole is isolated by bridge plug or cement plug; use if cased-hole only with plug back total depth.

Wellbore Data at Time of Test

Injection/Producing Zone(s): Weber
Perforated Interval: 5727-6393'
Open Hole Interval:

Bridge Plug or Cement Plug Depth

Tubing Casing/Annulus Test

Tubing Size: 2 7/8'
Tubing Depth: 6399
Top Packer Depth: 5605
Multiple Packers? Yes No

Test Data

Table with columns: Test Date, Well Status During Test, Casing Pressure Before Test, Initial Tubing Pressure, Final Tubing Pressure, Casing Pressure Start Test, Casing Pressure - 5 Min., Casing Pressure - 10 Min., Casing Pressure Final Test, Pressure Loss or Gain During Test.

Test Witnessed by State Representative?

Yes No

OGCC Field Representative (Print Name):

Aaron Katz

I hereby certify that the statements made in this form are, to the best of my knowledge, true, correct, and complete.

Print Name: Anita Sanford Form 42# 404625766 Field Inspection # 692602819

Signed: [Signature] Title: Sr. Regulatory Analyst Date: 05/27/2026

OGCC Approval: Title: West Area Engineer Date: 05/27/2026

Conditions of Approval, if any:

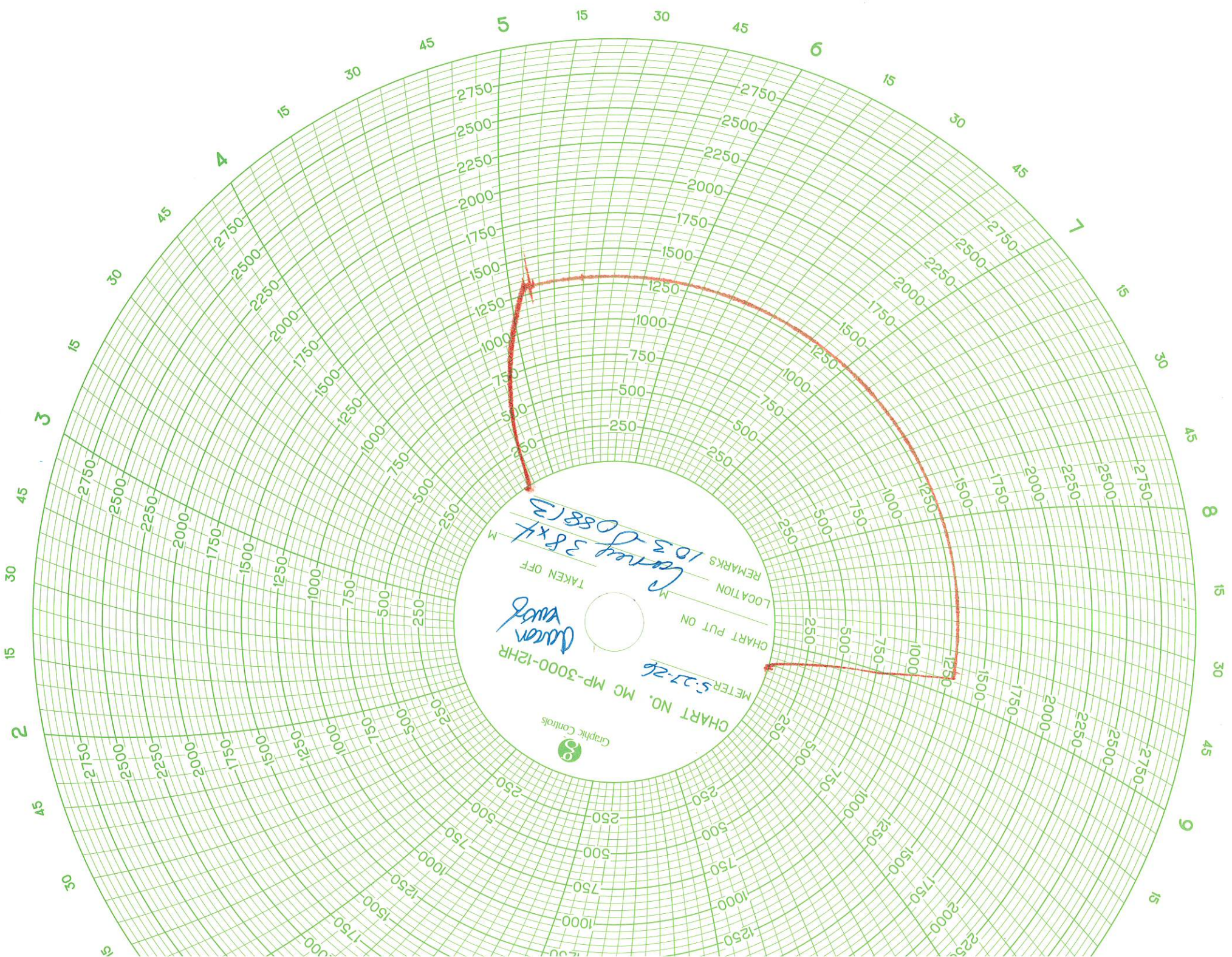


CHART NO. MC MP-3000-12HR
METER 537-26
CHART PUT ON
LOCATION
TAKEN OFF
REMARKS
Dusen
Ward
January 38th
103-08813

