



CDH Consulting, LLC  
Thornton, Colorado  
720.431.7468  
[www.CDHConsult.com](http://www.CDHConsult.com)

## **Wellhead Closure Investigation and Environmental Summary**

MONFORT-PM K 3-13 Wellhead  
ECMC Remediation Project #42925  
Weld County, Colorado

### **Attachments:**

**Field Form**

**Boring Logs**

**Figure 1 – Site Location Map**

**Figure 2 – Soil Sample and Field Screening Locations Map**

**Table 1 – Field Data Summary Table**

**Table 2 – Summary of Volatile Organic Soil Chemistry Data**

**Table 3 – Summary of Polycyclic Aromatic Hydrocarbon Soil Chemistry Data**

**Table 4 – Summary of Soil Suitability for Reclamation**

**Table 5 – Summary of Metals in Soil Chemistry Data**

**Photographic Log**

**Wellhead Closure Checklist**



CDH Consulting, LLC  
Thornton, Colorado  
720.431.7468  
[www.CDHConsult.com](http://www.CDHConsult.com)

## **FIELD FORM**

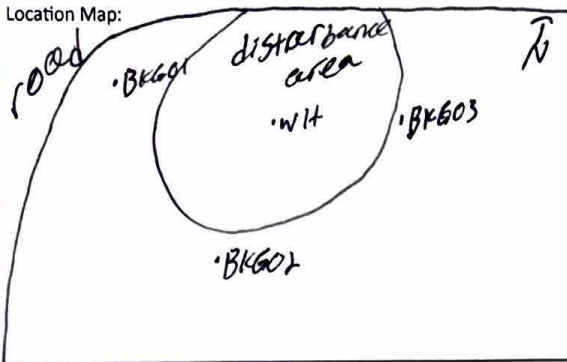




CDH Consulting, LLC  
Thornton, Colorado  
720.431.7468  
[www.CDHConsult.com](http://www.CDHConsult.com)

## **BORING LOGS**

Location Map:



CDH Consulting, LLC  
www.CDHConsult.com

**BORING LOG/MONITORING WELL COMPLETION DIAGRAM**

Boring/Well Number: <i>BK601</i>	Project: <i>Monfort PM K03-13</i>
Date: <i>2/13/26</i>	Client: Chevron
Logged By: <i>Nathan Ingebritson</i>	Drilled By: CDH
Drilling Method: Hand Auger	Sampling Method: Continuous
Gravel Pack: N/A	Seal: N/A
Casing Type: N/A	Grout: N/A
Screen Type: N/A	Slot: N/A
Diameter: N/A	Length: N/A
Hole Diameter: 3.25"	Depth to Liquid: <i>N/A</i>
Diameter: N/A	Length: N/A
Total Depth: 4'	Depth to Water: <i>N/A</i>

Penetration Resistance	Moisture Content	Vapor (ppm)	Staining	Sample #	Depth (ft. bgs.)	Sample Run	Soil/Rock Type	Lithology/Remarks	Well Completion
	<i>Dry</i>	<i>0.0</i>	<i>NO</i>	<i>1</i>	0		<i>0-4'</i>	<i>0-4': SW soil from 0-4', however, for about the first 1'-1.5' there was extreme penetration resistance. Afterwards, it was soft and easy. Ton in color, no s/c.</i>	
					1		<i>SW</i>		
					2	<i>1</i>			
					3				
					4				
					5				
					6				
					7				
					8				
					9				
					10				
					11				
					12				
					13				
					14				
					15				

Location Map:

*Same as on BK601109*



CDH Consulting, LLC  
www.CDHConsult.com

**BORING LOG/MONITORING WELL COMPLETION DIAGRAM**

Boring/Well Number: <i>BK602</i>	Project: <i>MONFORT PM K03-13</i>
Date: <i>1<sup>st</sup> 213126</i>	Client: Chevron
Logged By:	Drilled By: CDH

Elevation: <i>4720'</i>	Detector: <i>Mini'rae 3000</i>	Drilling Method: Hand Auger	Sampling Method: Continuous
Gravel Pack: N/A	Seal: N/A	Grout: N/A	
Casing Type: N/A	Diameter: N/A	Length: N/A	Hole Diameter: 3.25" Depth to Liquid: <i>N/A</i>
Screen Type: N/A	Slot: N/A	Diameter: N/A	Length: N/A Total Depth: <i>4'</i> Depth to Water: <i>N/A</i>

Penetration Resistance	Moisture Content	Vapor (ppm)	Staining	Sample #	Depth (ft. bgs.)	Sample Run	Soil/Rock Type	Lithology/Remarks	Well Completion
<del>██████████</del>					0		0-4' SW	<i>0-4': SW soil from 0-4', however, for about the first 1'-1.5' there was extreme penetration resistance. Afterwards, it was soft and easy. Tan in color, no silt.</i>	
	<i>Dry</i>	<i>0.0</i>	<i>NO</i>	<i>1</i>	1				
					2	<i>1</i>			
					3				
					4				
					5				
					6				
					7				
					8				
					9				
					10				
					11				
					12				
					13				
					14				
					15				

Location Map:

*same as on BK601 log*



CDH Consulting, LLC  
www.CDHConsult.com

**BORING LOG/MONITORING WELL COMPLETION DIAGRAM**

Boring/Well Number: <i>BK603</i>	Project: <i>Menfort PM K03-13</i>
Date: <i>2/3/26</i>	Client: Chevron
Logged By:	Drilled By: CDH

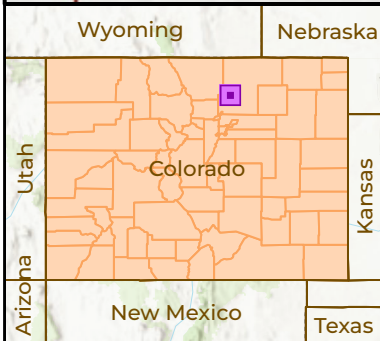
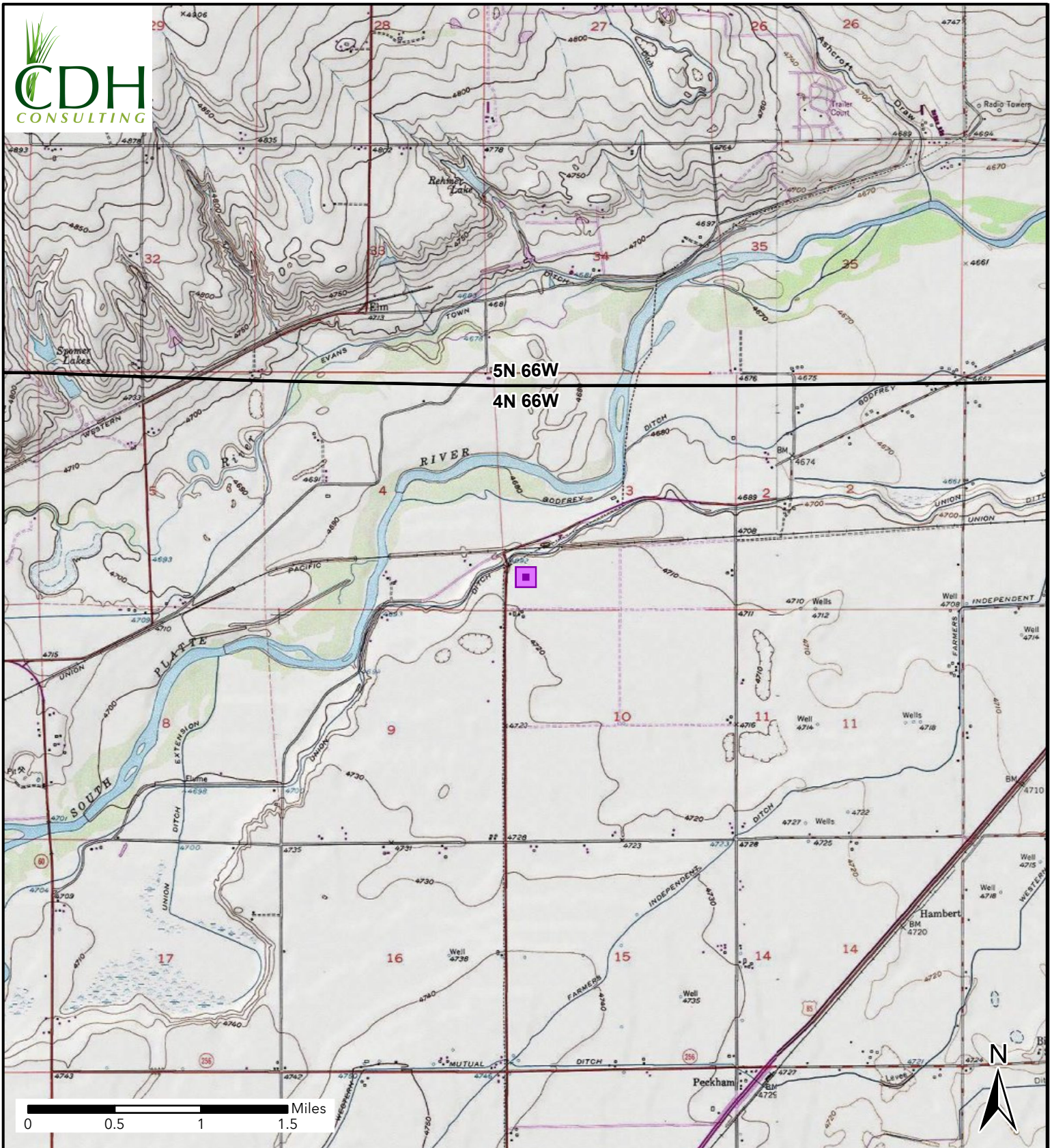
Elevation: <i>4720'</i>	Detector: <i>Mini rae 3000</i>	Drilling Method: Hand Auger	Sampling Method: Continuous
Gravel Pack: N/A	Seal: N/A	Grout: N/A	
Casing Type: N/A	Diameter: N/A	Length: N/A	Hole Diameter: 3.25"
Screen Type: N/A	Slot: N/A	Diameter: N/A	Length: N/A
		Total Depth: <i>4'</i>	Depth to Liquid: <i>N/A</i>
			Depth to Water: <i>N/A</i>

Penetration Resistance	Moisture Content	Vapor (ppm)	Staining	Sample #	Depth (ft. bgs.)	Sample Run	Soil/Rock Type	Lithology/Remarks	Well Completion
<del>████████</del>	<i>DRY</i>	<i>0.0</i>	<i>NO</i>	<i>1</i>	0		<i>0-4' SW</i>	<i>0-4': SW soil from 0-4', however, for about the first 1'-1.5' there was extreme penetration resistance. Afterwards it was soft and easy. Tan in color, NO SIO.</i>	
					1	<i>1</i>			
					2				
					3				
					4				
					5				
					6				
					7				
					8				
					9				
					10				
					11				
					12				
					13				
					14				
					15				



CDH Consulting, LLC  
Thornton, Colorado  
720.431.7468  
[www.CDHConsult.com](http://www.CDHConsult.com)

## FIGURES

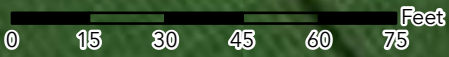


**Figure 1**  
**Site Location Map**  
**MONFORT PM K03-13**  
SWSW-SEC 3-T4N-R66W  
Weld County, Colorado  
Noble Energy Inc.

 Site Location



**NOTE:**  
 XXXX@X = Sample Name @ Depth in Feet



## Figure 2 Soil Sample and Field Screening Locations Map

MONFORT PM K03-13  
 SWSW-SEC 03-T4N-R66W  
 Weld County, Colorado  
 Noble Energy Inc.

- Soil Sample
- Screening Point
- Background Sample
- Flowline Abandoned In Place



CDH Consulting, LLC  
Thornton, Colorado  
720.431.7468  
[www.CDHConsult.com](http://www.CDHConsult.com)

## **TABLES**

**TABLE 1  
FIELD DATA SUMMARY TABLE  
NOBLE 100322  
MONFORT-PM K 3-13, WELD COUNTY, COLORADO  
REM # 42925**

Sample ID	Sample Date	Depth (ft)	GPS Data		PDOP Value	VOC Concentration (ppm)	Consultant Who Collected Samples
			Latitude/Longitude				
WH01@4.5'	2/3/2026	4.5	40.335744	-104.771412	1.100000	0.3	CDH
WH01-N@3.5'	2/3/2026	3.5	40.335758	-104.771410	1.100000	0.2	CDH
WH01-S@3.5'	2/3/2026	3.5	40.335730	-104.771405	1.000000	0.0	CDH
WH01-E@3.5'	2/3/2026	3.5	40.335747	-104.771390	1.100000	0.0	CDH
WH01-W@3.5'	2/3/2026	3.5	40.335745	-104.771432	1.100000	0.2	CDH
BKG01@4'	2/3/2026	4	40.335829	-104.771888	1.000000	0.0	CDH
BKG02@4'	2/3/2026	4	40.335399	-104.771221	1.300000	0.0	CDH
BKG03@4'	2/3/2026	4	40.335843	-104.770930	1.100000	0.0	CDH

1. Global Positioning System (GPS) data is provided in decimal degrees using North American Datum (NAD) 83.

2. Volatile organic compound (VOC) concentrations are measured in the field using a photoionization detector (PID).

PDOP = Position Dilution of Precision

ppm = Parts per million

in = Inches

ft = Feet

bgs = Below ground surface

TABLE 2  
SUMMARY OF VOLATILE ORGANIC SOIL CHEMISTRY DATA  
NOBLE 100322  
MONFORT-PM K 3-13, WELD COUNTY, COLORADO  
REM # 42925

Sample ID	Sample Date	Depth (ft)	Benzene (mg/kg)	Toluene (mg/kg)	Ethyl-Benzene (mg/kg)	Xylenes (mg/kg)	1,2,4- Trimethyl- Benzene (mg/kg)	1,3,5- Trimethyl- Benzene (mg/kg)	Naphthalene (mg/kg)	TPH (mg/kg)	TPH GRO (mg/kg)	TPH DRO (mg/kg)	TPH ORO (mg/kg)
ECMC Table 915-1 Limits (Residential SSL)			1.2	490	5.8	58	30	27	2	500	500***		
ECMC Table 915-1 Limits (Protection of Groundwater SSL)			0.0026	0.69	0.78	9.9	0.0081	0.0087	0.0038	500	500***		
WH01@4.5'	2/3/2026	4.5	<0.0010	<0.0021	<0.0021	<0.0021	<0.0021	<0.0021	<0.0021	80.4	<0.21	29.7	50.7

1. Bold values exceed the ECMC Table 915-1 limit(s)
  2. Red & blue highlighted soil analytical values indicate an exceedance of the referenced soil screening level (SSL)
  3. \* Indicates laboratory minimum detection limit in excess of SSL
  4. \*\* Indicates laboratory reporting limit in excess of SSL
  5. \*\*\* Summation of GRO+DRO+ORO must be less than 500 mg/kg
  6. Samples are reported as dry weight unless otherwise indicated in the laboratory PDF report(s).
- (<) = Analytical result is less than the indicated laboratory reporting limit.  
TPH-GRO = Total petroleum hydrocarbons - gasoline range organics  
TPH-DRO = Total petroleum hydrocarbons - diesel range organics  
TPH-ORO = Total petroleum hydrocarbons - oil range organics  
mg/kg = Milligrams per kilogram  
ft = Feet  
bgs = Below ground surface

TABLE 3  
SUMMARY OF POLYCYCLIC AROMATIC HYDROCARBON SOIL CHEMISTRY DATA  
NOBLE 100322  
MONFORT-PM K 3-13, WELD COUNTY, COLORADO  
REM # 42925

Sample ID	Sample Date	Depth (ft)	Acenaphthene (mg/kg)	Anthracene (mg/kg)	Benzo (a) Anthracene (mg/kg)	Benzo (a) Pyrene (mg/kg)	Benzo (b) Fluoranthene (mg/kg)	Benzo (k) Fluoranthene (mg/kg)	Chrysene (mg/kg)	Dibenzo (a,h) Anthracene (mg/kg)	Fluoranthene (mg/kg)	Fluorene (mg/kg)	Indeno (1,2,3-cd) Pyrene (mg/kg)	Pyrene (mg/kg)	1-Methyl - Naphthalene (mg/kg)	2-Methyl - Naphthalene (mg/kg)
ECMC Table 915-1 Limits (Residential SSL)			360	1800	1.1	0.11	1.1	11	110	0.11	240	240	1.1	180	18	24
ECMC Table 915-1 Limits (Protection of Groundwater SSL)			0.55	5.8	0.011	0.24	0.3	2.9	9	0.096	8.9	0.54	0.98	1.3	0.006	0.019
WH01@4.5'	2/3/2026	4.5	<0.0042	<0.0042	<0.0052	<0.0042	<0.0042	<0.0042	<0.0042	<0.0042	<0.0042	<0.0042	<0.0042	<0.0042	<0.0042	<0.0042

1. Bold values exceed the ECMC Table 915-1 limit(s)
  2. Red & blue highlighted soil analytical values indicate an exceedance of the referenced soil screening level (SSL)
  3. \* Indicates laboratory minimum detection limit in excess of SSL
  4. \*\* Indicates laboratory reporting limit in excess of SSL
  5. Samples are reported as dry weight unless otherwise indicated in the laboratory PDF report(s).
- (<) = Analytical result is less than the indicated laboratory reporting limit.  
mg/kg = Milligrams per kilogram  
ft = Feet  
bgs = Below ground surface

**TABLE 4**  
**SUMMARY OF SOIL SUITABILITY FOR RECLAMATION**  
**NOBLE 100322**  
**MONFORT-PM K 3-13, WELD COUNTY, COLORADO**  
**REM # 42925**

Sample ID	Sample Date	Depth (ft)	pH (Standard Units)	EC (mmhos/cm)	SAR (Standard Units)	Boron (mg/L)
ECMC Table 915-1 Soil Suitability Limits			6 - 8.3	<4	<6	2
WH01@4.5'	2/3/2026	4.5	8.04	0.70	2.28	<0.25
BKG01@4'	2/3/2026	4	7.39	0.47	2.46	<0.25
BKG02@4'	2/3/2026	4	7.92	0.34	0.863	<0.25
BKG03@4'	2/3/2026	4	7.66	0.26	0.975	<0.25
Maximum Background Concentration			7.92	0.47	2.46	NA

1. **Bold** faced values exceed the ECMC Table 915-1 limit(s), but are within background concentrations.

2. **Bold** faced values exceed the ECMC Table 915-1 limit(s) and native background concentrations.

3. Brown highlighted soil analytical values indicate a regulatory exceedance.

4. Samples are reported as dry weight unless otherwise indicated in the laboratory PDF report(s).

ft = Feet

EC = Electrical Conductivity

SAR = Sodium adsorption ratio

mmhos/cm = millimhos per centimeter

mg/L = milligrams per liter

(<) = Analytical result is less than the indicated laboratory reporting limit

NA = Not analyzed

TABLE 5  
SUMMARY OF METALS IN SOIL CHEMISTRY DATA  
NOBLE 100322  
MONFORT-PM K 3-13, WELD COUNTY, COLORADO  
REM # 42925

Sample ID	Sample Date	Depth (ft)	Arsenic (mg/kg)	Barium (mg/kg)	Cadmium (mg/kg)	Chromium (VI) (mg/kg)	Copper (mg/kg)	Lead (mg/kg)	Nickel (mg/kg)	Selenium (mg/kg)	Silver (mg/kg)	Zinc (mg/kg)
ECMC Table 915-1 Limits (Residential SSL)			0.68	15000	71	0.3	3100	400	1500	390	390	23000
ECMC Table 915-1 Limits (Protection of Groundwater SSL)			0.29	82	0.38	0.00067	46	14	26	0.26	0.8	370
WH01@4.5'	2/3/2026	4.5	<b>1.1</b>	61.9	0.11	<0.45**	5.9	13.4	3.5	<0.21	<0.11	26.9
BKG01@4'	2/3/2026	4	<b>0.91</b>	38.2	<0.099	<0.40**	4.0	4.9	3.6	<0.20	<0.099	16.7
BKG02@4'	2/3/2026	4	<b>1.5</b>	48.1	<0.11	<0.41**	3.3	4.7	3.6	<0.22	<0.11	15.6
BKG03@4'	2/3/2026	4	<b>1.2</b>	47.2	<0.099	<0.42**	3.4	8.1	3.4	<0.20	<0.099	15.4
1.25x Maximum Background Concentration			1.9	60.1	NA	NA	5.0	10.1	4.5	NA	NA	20.9

- 1.** Bold faced values exceed the ECMC Table 915-1 limit(s), but are within 1.25x background concentrations.
- 2.** Bold faced values exceed the ECMC Table 915-1 limit(s) and native background concentrations.
- 3.** Red & blue highlighted soil analytical values indicate an exceedance of the referenced soil screening level (SSL).
- 4.** Non-detect background results accounted for in the highest background concentration by using the reporting limit.
- 5.** Samples are reported as dry weight unless otherwise indicated in the laboratory PDF report(s)

ECMC = Energy & Carbon Management Commission

(<) = Analytical result is less than the indicated laboratory reporting limit.

mg/kg = Milligrams per kilogram

ft = Feet

bgs = Below ground surface

\* Indicates laboratory minimum detection limit in excess of SSL

\*\* Indicates laboratory reporting limit in excess of SSL

NA = Not analyzed



CDH Consulting, LLC  
Thornton, Colorado  
720.431.7468  
[www.CDHConsult.com](http://www.CDHConsult.com)

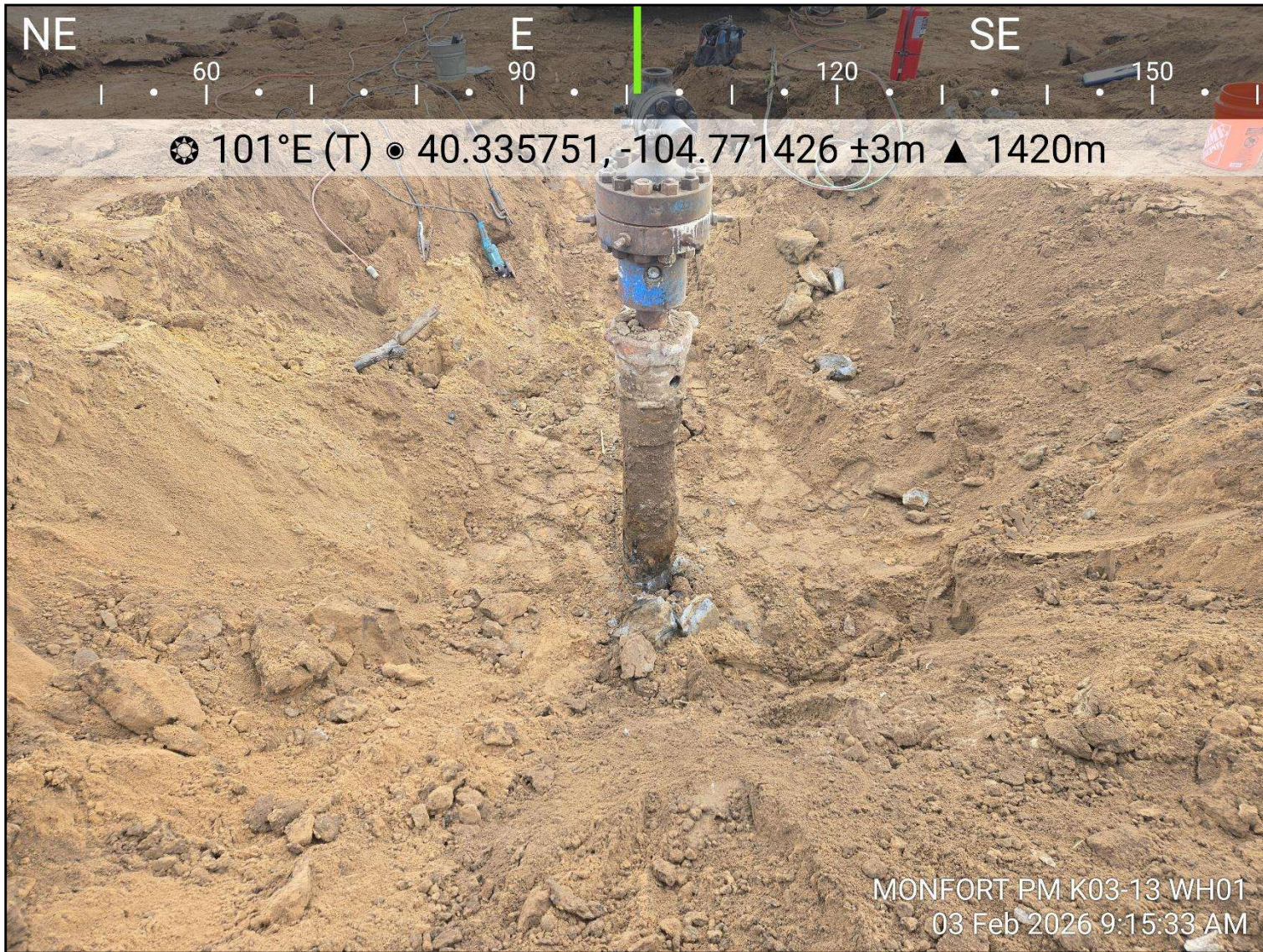
## PHOTOGRAPHIC LOG

**Photographic Log**  
MONFORT-PM K 3-13 – REM# 42925  
Noble Energy, Inc  
2/3/2026



**Photo 1:** View of excavation, facing east-southeast

**Photographic Log**  
MONFORT-PM K 3-13 – REM# 42925  
Noble Energy, Inc  
2/3/2026



**Photo 2:** View of excavation, facing east

**Photographic Log**

MONFORT-PM K 3-13 – REM# 42925

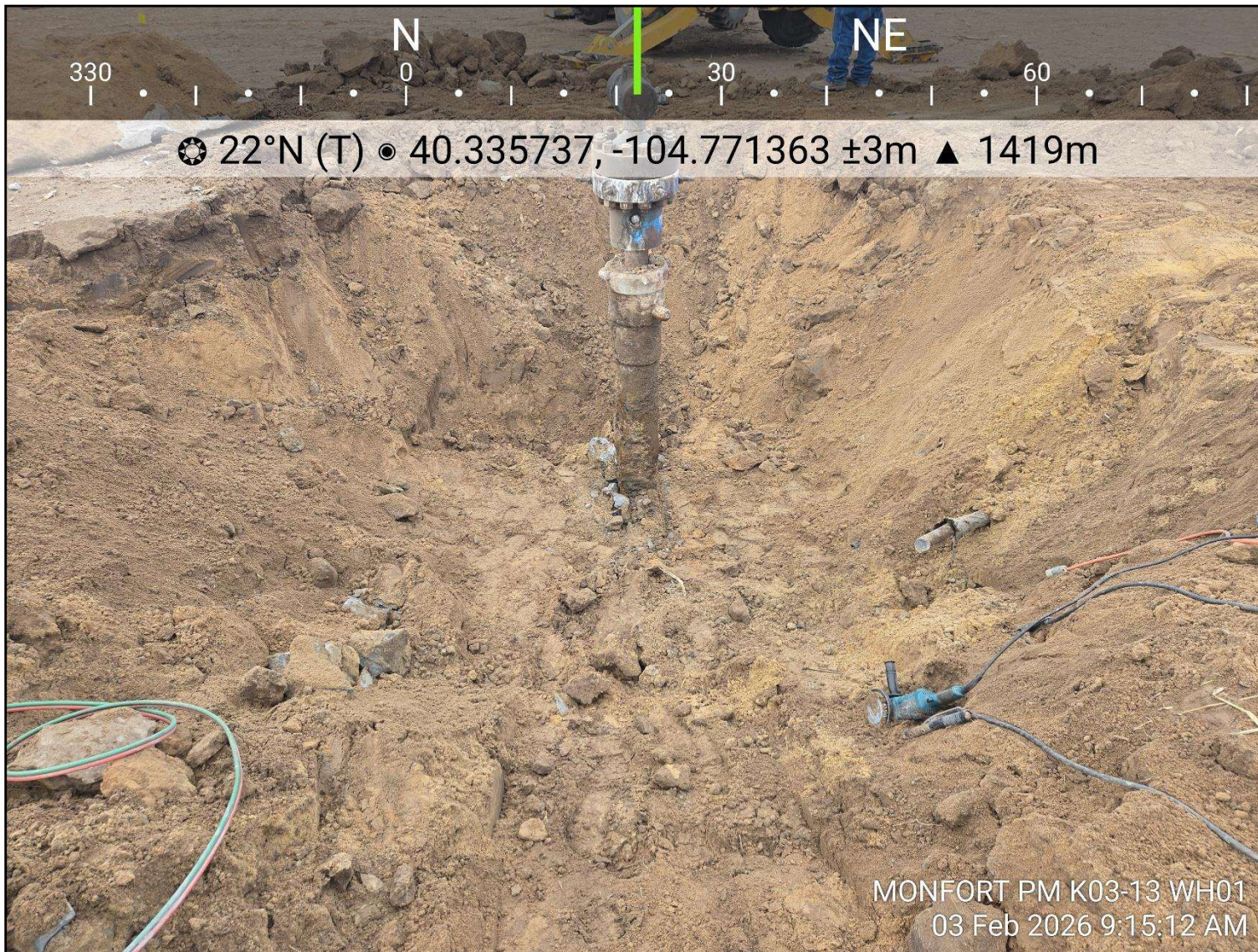
Noble Energy, Inc

2/3/2026



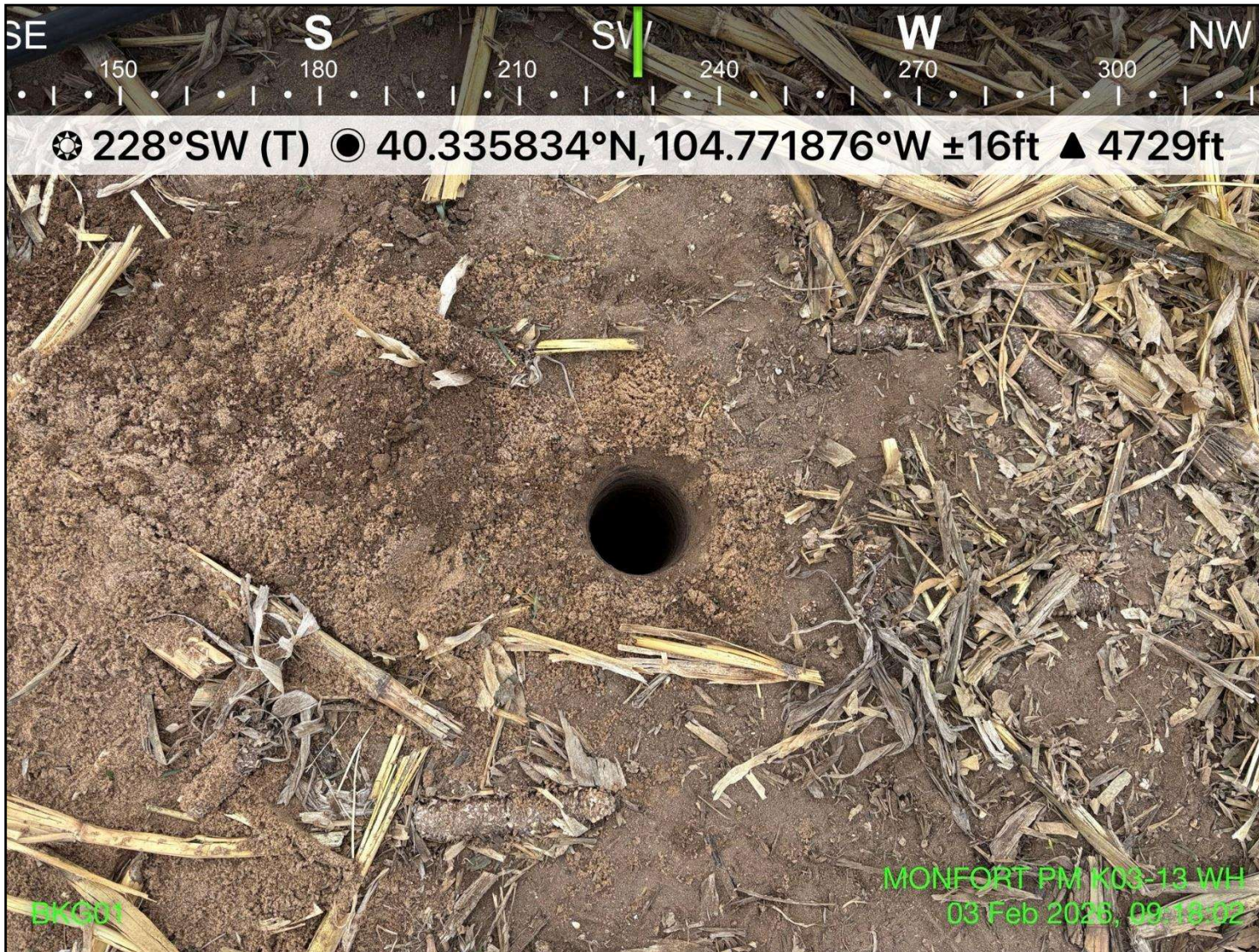
**Photo 3:** View of excavation, facing north

**Photographic Log**  
MONFORT-PM K 3-13 – REM# 42925  
Noble Energy, Inc  
2/3/2026



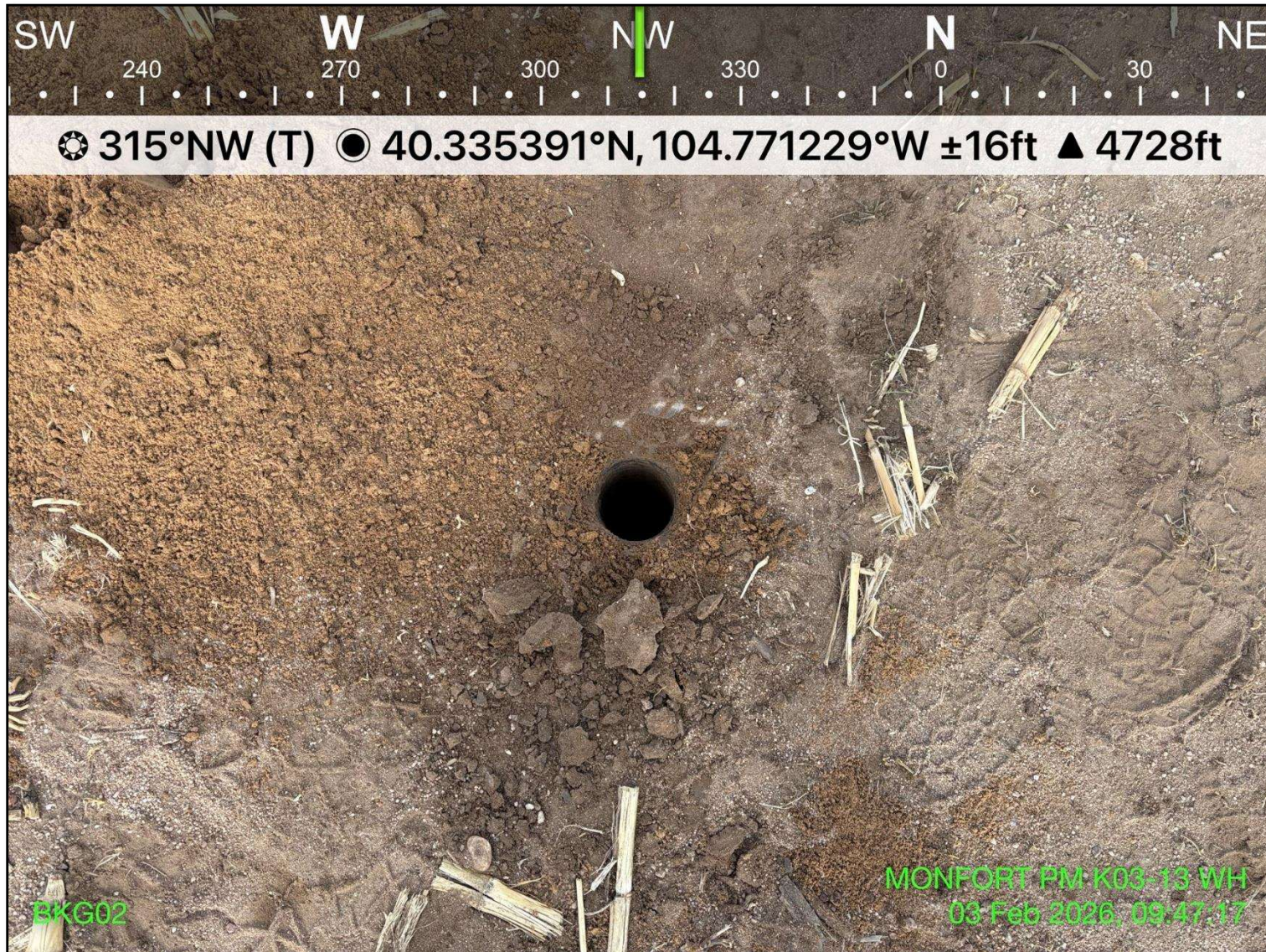
**Photo 4:** View of excavation, facing north-northeast

**Photographic Log**  
MONFORT-PM K 3-13 – REM# 42925  
Noble Energy, Inc  
2/3/2026



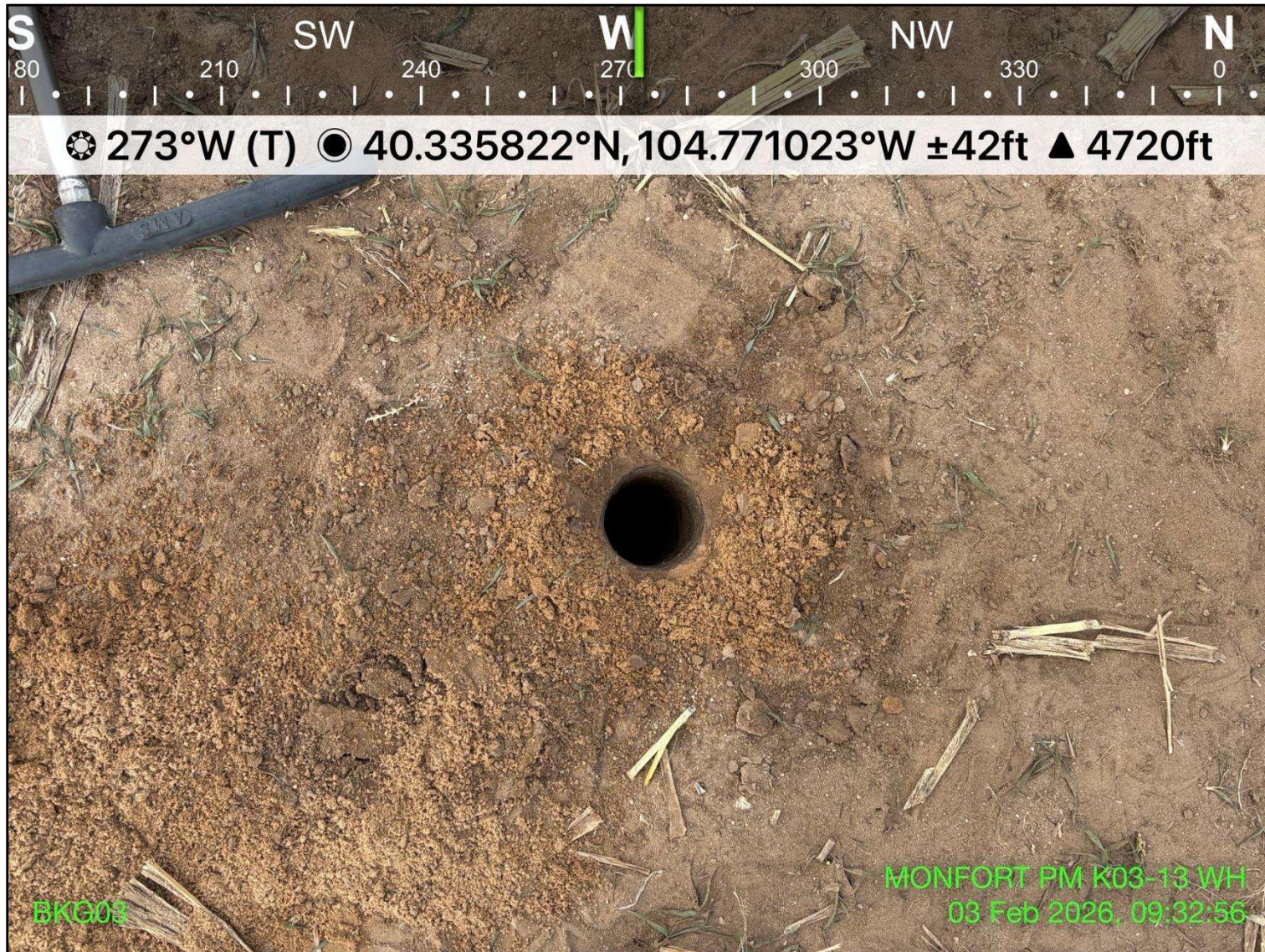
**Photo 5:** View of background location 1, facing southwest

**Photographic Log**  
MONFORT-PM K 3-13 – REM# 42925  
Noble Energy, Inc  
2/3/2026



**Photo 6:** View of background location 2, facing northwest

**Photographic Log**  
MONFORT-PM K 3-13 – REM# 42925  
Noble Energy, Inc  
2/3/2026



**Photo 7:** View of background location 3, facing west



CDH Consulting, LLC  
Thornton, Colorado  
720.431.7468  
[www.CDHConsult.com](http://www.CDHConsult.com)

## **WELLHEAD CLOSURE CHECKLIST**

## Wellhead Closure Checklist

### ECMC Rule 911.a.(4) Environmental Site Closure Assessment Field Form

Additional attachments (optional):		Pit Closure		Tank Battery Closure		Flowline Closure		Partially Buried Vault Closure	
Site Name & ECMC Facility Number: MONFORT-PM K 3-13 / # 246324		Date: 2/3/2026						Remediation Project #: 42925	
Associated Wells: MONFORT-PM K 3-13		Age of Site: 12/20/1988 (Spud date)						Number of Photos Attached: 4	
Location: 40.335740, -104.771410							Estimated Facility Size <sup>(acres)</sup> : ~0.1		
General Condition of Site: Good									
USCS Soil Type: Well-graded Sands (SW)				Estimated Depth to Groundwater: Not encountered					
Hydrocarbon Impacted Soils / Spills: Not encountered									
Salt Crusted Soils or Impacted Vegetation: Not encountered									
Wellhead(s)									
Well API	123-14121								
Age	12/20/1988								
Condition of surface around wellhead	Good, no staining								
PID Readings	0.0 ppm - 0.3 ppm								
Condition of subsurface	Good, no staining								
PID Readings	0.0 ppm - 0.3 ppm								
Sample taken? Location/Sample ID#	WH01@4.5'								
Photo Number(s)	Photos 1 - 5								
Other observations regarding wellheads: None									
Summary									
Was impacted soil identified? <b>No</b> Yes - less than 10 cubic yards      Yes - more than 10 cubic yards									
Total number of samples field screened: 5				Total number of samples collected: 1					
Highest PID Reading: 0.3 ppm				Total number of samples submitted to lab for analysis: 1					
If more than 10 cubic yards of impacted soil were observed:									
Vertical extent:				Estimated spill volume:					
Lateral extent:				Volume of soil removed:					
Is additional investigation required?									
Was groundwater encountered during the investigation? <b>No</b> Yes - not impacted or in contact with impacted soils      Yes - groundwater impacted and/or in contact with impacted soils									
Measured depth to groundwater:				Was remedial groundwater removal conducted?		Yes		No	
Date Groundwater was encountered:				Commencement date of removal:					
Sheen on groundwater?		Yes		No		Volume of groundwater removed prior to sampling:			
Free product observed?		Yes		No		Volume of groundwater removed post sampling:			
Total number of samples collected:				Total Volume of groundwater removed:					
Total number of samples submitted to lab for analysis:									