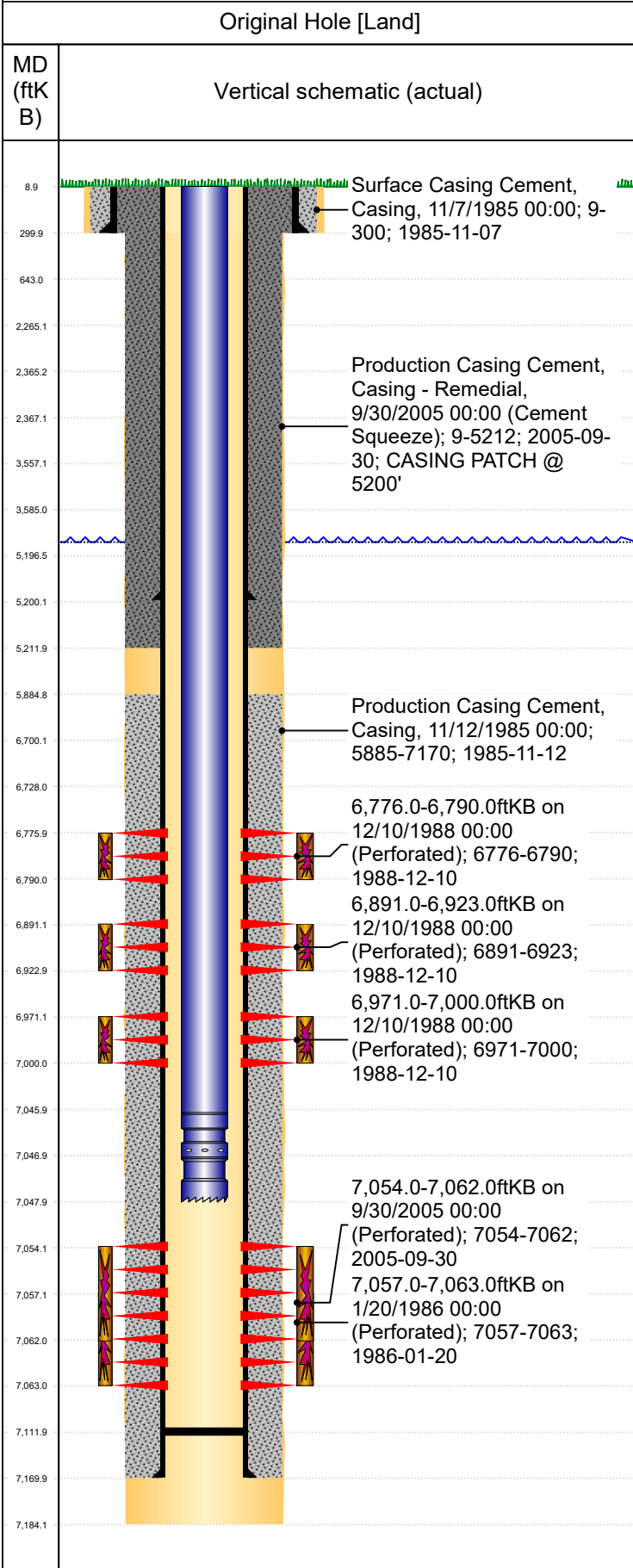




PA Wellbore For State - Vertical

Well Name: Koehler 1



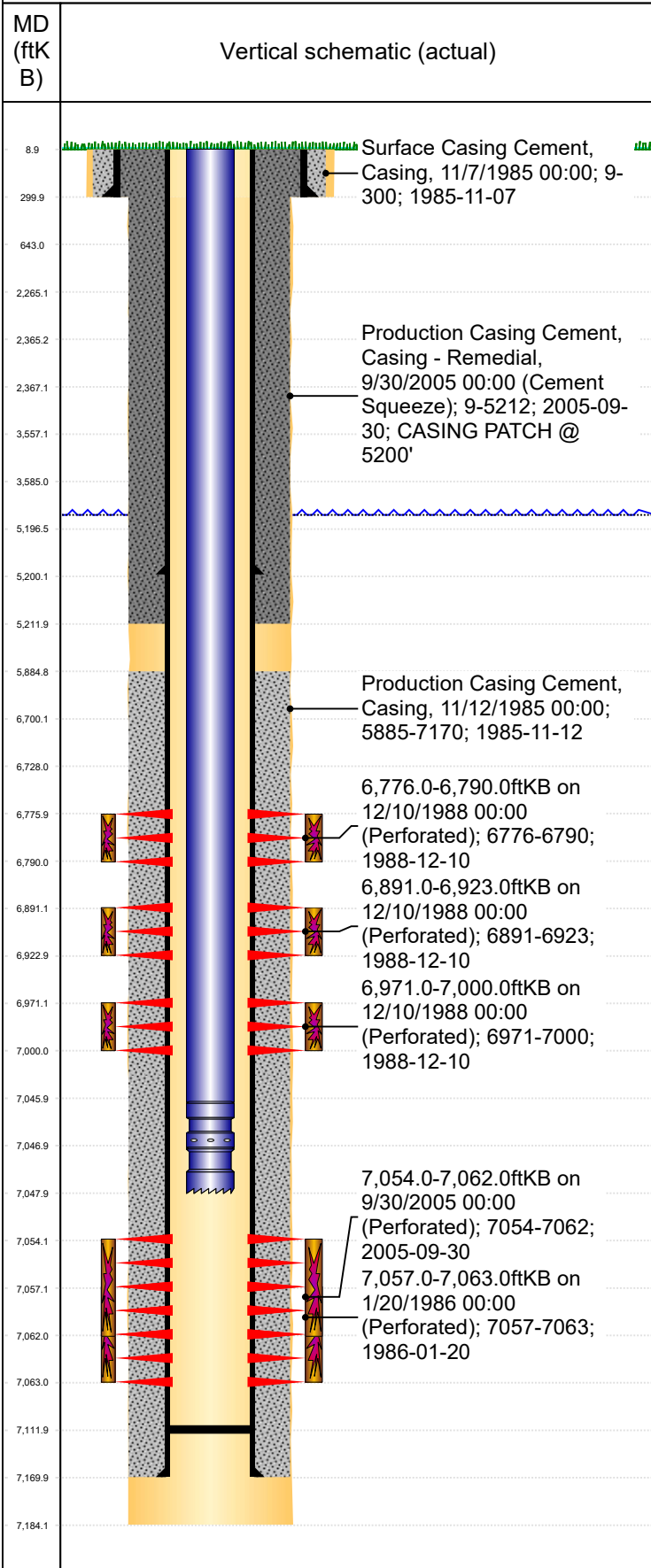
Well Header									
Surface UWI 0512312741		Business Unit Rockies		Gov Auth Dist Evans		Prod Tree Loc Land			
Orig. KB to Gnd (ft) 9.00		Original Spud Date 11/7/1985		Abandon Date		Well Sub-Status PR		High...	
								N	
Comment									
Geologic Horizons									
Formation Name Codell								Final Top MD (ftKB) 7,050.0	
Formation Name Nio A Chalk								Final Top MD (ftKB) 6,771.4	
Formation Name Parkman								Final Top MD (ftKB) 3,633.0	
Formation Name Pierre								Final Top MD (ftKB) 399.5	
Formation Name Pierre (Upper) Aquifer Base								Final Top MD (ftKB) 1,444.7	
Formation Name Pierre (Upper) Aquifer Top								Final Top MD (ftKB) 453.3	
Formation Name Pierre MBR A SD Base								Final Top MD (ftKB) 2,883.4	
Formation Name Pierre MBR A SD Top								Final Top MD (ftKB) 2,704.5	
Formation Name Pierre_TP_B_A								Final Top MD (ftKB) 6,724.1	
Formation Name Sharon Spring Mkr								Final Top MD (ftKB) 6,744.3	
Formation Name A_Sand-Top_Prod								Final Top MD (ftKB) 2,385.0	
Formation Name Foxhills-Base_Prod								Final Top MD (ftKB) 153.0	
Congressional Location									
Quarter 3 NW	Quarter 4 SE	Section 22	Township 6	Twnshp N/...	Range 65	Rng E/W Dir W	Latitude (°) 40.46958	Longitude (°) -104.64689	
Wellbore Sections									
Section Des		Hole Size (in)		Top Depth (ftKB)		Btm Depth (ftKB)			
Surface		12 1/4		9.0		300.0			
Production		7 7/8		300.0		7,184.0			
Casing Strings									
Csg Des		Run Date		OD (in)		Wt/Len (lb/ft)		Grade	
Surface		11/8/1985		9 5/8		36.00		H-40	
Production Casing		9/29/2005		4 1/2		11.60		J-55	
Production		11/12/1985		4 1/2		11.60		N-80	
Cement									
Des				Start Date		Top (ftKB)		Btm (ftKB)	
Surface Casing Cement				11/7/1985		9.0		300.0	
Production Casing Cement				11/12/1985		5,885.0		7,170.0	
Cement Squeeze				9/30/2005		9.0		5,212.0	
Stim/Frac Summary									
Min Top Depth (ftKB) 6,776.0					Max Btm Depth (ftKB) 7,063.0				
Min Top Depth (ftKB) 7,054.0					Max Btm Depth (ftKB) 7,062.0				
Perforations									
Linked Zone Niobrara_A, Original Hole		Date 12/10/1988 00:00		Top Depth (ftKB) 6,776.0		Bottom Depth (ftKB) 6,790.0			
Linked Zone Niobrara_B, Original Hole		Date 12/10/1988 00:00		Top Depth (ftKB) 6,891.0		Bottom Depth (ftKB) 6,923.0			
Linked Zone Niobrara_C, Original Hole		Date 12/10/1988 00:00		Top Depth (ftKB) 6,971.0		Bottom Depth (ftKB) 7,000.0			
Linked Zone Codell, Original Hole		Date 9/30/2005 00:00		Top Depth (ftKB) 7,054.0		Bottom Depth (ftKB) 7,062.0			
Linked Zone Codell, Original Hole		Date 1/20/1986 00:00		Top Depth (ftKB) 7,057.0		Bottom Depth (ftKB) 7,063.0			
Other In Hole									
Run Date		Des		Make		OD (in)		Top (ftKB)	



PA Wellbore For State - Vertical

Well Name: Koehler 1

Original Hole [Land]



Logs			
Date	Type	Depth Top (MD) (ftKB)	Btm (ftKB)
Wellbore Plug Back Total Depths			
Date	Type	Com	PBTD (ftKB)
11/12/1985			7,112