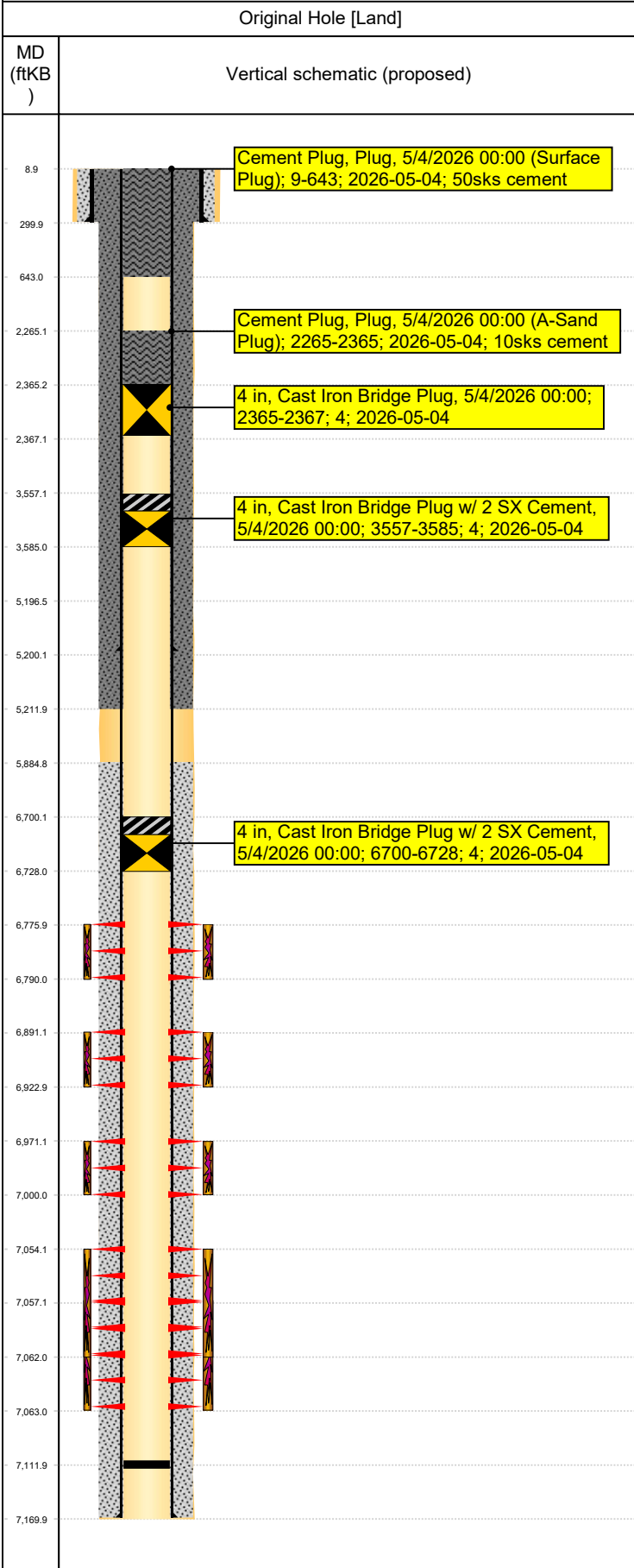




Proposed PA WBD - Vertical

Well Name: Koehler 1



Well Header									
Surface UWI 0512312741		Business Unit Rockies		Gov Auth Dist Evans		Prod Tree Loc Land			
Orig. KB to Gnd (ft) 9.00	Original Spud Date 11/7/1985	Abandon Date		Well Sub-Status PR		High...		N	
Comment									
Geologic Horizons									
Formation Name Codell						Final Top MD (ftKB) 7,050.0			
Formation Name Nio A Chalk						Final Top MD (ftKB) 6,771.4			
Formation Name Parkman						Final Top MD (ftKB) 3,633.0			
Formation Name Pierre						Final Top MD (ftKB) 399.5			
Formation Name Pierre (Upper) Aquifer Base						Final Top MD (ftKB) 1,444.7			
Formation Name Pierre (Upper) Aquifer Top						Final Top MD (ftKB) 453.3			
Formation Name Pierre MBR A SD Base						Final Top MD (ftKB) 2,883.4			
Formation Name Pierre MBR A SD Top						Final Top MD (ftKB) 2,704.5			
Formation Name Pierre_TPB_A						Final Top MD (ftKB) 6,724.1			
Formation Name Sharon Spring Mkr						Final Top MD (ftKB) 6,744.3			
Formation Name A_Sand-Top_Prod						Final Top MD (ftKB) 2,385.0			
Formation Name Foxhills-Base_Prod						Final Top MD (ftKB) 153.0			
Congressional Location									
Quarter 3 NW	Quarter 4 SE	Section 22	Township 6	Twnshp N/...	Range 65	Rng E/W Dir W	Latitude (°) 40.46958	Longitude (°) -104.64689	
Wellbore Sections									
Section Des		Hole Size (in)		Top Depth (ftKB)		Btm Depth (ftKB)			
Surface		12 1/4		9.0		300.0			
Production		7 7/8		300.0		7,184.0			
Casing Strings									
Csg Des		Run Date	OD (in)	Wt/Len (lb/ft)	Grade	Top Depth (MD) (ftKB)	Set Depth (MD) (ftKB)		
Surface		11/8/1985	9 5/8	36.00	H-40	9	300		
Production Casing		9/29/2005	4 1/2	11.60	J-55	9	5200		
Production		11/12/1985	4 1/2	11.60	N-80	9	7170		
Cement									
Des				Start Date	Top (ftKB)	Btm (ftKB)			
Surface Casing Cement				11/7/1985	9.0	300.0			
Production Casing Cement				11/12/1985	5,885.0	7,170.0			
Cement Squeeze				9/30/2005	9.0	5,212.0			
Stim/Frac Summary									
Min Top Depth (ftKB) 6,776.0					Max Btm Depth (ftKB) 7,063.0				
Min Top Depth (ftKB) 7,054.0					Max Btm Depth (ftKB) 7,062.0				
Perforations									
Linked Zone Niobrara_A, Original Hole		Date 12/10/1988 00:00	Top Depth (ftKB) 6,776.0	Bottom Depth (ftKB) 6,790.0					
Linked Zone Niobrara_B, Original Hole		Date 12/10/1988 00:00	Top Depth (ftKB) 6,891.0	Bottom Depth (ftKB) 6,923.0					
Linked Zone Niobrara_C, Original Hole		Date 12/10/1988 00:00	Top Depth (ftKB) 6,971.0	Bottom Depth (ftKB) 7,000.0					
Linked Zone Codell, Original Hole		Date 9/30/2005 00:00	Top Depth (ftKB) 7,054.0	Bottom Depth (ftKB) 7,062.0					
Linked Zone Codell, Original Hole		Date 1/20/1986 00:00	Top Depth (ftKB) 7,057.0	Bottom Depth (ftKB) 7,063.0					
Other In Hole									
Run Date	Des		Make	OD (in)	Top (ftKB)	Btm (ftKB)			

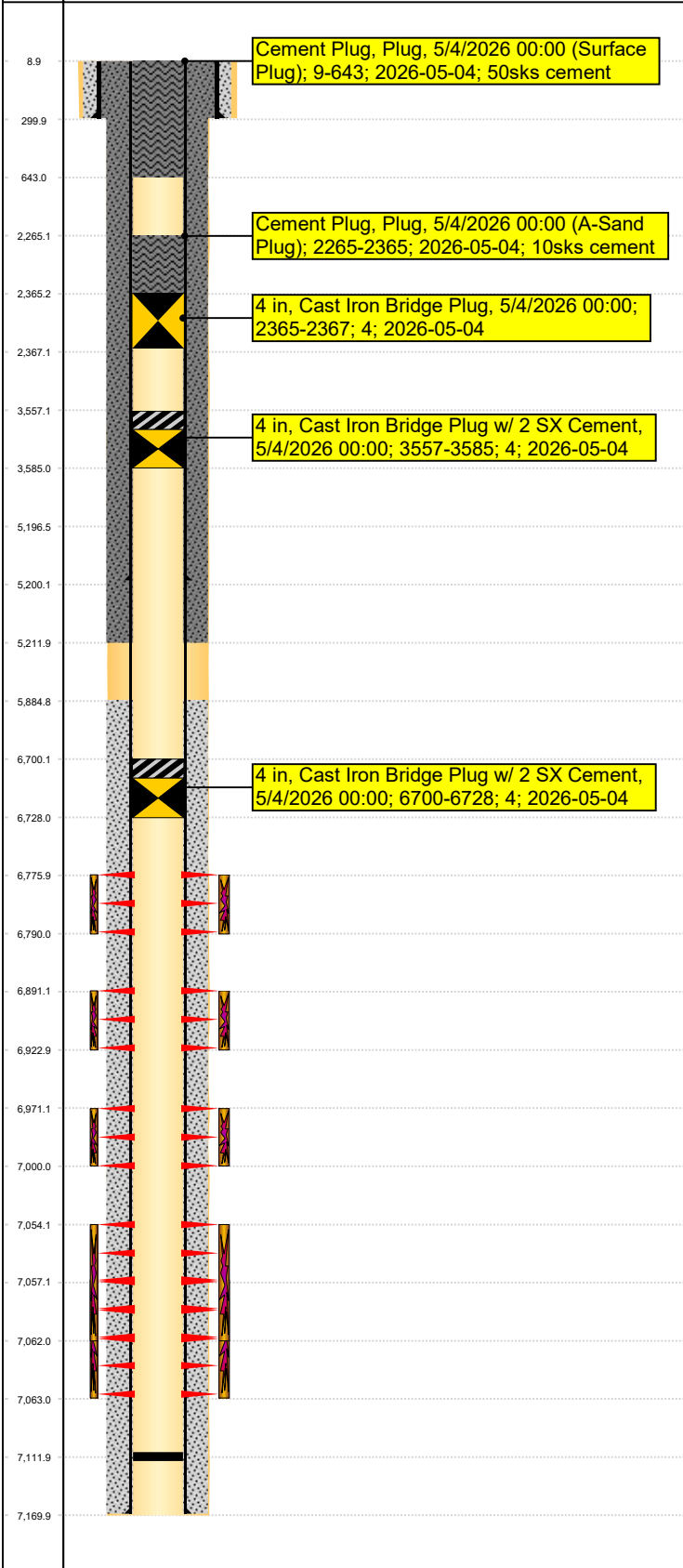


Proposed PA WBD - Vertical

Well Name: Koehler 1

Original Hole [Land]

MD (ftKB)
Vertical schematic (proposed)



Logs

Date	Type	Depth Top (MD) (ftKB)	Btm (ftKB)

Wellbore Plug Back Total Depths

Date	Type	Com	PBTD (ftKB)
11/12/1985			7,112