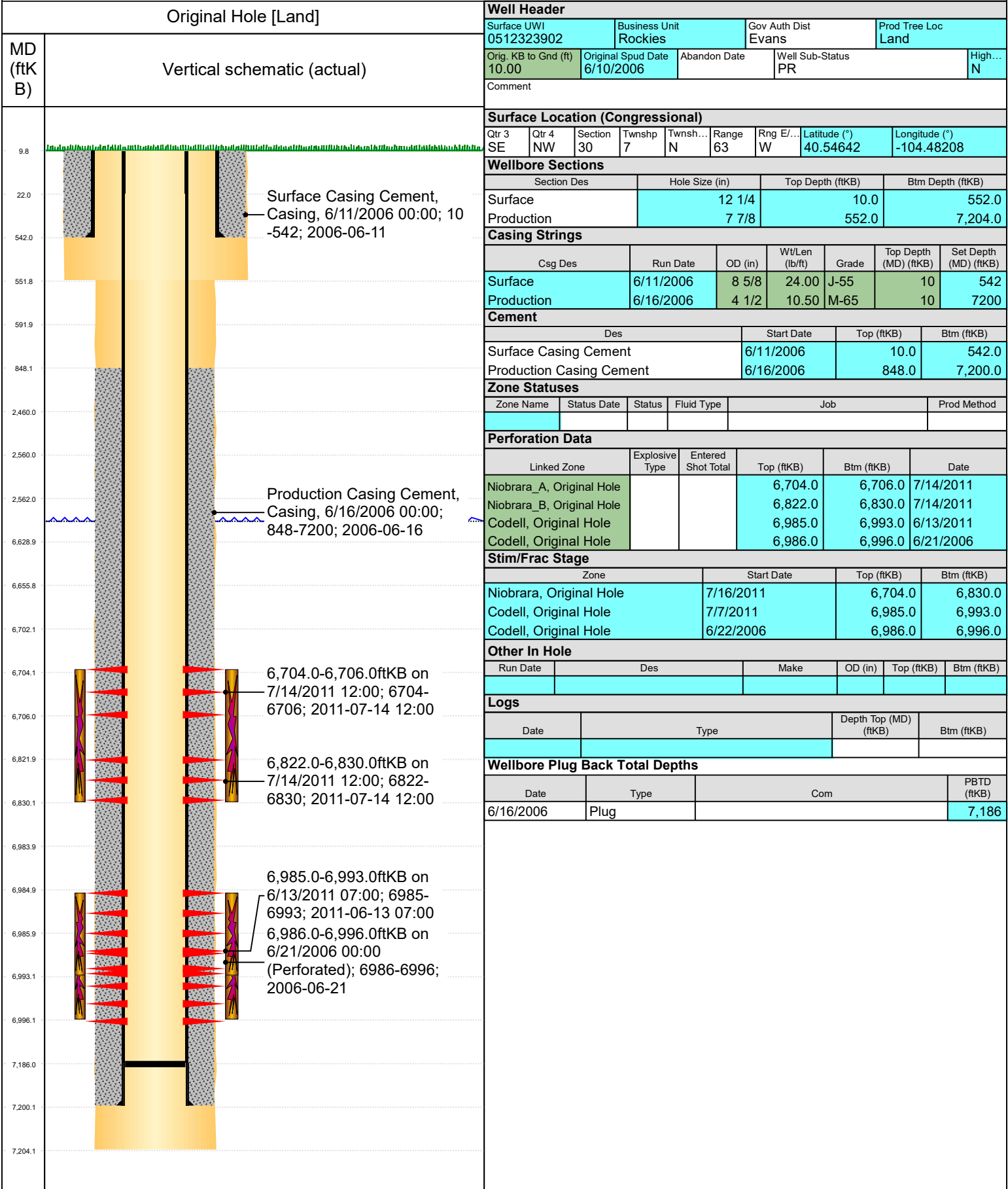




# P&A Wellbore For State

Well Name: Wilson 22-30



Well Header					
Surface UWI	Business Unit		Gov Auth Dist	Prod Tree Loc	
0512323902	Rockies		Evans	Land	
Orig. KB to Gnd (ft)	Original Spud Date	Abandon Date	Well Sub-Status	High...	
10.00	6/10/2006		PR	N	
Comment					

Surface Location (Congressional)								
Qtr 3	Qtr 4	Section	Twonshp	Twonsh...	Range	Rng E...	Latitude (°)	Longitude (°)
SE	NW	30	7	N	63	W	40.54642	-104.48208

Wellbore Sections			
Section Des	Hole Size (in)	Top Depth (ftKB)	Btm Depth (ftKB)
Surface	12 1/4	10.0	552.0
Production	7 7/8	552.0	7,204.0

Casing Strings						
Csg Des	Run Date	OD (in)	Wt/Len (lb/ft)	Grade	Top Depth (MD) (ftKB)	Set Depth (MD) (ftKB)
Surface	6/11/2006	8 5/8	24.00	J-55	10	542
Production	6/16/2006	4 1/2	10.50	M-65	10	7200

Cement			
Des	Start Date	Top (ftKB)	Btm (ftKB)
Surface Casing Cement	6/11/2006	10.0	542.0
Production Casing Cement	6/16/2006	848.0	7,200.0

Zone Statuses					
Zone Name	Status Date	Status	Fluid Type	Job	Prod Method

Perforation Data					
Linked Zone	Explosive Type	Entered Shot Total	Top (ftKB)	Btm (ftKB)	Date
Niobrara_A, Original Hole			6,704.0	6,706.0	7/14/2011
Niobrara_B, Original Hole			6,822.0	6,830.0	7/14/2011
Codell, Original Hole			6,985.0	6,993.0	6/13/2011
Codell, Original Hole			6,986.0	6,996.0	6/21/2006

Stim/Frac Stage			
Zone	Start Date	Top (ftKB)	Btm (ftKB)
Niobrara, Original Hole	7/16/2011	6,704.0	6,830.0
Codell, Original Hole	7/7/2011	6,985.0	6,993.0
Codell, Original Hole	6/22/2006	6,986.0	6,996.0

Other In Hole					
Run Date	Des	Make	OD (in)	Top (ftKB)	Btm (ftKB)

Logs			
Date	Type	Depth Top (MD) (ftKB)	Btm (ftKB)

Wellbore Plug Back Total Depths			
Date	Type	Com	PBTD (ftKB)
6/16/2006	Plug		7,186