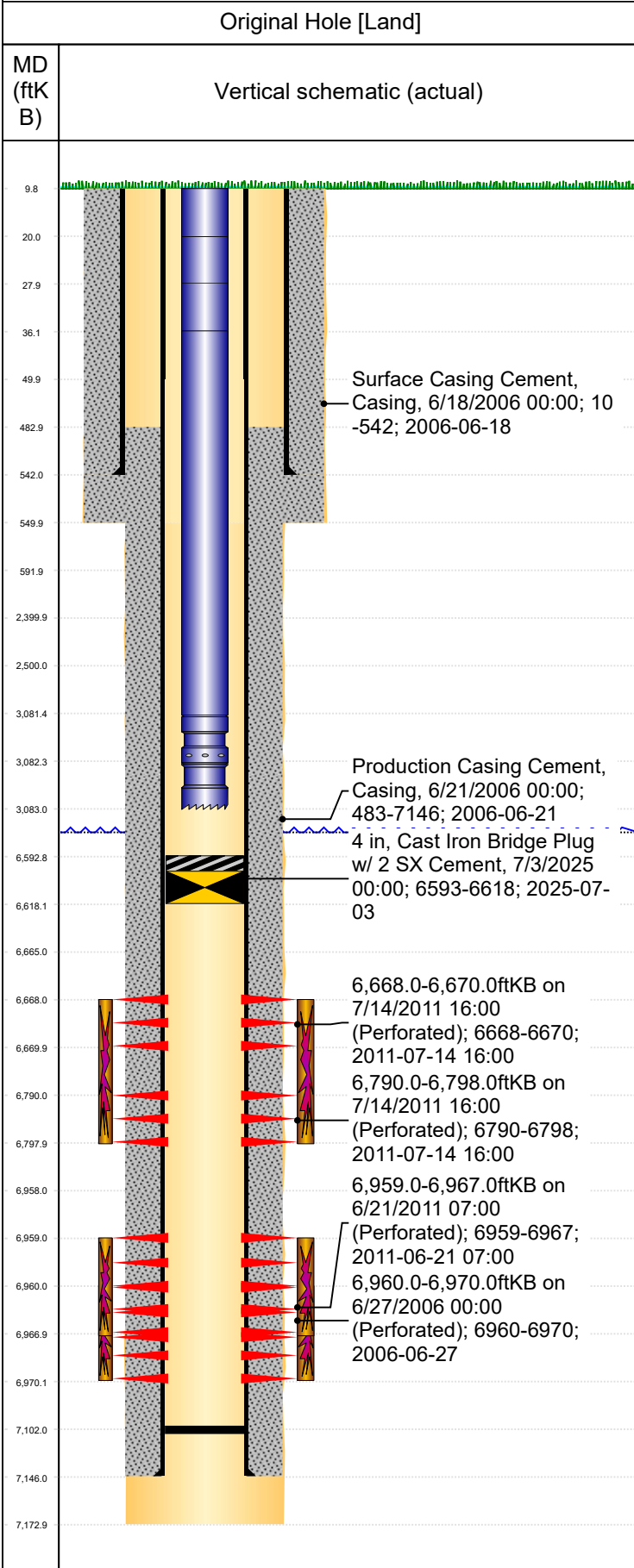




P&A Wellbore For State

Well Name: Wilson 13-30



Well Header									
Surface UWI 0512323925		Business Unit Rockies		Gov Auth Dist Evans		Prod Tree Loc Land			
Orig. KB to Gnd (ft) 10.00		Original Spud Date 6/16/2006		Abandon Date		Well Sub-Status TA		High... N	
Comment									
Surface Location (Congressional)									
Qtr 3 NW	Qtr 4 SW	Section 30	Twonshp 7	Twonsh... N	Range 63	Rng E/... W	Latitude (°) 40.54272	Longitude (°) -104.48658	
Wellbore Sections									
Section Des		Hole Size (in)		Top Depth (ftKB)		Btm Depth (ftKB)			
Surface		12 1/4		10.0		550.0			
Production		7 7/8		550.0		7,173.0			
Casing Strings									
Csg Des		Run Date		OD (in)	Wt/Len (lb/ft)	Grade	Top Depth (MD) (ftKB)	Set Depth (MD) (ftKB)	
Surface		6/18/2006		8 5/8	24.00	J-55	10	542	
Production		6/21/2006		4 1/2	10.50	M-65	10	7146	
Cement									
Des		Start Date		Top (ftKB)		Btm (ftKB)			
Surface Casing Cement		6/18/2006		10.0		542.0			
Production Casing Cement		6/21/2006		483.0		7,146.0			
Zone Statuses									
Zone Name	Status Date	Status	Fluid Type	Job			Prod Method		
Perforation Data									
Linked Zone		Explosive Type	Entered Shot Total	Top (ftKB)	Btm (ftKB)	Date			
Niobrara_A, Original Hole				6,668.0	6,670.0	7/14/2011			
Niobrara_B, Original Hole				6,790.0	6,798.0	7/14/2011			
Codell, Original Hole				6,959.0	6,967.0	6/21/2011			
Codell, Original Hole				6,960.0	6,970.0	6/27/2006			
Stim/Frac Stage									
Zone		Start Date		Top (ftKB)		Btm (ftKB)			
Niobrara, Original Hole		7/16/2011		6,668.0		6,798.0			
Codell, Original Hole		7/7/2011		6,959.0		6,967.0			
Codell, Original Hole		6/28/2006		6,960.0		6,970.0			
Other In Hole									
Run Date		Des		Make		OD (in)	Top (ftKB)	Btm (ftKB)	
7/3/2025		Cast Iron Bridge Plug w/ 2 SX Cement				4	6,593.0	6,618.0	
Logs									
Date		Type				Depth Top (MD) (ftKB)	Btm (ftKB)		
Wellbore Plug Back Total Depths									
Date		Type		Com				PBTD (ftKB)	
6/21/2006								7,102	
6/21/2011								7,102	