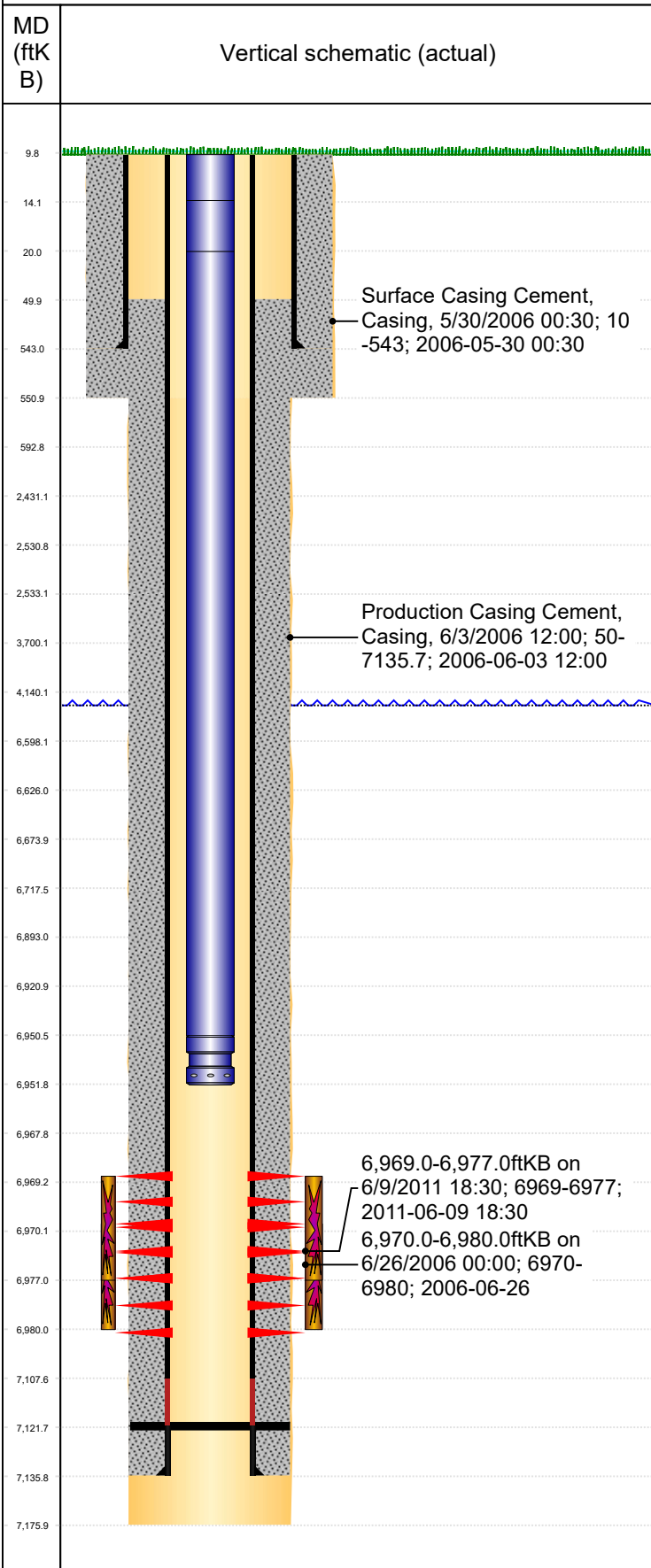




P&A Wellbore For State

Well Name: Wilson 12-30

Original Hole [Land]



Well Header					
Surface UWI	Business Unit		Gov Auth Dist	Prod Tree Loc	
0512323900	Rockies		Evans	Land	
Orig. KB to Gnd (ft)	Original Spud Date	Abandon Date	Well Sub-Status	High...	
10.00	5/29/2006		PR	N	
Comment					

Surface Location (Congressional)								
Qtr 3	Qtr 4	Section	Twnshp	Twnsh...	Range	Rng E/...	Latitude (°)	Longitude (°)
SW	NW	30	7	N	63	W	40.54631	-104.48667

Wellbore Sections			
Section Des	Hole Size (in)	Top Depth (ftKB)	Btm Depth (ftKB)
Surface	12 1/4	10.0	551.0
Production	7 7/8	551.0	7,176.0

Casing Strings						
Csg Des	Run Date	OD (in)	Wt/Len (lb/ft)	Grade	Top Depth (MD) (ftKB)	Set Depth (MD) (ftKB)
Surface	5/29/2006	8 5/8	24.00	J-55	10	543
Production	6/3/2006	4 1/2	11.60	M-65	9.9	7135.7

Cement			
Des	Start Date	Top (ftKB)	Btm (ftKB)
Surface Casing Cement	5/30/2006	10.0	543.0
Production Casing Cement	6/3/2006	50.0	7,135.7

Zone Statuses					
Zone Name	Status Date	Status	Fluid Type	Job	Prod Method

Perforation Data					
Linked Zone	Explosive Type	Entered Shot Total	Top (ftKB)	Btm (ftKB)	Date
Codell, Original Hole			6,969.0	6,977.0	6/9/2011
Codell, Original Hole			6,970.0	6,980.0	6/26/2006

Stim/Frac Stage			
Zone	Start Date	Top (ftKB)	Btm (ftKB)
Codell, Original Hole	7/7/2011	6,969.0	6,977.0
Codell, Original Hole	6/27/2006	6,970.0	6,980.0
Niobrara, Original Hole	7/20/2011		

Other In Hole					
Run Date	Des	Make	OD (in)	Top (ftKB)	Btm (ftKB)

Logs			
Date	Type	Depth Top (MD) (ftKB)	Btm (ftKB)

Wellbore Plug Back Total Depths			
Date	Type	Com	PBTD (ftKB)
6/3/2006			7,122