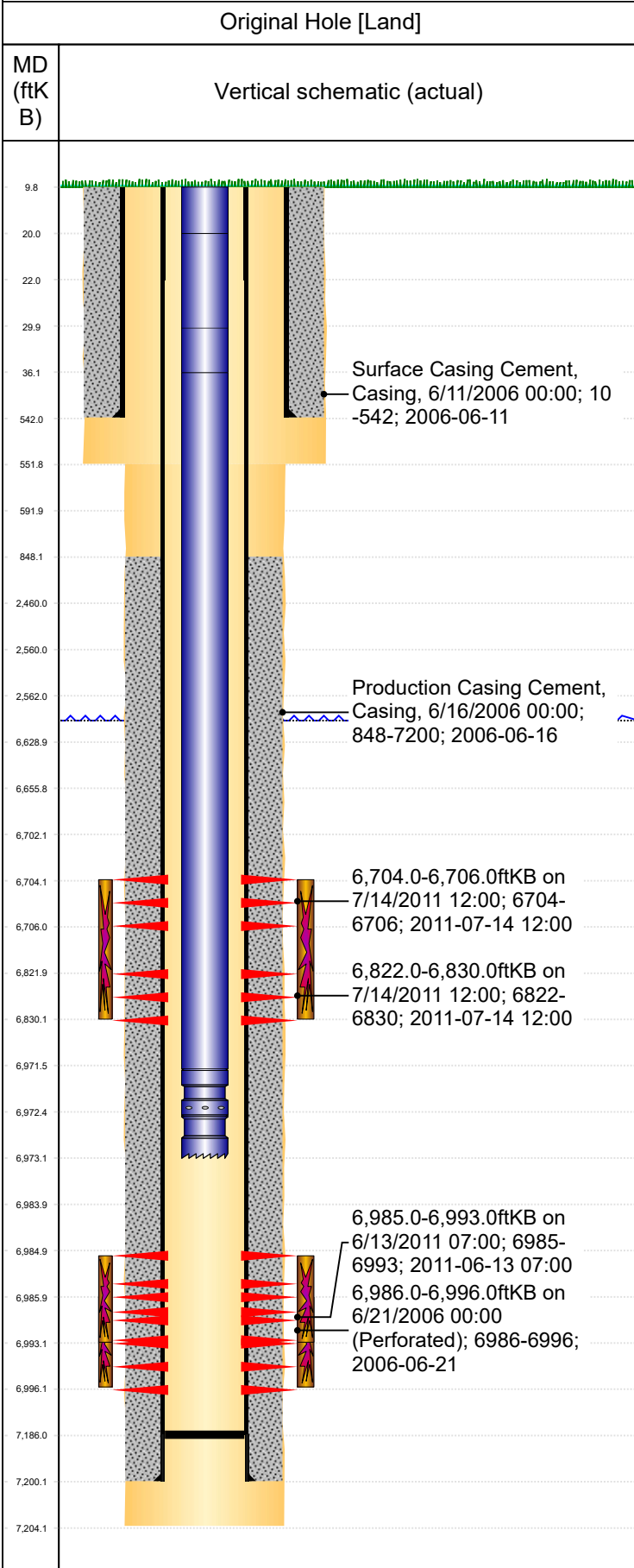




PA Wellbore For State - Vertical

Well Name: Wilson 22-30



Well Header									
Surface UWI 0512323902		Business Unit Rockies		Gov Auth Dist Evans		Prod Tree Loc Land			
Orig. KB to Gnd (ft) 10.00		Original Spud Date 6/10/2006		Abandon Date		Well Sub-Status PR		High...	
								N	
Comment									
Geologic Horizons									
Formation Name Codell								Final Top MD (ftKB) 6,983.8	
Formation Name Nio A Chalk								Final Top MD (ftKB) 6,703.0	
Formation Name Parkman								Final Top MD (ftKB) 3,726.5	
Formation Name Pierre (Upper) Aquifer Base								Final Top MD (ftKB) 1,713.5	
Formation Name Pierre_TP_B_A								Final Top MD (ftKB) 6,656.9	
Formation Name Sharon Spring Mkr								Final Top MD (ftKB) 6,672.0	
Formation Name A_Sand-Top_Prod								Final Top MD (ftKB) 2,580.0	
Congressional Location									
Quarter 3 SE	Quarter 4 NW	Section 30	Township 7	Twnshp N/...	Range 63	Rng E/W Dir W	Latitude (°) 40.54642	Longitude (°) -104.48208	
Wellbore Sections									
Section Des		Hole Size (in)		Top Depth (ftKB)		Btm Depth (ftKB)			
Surface		12 1/4		10.0		552.0			
Production		7 7/8		552.0		7,204.0			
Casing Strings									
Csg Des		Run Date		OD (in)		Wt/Len (lb/ft)		Grade	
Surface		6/11/2006		8 5/8		24.00		J-55	
Production		6/16/2006		4 1/2		10.50		M-65	
						Top Depth (MD) (ftKB)		Set Depth (MD) (ftKB)	
						10		542	
						10		7200	
Cement									
Des				Start Date		Top (ftKB)		Btm (ftKB)	
Surface Casing Cement				6/11/2006		10.0		542.0	
Production Casing Cement				6/16/2006		848.0		7,200.0	
Stim/Frac Summary									
Min Top Depth (ftKB) 6,986.0					Max Btm Depth (ftKB) 6,996.0				
Min Top Depth (ftKB) 6,704.0					Max Btm Depth (ftKB) 6,993.0				
Perforations									
Linked Zone Niobrara_A, Original Hole		Date 7/14/2011 12:00		Top Depth (ftKB) 6,704.0		Bottom Depth (ftKB) 6,706.0			
Linked Zone Niobrara_B, Original Hole		Date 7/14/2011 12:00		Top Depth (ftKB) 6,822.0		Bottom Depth (ftKB) 6,830.0			
Linked Zone Codell, Original Hole		Date 6/13/2011 07:00		Top Depth (ftKB) 6,985.0		Bottom Depth (ftKB) 6,993.0			
Linked Zone Codell, Original Hole		Date 6/21/2006 00:00		Top Depth (ftKB) 6,986.0		Bottom Depth (ftKB) 6,996.0			
Other In Hole									
Run Date		Des		Make		OD (in)		Top (ftKB)	
Logs									
Date		Type				Depth Top (MD) (ftKB)		Btm (ftKB)	
Wellbore Plug Back Total Depths									
Date		Type		Com				PBTD (ftKB)	
6/16/2006		Plug						7,186	