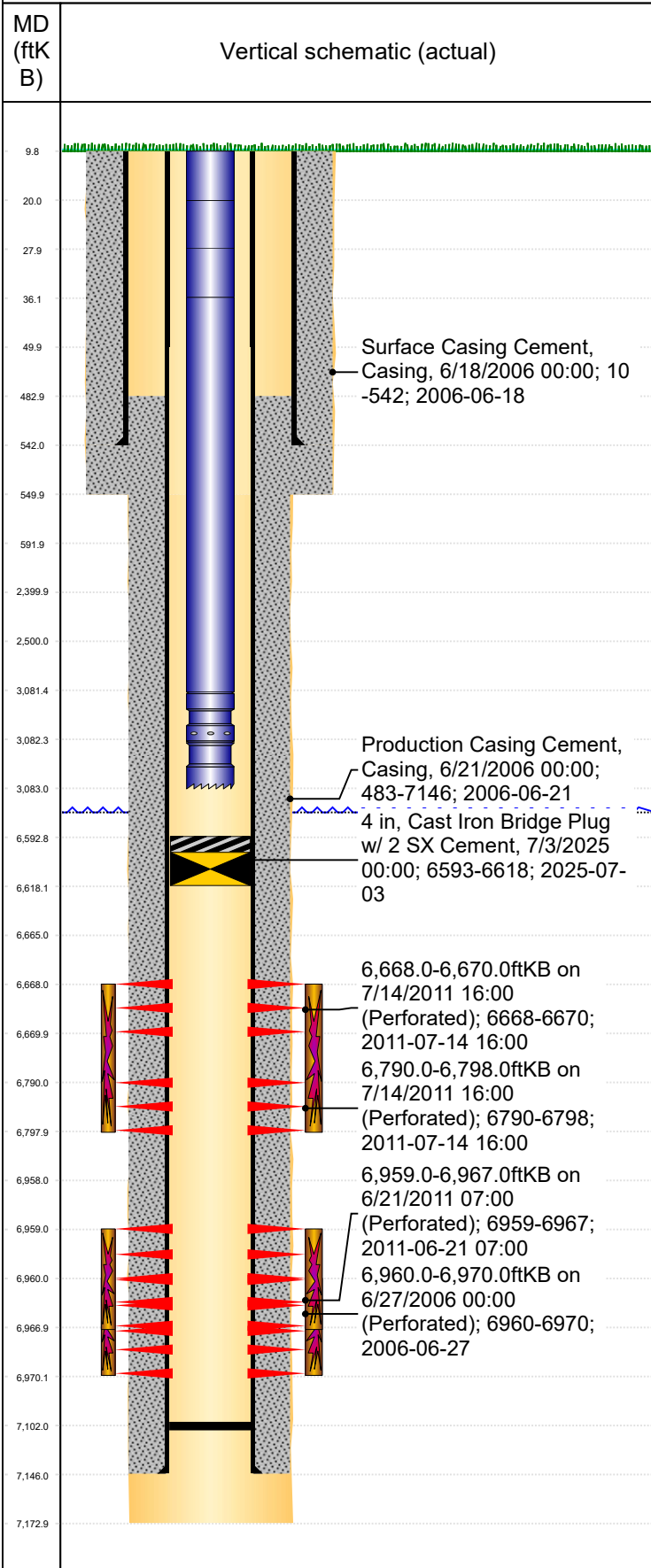




# PA Wellbore For State - Vertical

Well Name: Wilson 13-30

Original Hole [Land]



Well Header				
Surface UWI	Business Unit	Gov Auth Dist	Prod Tree Loc	
0512323925	Rockies	Evans	Land	
Orig. KB to Gnd (ft)	Original Spud Date	Abandon Date	Well Sub-Status	High...
10.00	6/16/2006		TA	N
Comment				

Geologic Horizons	
Formation Name	Final Top MD (ftKB)
Codell	6,958.0
Formation Name	Final Top MD (ftKB)
Nio A Chalk	6,664.0
Formation Name	Final Top MD (ftKB)
Parkman	3,667.9
Formation Name	Final Top MD (ftKB)
Pierre (Upper) Aquifer Base	1,667.9
Formation Name	Final Top MD (ftKB)
Pierre_TP_B_A	6,618.0
Formation Name	Final Top MD (ftKB)
Sharon Spring Mkr	6,635.0

Congressional Location								
Quarter 3	Quarter 4	Section	Township	Twnshp N...	Range	Rng E/W Dir	Latitude (°)	Longitude (°)
NW	SW	30	7	N	63	W	40.54272	-104.48658

Wellbore Sections			
Section Des	Hole Size (in)	Top Depth (ftKB)	Btm Depth (ftKB)
Surface	12 1/4	10.0	550.0
Production	7 7/8	550.0	7,173.0

Casing Strings						
Csg Des	Run Date	OD (in)	Wt/Len (lb/ft)	Grade	Top Depth (MD) (ftKB)	Set Depth (MD) (ftKB)
Surface	6/18/2006	8 5/8	24.00	J-55	10	542
Production	6/21/2006	4 1/2	10.50	M-65	10	7146

Cement			
Des	Start Date	Top (ftKB)	Btm (ftKB)
Surface Casing Cement	6/18/2006	10.0	542.0
Production Casing Cement	6/21/2006	483.0	7,146.0

Stim/Frac Summary	
Min Top Depth (ftKB)	Max Btm Depth (ftKB)
6,960.0	6,970.0
Min Top Depth (ftKB)	Max Btm Depth (ftKB)
6,959.0	6,967.0
Min Top Depth (ftKB)	Max Btm Depth (ftKB)
6,668.0	6,798.0

Perforations			
Linked Zone	Date	Top Depth (ftKB)	Bottom Depth (ftKB)
Niobrara_A, Original Hole	7/14/2011 16:00	6,668.0	6,670.0
Linked Zone	Date	Top Depth (ftKB)	Bottom Depth (ftKB)
Niobrara_B, Original Hole	7/14/2011 16:00	6,790.0	6,798.0
Linked Zone	Date	Top Depth (ftKB)	Bottom Depth (ftKB)
Codell, Original Hole	6/21/2011 07:00	6,959.0	6,967.0
Linked Zone	Date	Top Depth (ftKB)	Bottom Depth (ftKB)
Codell, Original Hole	6/27/2006 00:00	6,960.0	6,970.0

Other In Hole					
Run Date	Des	Make	OD (in)	Top (ftKB)	Btm (ftKB)
7/3/2025	Cast Iron Bridge Plug w/ 2 SX Cement		4	6,593.0	6,618.0

Logs			
Date	Type	Depth Top (MD) (ftKB)	Btm (ftKB)

Wellbore Plug Back Total Depths			
Date	Type	Com	PBTD (ftKB)
6/21/2006			7,102
6/21/2011			7,102