

Inspection Photos

API: 061-06780

Operator: MULL DRILLING COMPANY

Inspection Date: 5/12/2026

County: KIOWA



COLORADO

**Energy & Carbon Management
Commission**

Department of Natural Resources

Inspection Photos



Photo 1. Facing west along the former road which has revegetated.



Inspection Photos

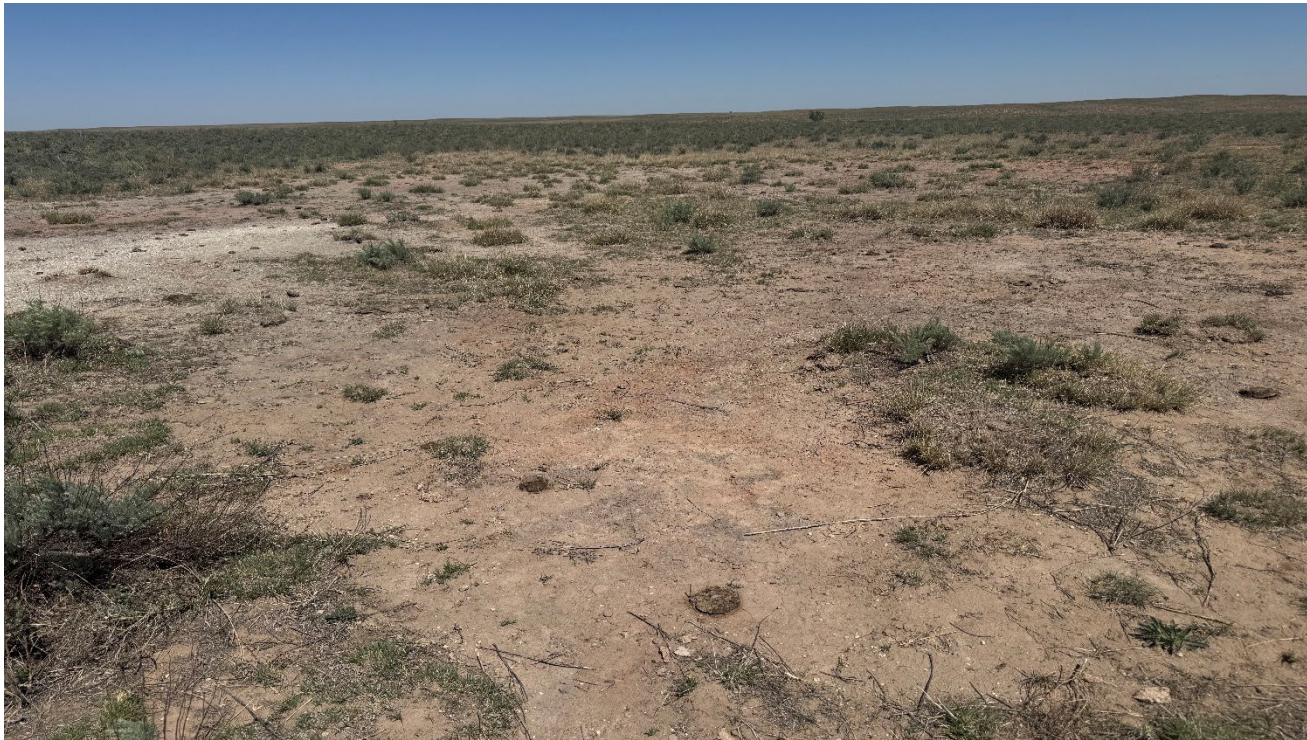


Photo 2. Facing northwest at the location. This area is impacted and soils are discolored. The vegetation is mostly bare in this area. This area is approximately 120'x90'.



Inspection Photos



Photo 3. Facing south at the location. This area is impacted and soils are discolored. The vegetation is mostly bare in this area. This area is approximately 120'x90'.



Inspection Photos



Photo 4. Facing west at the location. This area is impacted and soils are discolored. The vegetation is mostly bare in this area.



Inspection Photos

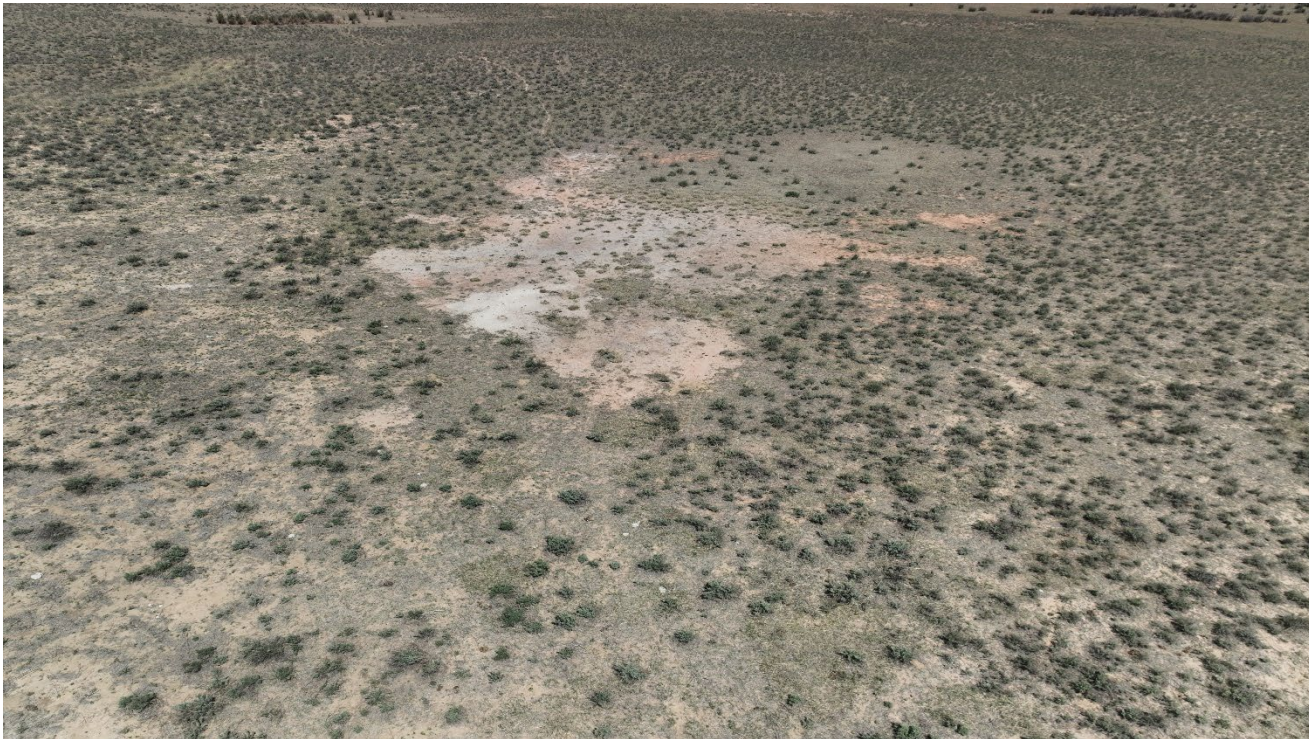


Photo 5. Drone aerial photo facing northwest toward the location.



Inspection Photos

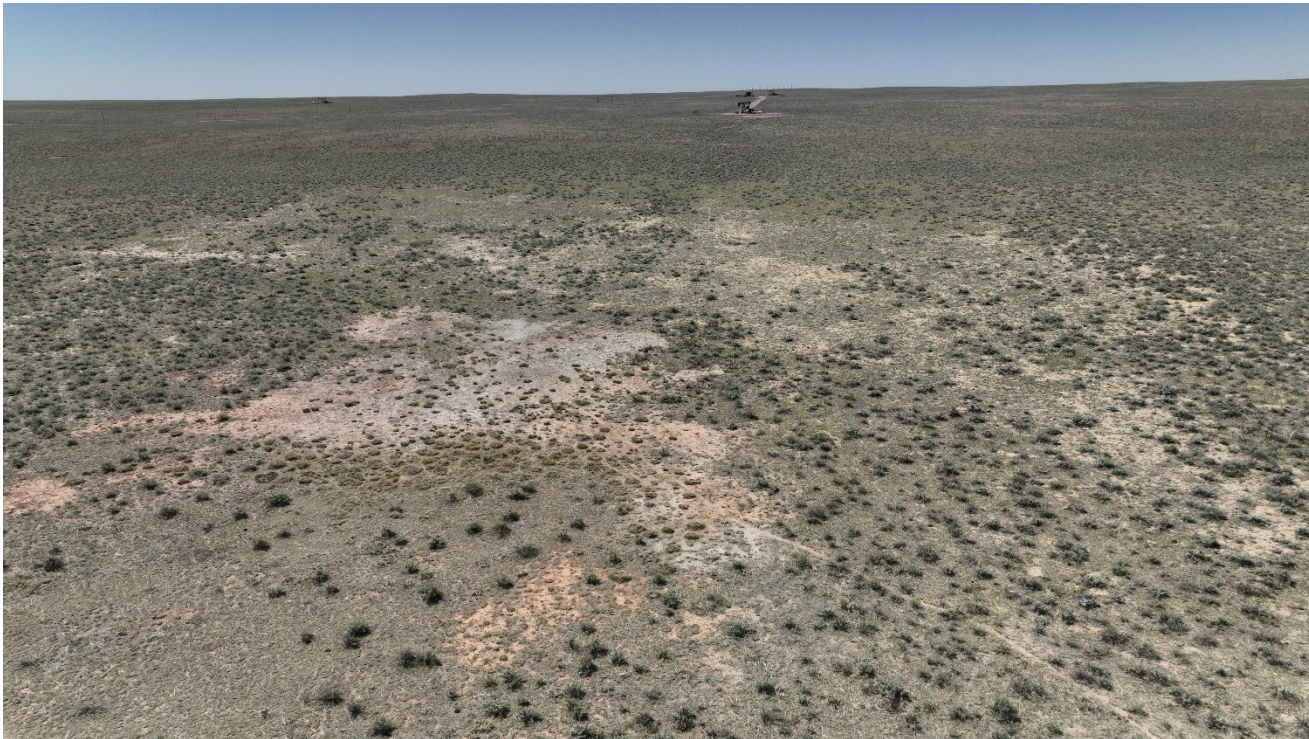


Photo 6. Drone aerial photo facing south.



Inspection Photos

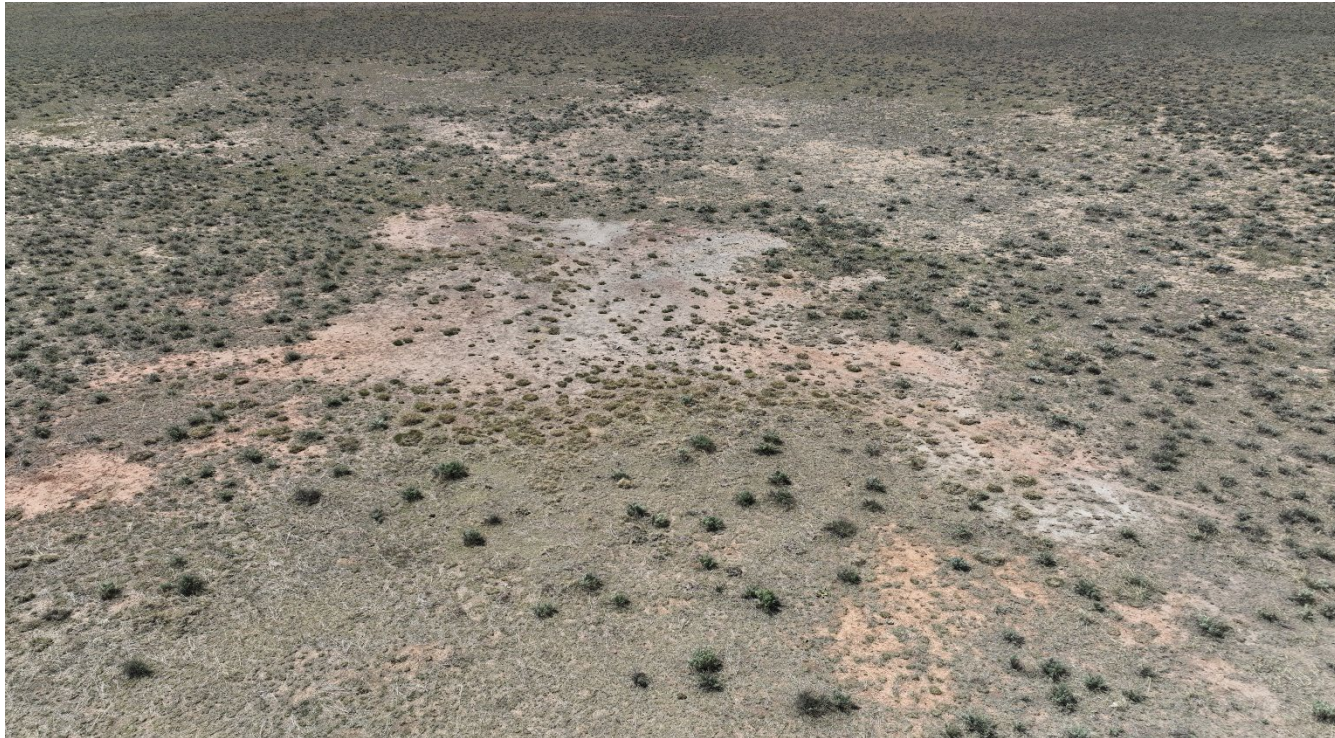


Photo 7. Drone aerial photo facing down south toward the location.



Inspection Photos



Photo 8. Facing north toward the surrounding undisturbed reference area.

