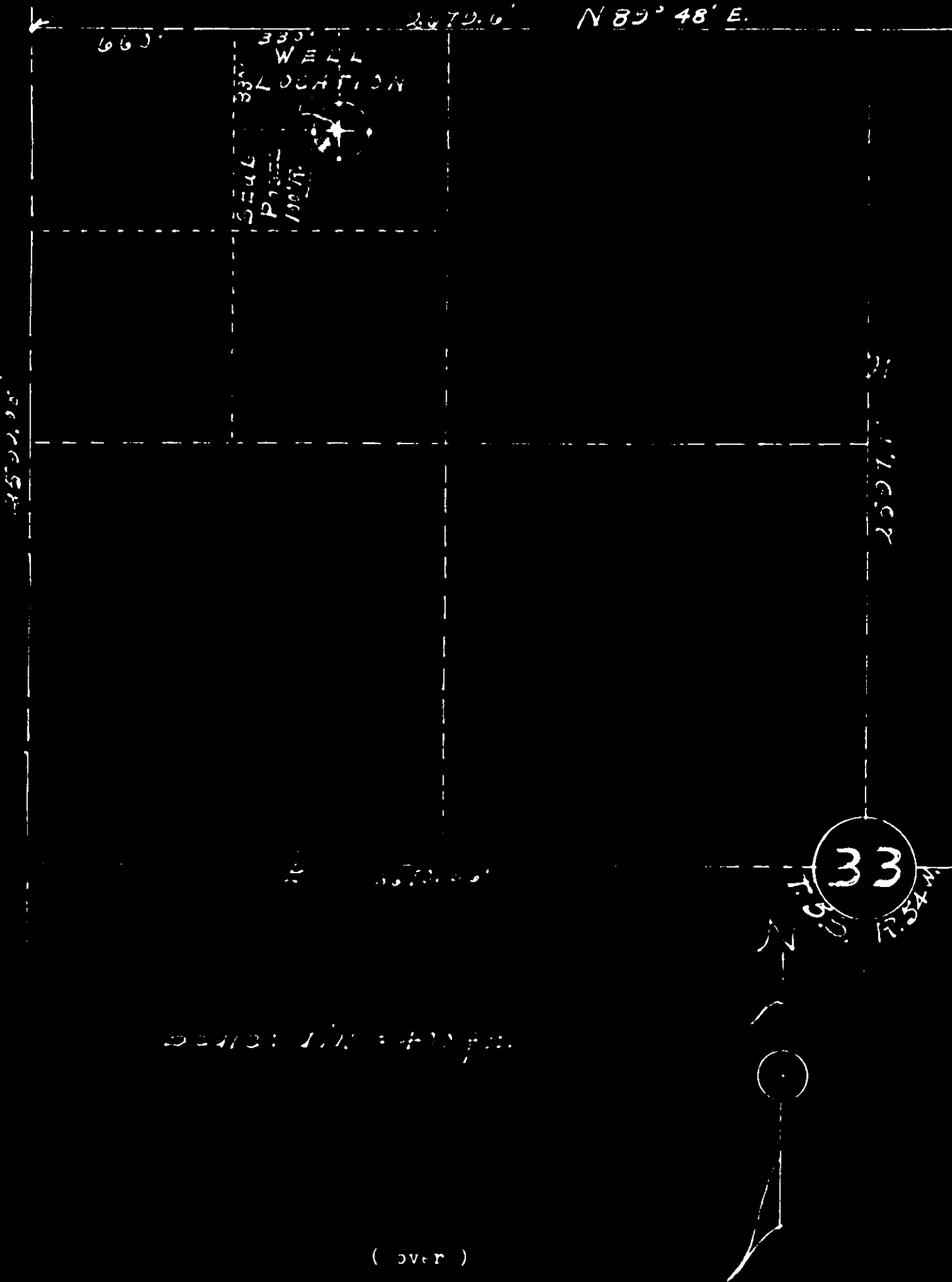




00834502

-PLAT SHOWING LOCATION OF BEAVER
WILD CAT NO. 1.- in the N/E 1/4 - NW 1/4 - NW 1/4
Section 33, Township 5 South, Range 54 West.

2.50 Pipe



Scale: 1" = 400 ft.

(over)

- S U R V E Y O R S C E R T I F I C A T E -

Be it hereby certified that I, E. L. Hickman, Surveyor for the County of Washington, State of Colorado, on the 29th day of September 29, 1928, a survey of a part of Section Thirty-three (Sec. 33), Township Five South, Range Sixty-four West (R. 64 W.) of the 6th. Principal Meridian, Washington County, Colorado, locating the location of Well No. 1 in the N/E 1/4 - N/W 1/4 - N/W 1/4 - Sec. 33.


The survey was conducted as follows, to wit:- From an iron pipe marking the southeast corner of the said Sec. 33, bearing N. 30° - 40' E., in accordance with a plat of the survey made by W. E. Gildertbloom and filed for record in the Office of the District Court, Akron, Colorado on the 24th of Dec. 26, 1919, 15 chains (990 ft.) and set stake, from which point I ran south at right angle 5 chains (330 ft.) and set a 4 ft. post marked "WELL LOCATION - N/E 1/4 - N/W 1/4 - N/W 1/4 - Sec. 33 - T. 5 S. - R. 64 W." as shown on the plat.

The four corners of the compass and on a radius of 100 ft. from the location of the well were set and red flags attached.

The ground surface at this location slopes to the west on a grade of approximately 7% to 8%.

The above plat is an accurate description of this survey and is on a scale of 400 ft. to an inch on which all measurements are given in feet and decimals thereof.

Witness my hand and seal this 29th day of September, 1928.


F. E. Hickman
Washington County Surveyor.

RECEIVED

(over)