

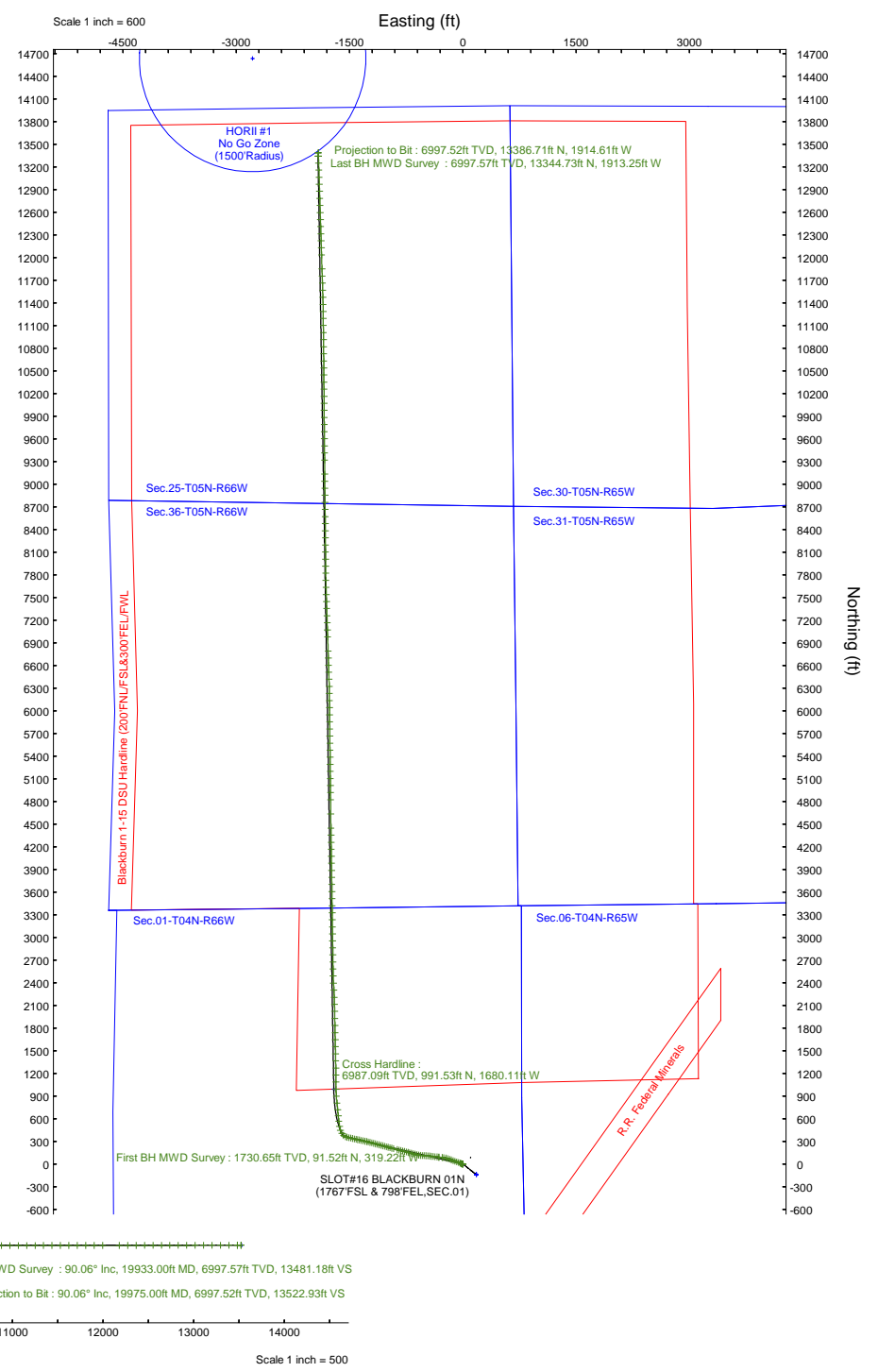
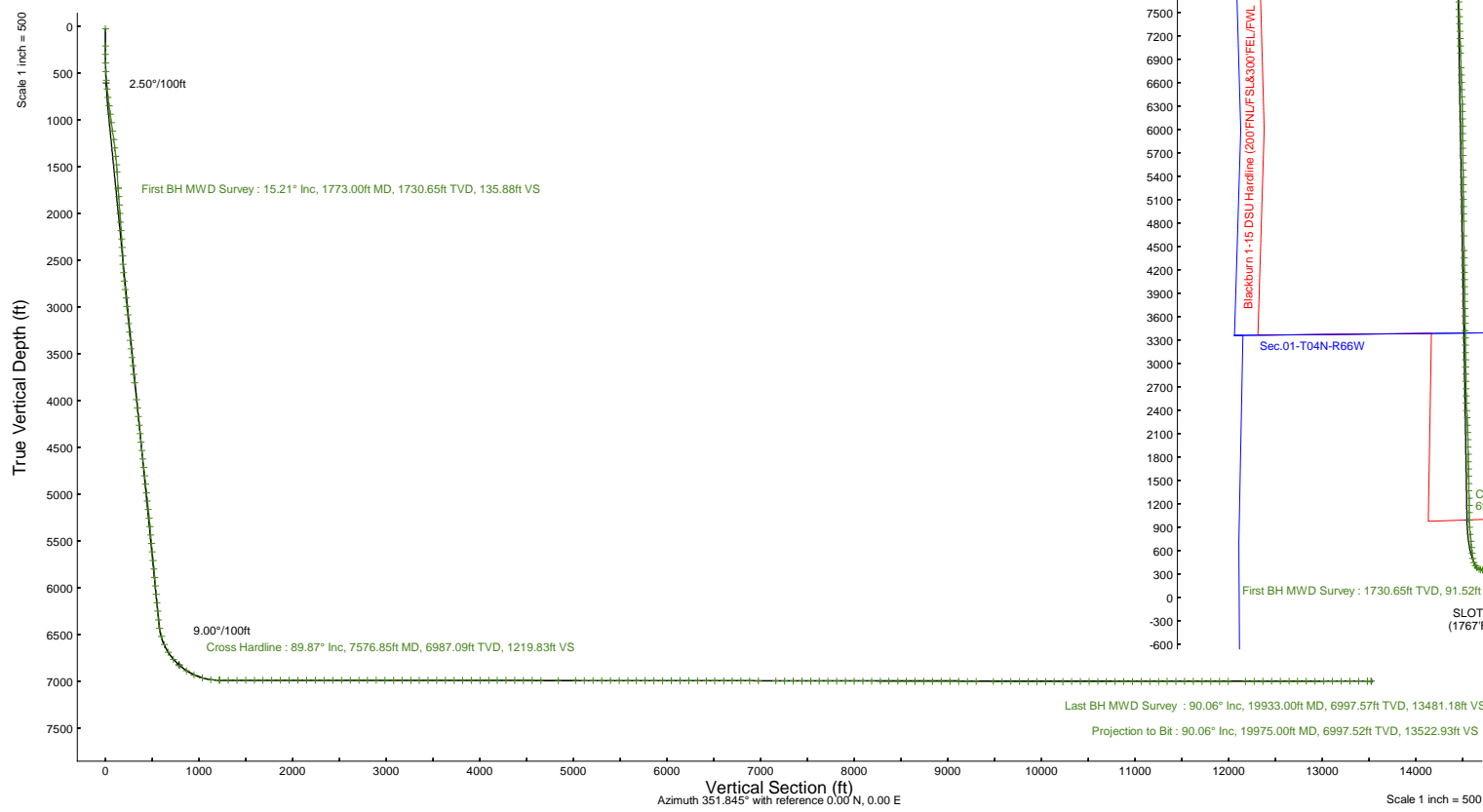
PDC ENERGY INC

Location Information

Facility Name				Grid East (US ft)	Grid North (US ft)	Latitude	Longitude
SEC.01-T04N-R66W				3218050.252	1367194.448	40°20'19.3553N	104°43'4.0112W
Slot	Local N (ft)	Local E (ft)	Grid East (US ft)	Grid North (US ft)	Latitude	Longitude	
SLOT#16 BLACKBURN 01N (1767FSL & 798FEL, SEC.01)	139.47	-176.56	3217873.698	1367333.908	40°20'20.7488N	104°43'6.2753W	
Rig (4697GL+25KB@4722 RKB) (RKB) to Ground level (At Slot: SLOT#16 BLACKBURN 01N (1767FSL & 798FEL, SEC.01))						4722ft	
Mean Sea Level to Ground level (At Slot: SLOT#16 BLACKBURN 01N (1767FSL & 798FEL, SEC.01))						0ft	
Rig (4697GL+25KB@4722 RKB) (RKB) to Mean Sea Level						4722ft	

Area: COLORADO Well: BLACKBURN 01N
 Field: WELD COUNTY (NAD83/GRID) UWI/Legal: 05-123-52754
 Facility: SEC.01-T04N-R66W Wellbore: BLACKBURN 01N PWB
 Slot: SLOT#16 BLACKBURN 01N (1767FSL & 798FEL, SEC.01) Wellpath: BLACKBURN 01N (REV-C.0) PWP

Plot reference wellpath is BLACKBURN 01N (REV-C.0) PWP	Grid System: NAD83 / Lambert Colorado SP, Northern Zone (501), US feet
True vertical depths are referenced to Rig (4697GL+25KB@4722 RKB) (RKB)	North Reference: Grid north
Reference wellpath measured depths are referenced to Rig (4697GL+25KB@4722 RKB) (RKB)	Scale: True distance
Rig (4697GL+25KB@4722 RKB) (RKB) to Mean Sea Level: 4722 feet	Coordinates are in feet referenced to Slot
Mean Sea Level to Ground level (At Slot: SLOT#16 BLACKBURN 01N (1767FSL & 798FEL, SEC.01)): 0 feet	Depths are in feet
Offset wellpath MDs are referenced to each path's default MD datum	Created by: guenier on 2026-04-14; Database: WA_Denver





Actual Wellpath Report

BLACKBURN 01N AWP

Page 1 of 7



REFERENCE WELLPATH IDENTIFICATION			
Operator	PDC ENERGY INC	Well	BLACKBURN 01N
Field	WELD COUNTY (NAD83/GRID)	UWI/Legal	05-123-52754
Facility	SEC.01-T04N-R66W	Wellbore	BLACKBURN 01N AWB
Slot	SLOT#16 BLACKBURN 01N (1767'FSL & 798'FEL,SEC.01)		

REPORT SETUP INFORMATION			
Projection System	NAD83 / Lambert Colorado SP, Northern Zone (501), US feet [2231]	Software System	WellArchitect® 7.0.1
North Reference	Grid	Report Generated By	Guenaler on 2026-04-14 at 2:18:29 PM
Scale	0.999958	Last Updated	2026-04-01
Convergence at slot	0.51° East	Database	WA_Denver

WELLPATH LOCATION						
	Local coordinates		Grid coordinates		Geographic coordinates	
	North[ft]	East[ft]	Easting[US ft]	Northing[US ft]	Latitude	Longitude
Slot Location	139.47	-176.56	3217873.70	1367333.91	40°20'20.7488"N	104°43'6.2753"W
Facility Reference Pt			3218050.25	1367194.45	40°20'19.3553"N	104°43'4.0112"W
Field Reference Pt			3296400.32	1413291.61	40°27'46.8000"N	104°26'5.1000"W

WELLPATH DATUM			
Calculation method	Minimum curvature	Rig (4697'GL+25'KB@4722'RKB) (RKB) to Facility Vertical Datum	4722.00ft
Horizontal Reference Pt	Slot	Rig (4697'GL+25'KB@4722'RKB) (RKB) to Mean Sea Level	4722.00ft
Vertical Reference Pt	Rig (4697'GL+25'KB@4722'RKB) (RKB)	Rig (4697'GL+25'KB@4722'RKB) (RKB) to Ground Level at Slot (SLOT#16 BLACKBURN 01N (1767'FSL & 798'FEL,SEC.01))	4722.00ft
MD Reference Pt	Rig (4697'GL+25'KB@4722'RKB) (RKB)	Section Origin	N 0.00, E 0.00 ft
Field Vertical Reference	Mean Sea Level	Section Azimuth	351.845°



Actual Wellpath Report

BLACKBURN 01N AWP

Page 2 of 7



REFERENCE WELLPATH IDENTIFICATION			
Operator	PDC ENERGY INC	Well	BLACKBURN 01N
Field	WELD COUNTY (NAD83/GRID)	UWI/Legal	05-123-52754
Facility	SEC.01-T04N-R66W	Wellbore	BLACKBURN 01N AWB
Slot	SLOT#16 BLACKBURN 01N (1767'FSL & 798'FEL,SEC.01)		

WELLPATH DATA (209 stations) † = interpolated, ‡ = extrapolated station										
MD [ft]	Inclination [°]	Azimuth [°]	TVD [ft]	Vert Sect [ft]	North [ft]	East [ft]	Latitude	Longitude	DLS [°/100ft]	Comments
0.00†	0.000	282.370	0.00	0.00	0.00	0.00	40°20'20.7488"N	104°43'6.2753"W	0.00	
25.00	0.000	282.370	25.00	0.00	0.00	0.00	40°20'20.7488"N	104°43'6.2753"W	0.00	
209.00	0.790	282.370	208.99	0.44	0.27	-1.24	40°20'20.7516"N	104°43'6.2913"W	0.43	
301.00	1.490	287.990	300.98	1.19	0.78	-3.00	40°20'20.7567"N	104°43'6.3139"W	0.77	
393.00	2.640	282.550	392.91	2.47	1.61	-6.20	40°20'20.7652"N	104°43'6.3552"W	1.27	
485.00	5.540	284.130	484.67	4.90	3.15	-12.58	40°20'20.7810"N	104°43'6.4374"W	3.15	
577.00	9.150	290.630	575.90	10.11	6.81	-23.73	40°20'20.8182"N	104°43'6.5810"W	4.02	
671.00	10.990	293.270	668.45	18.38	12.99	-38.96	40°20'20.8805"N	104°43'6.7769"W	2.02	
765.00	13.540	289.750	760.30	28.21	20.25	-57.55	40°20'20.9539"N	104°43'7.0162"W	2.83	
859.00	16.090	289.580	851.17	39.42	28.33	-80.19	40°20'21.0357"N	104°43'7.3075"W	2.71	
952.00	16.180	288.700	940.50	51.27	36.81	-104.60	40°20'21.1216"N	104°43'7.6219"W	0.28	
1046.00	16.180	289.750	1030.78	63.32	45.43	-129.33	40°20'21.2090"N	104°43'7.9402"W	0.31	
1140.00	15.830	292.390	1121.14	75.96	54.74	-153.51	40°20'21.3031"N	104°43'8.2514"W	0.86	
1233.00	15.480	292.040	1210.69	88.65	64.23	-176.75	40°20'21.3989"N	104°43'8.5504"W	0.39	
1326.00	16.710	285.710	1300.05	100.30	72.51	-201.12	40°20'21.4828"N	104°43'8.8642"W	2.30	
1420.00	16.800	281.840	1390.06	110.42	78.95	-227.43	40°20'21.5488"N	104°43'9.2032"W	1.19	
1514.00	15.210	279.210	1480.41	118.74	83.71	-252.90	40°20'21.5980"N	104°43'9.5315"W	1.86	
1593.00	14.680	275.870	1556.74	124.26	86.40	-273.09	40°20'21.6263"N	104°43'9.7919"W	1.28	
1773.00	15.210	276.790	1730.65	135.88	91.52	-319.22	40°20'21.6809"N	104°43'10.3871"W	0.32	First BH MWD Survey
1866.00	15.210	276.800	1820.40	142.17	94.41	-343.45	40°20'21.7116"N	104°43'10.6996"W	0.00	
1960.00	15.180	276.890	1911.11	148.55	97.34	-367.91	40°20'21.7427"N	104°43'11.0152"W	0.04	
2053.00	15.170	277.000	2000.87	154.89	100.29	-392.08	40°20'21.7739"N	104°43'11.3269"W	0.03	
2147.00	15.100	276.800	2091.61	161.27	103.24	-416.44	40°20'21.8052"N	104°43'11.6412"W	0.09	
2241.00	15.030	277.040	2182.38	167.62	106.18	-440.70	40°20'21.8364"N	104°43'11.9541"W	0.10	
2334.00	14.990	277.260	2272.20	173.98	109.18	-464.59	40°20'21.8681"N	104°43'12.2623"W	0.07	
2427.00	15.210	274.640	2361.99	179.88	111.69	-488.69	40°20'21.8949"N	104°43'12.5731"W	0.77	
2522.00	15.140	270.760	2453.68	184.56	112.86	-513.51	40°20'21.9087"N	104°43'12.8936"W	1.07	
2615.00	15.320	270.740	2543.42	188.34	113.18	-537.94	40°20'21.9139"N	104°43'13.2090"W	0.19	
2708.00	15.370	277.420	2633.11	193.55	114.93	-562.45	40°20'21.9334"N	104°43'13.5253"W	1.90	

WELLPATH DATA (209 stations) † = interpolated, ‡ = extrapolated station

MD [ft]	Inclination [°]	Azimuth [°]	TVD [ft]	Vert Sect [ft]	North [ft]	East [ft]	Latitude	Longitude	DLS [°/100ft]	Comments
2802.00	15.370	284.200	2723.75	201.64	119.59	-586.88	40°20'21.9816"N	104°43'13.8403"W	1.91	
2895.00	14.970	284.010	2813.51	210.86	125.52	-610.48	40°20'22.0423"N	104°43'14.1444"W	0.43	
2989.00	15.370	283.990	2904.24	220.13	131.48	-634.35	40°20'22.1031"N	104°43'14.4519"W	0.43	
3082.00	15.310	284.480	2993.92	229.50	137.52	-658.20	40°20'22.1650"N	104°43'14.7592"W	0.15	
3176.00	15.040	283.670	3084.65	238.81	143.51	-682.06	40°20'22.2262"N	104°43'15.0667"W	0.37	
3270.00	14.010	284.500	3175.64	247.73	149.24	-704.93	40°20'22.2848"N	104°43'15.3613"W	1.12	
3363.00	15.050	284.110	3265.66	256.64	155.00	-727.54	40°20'22.3437"N	104°43'15.6526"W	1.12	
3457.00	14.860	284.090	3356.48	265.83	160.91	-751.07	40°20'22.4041"N	104°43'15.9558"W	0.20	
3551.00	14.710	284.600	3447.37	275.01	166.86	-774.31	40°20'22.4649"N	104°43'16.2552"W	0.21	
3646.00	15.110	284.610	3539.17	284.47	173.02	-797.96	40°20'22.5278"N	104°43'16.5600"W	0.42	
3738.00	15.040	284.290	3628.00	293.66	178.99	-821.13	40°20'22.5889"N	104°43'16.8585"W	0.12	
3832.00	15.450	284.540	3718.70	303.15	185.14	-845.07	40°20'22.6517"N	104°43'17.1669"W	0.44	
3925.00	15.460	284.490	3808.33	312.70	191.36	-869.06	40°20'22.7152"N	104°43'17.4760"W	0.02	
4114.00	15.550	284.960	3990.45	332.35	204.20	-917.93	40°20'22.8463"N	104°43'18.1056"W	0.08	
4207.00	14.690	284.980	4080.23	341.88	210.46	-941.36	40°20'22.9103"N	104°43'18.4075"W	0.92	
4301.00	15.720	284.730	4170.94	351.51	216.78	-965.19	40°20'22.9748"N	104°43'18.7145"W	1.10	
4395.00	15.270	284.320	4261.53	361.19	223.08	-989.50	40°20'23.0391"N	104°43'19.0277"W	0.49	
4489.00	15.450	284.890	4352.17	370.83	229.36	-1013.59	40°20'23.1033"N	104°43'19.3381"W	0.25	
4582.00	15.520	285.650	4441.79	380.70	235.90	-1037.55	40°20'23.1700"N	104°43'19.6467"W	0.23	
4676.00	15.430	284.920	4532.38	390.68	242.51	-1061.74	40°20'23.2374"N	104°43'19.9583"W	0.23	
4769.00	15.200	284.630	4622.08	400.25	248.78	-1085.49	40°20'23.3014"N	104°43'20.2643"W	0.26	
4864.00	15.200	285.740	4713.76	410.11	255.30	-1109.53	40°20'23.3679"N	104°43'20.5740"W	0.31	
4958.00	14.990	283.900	4804.52	419.67	261.57	-1133.19	40°20'23.4319"N	104°43'20.8788"W	0.56	
5051.00	15.340	284.790	4894.28	428.98	267.60	-1156.76	40°20'23.4935"N	104°43'21.1825"W	0.45	
5145.00	15.590	284.680	4984.87	438.73	273.97	-1181.00	40°20'23.5586"N	104°43'21.4948"W	0.27	
5238.00	14.820	284.560	5074.62	448.18	280.13	-1204.60	40°20'23.6215"N	104°43'21.7989"W	0.83	
5331.00	15.330	284.410	5164.42	457.49	286.18	-1228.02	40°20'23.6833"N	104°43'22.1006"W	0.55	
5425.00	15.020	284.260	5255.14	466.90	292.27	-1251.86	40°20'23.7455"N	104°43'22.4078"W	0.33	
5519.00	15.190	282.620	5345.89	475.91	297.96	-1275.68	40°20'23.8038"N	104°43'22.7148"W	0.49	
5613.00	13.490	282.600	5436.96	484.17	303.04	-1298.40	40°20'23.8560"N	104°43'23.0076"W	1.81	
5707.00	15.020	282.140	5528.06	492.28	308.00	-1321.01	40°20'23.9069"N	104°43'23.2990"W	1.63	
5800.00	15.130	282.260	5617.86	500.69	313.11	-1344.65	40°20'23.9595"N	104°43'23.6037"W	0.12	
5894.00	15.210	282.120	5708.59	509.24	318.30	-1368.70	40°20'24.0129"N	104°43'23.9136"W	0.09	
5988.00	14.850	282.530	5799.37	517.77	323.50	-1392.51	40°20'24.0664"N	104°43'24.2206"W	0.40	
6081.00	13.920	282.410	5889.45	525.91	328.49	-1415.07	40°20'24.1176"N	104°43'24.5113"W	1.00	
6174.00	15.060	281.980	5979.49	534.00	333.41	-1437.82	40°20'24.1681"N	104°43'24.8045"W	1.23	



Actual Wellpath Report

BLACKBURN 01N AWP

Page 3 of 7



REFERENCE WELLPATH IDENTIFICATION			
Operator	PDC ENERGY INC	Well	BLACKBURN 01N
Field	WELD COUNTY (NAD83/GRID)	UWI/Legal	05-123-52754
Facility	SEC.01-T04N-R66W	Wellbore	BLACKBURN 01N AWB
Slot	SLOT#16 BLACKBURN 01N (1767'FSL & 798'FEL,SEC.01)		

WELLPATH DATA (209 stations) † = interpolated, ‡ = extrapolated station										
MD [ft]	Inclination [°]	Azimuth [°]	TVD [ft]	Vert Sect [ft]	North [ft]	East [ft]	Latitude	Longitude	DLS [°/100ft]	Comments
6268.00	15.070	282.440	6070.26	542.50	338.57	-1461.69	40°20'24.2212"N	104°43'25.1122"W	0.13	
6362.00	14.930	282.410	6161.06	551.05	343.81	-1485.45	40°20'24.2750"N	104°43'25.4185"W	0.15	
6455.00	15.010	282.810	6250.90	559.57	349.05	-1508.90	40°20'24.3289"N	104°43'25.7206"W	0.14	
6549.00	14.230	283.350	6341.86	568.16	354.42	-1532.01	40°20'24.3839"N	104°43'26.0184"W	0.84	
6642.00	16.770	293.810	6431.49	579.46	362.48	-1555.41	40°20'24.4656"N	104°43'26.3198"W	4.05	
6736.00	20.440	309.630	6520.62	598.81	378.44	-1580.49	40°20'24.6254"N	104°43'26.6417"W	6.61	
6830.00	25.300	328.120	6607.31	629.42	406.01	-1603.78	40°20'24.8999"N	104°43'26.9394"W	9.17	
6924.00	31.790	342.000	6689.93	672.29	446.71	-1622.08	40°20'25.3036"N	104°43'27.1711"W	9.83	
7017.00	40.280	350.620	6765.12	726.62	499.80	-1634.58	40°20'25.8293"N	104°43'27.3266"W	10.61	
7111.00	49.280	354.210	6831.78	792.74	565.36	-1643.14	40°20'26.4779"N	104°43'27.4298"W	9.94	
7203.00	56.500	354.280	6887.25	865.99	638.31	-1650.49	40°20'27.1994"N	104°43'27.5164"W	7.85	
7296.00	65.560	354.400	6932.25	947.19	719.20	-1658.51	40°20'27.9993"N	104°43'27.6108"W	9.74	
7389.00	74.860	354.540	6963.71	1034.51	806.20	-1666.93	40°20'28.8598"N	104°43'27.7097"W	10.00	
7483.00	83.300	355.110	6981.50	1126.60	898.04	-1675.24	40°20'29.7680"N	104°43'27.8066"W	9.00	
7576.85†	89.869	358.914	6987.09	1219.83	991.53	-1680.11	40°20'30.6922"N	104°43'27.8589"W	8.08	Cross Hardline
7577.00	89.880	358.920	6987.09	1219.98	991.68	-1680.11	40°20'30.6937"N	104°43'27.8590"W	8.08	
7671.00	89.910	359.920	6987.26	1313.16	1085.67	-1681.06	40°20'31.6226"N	104°43'27.8606"W	1.06	
7765.00	89.850	359.820	6987.46	1406.24	1179.67	-1681.27	40°20'32.5514"N	104°43'27.8528"W	0.12	
7858.00	89.940	358.740	6987.63	1498.46	1272.66	-1682.44	40°20'33.4704"N	104°43'27.8574"W	1.17	
7952.00	90.000	358.760	6987.68	1591.78	1366.64	-1684.49	40°20'34.3992"N	104°43'27.8732"W	0.07	
8045.00	90.060	358.840	6987.63	1684.09	1459.62	-1686.44	40°20'35.3181"N	104°43'27.8879"W	0.11	
8139.00	90.030	358.730	6987.55	1777.40	1553.60	-1688.43	40°20'36.2469"N	104°43'27.9030"W	0.12	
8232.00	90.000	358.670	6987.53	1869.74	1646.57	-1690.54	40°20'37.1659"N	104°43'27.9197"W	0.07	
8325.00	90.060	358.890	6987.48	1962.06	1739.55	-1692.52	40°20'38.0848"N	104°43'27.9348"W	0.25	
8420.00	89.880	358.740	6987.53	2056.35	1834.53	-1694.49	40°20'39.0235"N	104°43'27.9495"W	0.25	
8513.00	90.060	358.980	6987.58	2148.66	1927.51	-1696.34	40°20'39.9424"N	104°43'27.9628"W	0.32	
8607.00	90.090	358.900	6987.46	2241.94	2021.50	-1698.08	40°20'40.8713"N	104°43'27.9747"W	0.09	
8701.00	89.910	358.190	6987.46	2335.30	2115.47	-1700.46	40°20'41.8000"N	104°43'27.9949"W	0.78	
8794.00	89.850	358.630	6987.65	2427.69	2208.43	-1703.05	40°20'42.7188"N	104°43'28.0177"W	0.48	

WELLPATH DATA (209 stations) † = interpolated, ‡ = extrapolated station

MD [ft]	Inclination [°]	Azimuth [°]	TVD [ft]	Vert Sect [ft]	North [ft]	East [ft]	Latitude	Longitude	DLS [°/100ft]	Comments
8888.00	89.850	355.880	6987.90	2521.26	2302.31	-1707.55	40°20'43.6469"N	104°43'28.0652"W	2.93	
8982.00	89.880	356.410	6988.12	2614.99	2396.10	-1713.87	40°20'44.5742"N	104°43'28.1363"W	0.56	
9076.00	89.910	358.980	6988.29	2708.49	2490.02	-1717.65	40°20'45.5025"N	104°43'28.1745"W	2.73	
9169.00	89.910	359.250	6988.44	2800.75	2583.00	-1719.08	40°20'46.4215"N	104°43'28.1825"W	0.29	
9262.00	89.750	359.020	6988.71	2892.99	2675.99	-1720.49	40°20'47.3405"N	104°43'28.1902"W	0.30	
9355.00	89.820	359.150	6989.06	2985.25	2768.98	-1721.97	40°20'48.2595"N	104°43'28.1988"W	0.16	
9448.00	89.970	359.080	6989.23	3077.50	2861.97	-1723.41	40°20'49.1784"N	104°43'28.2069"W	0.18	
9540.00	89.940	359.040	6989.30	3168.78	2953.96	-1724.92	40°20'50.0875"N	104°43'28.2160"W	0.05	
9633.00	89.970	359.140	6989.38	3261.03	3046.95	-1726.39	40°20'51.0065"N	104°43'28.2246"W	0.11	
9726.00	89.910	359.100	6989.47	3353.28	3139.93	-1727.82	40°20'51.9255"N	104°43'28.2325"W	0.08	
9820.00	90.090	359.230	6989.47	3446.52	3233.92	-1729.19	40°20'52.8544"N	104°43'28.2396"W	0.24	
9913.00	90.120	359.380	6989.30	3538.73	3326.92	-1730.32	40°20'53.7734"N	104°43'28.2436"W	0.16	
10006.00	89.970	359.220	6989.23	3630.94	3419.91	-1731.46	40°20'54.6923"N	104°43'28.2478"W	0.24	
10101.00	89.940	359.200	6989.31	3725.16	3514.90	-1732.77	40°20'55.6311"N	104°43'28.2540"W	0.04	
10194.00	89.940	359.210	6989.40	3817.39	3607.89	-1734.06	40°20'56.5501"N	104°43'28.2602"W	0.01	
10287.00	89.940	359.230	6989.50	3909.62	3700.88	-1735.32	40°20'57.4691"N	104°43'28.2660"W	0.02	
10381.00	89.970	359.150	6989.57	4002.85	3794.87	-1736.65	40°20'58.3979"N	104°43'28.2726"W	0.09	
10474.00	89.850	358.980	6989.72	4095.12	3887.86	-1738.17	40°20'59.3169"N	104°43'28.2817"W	0.22	
10567.00	89.850	359.000	6989.96	4187.39	3980.85	-1739.81	40°21'0.2359"N	104°43'28.2923"W	0.02	
10661.00	89.970	359.110	6990.11	4280.65	4074.83	-1741.36	40°21'1.1647"N	104°43'28.3017"W	0.17	
10754.00	89.940	359.150	6990.18	4372.90	4167.82	-1742.77	40°21'2.0837"N	104°43'28.3095"W	0.05	
10847.00	89.970	359.170	6990.26	4465.14	4260.81	-1744.14	40°21'3.0027"N	104°43'28.3166"W	0.04	
10941.00	89.850	359.160	6990.40	4558.38	4354.80	-1745.50	40°21'3.9316"N	104°43'28.3237"W	0.13	
11035.00	89.850	359.150	6990.65	4651.61	4448.79	-1746.89	40°21'4.8604"N	104°43'28.3309"W	0.01	
11223.00	89.910	359.260	6991.04	4838.06	4636.77	-1749.50	40°21'6.7182"N	104°43'28.3434"W	0.07	
11410.00	89.880	359.390	6991.39	5023.47	4823.76	-1751.70	40°21'8.5660"N	104°43'28.3507"W	0.07	
11504.00	89.880	359.310	6991.58	5116.66	4917.75	-1752.77	40°21'9.4949"N	104°43'28.3539"W	0.09	
11598.00	89.970	359.330	6991.71	5209.87	5011.75	-1753.88	40°21'10.4238"N	104°43'28.3577"W	0.10	
11690.00	89.940	359.230	6991.78	5301.09	5103.74	-1755.04	40°21'11.3329"N	104°43'28.3622"W	0.11	
11785.00	89.910	359.310	6991.90	5395.29	5198.73	-1756.25	40°21'12.2716"N	104°43'28.3671"W	0.09	
11879.00	89.820	359.350	6992.13	5488.49	5292.73	-1757.35	40°21'13.2005"N	104°43'28.3707"W	0.10	
11973.00	89.880	359.350	6992.37	5581.69	5386.72	-1758.42	40°21'14.1294"N	104°43'28.3739"W	0.06	
12066.00	90.030	359.300	6992.44	5673.90	5479.71	-1759.51	40°21'15.0484"N	104°43'28.3775"W	0.17	
12159.00	89.910	359.190	6992.49	5766.12	5572.70	-1760.74	40°21'15.9674"N	104°43'28.3828"W	0.18	
12253.00	89.880	359.210	6992.67	5859.35	5666.70	-1762.05	40°21'16.8962"N	104°43'28.3892"W	0.04	
12347.00	89.820	359.320	6992.91	5952.56	5760.69	-1763.26	40°21'17.8251"N	104°43'28.3941"W	0.13	



Actual Wellpath Report

BLACKBURN 01N AWP

Page 4 of 7



REFERENCE WELLPATH IDENTIFICATION			
Operator	PDC ENERGY INC	Well	BLACKBURN 01N
Field	WELD COUNTY (NAD83/GRID)	UWI/Legal	05-123-52754
Facility	SEC.01-T04N-R66W	Wellbore	BLACKBURN 01N AWB
Slot	SLOT#16 BLACKBURN 01N (1767'FSL & 798'FEL,SEC.01)		

WELLPATH DATA (209 stations)										
MD [ft]	Inclination [°]	Azimuth [°]	TVD [ft]	Vert Sect [ft]	North [ft]	East [ft]	Latitude	Longitude	DLS [°/100ft]	Comments
12441.00	89.880	359.340	6993.16	6045.76	5854.68	-1764.36	40°21'18.7540"N	104°43'28.3977"W	0.07	
12535.00	89.780	359.460	6993.44	6138.94	5948.67	-1765.34	40°21'19.6829"N	104°43'28.3998"W	0.17	
12629.00	89.780	359.220	6993.80	6232.14	6042.67	-1766.42	40°21'20.6117"N	104°43'28.4032"W	0.26	
12722.00	89.940	359.130	6994.02	6324.38	6135.66	-1767.76	40°21'21.5307"N	104°43'28.4100"W	0.20	
12816.00	89.820	359.230	6994.22	6417.61	6229.65	-1769.11	40°21'22.4596"N	104°43'28.4167"W	0.17	
12909.00	90.370	359.050	6994.07	6509.86	6322.64	-1770.50	40°21'23.3785"N	104°43'28.4242"W	0.62	
13004.00	89.850	358.190	6993.88	6604.19	6417.61	-1772.79	40°21'24.3172"N	104°43'28.4431"W	1.06	
13097.00	89.880	357.680	6994.10	6696.66	6510.55	-1776.14	40°21'25.2358"N	104°43'28.4759"W	0.55	
13191.00	89.850	358.190	6994.33	6790.13	6604.49	-1779.53	40°21'26.1644"N	104°43'28.5090"W	0.54	
13284.00	89.820	358.980	6994.59	6882.49	6697.46	-1781.82	40°21'27.0832"N	104°43'28.5282"W	0.85	
13378.00	89.750	358.080	6994.95	6975.85	6791.42	-1784.24	40°21'28.0120"N	104°43'28.5487"W	0.96	
13565.00	89.880	358.010	6995.55	7161.75	6978.31	-1790.62	40°21'29.8592"N	104°43'28.6100"W	0.08	
13658.00	89.850	358.190	6995.77	7254.20	7071.26	-1793.70	40°21'30.7780"N	104°43'28.6393"W	0.20	
13752.00	89.880	358.170	6995.99	7347.63	7165.21	-1796.68	40°21'31.7066"N	104°43'28.6673"W	0.04	
13846.00	89.690	358.070	6996.34	7441.06	7259.16	-1799.77	40°21'32.6352"N	104°43'28.6965"W	0.23	
13940.00	89.690	358.090	6996.85	7534.50	7353.11	-1802.92	40°21'33.5638"N	104°43'28.7266"W	0.02	
14033.00	90.030	358.210	6997.08	7626.94	7446.06	-1805.92	40°21'34.4825"N	104°43'28.7548"W	0.39	
14127.00	89.750	358.160	6997.26	7720.37	7540.01	-1808.90	40°21'35.4111"N	104°43'28.7827"W	0.30	
14220.00	89.850	358.290	6997.58	7812.79	7632.97	-1811.78	40°21'36.3299"N	104°43'28.8094"W	0.18	
14315.00	89.940	358.300	6997.76	7907.19	7727.93	-1814.60	40°21'37.2685"N	104°43'28.8352"W	0.10	
14408.00	90.000	359.570	6997.81	7999.48	7820.91	-1816.33	40°21'38.1874"N	104°43'28.8470"W	1.37	
14501.00	89.940	359.370	6997.86	8091.65	7913.90	-1817.19	40°21'39.1064"N	104°43'28.8476"W	0.22	
14595.00	89.940	359.500	6997.95	8184.83	8007.90	-1818.12	40°21'40.0353"N	104°43'28.8490"W	0.14	
14689.00	89.820	359.440	6998.15	8278.00	8101.89	-1818.99	40°21'40.9642"N	104°43'28.8496"W	0.14	
14782.00	89.820	359.520	6998.44	8370.17	8194.89	-1819.83	40°21'41.8831"N	104°43'28.8500"W	0.09	
14877.00	89.720	359.520	6998.82	8464.32	8289.89	-1820.63	40°21'42.8219"N	104°43'28.8495"W	0.11	
14971.00	89.880	359.330	6999.15	8557.50	8383.88	-1821.57	40°21'43.7508"N	104°43'28.8511"W	0.26	
15065.00	89.850	359.450	6999.37	8650.68	8477.87	-1822.57	40°21'44.6796"N	104°43'28.8534"W	0.13	
15158.00	89.850	359.280	6999.62	8742.88	8570.87	-1823.60	40°21'45.5986"N	104°43'28.8562"W	0.18	

WELLPATH DATA (209 stations)

MD [ft]	Inclination [°]	Azimuth [°]	TVD [ft]	Vert Sect [ft]	North [ft]	East [ft]	Latitude	Longitude	DLS [°/100ft]	Comments
15252.00	89.910	359.340	6999.81	8836.09	8664.86	-1824.74	40°21'46.5275"N	104°43'28.8602"W	0.09	
15346.00	89.850	359.520	7000.01	8929.26	8758.86	-1825.67	40°21'47.4564"N	104°43'28.8617"W	0.20	
15440.00	89.940	359.490	7000.18	9022.43	8852.85	-1826.48	40°21'48.3853"N	104°43'28.8616"W	0.10	
15533.00	89.880	358.780	7000.33	9114.67	8945.84	-1827.89	40°21'49.3042"N	104°43'28.8692"W	0.77	
15627.00	89.690	359.560	7000.68	9207.90	9039.83	-1829.25	40°21'50.2331"N	104°43'28.8762"W	0.85	
15721.00	89.850	359.640	7001.06	9301.04	9133.83	-1829.91	40°21'51.1620"N	104°43'28.8740"W	0.19	
15908.00	89.880	359.650	7001.50	9486.31	9320.82	-1831.06	40°21'53.0098"N	104°43'28.8679"W	0.02	
16003.00	89.690	359.500	7001.86	9580.45	9415.82	-1831.77	40°21'53.9486"N	104°43'28.8663"W	0.25	
16095.00	89.880	359.400	7002.20	9671.64	9507.81	-1832.65	40°21'54.8577"N	104°43'28.8673"W	0.23	
16190.00	89.910	359.330	7002.38	9765.82	9602.81	-1833.70	40°21'55.7964"N	104°43'28.8701"W	0.08	
16283.00	89.780	359.530	7002.63	9858.01	9695.80	-1834.63	40°21'56.7154"N	104°43'28.8716"W	0.26	
16377.00	90.000	359.530	7002.81	9951.16	9789.80	-1835.40	40°21'57.6443"N	104°43'28.8709"W	0.23	
16472.00	90.150	359.480	7002.68	10045.31	9884.80	-1836.22	40°21'58.5831"N	104°43'28.8708"W	0.17	
16565.00	90.000	359.420	7002.56	10137.50	9977.79	-1837.11	40°21'59.5021"N	104°43'28.8718"W	0.17	
16658.00	90.150	359.730	7002.44	10229.65	10070.79	-1837.80	40°22'0.4211"N	104°43'28.8702"W	0.37	
16752.00	90.060	359.370	7002.27	10322.80	10164.79	-1838.54	40°22'1.3499"N	104°43'28.8692"W	0.39	
16846.00	90.150	359.430	7002.10	10415.99	10258.78	-1839.53	40°22'2.2788"N	104°43'28.8713"W	0.12	
16940.00	90.060	359.620	7001.92	10509.14	10352.78	-1840.31	40°22'3.2077"N	104°43'28.8707"W	0.22	
17033.00	90.000	359.320	7001.87	10601.32	10445.77	-1841.17	40°22'4.1267"N	104°43'28.8713"W	0.33	
17126.00	90.280	359.430	7001.65	10693.52	10538.77	-1842.18	40°22'5.0457"N	104°43'28.8739"W	0.32	
17220.00	90.220	359.470	7001.24	10786.69	10632.76	-1843.08	40°22'5.9745"N	104°43'28.8750"W	0.08	
17314.00	90.030	359.530	7001.03	10879.85	10726.76	-1843.90	40°22'6.9034"N	104°43'28.8749"W	0.21	
17408.00	90.000	359.370	7001.01	10973.02	10820.75	-1844.81	40°22'7.8323"N	104°43'28.8760"W	0.17	
17502.00	90.120	359.640	7000.91	11066.19	10914.75	-1845.62	40°22'8.7612"N	104°43'28.8759"W	0.31	
17595.00	90.150	359.100	7000.69	11158.38	11007.74	-1846.64	40°22'9.6802"N	104°43'28.8786"W	0.58	
17689.00	90.030	359.430	7000.54	11251.60	11101.74	-1847.85	40°22'10.6090"N	104°43'28.8835"W	0.37	
17781.00	90.180	359.710	7000.37	11342.76	11193.73	-1848.54	40°22'11.5181"N	104°43'28.8821"W	0.35	
17874.00	89.970	359.100	7000.25	11434.95	11286.73	-1849.50	40°22'12.4371"N	104°43'28.8840"W	0.69	
17968.00	90.030	358.220	7000.25	11528.29	11380.70	-1851.70	40°22'13.3659"N	104°43'28.9018"W	0.94	
18062.00	90.120	358.560	7000.13	11621.67	11474.66	-1854.34	40°22'14.2946"N	104°43'28.9253"W	0.37	
18156.00	90.090	358.430	6999.96	11715.04	11568.63	-1856.81	40°22'15.2233"N	104°43'28.9466"W	0.14	
18250.00	90.030	358.070	6999.86	11808.45	11662.59	-1859.68	40°22'16.1520"N	104°43'28.9731"W	0.39	
18344.00	90.060	358.000	6999.78	11901.91	11756.53	-1862.90	40°22'17.0806"N	104°43'29.0041"W	0.08	
18437.00	90.090	358.400	6999.66	11994.33	11849.49	-1865.83	40°22'17.9993"N	104°43'29.0313"W	0.43	
18623.00	90.030	358.110	6999.47	12179.17	12035.40	-1871.49	40°22'19.8369"N	104°43'29.0835"W	0.16	
18717.00	90.060	358.250	6999.39	12272.60	12129.35	-1874.47	40°22'20.7655"N	104°43'29.1115"W	0.15	



Actual Wellpath Report

BLACKBURN 01N AWP

Page 5 of 7



REFERENCE WELLPATH IDENTIFICATION

Operator	PDC ENERGY INC	Well	BLACKBURN 01N
Field	WELD COUNTY (NAD83/GRID)	UWI/Legal	05-123-52754
Facility	SEC.01-T04N-R66W	Wellbore	BLACKBURN 01N AWB
Slot	SLOT#16 BLACKBURN 01N (1767'FSL & 798'FEL,SEC.01)		

WELLPATH DATA (209 stations) † = interpolated, ‡ = extrapolated station

MD [ft]	Inclination [°]	Azimuth [°]	TVD [ft]	Vert Sect [ft]	North [ft]	East [ft]	Latitude	Longitude	DLS [°/100ft]	Comments
18811.00	90.150	358.350	6999.22	12366.00	12223.31	-1877.26	40°22'21.6942"N	104°43'29.1369"W	0.14	
18904.00	90.090	358.220	6999.03	12458.41	12316.27	-1880.05	40°22'22.6130"N	104°43'29.1624"W	0.15	
18998.00	90.030	358.190	6998.93	12551.84	12410.22	-1882.99	40°22'23.5416"N	104°43'29.1898"W	0.07	
19091.00	90.000	358.060	6998.90	12644.28	12503.17	-1886.03	40°22'24.4603"N	104°43'29.2186"W	0.14	
19184.00	90.090	357.990	6998.83	12736.74	12596.12	-1889.24	40°22'25.3790"N	104°43'29.2495"W	0.12	
19277.00	90.090	358.060	6998.69	12829.20	12689.06	-1892.44	40°22'26.2977"N	104°43'29.2804"W	0.08	
19371.00	90.180	358.260	6998.46	12922.62	12783.01	-1895.46	40°22'27.2263"N	104°43'29.3088"W	0.23	
19465.00	90.280	358.310	6998.09	13016.03	12876.97	-1898.28	40°22'28.1550"N	104°43'29.3345"W	0.12	
19558.00	90.060	358.180	6997.81	13108.45	12969.93	-1901.12	40°22'29.0738"N	104°43'29.3608"W	0.27	
19651.00	90.030	358.130	6997.74	13200.89	13062.88	-1904.12	40°22'29.9925"N	104°43'29.3890"W	0.06	
19745.00	89.940	358.260	6997.76	13294.31	13156.83	-1907.08	40°22'30.9211"N	104°43'29.4167"W	0.17	
19840.00	90.120	358.030	6997.71	13388.74	13251.78	-1910.15	40°22'31.8596"N	104°43'29.4457"W	0.31	
19933.00	90.060	358.150	6997.57	13481.18	13344.73	-1913.25	40°22'32.7783"N	104°43'29.4752"W	0.14	Last BH MWD Survey
19975.00‡	90.060	358.150	6997.52	13522.93	13386.71	-1914.61	40°22'33.1933"N	104°43'29.4880"W	0.00	Projection to Bit



Actual Wellpath Report

BLACKBURN 01N AWP

Page 6 of 7



REFERENCE WELLPATH IDENTIFICATION			
Operator	PDC ENERGY INC	Well	BLACKBURN 01N
Field	WELD COUNTY (NAD83/GRID)	UWI/Legal	05-123-52754
Facility	SEC.01-T04N-R66W	Wellbore	BLACKBURN 01N AWB
Slot	SLOT#16 BLACKBURN 01N (1767'FSL & 798'FEL,SEC.01)		

TARGETS								
Name	TVD [ft]	North [ft]	East [ft]	Grid East [US ft]	Grid North [US ft]	Latitude	Longitude	Shape
Sec.01-T04N-R66W	-5.00	-139.47	176.56	3218050.25	1367194.45	40°20'19.3553"N	104°43'4.0112"W	polygon
	2D Polygon:: dimensions not calculated							
Sec.06-T04N-R65W	-5.00	-139.47	176.56	3218050.25	1367194.45	40°20'19.3553"N	104°43'4.0112"W	polygon
	2D Polygon:: dimensions not calculated							
Sec.25-T05N-R66W	-5.00	-139.47	176.56	3218050.25	1367194.45	40°20'19.3553"N	104°43'4.0112"W	polygon
	2D Polygon:: dimensions not calculated							
Sec.30-T05N-R65W	-5.00	-139.47	176.56	3218050.25	1367194.45	40°20'19.3553"N	104°43'4.0112"W	polygon
	2D Polygon:: dimensions not calculated							
Sec.31-T05N-R65W	-5.00	-139.47	176.56	3218050.25	1367194.45	40°20'19.3553"N	104°43'4.0112"W	polygon
	2D Polygon:: dimensions not calculated							
Sec.36-T05N-R66W	-5.00	-139.47	176.56	3218050.25	1367194.45	40°20'19.3553"N	104°43'4.0112"W	polygon
	2D Polygon:: dimensions not calculated							
BLACKBURN 01N Rev-2 LP (2401'FNL & 2488'FEL Sec.01)	6989.00	990.20	-1709.29	3216164.48	1368324.06	40°20'30.6816"N	104°43'28.2360"W	point
BLACKBURN 01N LP (2401'FNL & 2488'FEL Sec.01)	6991.00	990.20	-1709.29	3216164.48	1368324.06	40°20'30.6816"N	104°43'28.2360"W	point
BLACKBURN 01N BHL (150'FNL & 2550'FEL,SEC.25)	6998.00	13834.35	-1926.66	3215947.12	1381167.65	40°22'37.6176"N	104°43'29.5932"W	point
BLACKBURN 01N BHL Rev-2 (592'FNL & 2547'FEL Sec.25)	6998.00	13392.13	-1919.18	3215954.61	1380725.45	40°22'33.2472"N	104°43'29.5464"W	point
BLACKBURN 01N BPZ 200'FNL&2550'FELSEC.25	6998.00	13784.80	-1927.07	3215946.72	1381118.10	40°22'37.1280"N	104°43'29.6040"W	point
HORII #1 No Go Zone (1500'Radius)	7132.00	14635.31	-2784.29	3215089.53	1381968.57	40°22'45.6060"N	104°43'40.5840"W	circle
	2D Circle: radius 1500.							

TARGETS								
Name	TVD [ft]	North [ft]	East [ft]	Grid East [US ft]	Grid North [US ft]	Latitude	Longitude	Shape
R.R. Federal Minerals	7195.00	-139.47	176.56	3218050.25	1367194.45	40°20'19.3553"N	104°43'4.0112"W	polygon
	2D Polygon:: dimensions not calculated							
Blackburn 1-15 DSU Hardline (200'FNL/FSL&300'FEL/FWL	7600.00	0.00	0.00	3217873.70	1367333.91	40°20'20.7488"N	104°43'6.2753"W	polygon
	2D Polygon:: dimensions not calculated							

WELLPATH COMPOSITION - Ref Wellbore: BLACKBURN 01N AWB Ref Wellpath: BLACKBURN 01N AWP					
Start MD [ft]	End MD [ft]	Positional Uncertainty Model	Log Name/Comment	Wellbore	Survey Date
25.00	1593.00	OWSG MWD rev2 - Standard	3rd Party Surface MWD Survey <209' - 1593'>	BLACKBURN 01N AWB	2026-03-19
1593.00	19975.00	OWSG MWD rev2 (MS+IFR1)	8.5" ATC Lucida OWSG MWD rev2 (MS+IFR1) <1773' - 19933'>	BLACKBURN 01N AWB	2026-03-19



Actual Wellpath Report

BLACKBURN 01N AWP

Page 7 of 7



REFERENCE WELLPATH IDENTIFICATION			
Operator	PDC ENERGY INC	Well	BLACKBURN 01N
Field	WELD COUNTY (NAD83/GRID)	UWI/Legal	05-123-52754
Facility	SEC.01-T04N-R66W	Wellbore	BLACKBURN 01N AWB
Slot	SLOT#16 BLACKBURN 01N (1767'FSL & 798'FEL,SEC.01)		

WELLPATH COMMENTS				
MD [ft]	Inclination [°]	Azimuth [°]	TVD [ft]	Comment
1773.00	15.210	276.790	1730.65	First BH MWD Survey
7576.85	89.869	358.914	6987.09	Cross Hardline
19933.00	90.060	358.150	6997.57	Last BH MWD Survey
19975.00	90.060	358.150	6997.52	Projection to Bit