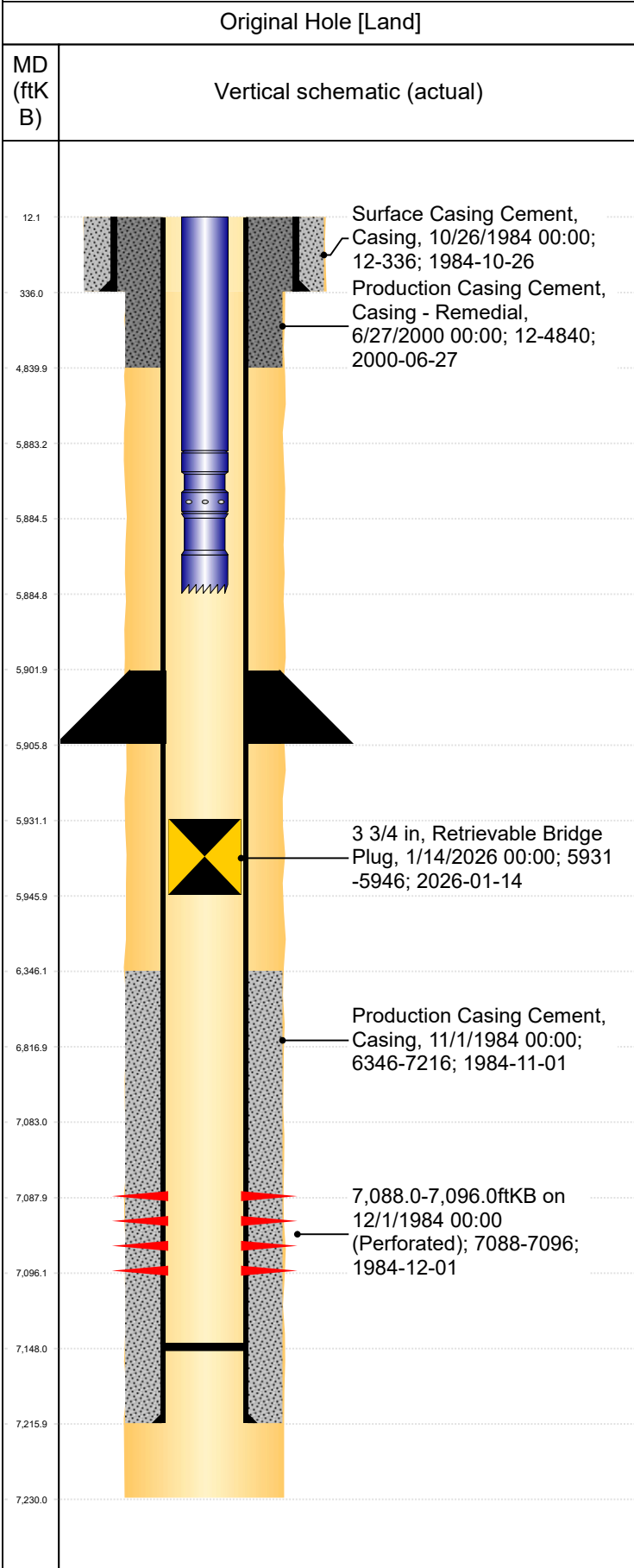




Wellbore For State - Vertical

Well Name: Schafer 1



| Well Header | | | | | | | | | |
|---|-------------------------|----------------------------------|---------------|------------------|-----------------------------|-----------------------|--------------------------------|--------------------------------|--|
| Surface UWI 0512312042 | | Business Unit Rockies | | | Gov Auth Dist Evans | | Prod Tree Loc Land | | |
| Orig. KB to Gnd (ft) | | Original Spud Date 10/26/1984 | | Abandon Date | | Well Sub-Status PR | | High... | |
| | | | | | | | | N | |
| Comment | | | | | | | | | |
| Geologic Horizons | | | | | | | | | |
| Formation Name Codell | | | | | | | | Final Top MD (ftKB) 7,083.2 | |
| Formation Name Nio A Chalk | | | | | | | | Final Top MD (ftKB) 6,833.5 | |
| Formation Name Pierre | | | | | | | | Final Top MD (ftKB) 510.6 | |
| Formation Name Pierre (Upper) Aquifer Base | | | | | | | | Final Top MD (ftKB) 1,537.0 | |
| Formation Name Pierre (Upper) Aquifer Top | | | | | | | | Final Top MD (ftKB) 566.8 | |
| Formation Name Pierre_TPB_A | | | | | | | | Final Top MD (ftKB) 6,780.7 | |
| Congressional Location | | | | | | | | | |
| Quarter 3 SW | Quarter 4 SE | Section 8 | Township 6 | Twnshp N... | Range 65 | Rng E/W Dir W | Latitude (°) 40.4957 | Longitude (°) -104.68524 | |
| Wellbore Sections | | | | | | | | | |
| Section Des | | Hole Size (in) | | Top Depth (ftKB) | | Btm Depth (ftKB) | | | |
| Surface | | 12 1/4 | | 12.0 | | 336.0 | | | |
| Production | | 7 7/8 | | 336.0 | | 7,230.0 | | | |
| Casing Strings | | | | | | | | | |
| Csg Des | | Run Date | OD (in) | Wt/Len (lb/ft) | Grade | Top Depth (MD) (ftKB) | Set Depth (MD) (ftKB) | | |
| Surface | | 10/26/1984 | 9 5/8 | 36.00 | | 12 | 336 | | |
| Production Casing | | 6/22/2000 | 4 1/2 | 11.60 | J-55 | 12 | 5906 | | |
| Production | | 11/1/1984 | 4 1/2 | 11.60 | | 12 | 7216 | | |
| Cement | | | | | | | | | |
| Des | | Start Date | | Top (ftKB) | | Btm (ftKB) | | | |
| Surface Casing Cement | | 10/26/1984 | | 12.0 | | 336.0 | | | |
| Production Casing Cement | | 11/1/1984 | | 6,346.0 | | 7,216.0 | | | |
| Production Casing Cement | | 6/27/2000 | | 12.0 | | 4,840.0 | | | |
| Stim/Frac Summary | | | | | | | | | |
| Min Top Depth (ftKB) | | | | | Max Btm Depth (ftKB) | | | | |
| | | | | | | | | | |
| Perforations | | | | | | | | | |
| Linked Zone CODELL, Original Hole | | Date 12/1/1984 00:00 | | | Top Depth (ftKB) 7,088.0 | | Bottom Depth (ftKB) 7,096.0 | | |
| Other In Hole | | | | | | | | | |
| Run Date | Des | | Make | | OD (in) | Top (ftKB) | Btm (ftKB) | | |
| 1/14/2026 | Retrievable Bridge Plug | | | | 3 3/4 | 5,931.0 | 5,946.0 | | |
| Logs | | | | | | | | | |
| Date | | Type | | | Depth Top (MD) (ftKB) | | Btm (ftKB) | | |
| | | | | | | | | | |
| Wellbore Plug Back Total Depths | | | | | | | | | |
| Date | Type | | Com | | | | | PBTD (ftKB) | |
| 6/29/2000 | | | | | | | | 7,148 | |