



Re: GEIST 2-0-32 (123-24260) | P&A

From McFarland - DNR, Nick <nick.mcfarland@state.co.us>

Date Fri 2/6/2026 8:20 AM

To Chris Ogonna <cogbonna@civiresources.com>

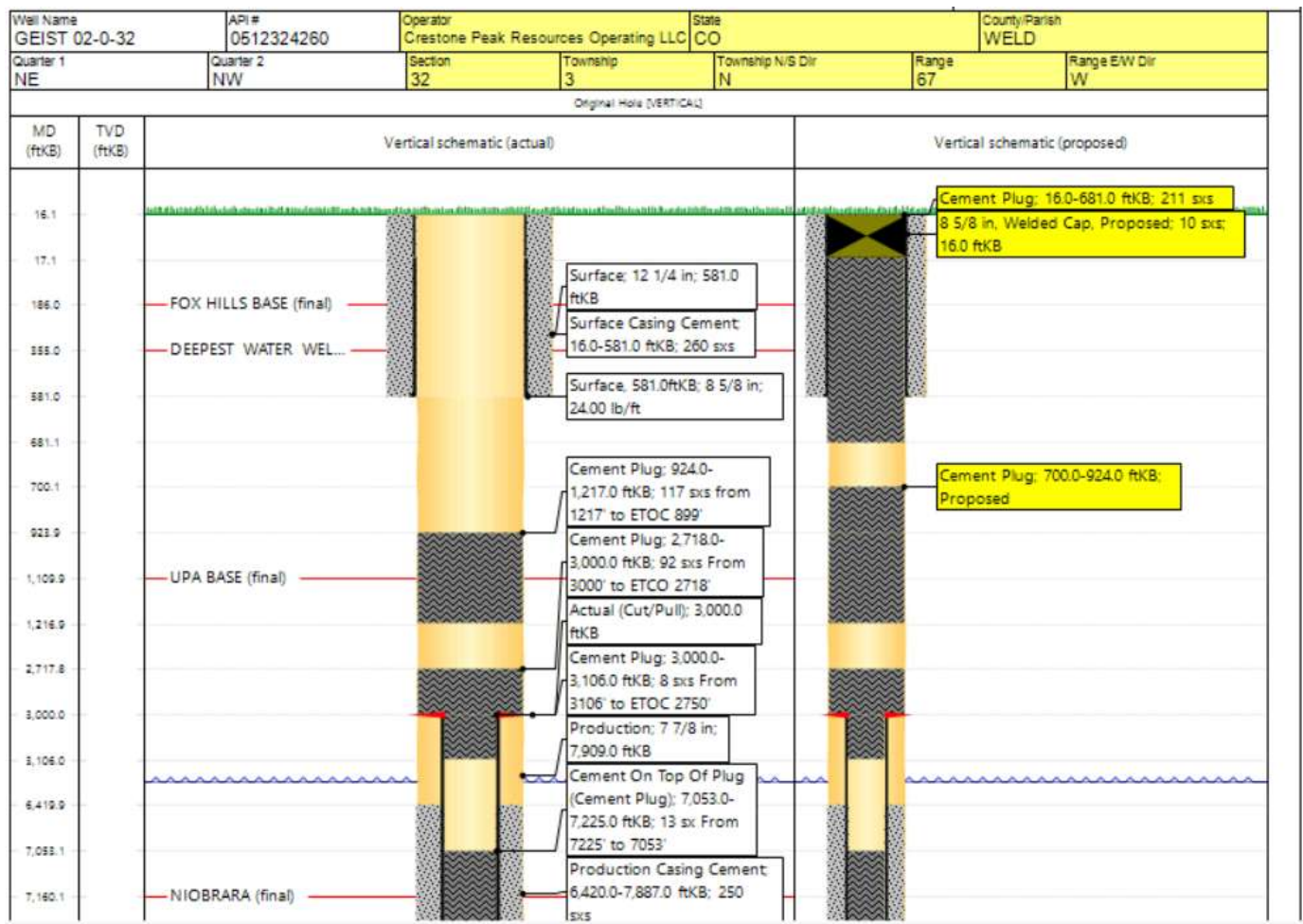
Cc Matt Thome <mthome@civiresources.com>; TJ Hanneman <thanneman@civiresources.com>; Adam Conry <aconry@civiresources.com>; Amanda Flinn <aflinn@civiresources.com>; Randy Williams <rwilliams@civiresources.com>; Dave Magruder <dmagruder@civiresources.com>; Regulatory <regulatory@civiresources.com>

OK, that will work. Thanks.

On Fri, Feb 6, 2026 at 8:16AM Chris Ogonna <cogbonna@civiresources.com> wrote:

Morning Nick,

We're still getting water trickle from this well after setting the approved balance plug below, tagged this morning at 924'. We're planning on adding another 200' balance plug from 924'. After we pump the plug, we'll shutdown for the weekend, return Monday to monitor for results. Will keep you posted. Please let me know if any questions or concerns,



Thanks,

Chris Ogbonna

Production Engineer

cell: (720) 435 – 9250

From: McFarland - DNR, Nick <nick.mcfarland@state.co.us>

Sent: Thursday, February 5, 2026 9:32 AM

To: Chris Ogbonna <cogbonna@civiresources.com>

Cc: Matt Thome <mthome@civiresources.com>; TJ Hanneman <thanneman@civiresources.com>; Adam Conry <aconry@civiresources.com>; Amanda Flinn <aflinn@civiresources.com>; Randy Williams <rwilliams@civiresources.com>; Dave Magruder <dmagruder@civiresources.com>; Regulatory <regulatory@civiresources.com>

Subject: Re: GEIST 2-0-32 (123-24260) | P&A

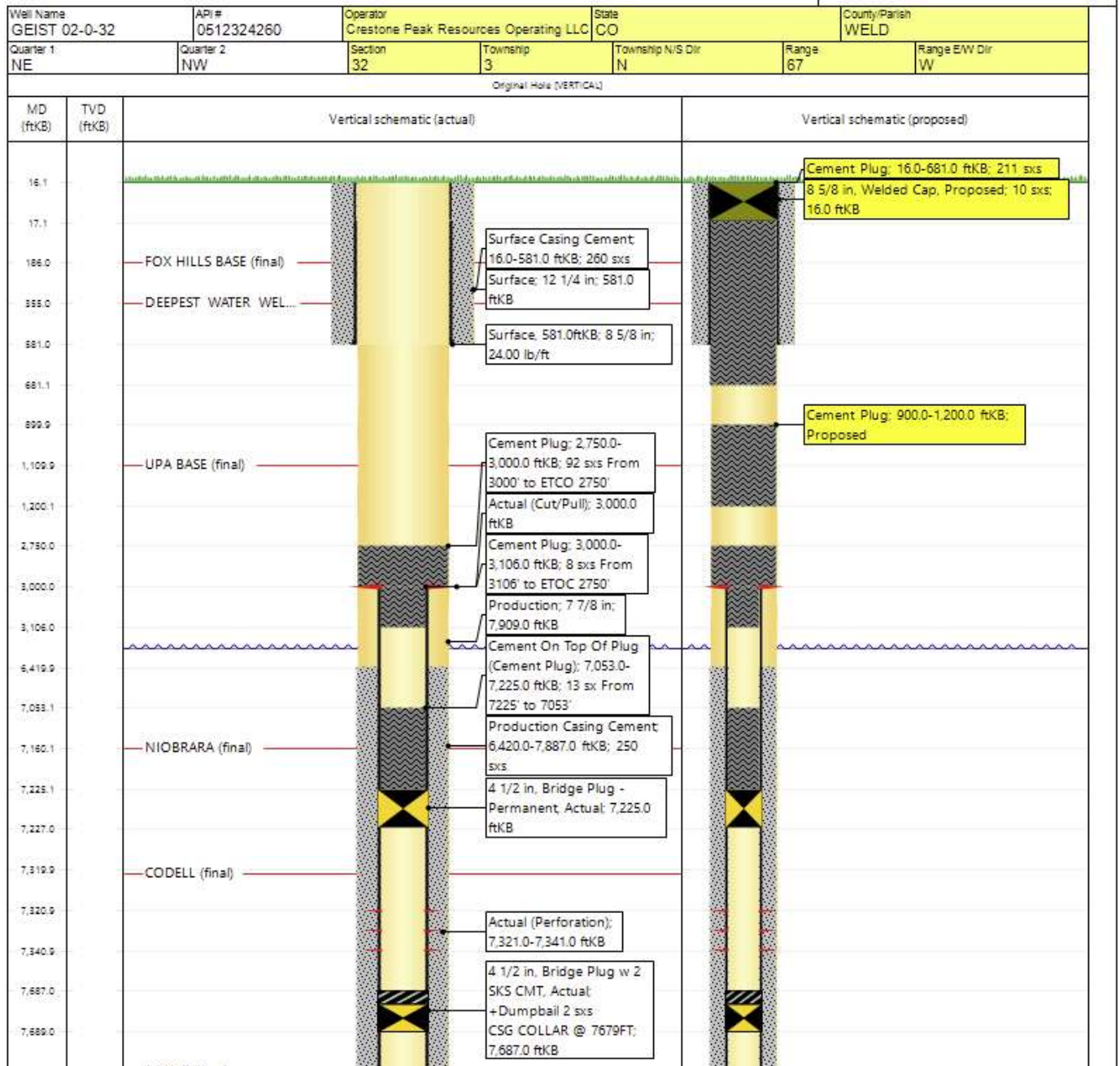
Sounds great, thanks for the update!

On Thu, Feb 5, 2026 at 8:43 AM Chris Ogbonna <cogbonna@civiresources.com> wrote:

Good Morning Nick,

We're continuing to work through the Geist P&As, currently rigged up on the Geist 2-0-32 (API: 123-24260). We've worked through the approved P&A to the stub plug, pumped yesterday before shutting down for the night. We've got some water trickle from the well this morning, no bubbles seen or LELs detected.

Similar to what we did at the Geist 21-32, we'll be adding a courtesy plug to the procedure. We'll place it across the UPA in efforts to stop the water migration, we'll pump it from 1200' to 900' then shutdown to WOC overnight. We'll return tomorrow to monitor for results and ensure static conditions, will keep you posted tomorrow on how it looks and our next steps. Please let me know if any concerns or questions,



Thanks,

Chris Ogonna

Production Engineer

cell: (720) 435 – 9250

If immediate assistance is needed please give me a call.

Nick McFarland - P.E.

Area Engineer



COLORADO
Energy & Carbon Management
Commission
Department of Natural Resources

P 7203786.1208

1120 Lincoln Street, Suite 801, Denver, CO 80203

nick.mcfarland@state.co.us | <https://ecmc.colorado.gov/>



Phone: 720-786-1208

1120 Lincoln Street, Suite 801, Denver, CO 80203

nick.mcfarland@state.co.us | www.colorado.gov/ecmc

--

If immediate assistance is needed please give me a call.

Nick McFarland - P.E.

Area Engineer



COLORADO
Energy & Carbon Management
Commission
Department of Natural Resources

P 7203786.1208

1120 Lincoln Street, Suite 801, Denver, CO 80203

nick.mcfarland@state.co.us | <https://ecmc.colorado.gov/>



COLORADO
Energy & Carbon Management
Commission
Department of Natural Resources

Phone: 720-786-1208

1120 Lincoln Street, Suite 801, Denver, CO 80203

nick.mcfarland@state.co.us | www.colorado.gov/ecmc