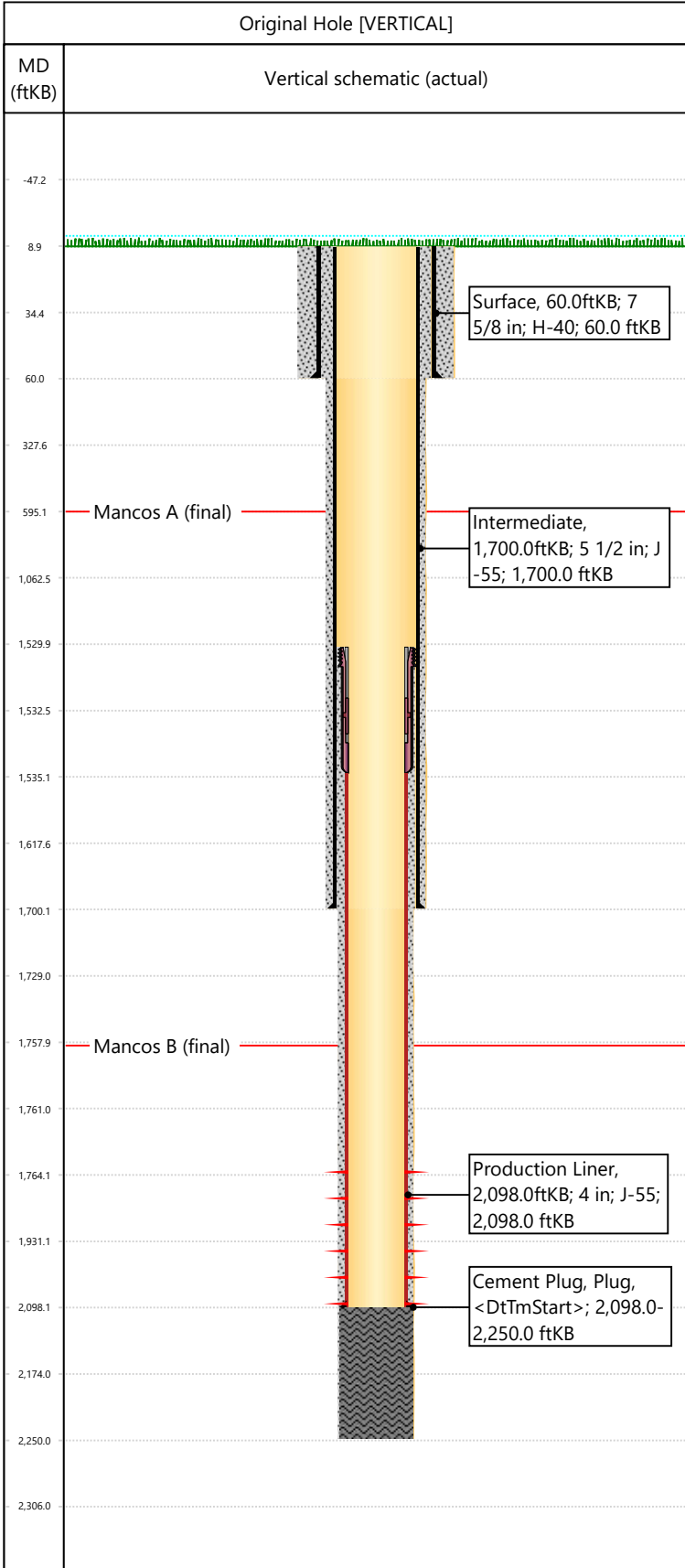


Well Name: DOUGLAS CK UN 08

API/UWI 05103060020000	Surface Legal Location 01-03S-102W	Field Name Douglas Creek	License #	State/Province CO	Well Configuration Type VERTICAL
Original KB Elevation (ft) 6,357	KB-Tubing Head Distance (ft)	Spud Date 10/27/1960 00:00	Rig Release Date	PBTD (All) (KB)	Total Depth All (TVD) (KB)



Section Description	Size (in)	Btm Depth (ftKB)
Surface	9 7/8	60.0
Production	6 1/4	1,700.0
Openhole	4 3/4	2,250.0

Formation Name	Final Top MD (ftKB)
Mancos A	595.0
Mancos B	1,758.0

Csg Des	OD (in)	Wt/Len (lb/ft)	Grade	Set Depth (ftKB)
Surface	7 5/8	24.00	H-40	60.0
Intermediate	5 1/2	14.00	J-55	1,700.0
Production Liner	4	11.34	J-55	2,098.0

Date	Top (ftKB)	Btm (ftKB)	Zone
1764	2098		Mancos B, Original Hole

Total

Tubing Description	Run Date	String Length (ft)	Set Depth (ftKB)
Item Des	Icon	Jts	OD (in)

Rod Description	Run Date	String Length (ft)	Set Depth (ftKB)
Item Des	Icon	Jts	OD (in)

Des	Icon	OD (in)	Top (ftKB)	Btm (ftKB)	Run Date	Pull Date

Description	Proposed/Actual Run	Type	Top Depth (ftKB)
Surface Casing Cement	Actual	Casing	9.0
Intermediate 1 Casing Cement	Actual	Casing	9.0
Production Liner Casing Cement	Actual	Casing	1,530.0
Cement Plug	Actual	Plug	2,098.0