



Hwy52 & CR19 (G) Spill ID 493177
© 26-Mar-26 08:08:56
ECMC Environmental Inspection

**ECMC
Environmental
Field Inspection**



Valve cans along the east side of Weld County Road 19 - No Legible Signage

WGS84
±12ft

40.07697, -104.88624

m
±3m

1517

°T
±14

S176



**ECMC
Environmental
Field Inspection**



Hwy52 & CR19 (G) Spill ID 493177

© 26-Mar-26 08:09:02

ECMC Environmental Inspection

Locate markers with faded, illegible and/or missing signage located on the west side of Weld County Road 19 - One reads "CAUTION Oil & Gas Pipeline" with stickers placed ontop reading "KPK"



Weld County
±23ft

40.07685, -104.88623

1515 m
±4m

1515

NE42

Hwy52 & CR19 (G) Spill ID 493177

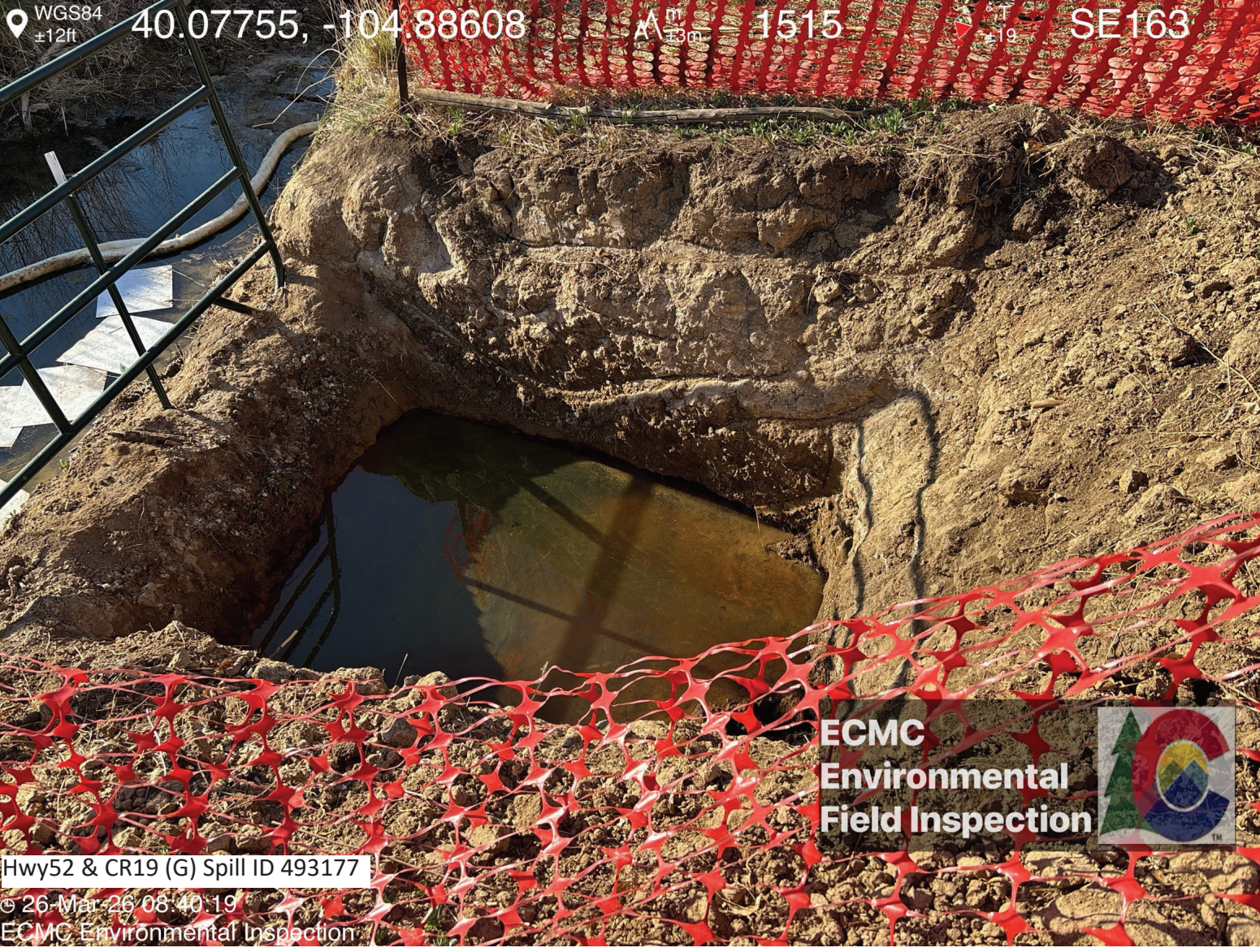
© 26-Mar-26 08:10:40

ECMG Environmental Inspection

**ECMC
Environmental
Field Inspection**



Valve cans along the east side of Weld County Road 19 - No Legible Signage



Free product on open excavation adjacent to Little Dry Creek.



Hwy52 & CR19 (G) Spill ID 493177
26-Mar-26 08:40:22
ECMC Environmental Inspection

ECMC
Environmental
Field Inspection



Hydrophobic oil-absorbent booms and mats placed in Little Dry Creek. A hydrocarbon sheen was observed on the surface of Little Dry Creek.