



Certificate of Analysis  
 Number: 1030-26040367-002A

Houston Laboratories  
 8820 Interchange Drive  
 Houston, TX 77054  
 Phone 713-660-0901

Luke Arnsberger  
 Dolan Intergration Group  
 11025 Dover St, Ste 800  
 Westminster, CO 80021

Sample ID: 26041347-002A  
 Station Name: DCP CR19 Condensate Line  
 Station Number: Spill ID 493177  
 Station Location: Hwy 52 & CR19 (G) 2/2026  
 Cylinder No: 043484  
 Instrument: PIANO, WT  
 Analyzed: 04/14/2026 11:23:00 by HKP

Report Date: 04/22/2026  
 Sampled By:  
 Sample Of: Liquid Spot  
 Sample Date: 04/01/2026 13:35  
 Sample Conditions:  
 Received Date: 04/10/2026  
 Login Date: 04/13/2026  
 Method: Proprietary

**Analytical Data**

Carbon Range	C4-C8, C15-C18	Major Range	C4-C6
Paraffins	54.857 wt%	n-Hexane	4.874 wt%
Isoparaffins	39.359 wt%	Benzene	0.560 wt%
Olefins	ND wt%	2,2,4-Trimethylpentane	ND wt%
Naphthenics	4.952 wt%	Toluene	0.272 wt%
Aromatics	0.832 wt%	Ethylbenzene	ND wt%
Unknowns	ND wt%	m-Xylene	ND wt%
		p-Xylene	ND wt%
		o-Xylene	ND wt%
C1-C29 Total	100.000 wt%	Xylenes	ND wt%
Naphthalene	ND wt%	n-Heptadecane	0.051 wt%
2-Methylnaphthalene	ND wt%	Pristane	ND wt%
1-Methylnaphthalene	ND wt%	n-Octadecane	0.020 wt%
Oxygenates	ND wt%	Phytane	ND wt%
		Ethanol	ND wt%

ND = Not Detected

Gasoline Range: C4 - C13 Indicators: Isooctane, Olefins  
 Diesel Range: C7 - C20 Indicators: Pristane, Phytane  
 Condensate Range: C2 - C25 + Indicators: No Olefins, Light & Heavies  
 Heavy Oil: C20 +

Joseph Ponminissery, Laboratory Director

Quality Assurance: The above analyses are performed in accordance with ASTM, UOP, GPA guidelines for quality assurance, unless otherwise stated. The test results apply to the sample as received.

# Detailed Hydrocarbon Analysis Report

Operator: Marina Garcia

Raw File: H:\COMPASS\PIANO Dragon II Export\CDF Files Dragon II\1030\_HGC26\26040367-002A HKP.CDF

Sample File: H:\COMPASS\PIANO Dragon II Export\DHA Results Dragon II\26040367-002A HKP\_04162026\_1354.DHA \*

Reference File: H:\COMPASS\PIANO Dragon II Export\Reference DHAs Dragon II\19-01-199-01 GC26 NaphCond 03.26.26 HKP\_03272026\_1324.DHA

Sample Name: 26040367-002A HKP Analyzed: 16-Apr-26, 13:54:20 Acquired: 14-Apr-26 11:23:00 Peaks Processed: 33 Total Area: 1.8 Normalization Factor: 100%

## Details Report

### Total Hydrocarbons by Group and Carbon Number, Mass %

C #	Paraffins	Iso Paraffins	Olefins	Naphthenes	Aromatics	Unknowns	Oxygenates	Total
C1	0.000	0.000	0.000	0.000	0.000	0.000	0.000	0.000
C2	0.000	0.000	0.000	0.000	0.000	0.000	0.000	0.000
C3	0.000	0.000	0.000	0.000	0.000	0.000	0.000	0.000
C4	13.451	1.647	0.000	0.000	0.000	0.000	0.000	15.098
C5	35.673	28.736	0.000	1.335	0.000	0.000	0.000	65.744
C6	4.874	7.806	0.000	2.616	0.560	0.000	0.000	15.856
C7	0.612	1.085	0.000	1.001	0.272	0.000	0.000	2.970
C8	0.074	0.042	0.000	0.000	0.000	0.000	0.000	0.116
C9	0.000	0.000	0.000	0.000	0.000	0.000	0.000	0.000
C10	0.000	0.000	0.000	0.000	0.000	0.000	0.000	0.000
C11	0.000	0.000	0.000	0.000	0.000	0.000	0.000	0.000
C12	0.000	0.000	0.000	0.000	0.000	0.000	0.000	0.000
C13	0.000	0.000	0.000	0.000	0.000	0.000	0.000	0.000
C14	0.000	0.000	0.000	0.000	0.000	0.000	0.000	0.000
C15	0.040	0.000	0.000	0.000	0.000	0.000	0.000	0.040
C16	0.062	0.000	0.000	0.000	0.000	0.000	0.000	0.062
C17	0.051	0.000	0.000	0.000	0.000	0.000	0.000	0.051
C18	0.020	0.043	0.000	0.000	0.000	0.000	0.000	0.063
C19	0.000	0.000	0.000	0.000	0.000	0.000	0.000	0.000
C20	0.000	0.000	0.000	0.000	0.000	0.000	0.000	0.000
C21	0.000	0.000	0.000	0.000	0.000	0.000	0.000	0.000
C22	0.000	0.000	0.000	0.000	0.000	0.000	0.000	0.000
C23	0.000	0.000	0.000	0.000	0.000	0.000	0.000	0.000
C24	0.000	0.000	0.000	0.000	0.000	0.000	0.000	0.000
C25	0.000	0.000	0.000	0.000	0.000	0.000	0.000	0.000
C26	0.000	0.000	0.000	0.000	0.000	0.000	0.000	0.000
C27	0.000	0.000	0.000	0.000	0.000	0.000	0.000	0.000
C28	0.000	0.000	0.000	0.000	0.000	0.000	0.000	0.000
C29	0.000	0.000	0.000	0.000	0.000	0.000	0.000	0.000
C30	0.000	0.000	0.000	0.000	0.000	0.000	0.000	0.000
Total	54.857	39.359	0.000	4.952	0.832	0.000	0.000	100.000

# Detailed Hydrocarbon Analysis Report

Operator: Marina Garcia

Raw File: H:\COMPASS\PIANO Dragon II Export\CDF Files Dragon II\1030\_HGC26\26040367-002A HKP.CDF

Sample File: H:\COMPASS\PIANO Dragon II Export\DHA Results Dragon II\26040367-002A HKP\_04162026\_1354.DHA \*

Reference File: H:\COMPASS\PIANO Dragon II Export\Reference DHAs Dragon II\19-01-199-01 GC26 NaphCond 03.26.26 HKP\_03272026\_1324.DHA

Sample Name: 26040367-002A HKP Analyzed: 16-Apr-26, 13:54:20 Acquired: 14-Apr-26 11:23:00 Peaks Processed: 33 Total Area: 1.8 Normalization Factor: 100%

## Total Hydrocarbons by Group and Carbon Number, Mole %

C #	Paraffins	Iso Paraffins	Olefins	Naphthenes	Aromatics	Unknowns	Oxygenates	Total
C1	0.000	0.000	0.000	0.000	0.000	0.000	0.000	0.000
C2	0.000	0.000	0.000	0.000	0.000	0.000	0.000	0.000
C3	0.000	0.000	0.000	0.000	0.000	0.000	0.000	0.000
C4	16.662	2.041	0.000	0.000	0.000	0.000	0.000	18.703
C5	35.598	28.676	0.000	1.370	0.000	0.000	0.000	65.644
C6	4.072	6.523	0.000	2.238	0.516	0.000	0.000	13.349
C7	0.440	0.780	0.000	0.733	0.212	0.000	0.000	2.165
C8	0.047	0.026	0.000	0.000	0.000	0.000	0.000	0.073
C9	0.000	0.000	0.000	0.000	0.000	0.000	0.000	0.000
C10	0.000	0.000	0.000	0.000	0.000	0.000	0.000	0.000
C11	0.000	0.000	0.000	0.000	0.000	0.000	0.000	0.000
C12	0.000	0.000	0.000	0.000	0.000	0.000	0.000	0.000
C13	0.000	0.000	0.000	0.000	0.000	0.000	0.000	0.000
C14	0.000	0.000	0.000	0.000	0.000	0.000	0.000	0.000
C15	0.013	0.000	0.000	0.000	0.000	0.000	0.000	0.013
C16	0.020	0.000	0.000	0.000	0.000	0.000	0.000	0.020
C17	0.015	0.000	0.000	0.000	0.000	0.000	0.000	0.015
C18	0.006	0.012	0.000	0.000	0.000	0.000	0.000	0.018
C19	0.000	0.000	0.000	0.000	0.000	0.000	0.000	0.000
C20	0.000	0.000	0.000	0.000	0.000	0.000	0.000	0.000
C21	0.000	0.000	0.000	0.000	0.000	0.000	0.000	0.000
C22	0.000	0.000	0.000	0.000	0.000	0.000	0.000	0.000
C23	0.000	0.000	0.000	0.000	0.000	0.000	0.000	0.000
C24	0.000	0.000	0.000	0.000	0.000	0.000	0.000	0.000
C25	0.000	0.000	0.000	0.000	0.000	0.000	0.000	0.000
C26	0.000	0.000	0.000	0.000	0.000	0.000	0.000	0.000
C27	0.000	0.000	0.000	0.000	0.000	0.000	0.000	0.000
C28	0.000	0.000	0.000	0.000	0.000	0.000	0.000	0.000
C29	0.000	0.000	0.000	0.000	0.000	0.000	0.000	0.000
C30	0.000	0.000	0.000	0.000	0.000	0.000	0.000	0.000
Total	56.873	38.058	0.000	4.341	0.728	0.000	0.000	100.000

# Detailed Hydrocarbon Analysis Report

Operator: Marina Garcia

Raw File: H:\COMPASS\PIANO Dragon II Export\CDF Files Dragon II\1030\_HGC26\26040367-002A HKP.CDF

Sample File: H:\COMPASS\PIANO Dragon II Export\DHA Results Dragon II\26040367-002A HKP\_04162026\_1354.DHA \*

Reference File: H:\COMPASS\PIANO Dragon II Export\Reference DHAs Dragon II\19-01-199-01 GC26 NaphCond 03.26.26 HKP\_03272026\_1324.DHA

Sample Name: 26040367-002A HKP Analyzed: 16-Apr-26, 13:54:20 Acquired: 14-Apr-26 11:23:00 Peaks Processed: 33 Total Area: 1.8 Normalization Factor: 100%

## Individual Component Results

Component	Group	Retention Time	Retention Index	Area	Mass %	Vol %	Mole %	BP (F)	BP (C)	CAS #
i-butane	I4	9.068	354.98	0.0	1.647	1.875	2.041	10.9	(11.7)	75-28-5
n-butane	P4	9.471	400.00	0.3	13.451	14.721	16.662	31.1	(0.5)	106-97-8
2,2-dimethylpropane	I5	9.679	410.08	0.0	0.098	0.104	0.098	49.1	9.5	463-82-1
i-pentane	I5	10.953	467.36	0.6	28.638	28.984	28.578	82.1	27.8	78-78-4
n-pentane	P5	11.752	500.00	0.7	35.673	35.723	35.598	96.9	36.1	109-66-0
2,2-dimethylbutane	I6	13.280	530.21	0.0	0.274	0.266	0.229	121.5	49.7	75-83-2
cyclopentane	N5	14.868	558.13	0.0	1.335	1.123	1.370	120.7	49.3	287-92-3
2,3-dimethylbutane	I6	14.972	559.84	0.0	0.685	0.650	0.573	136.4	58.0	79-29-8
2-methylpentane	I6	15.225	563.99	0.1	4.644	4.446	3.880	140.5	60.3	107-83-5
3-methylpentane	I6	16.248	580.07	0.0	2.203	2.080	1.841	145.9	63.3	96-14-0
n-hexane	P6	17.613	600.00	0.1	4.874	4.627	4.072	155.7	68.7	110-54-3
2,2-dimethylpentane	I7	19.898	623.88	0.0	0.047	0.042	0.034	174.5	79.2	590-35-2
methylcyclopentane	N6	20.128	626.13	0.0	1.627	1.363	1.392	161.2	71.8	96-37-7
2,4-dimethylpentane	I7	20.526	629.96	0.0	0.133	0.121	0.096	176.9	80.5	108-08-7
benzene	A6	22.637	649.13	0.0	0.560	0.401	0.516	176.2	80.1	71-43-2
cyclohexane	N6	23.758	658.59	0.0	0.989	0.797	0.846	177.3	80.7	110-82-7
2-methylhexane	I7	24.883	667.66	0.0	0.423	0.383	0.304	194.1	90.1	591-76-4
2,3-dimethylpentane	I7	25.093	669.30	0.0	0.148	0.134	0.106	193.6	89.8	565-59-3
1,1-dimethylcyclopentane	N7	25.434	671.94	0.0	0.081	0.066	0.059	189.5	87.5	1638-26-2
3-methylhexane	I7	25.998	676.23	0.0	0.334	0.302	0.240	197.3	91.9	589-34-4
1c,3-dimethylcyclopentane	N7	26.816	682.30	0.0	0.127	0.104	0.093	195.4	90.8	2532-58-3
1t,3-dimethylcyclopentane	N7	27.198	685.07	0.0	0.123	0.101	0.090	197.1	91.7	1759-58-6
1t,2-dimethylcyclopentane	N7	27.543	687.54	0.0	0.144	0.118	0.105	197.4	91.9	822-50-4
n-heptane	P7	29.353	700.00	0.0	0.612	0.565	0.440	209.2	98.4	142-82-5
methylcyclohexane	N7	32.220	720.85	0.0	0.526	0.429	0.386	213.7	100.9	108-87-2
toluene	A7	37.514	754.87	0.0	0.272	0.198	0.212	231.1	110.6	108-88-3
2-methylheptane	I8	39.738	767.75	0.0	0.042	0.037	0.026	243.8	117.7	592-27-8
n-octane	P8	45.902	800.00	0.0	0.074	0.066	0.047	258.2	125.7	111-65-9
n-pentadecane	P15	137.626	1500.00	0.0	0.040	0.032	0.013	518.0	270.0	629-62-9
n-hexadecane	P16	143.498	1600.00	0.0	0.062	0.051	0.020	547.9	286.6	544-76-3
n-heptadecane	P17	148.423	1700.00	0.0	0.051	0.041	0.015	575.6	302.0	629-78-7
C18-IsoParaffin	I18	150.121	1740.29	0.0	0.043	0.034	0.012	602.6	317.0	
n-octadecane	P18	152.673	1800.00	0.0	0.020	0.016	0.006	602.6	317.0	593-45-3
				1.8	100.0	100.0	100.0			

# Detailed Hydrocarbon Analysis Report

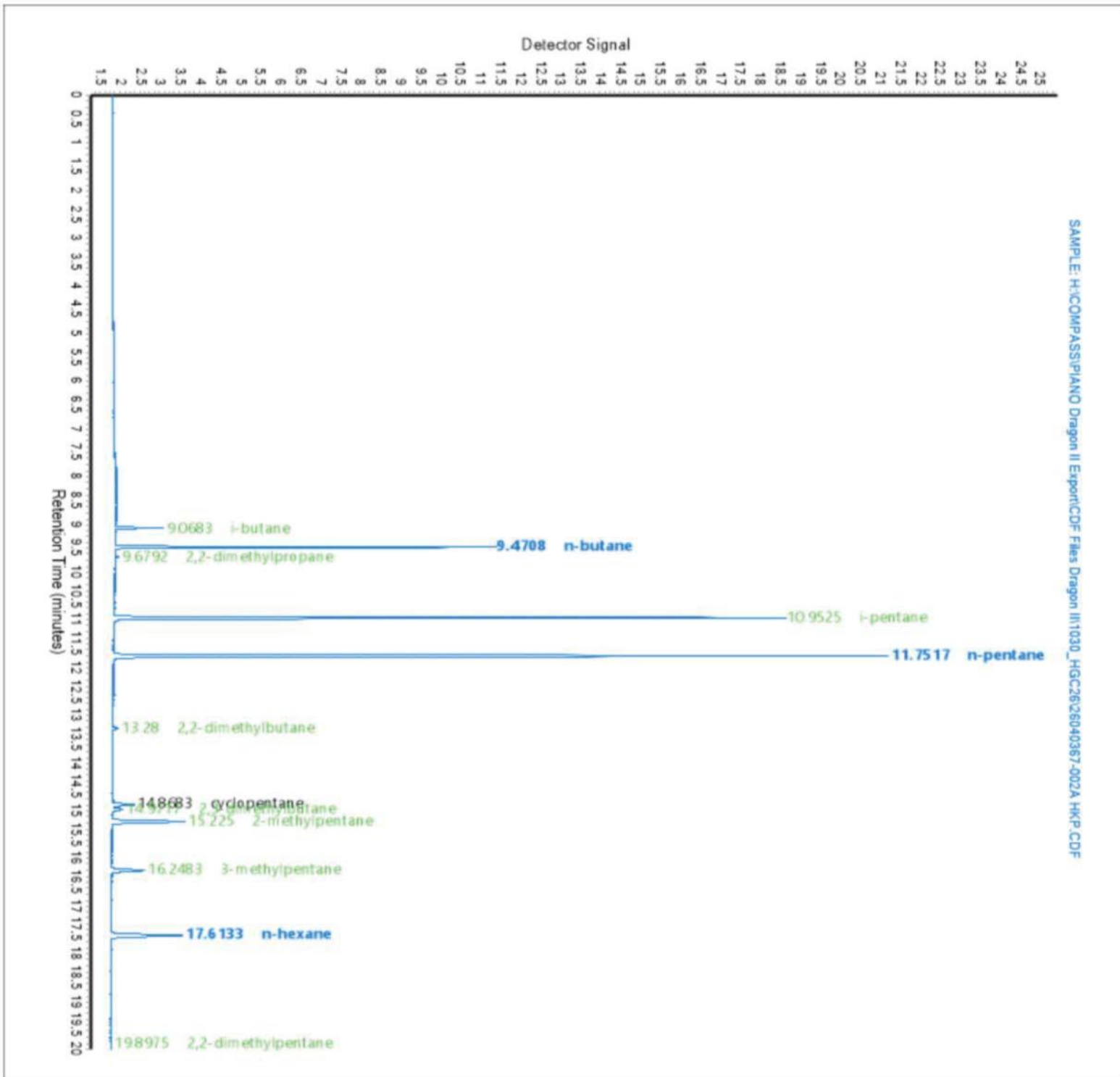
Operator: Marina Garcia

Raw File: H:\COMPASS\PIANO Dragon II Export\CDF Files Dragon II\1030\_HGC26\26040367-002A HKP.CDF

Sample File: H:\COMPASS\PIANO Dragon II Export\DHA Results Dragon II\26040367-002A HKP\_04162026\_1354.DHA \*

Reference File: H:\COMPASS\PIANO Dragon II Export\Reference DHAs Dragon II\19-01-199-01 GC26 NaphCond 03.26.26 HKP\_03272026\_1324.DHA

Sample Name: 26040367-002A HKP Analyzed: 16-Apr-26, 13:54:20 Acquired: 14-Apr-26 11:23:00 Peaks Processed: 33 Total Area: 1.8 Normalization Factor: 100%



SAMPLE: H:\COMPASS\PIANO Dragon II Export\CDF Files Dragon II\1030\_HGC26\26040367-002A HKP.CDF

# Detailed Hydrocarbon Analysis Report

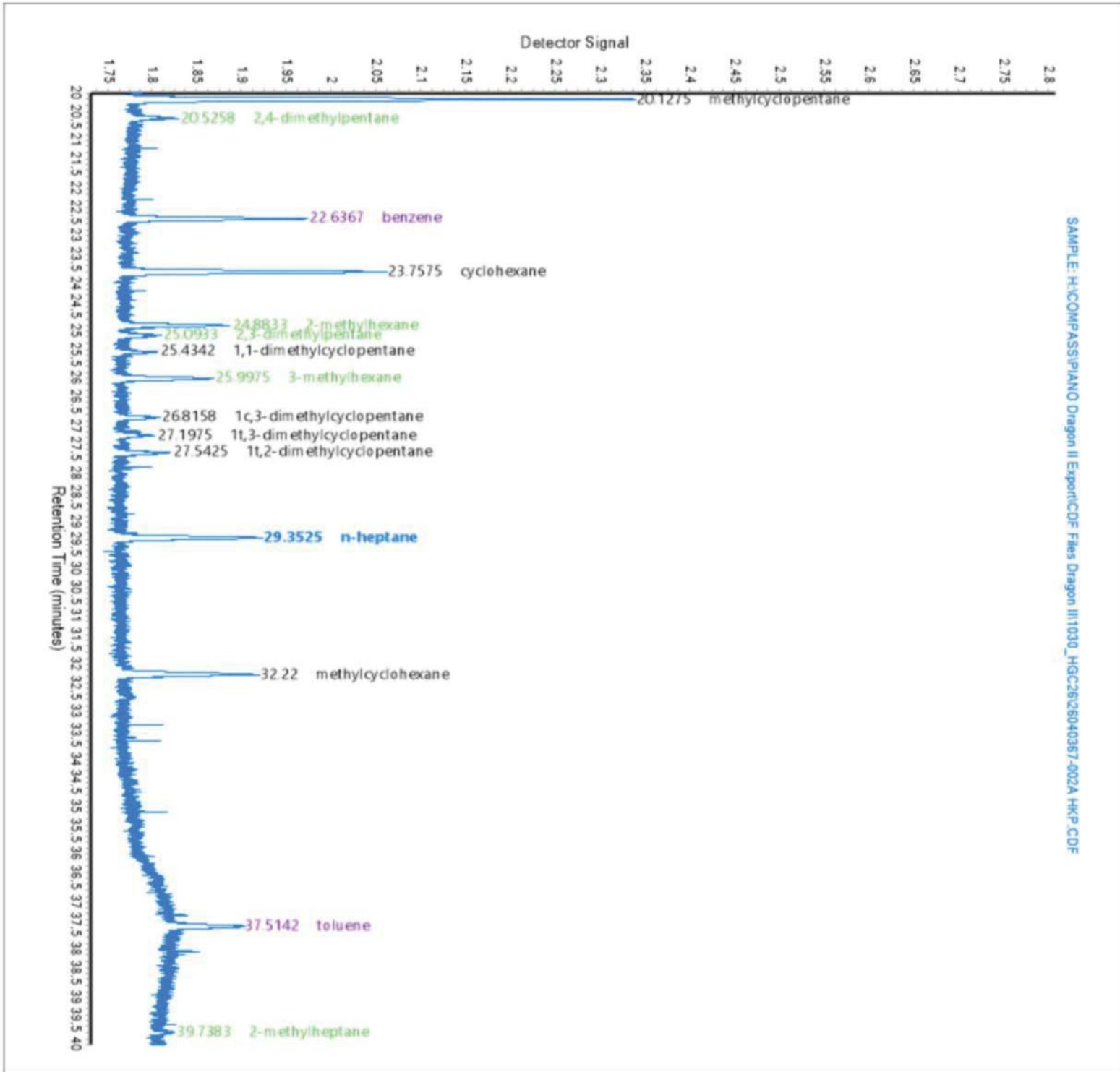
Operator: Marina Garcia

Raw File: H:\COMPASS\PIANO Dragon II Export\CDF Files Dragon II\1030\_HGC26\26040367-002A HKP.CDF

Sample File: H:\COMPASS\PIANO Dragon II Export\DHA Results Dragon II\26040367-002A HKP\_04162026\_1354.DHA \*

Reference File: H:\COMPASS\PIANO Dragon II Export\Reference DHAs Dragon II\19-01-199-01 GC26 NaphCond 03.26.26 HKP\_03272026\_1324.DHA

Sample Name: 26040367-002A HKP Analyzed: 16-Apr-26, 13:54:20 Acquired: 14-Apr-26 11:23:00 Peaks Processed: 33 Total Area: 1.8 Normalization Factor: 100%



SAMPLE: H:\COMPASS\PIANO Dragon II Export\CDF Files Dragon II\1030\_HGC26\26040367-002A HKP.CDF

# Detailed Hydrocarbon Analysis Report

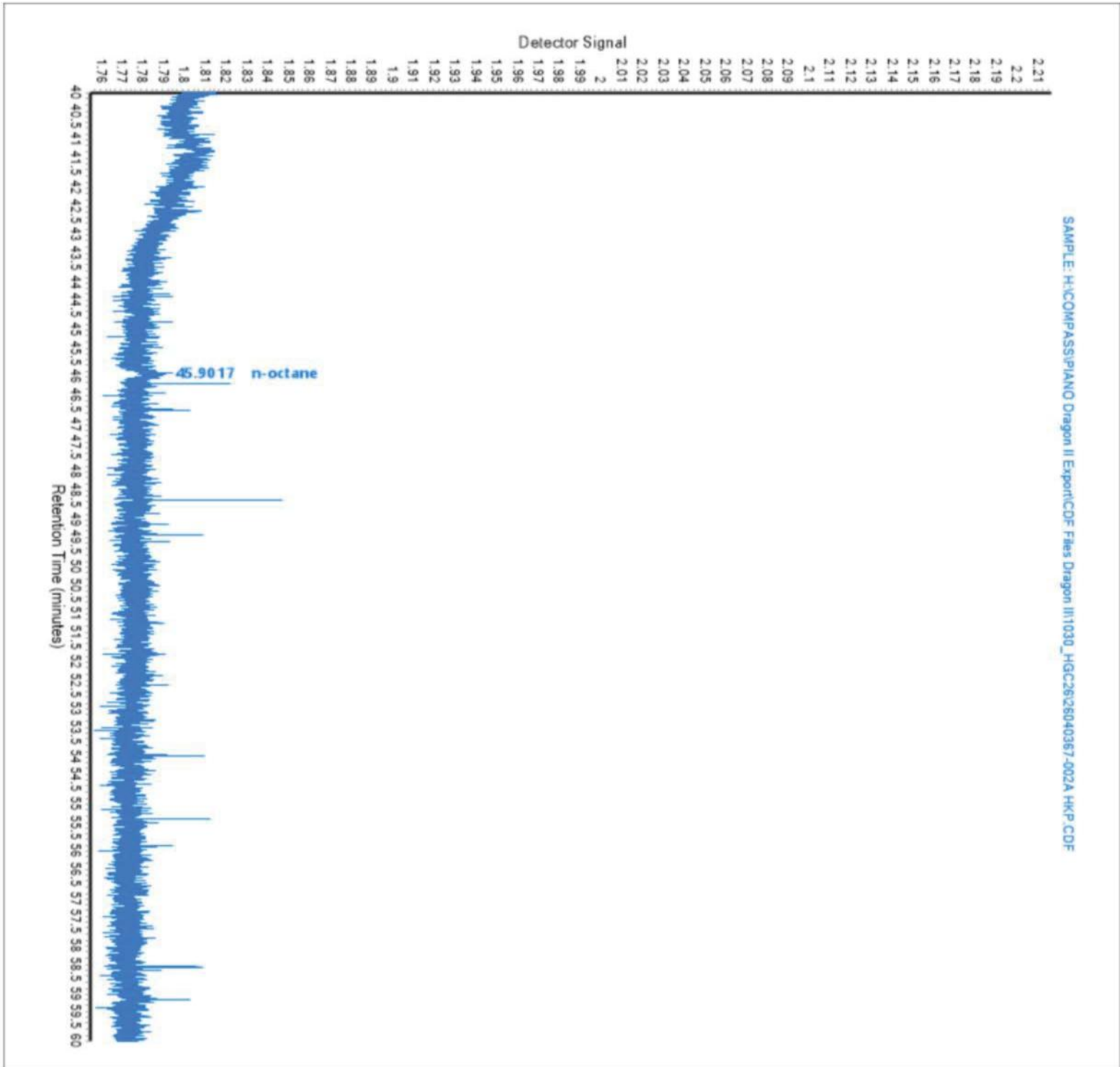
Operator: Marina Garcia

Raw File: H:\COMPASS\PIANO Dragon II Export\CDF Files Dragon II\1030\_HGC26\26040367-002A HKP.CDF

Sample File: H:\COMPASS\PIANO Dragon II Export\DHA Results Dragon II\26040367-002A HKP\_04162026\_1354.DHA \*

Reference File: H:\COMPASS\PIANO Dragon II Export\Reference DHAs Dragon II\19-01-199-01 GC26 NaphCond 03.26.26 HKP\_03272026\_1324.DHA

Sample Name: 26040367-002A HKP Analyzed: 16-Apr-26, 13:54:20 Acquired: 14-Apr-26 11:23:00 Peaks Processed: 33 Total Area: 1.8 Normalization Factor: 100%



SAMPLE: H:\COMPASS\PIANO Dragon II Export\CDF Files Dragon II\1030\_HGC26\26040367-002A HKP.CDF

# Detailed Hydrocarbon Analysis Report

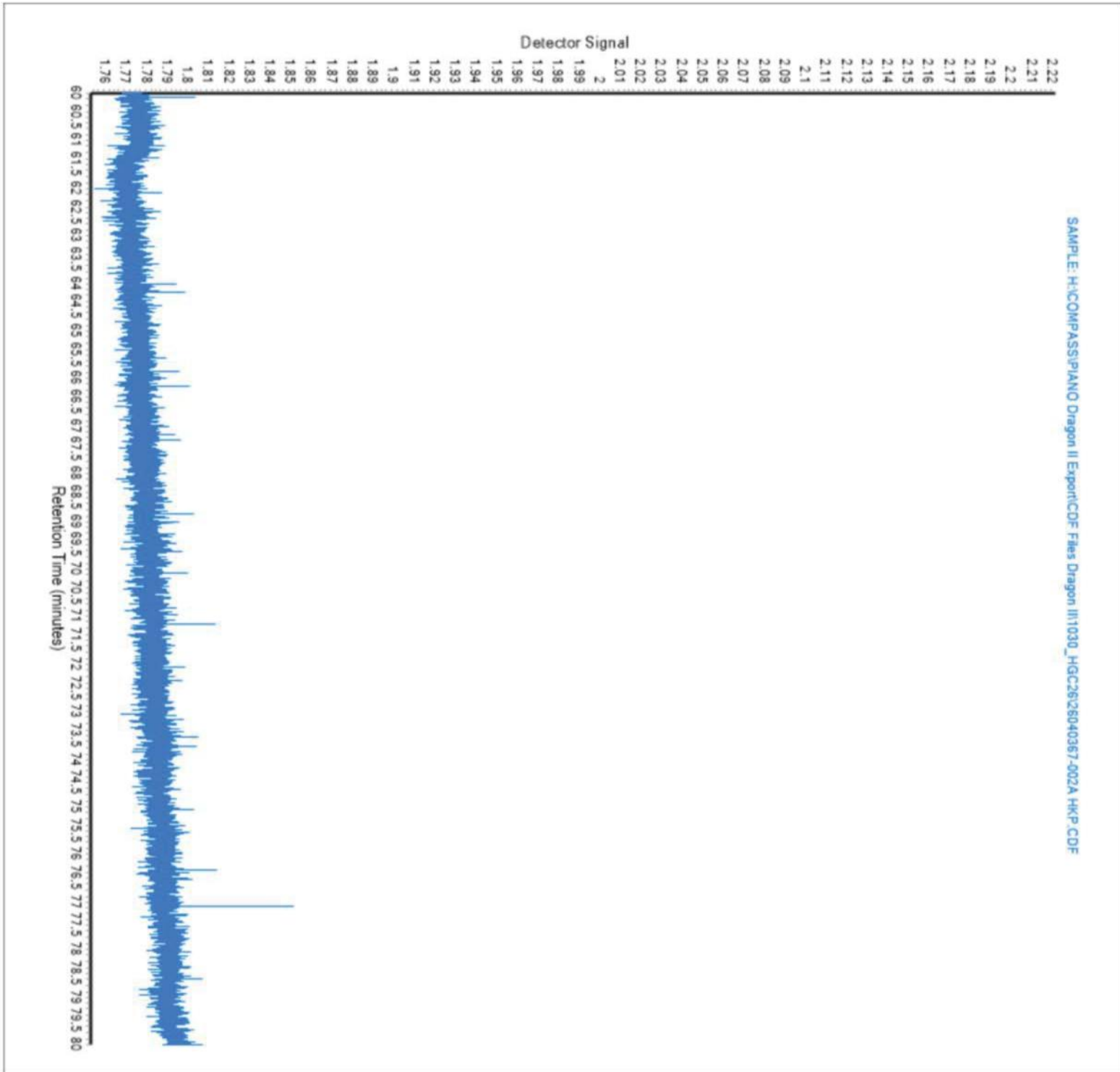
Operator: Marina Garcia

Raw File: H:\COMPASS\PIANO Dragon II Export\CDF Files Dragon II\1030\_HGC26\26040367-002A HKP.CDF

Sample File: H:\COMPASS\PIANO Dragon II Export\DHA Results Dragon II\26040367-002A HKP\_04162026\_1354.DHA \*

Reference File: H:\COMPASS\PIANO Dragon II Export\Reference DHAs Dragon II\19-01-199-01 GC26 NaphCond 03.26.26 HKP\_03272026\_1324.DHA

Sample Name: 26040367-002A HKP Analyzed: 16-Apr-26, 13:54:20 Acquired: 14-Apr-26 11:23:00 Peaks Processed: 33 Total Area: 1.8 Normalization Factor: 100%



# Detailed Hydrocarbon Analysis Report

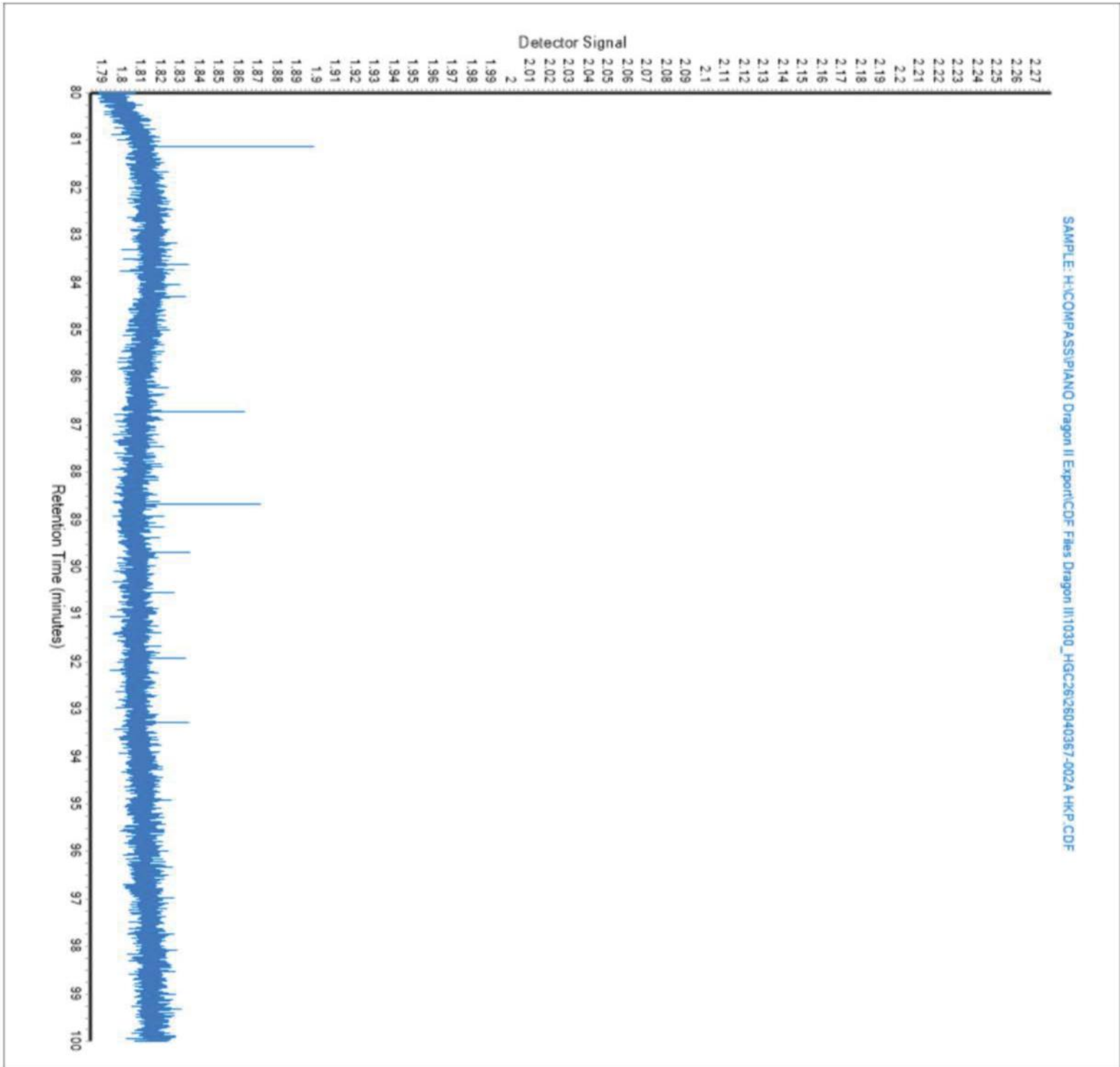
Operator: Marina Garcia

Raw File: H:\COMPASS\PIANO Dragon II Export\CDF Files Dragon II\1030\_HGC26\26040367-002A HKP.CDF

Sample File: H:\COMPASS\PIANO Dragon II Export\DHA Results Dragon II\26040367-002A HKP\_04162026\_1354.DHA \*

Reference File: H:\COMPASS\PIANO Dragon II Export\Reference DHAs Dragon II\19-01-199-01 GC26 NaphCond 03.26.26 HKP\_03272026\_1324.DHA

Sample Name: 26040367-002A HKP Analyzed: 16-Apr-26, 13:54:20 Acquired: 14-Apr-26 11:23:00 Peaks Processed: 33 Total Area: 1.8 Normalization Factor: 100%



# Detailed Hydrocarbon Analysis Report

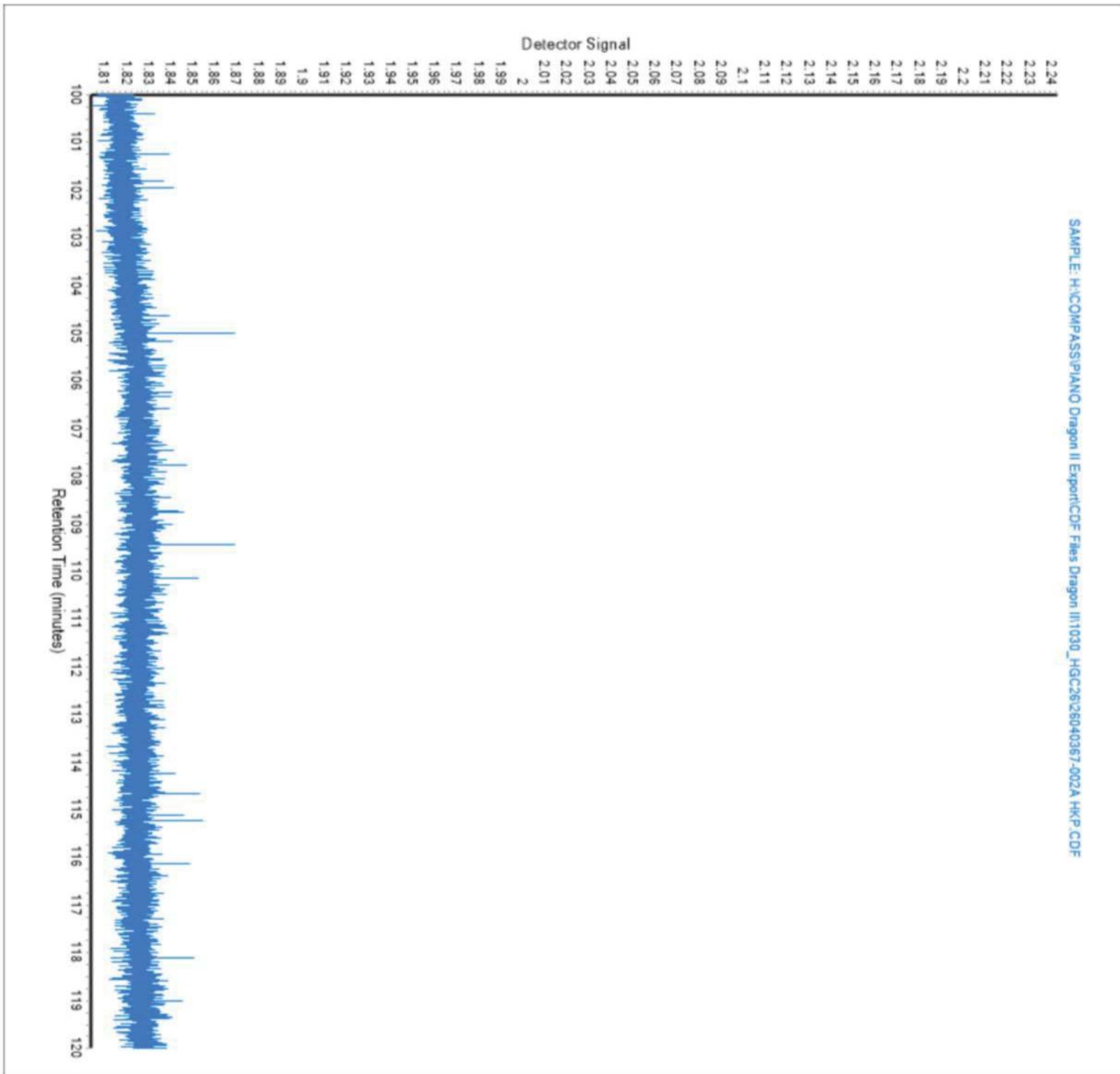
Operator: Marina Garcia

Raw File: H:\COMPASS\PIANO Dragon II Export\CDF Files Dragon II\1030\_HGC26\26040367-002A HKP.CDF

Sample File: H:\COMPASS\PIANO Dragon II Export\DHA Results Dragon II\26040367-002A HKP\_04162026\_1354.DHA \*

Reference File: H:\COMPASS\PIANO Dragon II Export\Reference DHAs Dragon II\19-01-199-01 GC26 NaphCond 03.26.26 HKP\_03272026\_1324.DHA

Sample Name: 26040367-002A HKP Analyzed: 16-Apr-26, 13:54:20 Acquired: 14-Apr-26 11:23:00 Peaks Processed: 33 Total Area: 1.8 Normalization Factor: 100%



# Detailed Hydrocarbon Analysis Report

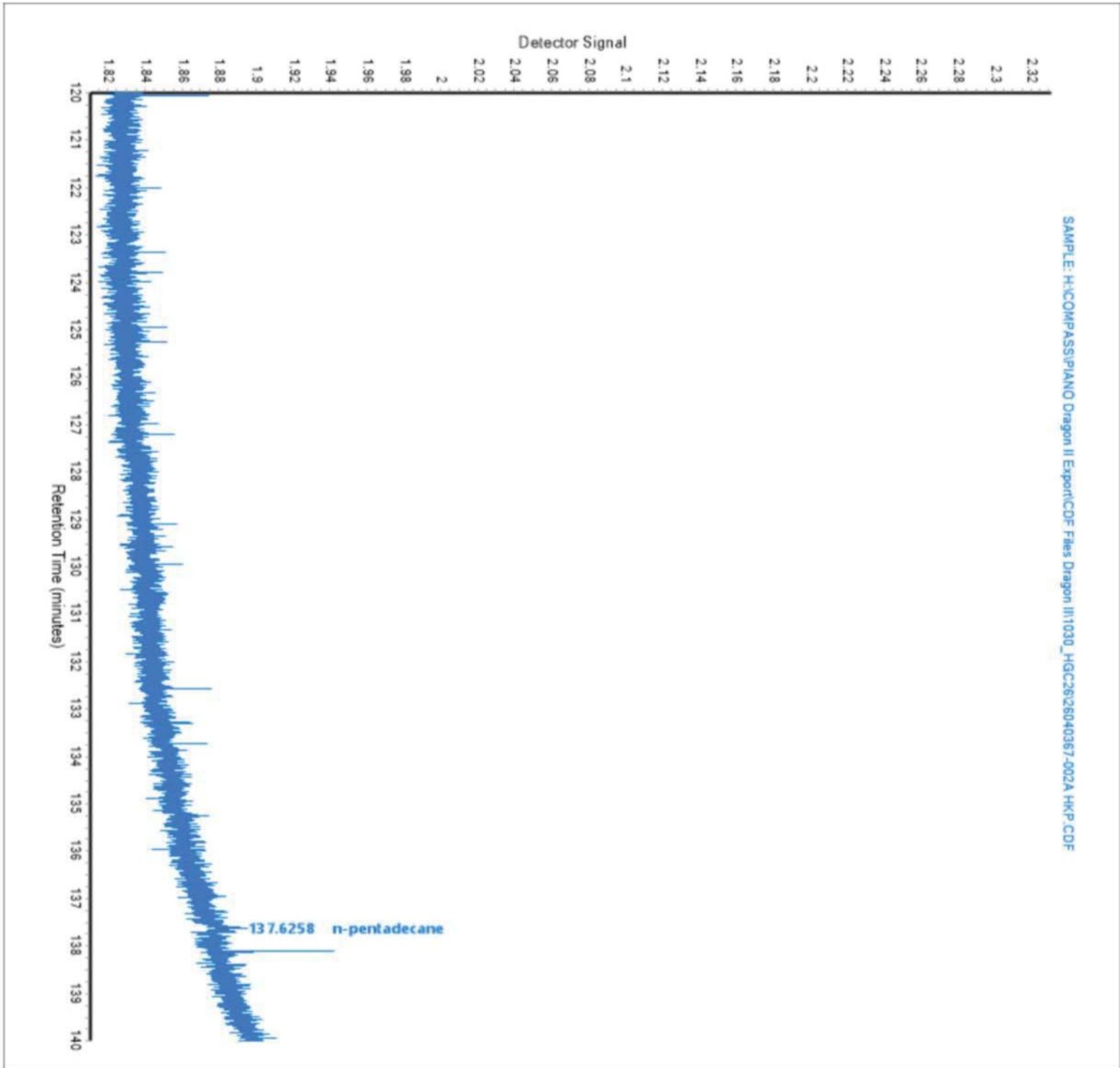
Operator: Marina Garcia

Raw File: H:\COMPASS\PIANO Dragon II Export\CDF Files Dragon II\1030\_HGC26\26040367-002A HKP.CDF

Sample File: H:\COMPASS\PIANO Dragon II Export\DHA Results Dragon II\26040367-002A HKP\_04162026\_1354.DHA \*

Reference File: H:\COMPASS\PIANO Dragon II Export\Reference DHAs Dragon II\19-01-199-01 GC26 NaphCond 03.26.26 HKP\_03272026\_1324.DHA

Sample Name: 26040367-002A HKP Analyzed: 16-Apr-26, 13:54:20 Acquired: 14-Apr-26 11:23:00 Peaks Processed: 33 Total Area: 1.8 Normalization Factor: 100%



# Detailed Hydrocarbon Analysis Report

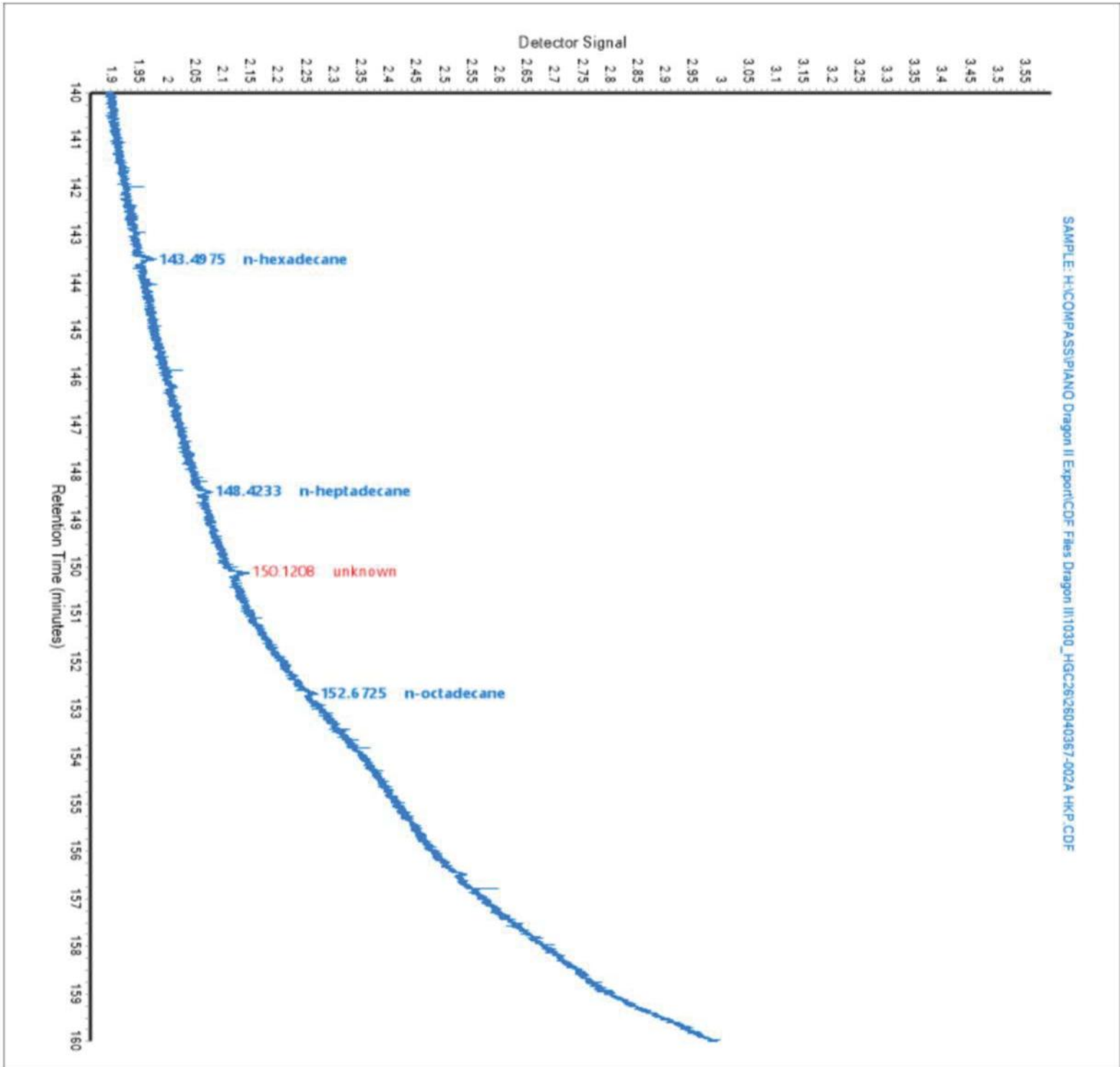
Operator: Marina Garcia

Raw File: H:\COMPASS\PIANO Dragon II Export\CDF Files Dragon II\1030\_HGC26\26040367-002A HKP.CDF

Sample File: H:\COMPASS\PIANO Dragon II Export\DHA Results Dragon II\26040367-002A HKP\_04162026\_1354.DHA \*

Reference File: H:\COMPASS\PIANO Dragon II Export\Reference DHAs Dragon II\19-01-199-01 GC26 NaphCond 03.26.26 HKP\_03272026\_1324.DHA

Sample Name: 26040367-002A HKP Analyzed: 16-Apr-26, 13:54:20 Acquired: 14-Apr-26 11:23:00 Peaks Processed: 33 Total Area: 1.8 Normalization Factor: 100%



SAMPLE: H:\COMPASS\PIANO Dragon II Export\CDF Files Dragon II\1030\_HGC26\26040367-002A HKP.CDF

# Detailed Hydrocarbon Analysis Report

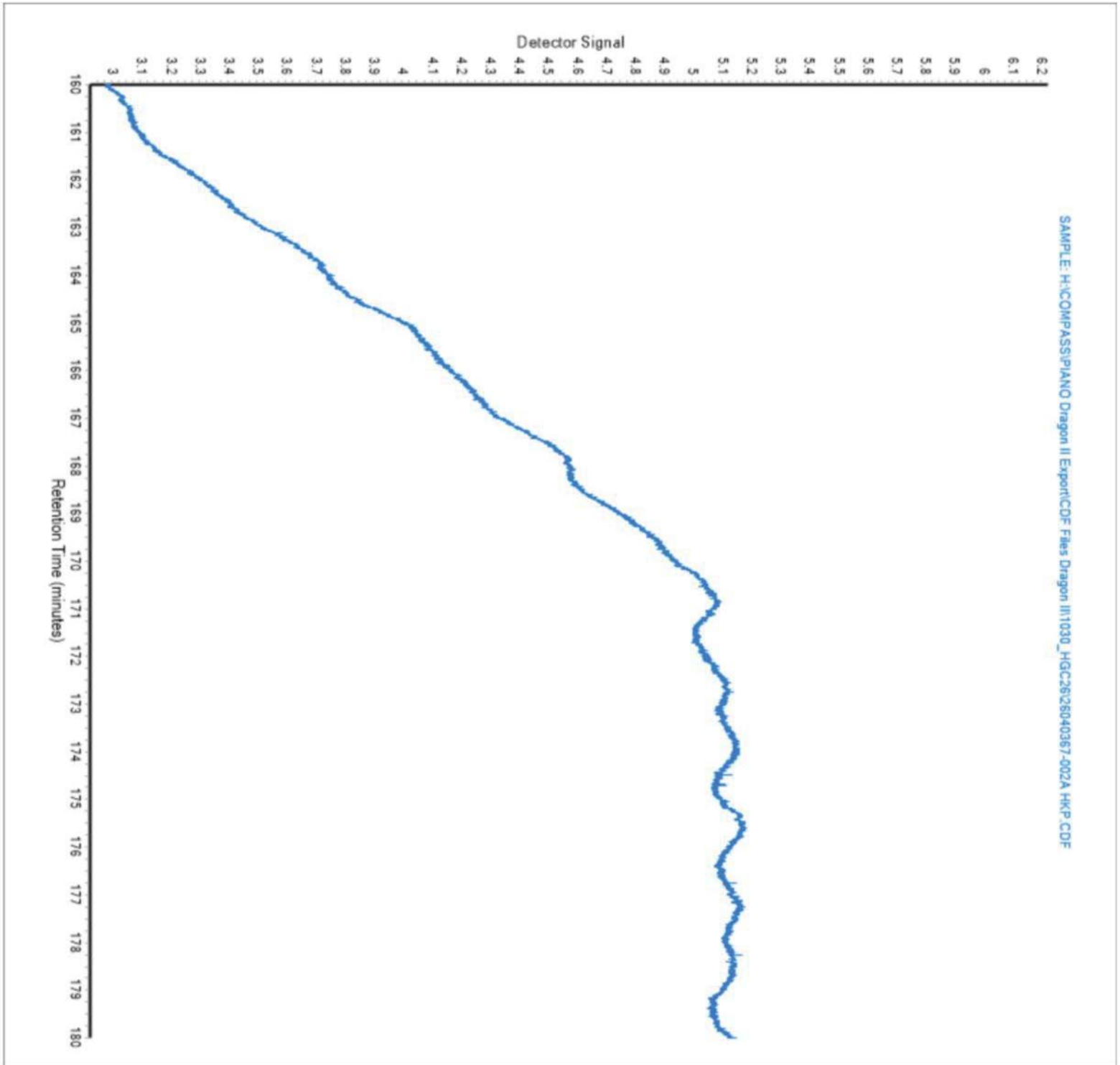
Operator: Marina Garcia

Raw File: H:\COMPASS\PIANO Dragon II Export\CDF Files Dragon II\1030\_HGC26\26040367-002A HKP.CDF

Sample File: H:\COMPASS\PIANO Dragon II Export\DHA Results Dragon II\26040367-002A HKP\_04162026\_1354.DHA \*

Reference File: H:\COMPASS\PIANO Dragon II Export\Reference DHAs Dragon II\19-01-199-01 GC26 NaphCond 03.26.26 HKP\_03272026\_1324.DHA

Sample Name: 26040367-002A HKP Analyzed: 16-Apr-26, 13:54:20 Acquired: 14-Apr-26 11:23:00 Peaks Processed: 33 Total Area: 1.8 Normalization Factor: 100%



# Detailed Hydrocarbon Analysis Report

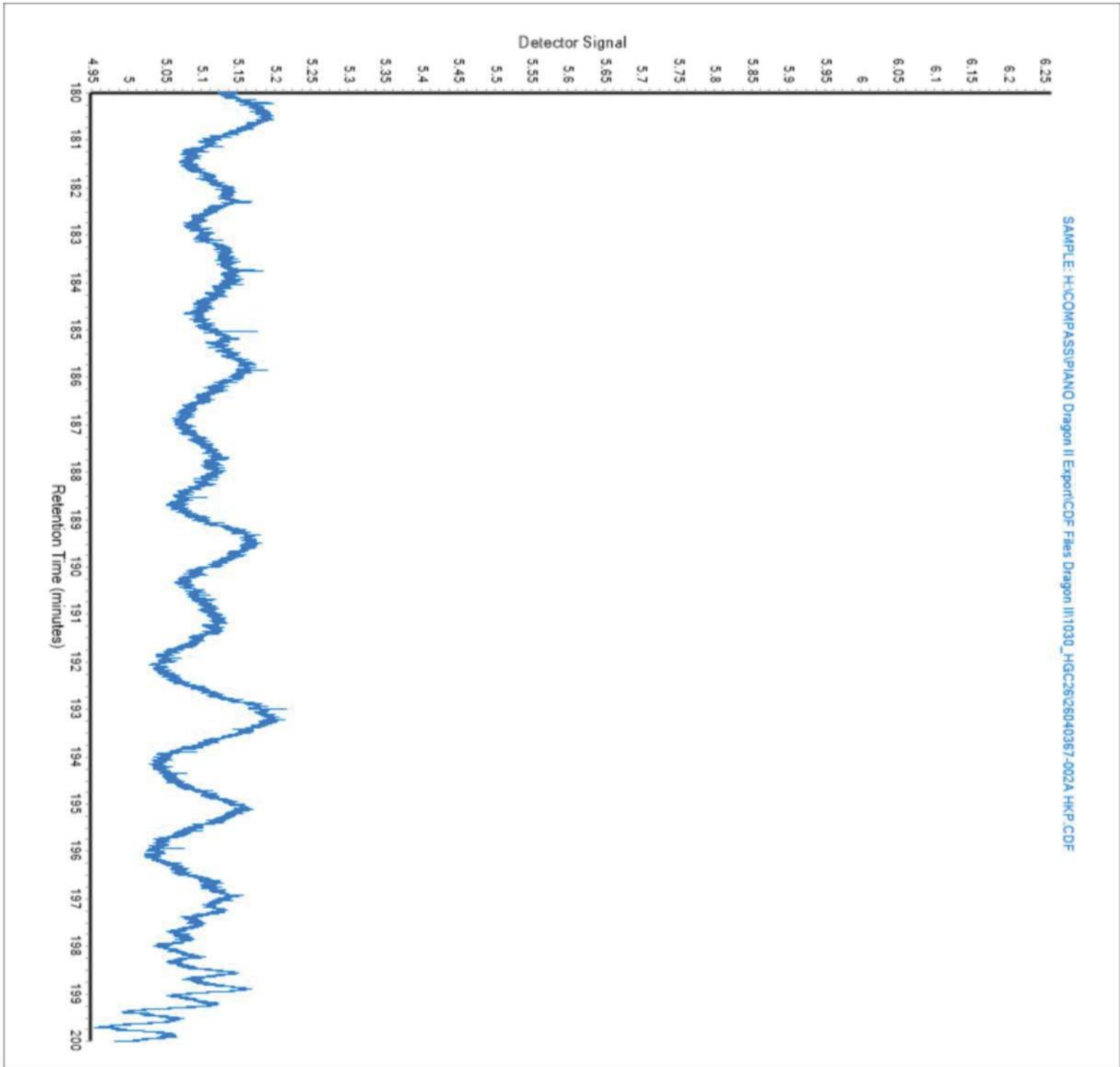
Operator: Marina Garcia

Raw File: H:\COMPASS\PIANO Dragon II Export\CDF Files Dragon II\1030\_HGC26\26040367-002A HKP.CDF

Sample File: H:\COMPASS\PIANO Dragon II Export\DHA Results Dragon II\26040367-002A HKP\_04162026\_1354.DHA \*

Reference File: H:\COMPASS\PIANO Dragon II Export\Reference DHAs Dragon II\19-01-199-01 GC26 NaphCond 03.26.26 HKP\_03272026\_1324.DHA

Sample Name: 26040367-002A HKP Analyzed: 16-Apr-26, 13:54:20 Acquired: 14-Apr-26 11:23:00 Peaks Processed: 33 Total Area: 1.8 Normalization Factor: 100%



# Detailed Hydrocarbon Analysis Report

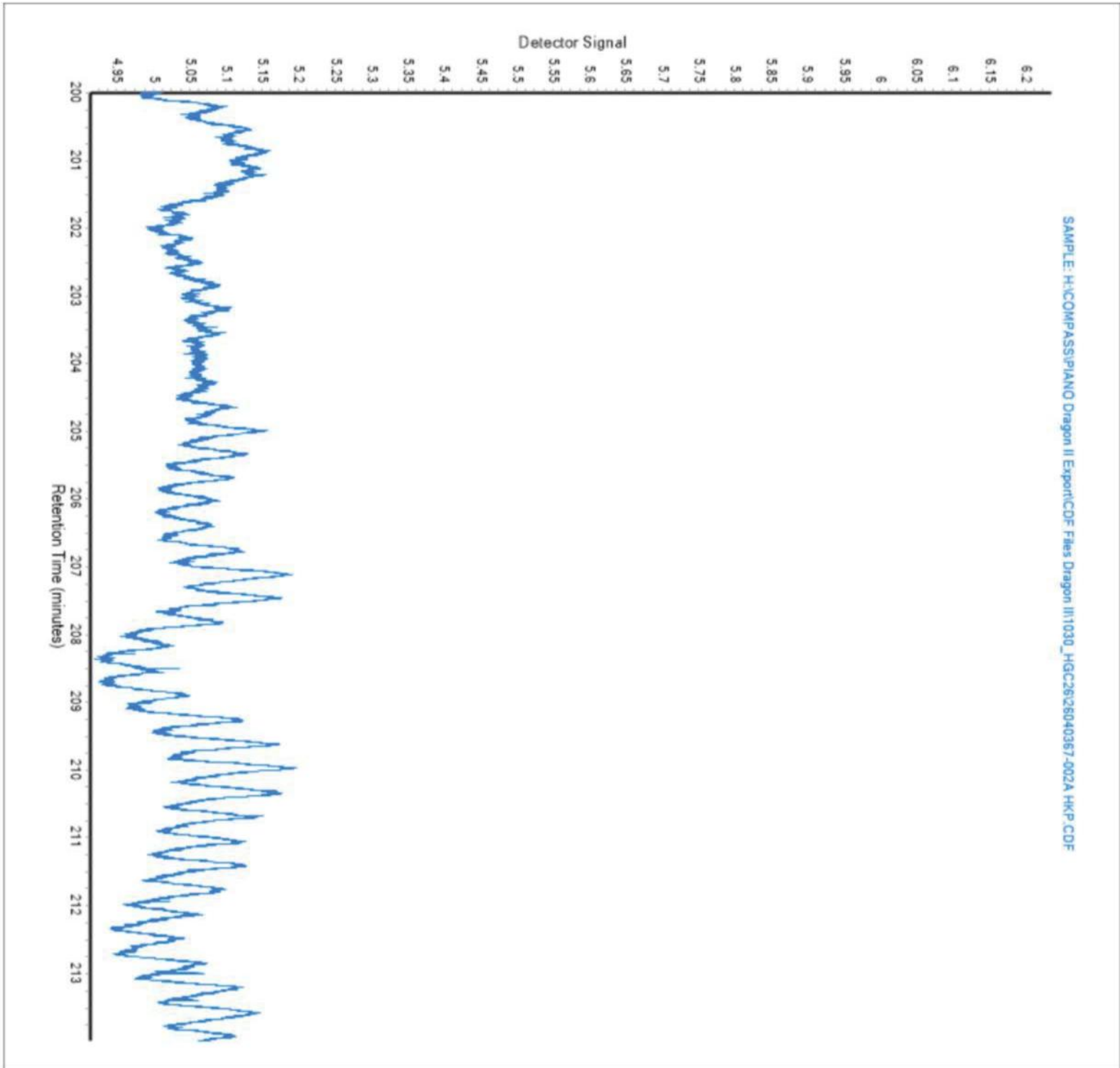
Operator: Marina Garcia

Raw File: H:\COMPASS\PIANO Dragon II Export\CDF Files Dragon II\1030\_HGC26\26040367-002A HKP.CDF

Sample File: H:\COMPASS\PIANO Dragon II Export\DHA Results Dragon II\26040367-002A HKP\_04162026\_1354.DHA \*

Reference File: H:\COMPASS\PIANO Dragon II Export\Reference DHAs Dragon II\19-01-199-01 GC26 NaphCond 03.26.26 HKP\_03272026\_1324.DHA

Sample Name: 26040367-002A HKP Analyzed: 16-Apr-26, 13:54:20 Acquired: 14-Apr-26 11:23:00 Peaks Processed: 33 Total Area: 1.8 Normalization Factor: 100%



DIG-043483  
DIG-043484

Send Data to:	Send Invoice to (if different):	Additional Information:
Name: Laurel Anderson, Nikki Graber	Name: Luke Arnsbarger	AFE #:
Company: ECMC	Company: Larnsberger@digforenergy.com	Project: Spill ID 493177
Address: 1120	Address: Dolan Integration Group	PO #: GAE PHAA* 056
City, State: Denver, CO 80203	City, State:	Location: Hwy 52 & CR19 (G) 2/2026
Phone: 970-404-9911	Phone:	Sampled By: Brett Pavlus, Alex Ahmadian
Email: laural.anderson@state.co.us, nikkigraber@state.co.us	Email:	API #:

Turnaround Time\*\*:

Standard (≤ 10 Business days)     Rush (≤ 5 Business days)     Expedited Rush (≤ 3 Business days)

Container Number	Sample Identification	Date Sampled	Time	Sample Type*	Gas Composition	d13C of Methane (C1)	d13C of Ethane (C2)	d13C of Propane+ (C3+)	d13C of Carbon Dioxide (CO2)	dD of Methane (C1)	Whole Oil Gas Chromatography (with ASTM D1250) (API Gravity)	ASTM D1250 (API Gravity)	d18O and dD Isotopes of Water	RSK 175 Dissolved Gas Quantification	d13C of Dissolved Inorganic Carbon (DIC)	Other (Specify):
1	<del>DCP</del> Hattenburg Pipeline	4/1/26	13:17	Other							<input checked="" type="checkbox"/>					
1	DCP CR19 Condensate Line	4/1/26	13:35	Other												
				Other												
				Other												
				Other												
				Other												
				Other												
				Other												
				Other												
				Other												

Chain of Custody Record      Comments:

Relinquished by Signature	Company	Date	Time	Received by Signature	Company	Date	Time
	ECMC	4/1/26	16:00		DIG	4/1/26	16:03
	DIG	4/1/26	08:30		SPL	4/2/26	8:30
					SPL-HOUSTON	4/10/26	12:00 VDS

\*Gas composition vs RSK-175 - Gas composition is a basic analysis of the concentration (ppm) of gases within the headspace of the sample (headspace is created at the lab). RSK-175 is a specific analysis technique combined with calculations to give the total dissolved gas of each species in the water sample (mg/L). Why one or the other? Gas composition gives us a quick, general look at relative concentrations and ratios (e.g., gas wetness). RSK-175 gives us an exact total of gas present in the sample (headspace and dissolved in the water). Questions? Give us a call at 303-531-2030.

\*\* Rush and Expedited Rush turnaround time analysis will incur additional costs at 2x and 3x the standard turnaround time pricing.

★ Whole OIL GAS CHROMATOGRAPHY W/ PRISTANE / PHYTANE RATIO

Workorder: 26041347 (\$1768.00) ClientCode: DOLAN-INT-GRP Project: DIG

Report To:

Invoice To:

Received: 04/02/26 WO Due Date: 04/16/26

Logged By: srobinson on 04/08/26 11:54

PM: Sarah Ortega

Frac.	Testcode	Location	Station Name	Station # /Sample Pt	Sample Date	H2S PPM Press Temp Field	Cylinder #	Date Ran	GC #	Ran By
001A	GC-PIANO	Hwy 52 & CR 19 (G) 2/2026	DCP Wattenburg Pipeline	Spill ID 493177	04/01/2026		043483			
002A	GC-PIANO	Hwy 52 & CR19 (G) 2/2026	DCP CR19 Condensate Line	Spill ID 493177	04/01/2026		043484			