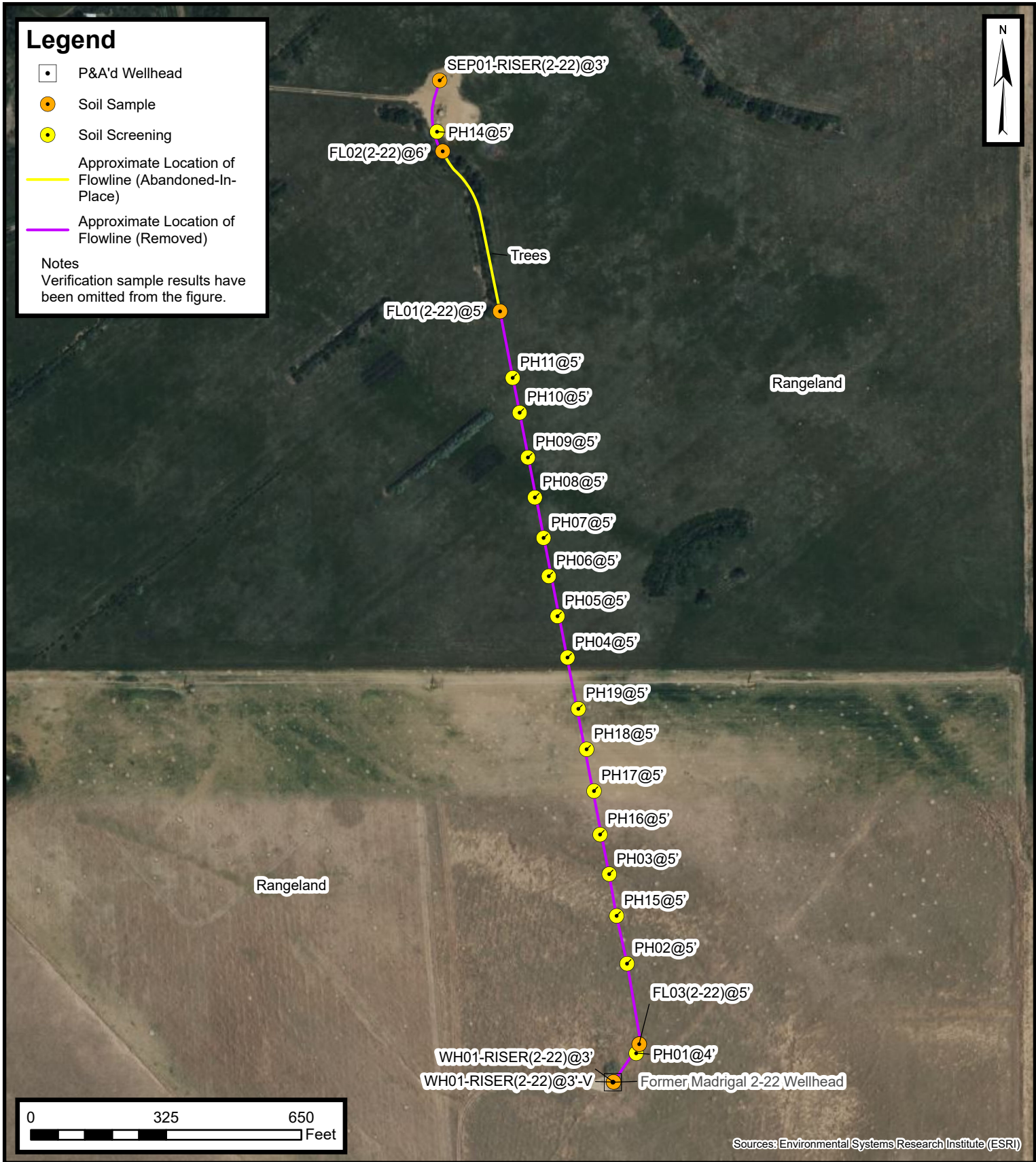


Legend

- P&A'd Wellhead
- Soil Sample
- Soil Screening
- Approximate Location of Flowline (Abandoned-In-Place)
- Approximate Location of Flowline (Removed)

Notes
Verification sample results have been omitted from the figure.



Default Folder: C:\Users\Margan\OneDrive - ENSOLUM, LLC\Ensolium GIS\0 - Projects\Kerr-McGee Oil & Gas Onshore, LP\09A1417818 - Madrigal 2-22 Wellhead



Flowline Excavation Site Map

Madrigal 2-22 Flowline
Kerr-McGee Oil & Gas Onshore, LP
NESW SEC 22-T1N-R66W
Weld County, CO

Project Number: 09A1417818

FIGURE

2