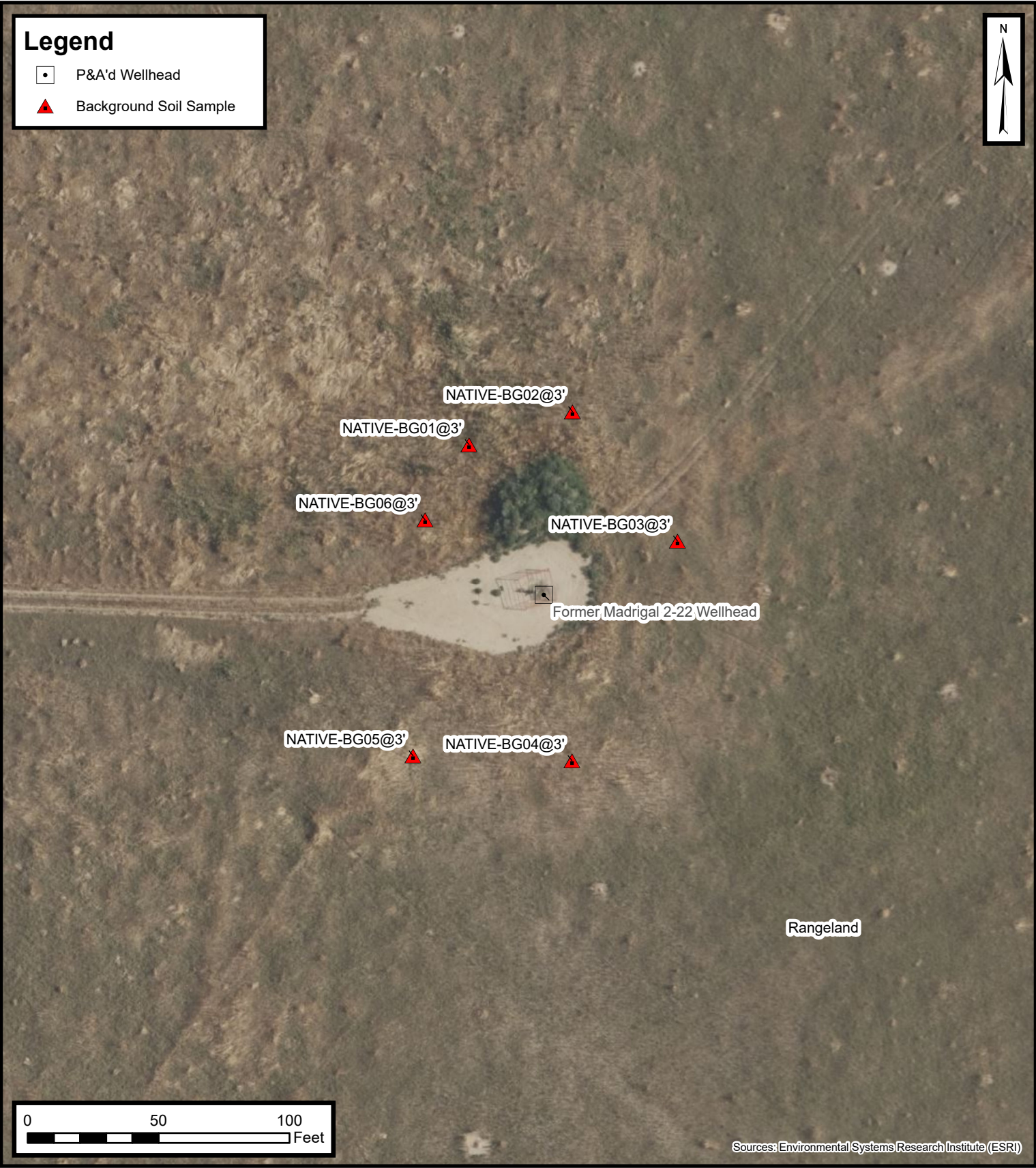


Legend

- P&A'd Wellhead
- ▲ Background Soil Sample



Default Folder: C:\Users\Maregan\OneDrive - ENSOLUM, LLC\Ensolium GIS\0 - Projects\Kerr-McGee Oil & Gas Onshore, LP\09A1417818 - Madrigal 2-22 Wellhead

Sources: Environmental Systems Research Institute (ESRI)



Background Sample Location Map

Madrigal 2-22 Wellhead
Kerr-McGee Oil & Gas Onshore, LP
NESW SEC 22-T1N-R66W
Weld County, CO

Project Number: 09A1417818

FIGURE
3