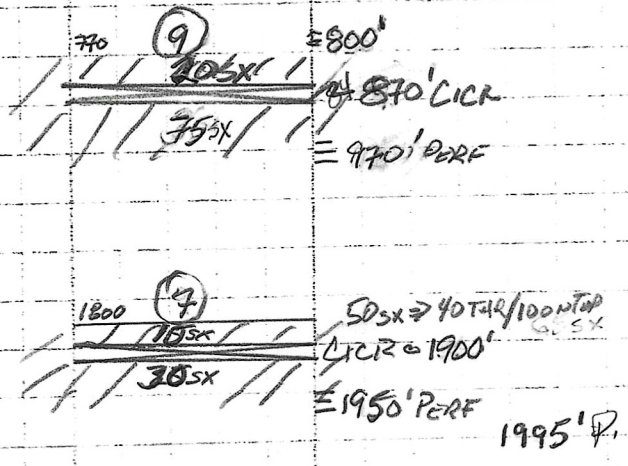


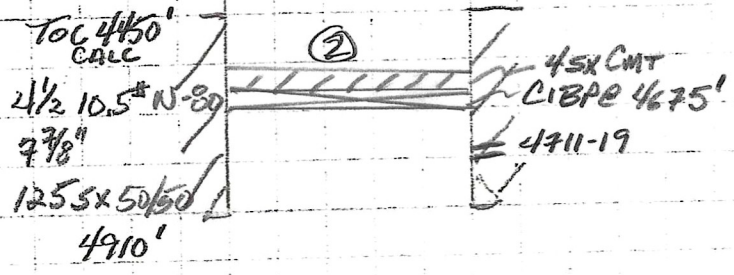
APPR'D WBD  
30 APR 26

STRACHAN EXPLORATION, INC  
STATE G#1  
API 05-011-06092  
SPUD 06/24/79  
STR ENE 24-21S-48W  
COUNTY BENT  
LOCID 321224  
EXCUTED 206345  
LAT/LNG 38.21235 / -102.71572  
~~STATE~~ LEASE 72/28935  
MORROW 4711-4719'



REVISED  
PROPOSED PROCEDURE 15 APR 26  
GET GPS COORDS!  
RUN BH TEST RECORD & REPORT TO SDR

- 1) MIRA, PULL TBG
- 2) PU CIBP, RICH & SET @ 4675' + 4SX
- 3) LOAD HOLE PTEST 250PSI
- 4)
- 5) PERF 1995'  
970' & 700'  
560'
- 6) PU CIRC @ 1900'
- 7) MIX & PUMP 50SX = 40 THRU / 10 ON TOOL J
- 8) PU CIRC & SET @ 870'
- 9) MIX & PUMP 95SX 75 THRU TOOL / 20SX ON T
- 10) MIX & CIRC 168SX TO SURF  
LEAVE CSG FULL



PLUGS ARE AS APPR IN 2022

WAIT A MINIMUM OF 5 DAYS TO  
CUT & CAP  
PICS TO SDR