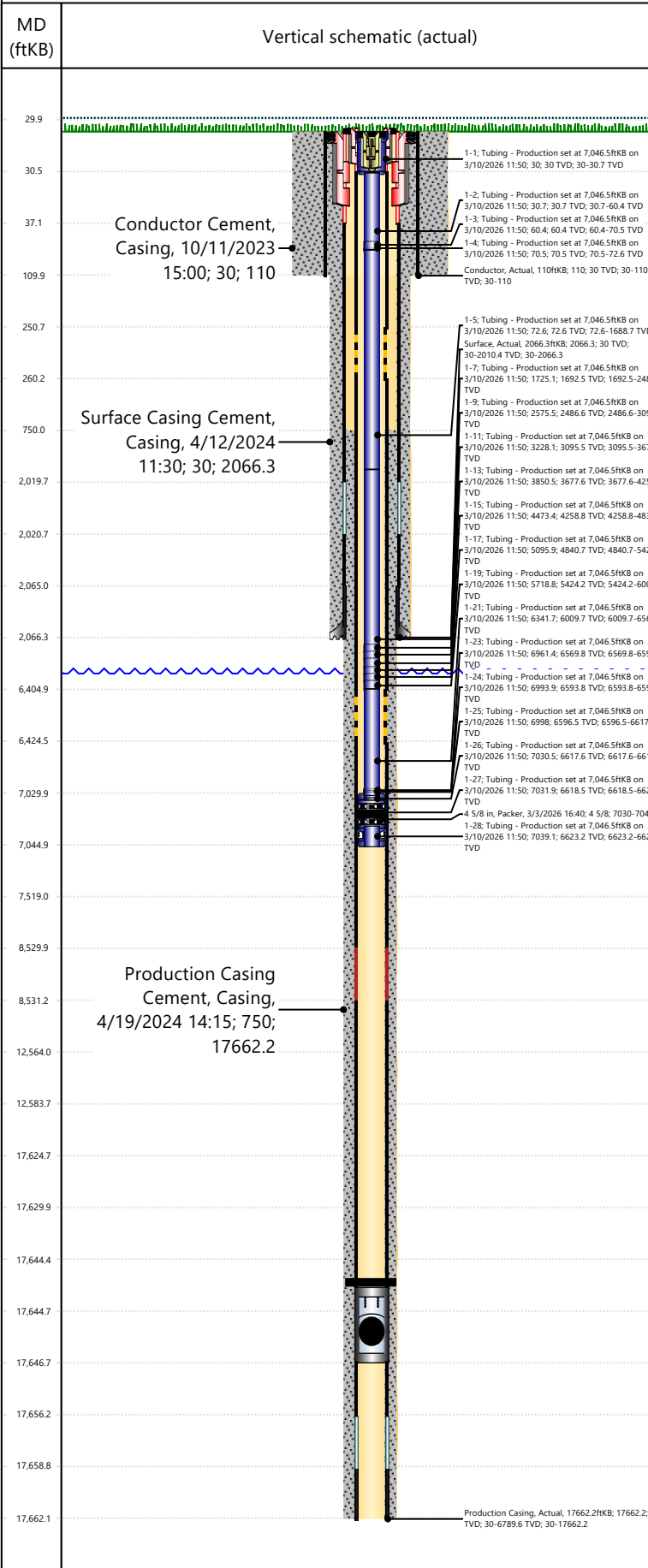




# Rockies Current Wellbore - Regulatory

Well Name: GUTTERSEN Y12-773

## Original Hole [Land]



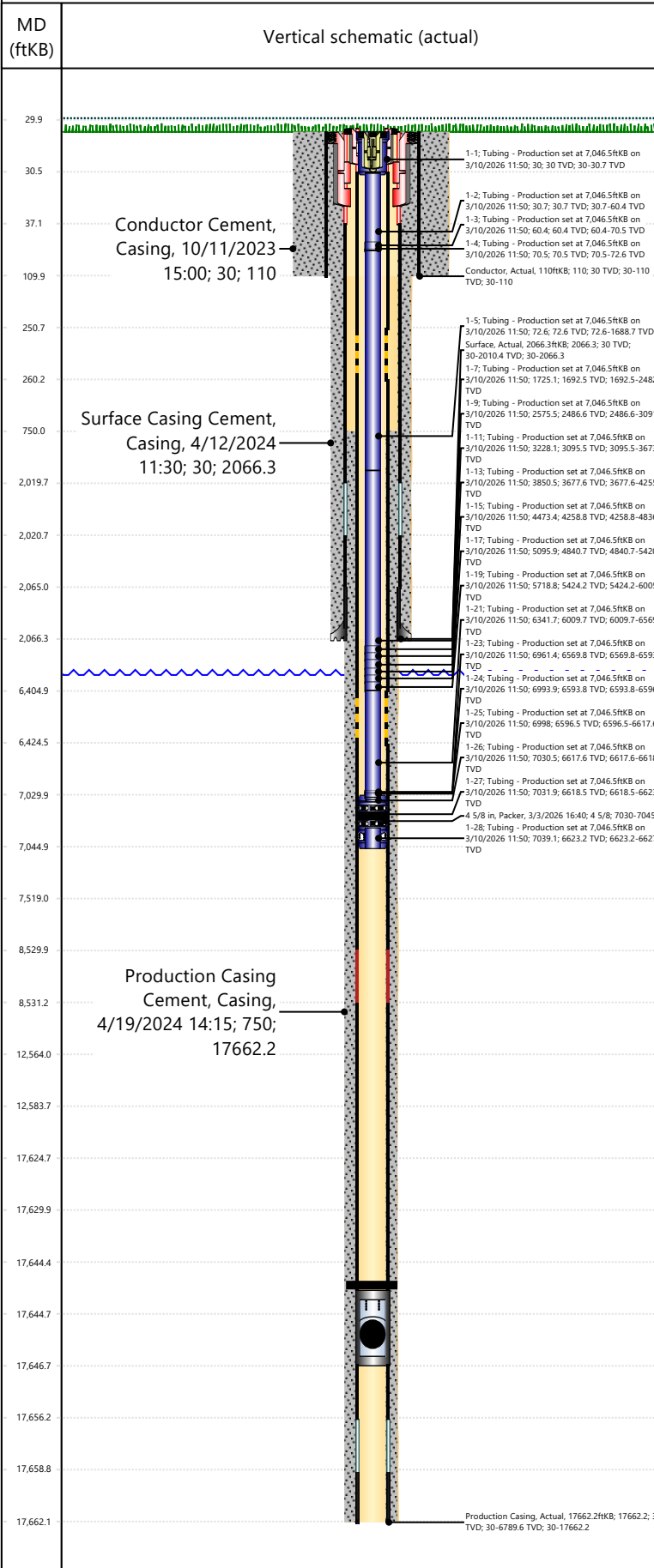
Well Header									
Surface UW/I		Business Unit		Gov Auth Dist		Prod Tree Loc			
0512352449		Rockies				Land			
Orig. KB to Gnd (ft)		Original Spud Date		Abandon Date		Well Sub-Status		High Pres	
30.00		4/12/2024				PR		N	
Comment									
Operator will log one (1) additional well during the first rig occupation with open-hole resistivity log with gamma-ray log from the kick-off point into the surface casing for the stratigraphically deepest wells on each side of the pad for a total of two wells logged. Alternative Logging Program: One of the first wells drilled on the pad during the first rig occupation will be logged with open-hole resistivity log with gamma-ray log from the kick-off point into the surface casing for one of the stratigraphically deepest wells on the pad.									
Geologic Horizons									
Formation Name						Final Top MD (ftKB)			
Nio A Chalk						7,115.0			
Formation Name						Final Top MD (ftKB)			
Parkman						4,058.0			
Formation Name						Final Top MD (ftKB)			
Shannon						5,287.0			
Formation Name						Final Top MD (ftKB)			
Sussex						4,315.0			
Congressional Location									
Quarter 3	Quarter 4	Section	Township	Twnshp N/S	Range	Rng E/W Dir	Latitude (°)	Longitude (°)	
SW	SE	12	2	N	64	W	40.147324	-104.498741	
Wellbore Sections									
Section Des		Hole Size (in)		Top Depth (ftKB)		Btm Depth (ftKB)			
Pilot Hole		26		30.0		110.0			
Surface		13 1/2		110.0		2,076.0			
Production		8 1/2		2,076.0		17,673.0			
Casing Strings									
Csg Des		Run Date		OD (in)		Wt/Len (lb/ft)		Grade	
Conductor		10/11/2023		16		36.94		A-52A	
Surface		4/12/2024		9 5/8		36.00		J-55	
Production Casing		4/19/2024		5 1/2		17.00		P110	
Top Depth (MD) (ftKB)		Set Depth (MD) (ftKB)							
30		110							
2066.3		17662.2							
30		17662.2							
Cement									
Des		Start Date		Top (ftKB)		Btm (ftKB)			
Conductor Cement		10/11/2023		30.0		110.0			
Surface Casing Cement		4/12/2024		30.0		2,066.3			
Production Casing Cement		4/19/2024		750.0		17,662.2			
Stim/Frac Summary									
Min Top Depth (ftKB)				Max Btm Depth (ftKB)					
7,519.0				17,630.0					
Perforations									
Linked Zone		Date		Top Depth (ftKB)		Bottom Depth (ftKB)			
NIOBRARA, Original Hole		2/6/2026 01:22		7,518.9		7,519.9			
Linked Zone		Date		Top Depth (ftKB)		Bottom Depth (ftKB)			
NIOBRARA, Original Hole		2/6/2026 01:21		7,547.3		7,548.3			
Linked Zone		Date		Top Depth (ftKB)		Bottom Depth (ftKB)			
NIOBRARA, Original Hole		2/6/2026 01:21		7,584.7		7,585.7			
Linked Zone		Date		Top Depth (ftKB)		Bottom Depth (ftKB)			
NIOBRARA, Original Hole		2/6/2026 01:21		7,610.1		7,611.1			
Linked Zone		Date		Top Depth (ftKB)		Bottom Depth (ftKB)			
NIOBRARA, Original Hole		2/6/2026 01:21		7,639.0		7,640.0			
Linked Zone		Date		Top Depth (ftKB)		Bottom Depth (ftKB)			
NIOBRARA, Original Hole		2/6/2026 01:20		7,667.5		7,668.6			
Linked Zone		Date		Top Depth (ftKB)		Bottom Depth (ftKB)			
NIOBRARA, Original Hole		2/6/2026 01:20		7,706.3		7,707.3			
Linked Zone		Date		Top Depth (ftKB)		Bottom Depth (ftKB)			
NIOBRARA, Original Hole		2/6/2026 01:19		7,732.4		7,733.4			
Linked Zone		Date		Top Depth (ftKB)		Bottom Depth (ftKB)			
NIOBRARA, Original Hole		2/5/2026 16:09		7,759.1		7,760.1			



# Rockies Current Wellbore - Regulatory

Well Name: GUTTERSEN Y12-773

## Original Hole [Land]



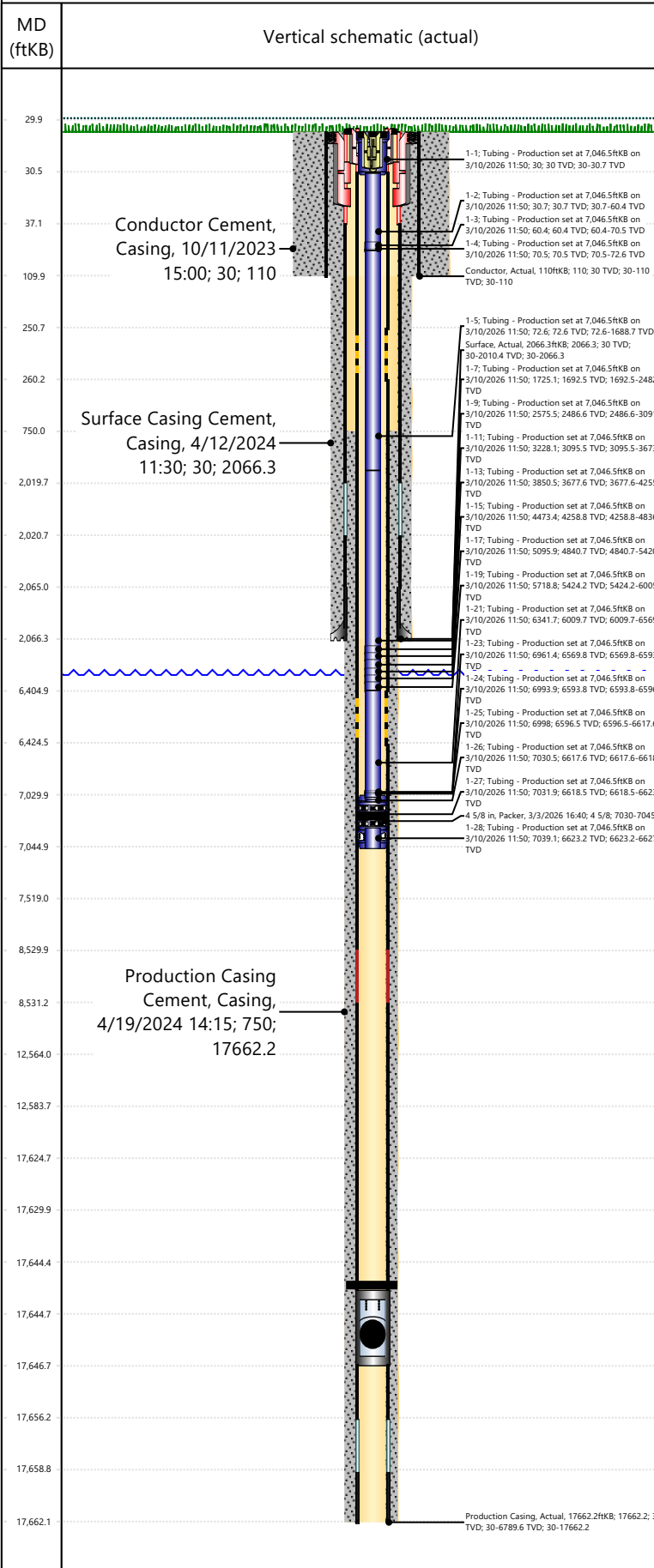
Perforations			
Linked Zone	Date	Top Depth (ftKB)	Bottom Depth (ftKB)
NIOBRARA, Original Hole	2/5/2026 16:09	7,794.7	7,795.7
NIOBRARA, Original Hole	2/5/2026 16:09	7,818.5	7,819.5
NIOBRARA, Original Hole	2/5/2026 16:09	7,855.6	7,856.6
NIOBRARA, Original Hole	2/5/2026 16:08	7,882.9	7,884.0
NIOBRARA, Original Hole	2/5/2026 16:08	7,900.4	7,901.4
NIOBRARA, Original Hole	2/5/2026 16:06	7,938.6	7,939.6
NIOBRARA, Original Hole	2/5/2026 16:06	7,972.3	7,973.3
NIOBRARA, Original Hole	2/5/2026 05:43	7,996.1	7,997.1
NIOBRARA, Original Hole	2/5/2026 05:42	8,020.2	8,021.2
NIOBRARA, Original Hole	2/5/2026 05:42	8,055.3	8,056.3
NIOBRARA, Original Hole	2/5/2026 05:42	8,079.5	8,080.5
NIOBRARA, Original Hole	2/5/2026 05:42	8,114.6	8,115.6
NIOBRARA, Original Hole	2/5/2026 05:41	8,145.9	8,146.9
NIOBRARA, Original Hole	2/5/2026 05:41	8,178.1	8,179.1
NIOBRARA, Original Hole	2/5/2026 05:41	8,205.1	8,206.1
NIOBRARA, Original Hole	2/4/2026 17:09	8,249.9	8,250.9
NIOBRARA, Original Hole	2/4/2026 17:08	8,273.1	8,274.1
NIOBRARA, Original Hole	2/4/2026 17:08	8,307.8	8,308.8
NIOBRARA, Original Hole	2/4/2026 17:08	8,337.3	8,338.3
NIOBRARA, Original Hole	2/4/2026 17:08	8,361.7	8,362.7
NIOBRARA, Original Hole	2/4/2026 17:07	8,398.1	8,399.1
NIOBRARA, Original Hole	2/4/2026 17:07	8,425.2	8,426.2
NIOBRARA, Original Hole	2/4/2026 17:06	8,456.4	8,457.4
NIOBRARA, Original Hole	2/4/2026 06:33	8,487.9	8,488.9
NIOBRARA, Original Hole	2/4/2026 06:33	8,520.0	8,521.0



# Rockies Current Wellbore - Regulatory

Well Name: GUTTERSEN Y12-773

## Original Hole [Land]



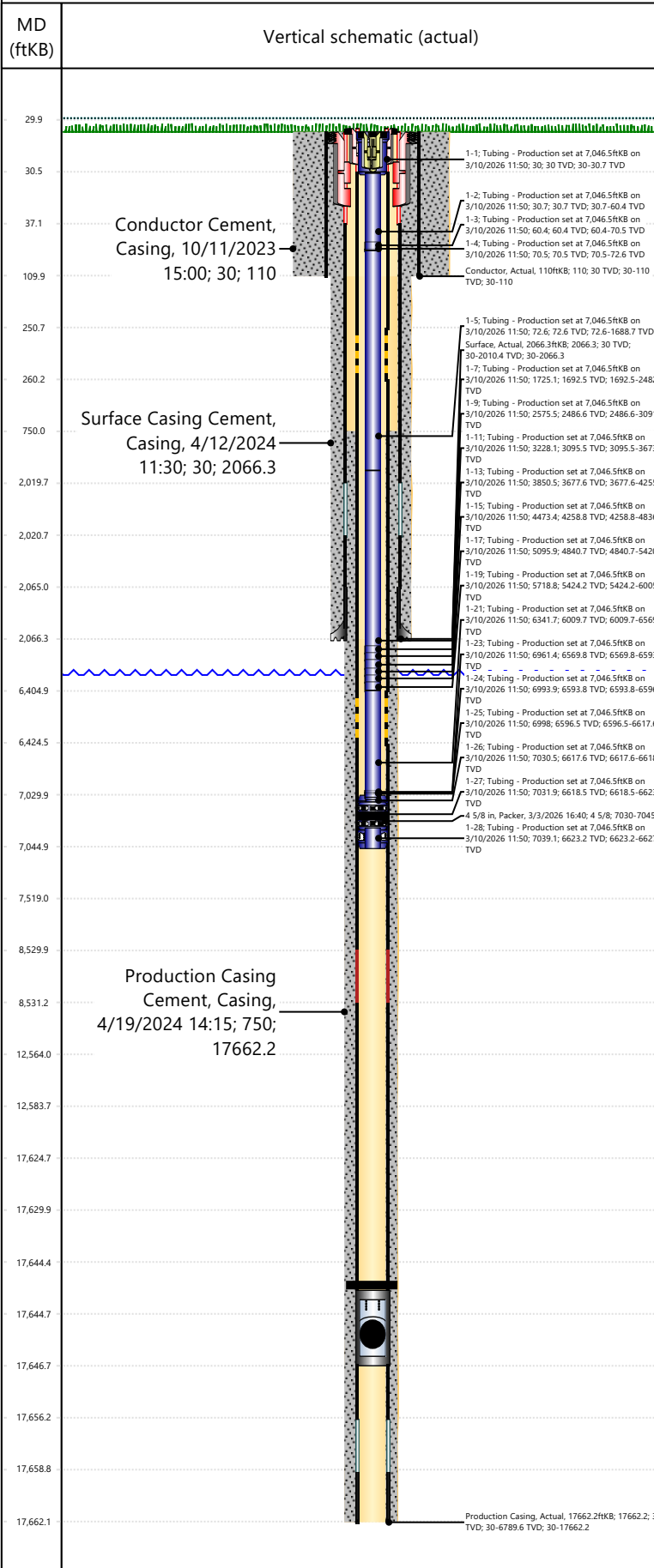
Perforations			
Linked Zone	Date	Top Depth (ftKB)	Bottom Depth (ftKB)
NIOBRARA, Original Hole	2/4/2026 06:33	8,548.8	8,549.8
NIOBRARA, Original Hole	2/4/2026 06:32	8,567.6	8,568.6
NIOBRARA, Original Hole	2/4/2026 06:32	8,609.7	8,610.7
NIOBRARA, Original Hole	2/4/2026 06:32	8,640.1	8,641.1
NIOBRARA, Original Hole	2/4/2026 06:32	8,666.2	8,667.2
NIOBRARA, Original Hole	2/4/2026 06:31	8,697.9	8,698.9
NIOBRARA, Original Hole	2/3/2026 20:23	8,731.2	8,732.2
NIOBRARA, Original Hole	2/3/2026 20:23	8,762.4	8,763.4
NIOBRARA, Original Hole	2/3/2026 20:23	8,790.6	8,791.6
NIOBRARA, Original Hole	2/3/2026 20:22	8,820.4	8,821.4
NIOBRARA, Original Hole	2/3/2026 20:22	8,845.2	8,846.2
NIOBRARA, Original Hole	2/3/2026 20:22	8,883.3	8,884.3
NIOBRARA, Original Hole	2/3/2026 20:21	8,906.8	8,907.8
NIOBRARA, Original Hole	2/3/2026 20:21	8,939.5	8,940.5
NIOBRARA, Original Hole	2/3/2026 06:52	8,972.3	8,973.3
NIOBRARA, Original Hole	2/3/2026 06:51	9,004.4	9,005.4
NIOBRARA, Original Hole	2/3/2026 06:51	9,032.0	9,033.0
NIOBRARA, Original Hole	2/3/2026 06:51	9,059.5	9,060.5
NIOBRARA, Original Hole	2/3/2026 06:50	9,093.1	9,094.1
NIOBRARA, Original Hole	2/3/2026 06:50	9,122.1	9,123.1
NIOBRARA, Original Hole	2/3/2026 06:50	9,154.1	9,155.1
NIOBRARA, Original Hole	2/3/2026 06:49	9,180.6	9,181.7
NIOBRARA, Original Hole	2/2/2026 20:55	9,214.9	9,215.9
NIOBRARA, Original Hole	2/2/2026 20:54	9,244.5	9,245.5
NIOBRARA, Original Hole	2/2/2026 20:54	9,266.1	9,267.2



# Rockies Current Wellbore - Regulatory

Well Name: GUTTERSEN Y12-773

## Original Hole [Land]



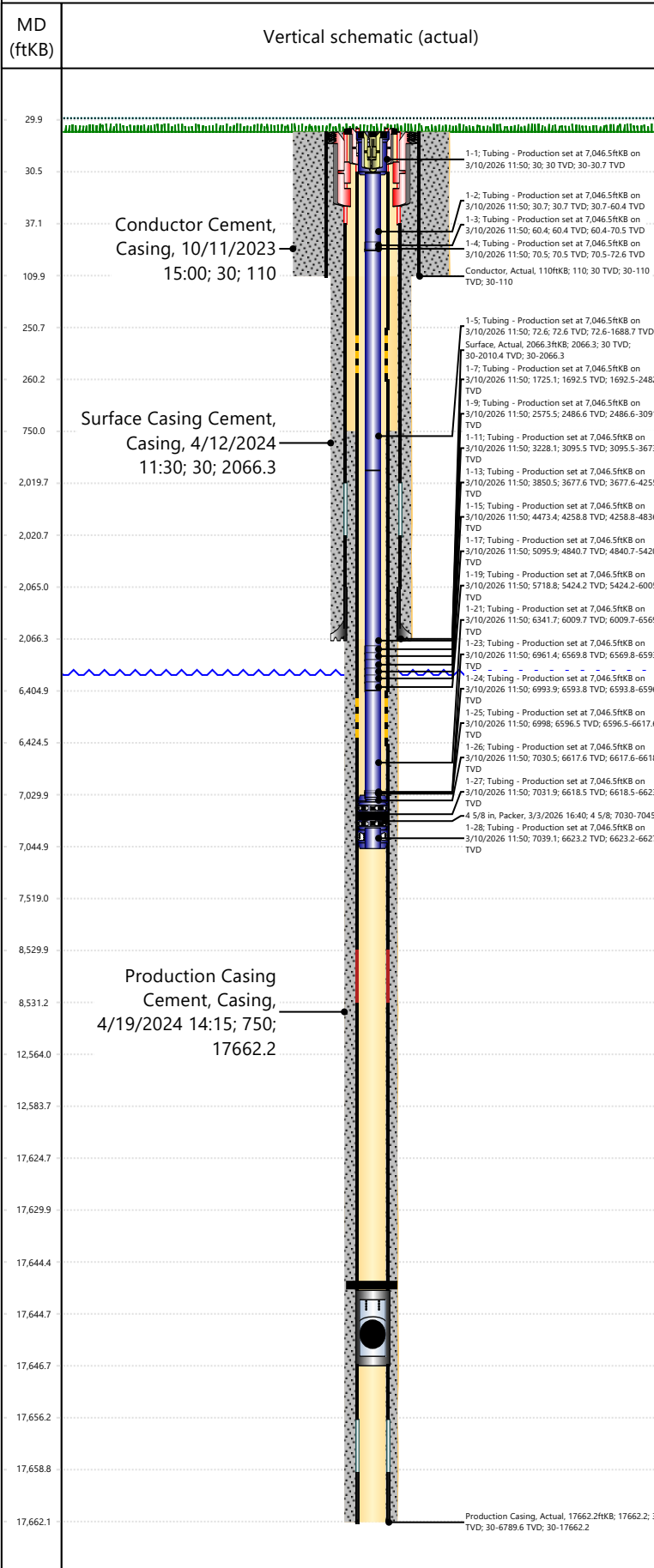
Perforations			
Linked Zone	Date	Top Depth (ftKB)	Bottom Depth (ftKB)
NIOBRARA, Original Hole	2/2/2026 20:54	9,303.2	9,304.2
NIOBRARA, Original Hole	2/2/2026 20:53	9,329.4	9,330.4
NIOBRARA, Original Hole	2/2/2026 20:53	9,364.4	9,365.5
NIOBRARA, Original Hole	2/2/2026 20:53	9,389.3	9,390.3
NIOBRARA, Original Hole	2/2/2026 20:52	9,420.8	9,421.8
NIOBRARA, Original Hole	2/2/2026 08:20	9,453.6	9,454.6
NIOBRARA, Original Hole	2/2/2026 08:19	9,485.2	9,486.2
NIOBRARA, Original Hole	2/2/2026 08:19	9,508.7	9,509.7
NIOBRARA, Original Hole	2/2/2026 08:19	9,534.5	9,535.5
NIOBRARA, Original Hole	2/2/2026 08:19	9,569.5	9,570.5
NIOBRARA, Original Hole	2/2/2026 08:18	9,605.8	9,606.8
NIOBRARA, Original Hole	2/2/2026 08:18	9,631.5	9,632.5
NIOBRARA, Original Hole	2/2/2026 08:18	9,663.4	9,664.4
NIOBRARA, Original Hole	2/1/2026 21:58	9,696.1	9,697.1
NIOBRARA, Original Hole	2/1/2026 21:58	9,727.7	9,728.7
NIOBRARA, Original Hole	2/1/2026 21:57	9,755.1	9,756.1
NIOBRARA, Original Hole	2/1/2026 21:57	9,786.7	9,787.7
NIOBRARA, Original Hole	2/1/2026 21:57	9,817.0	9,818.0
NIOBRARA, Original Hole	2/1/2026 21:56	9,847.2	9,848.2
NIOBRARA, Original Hole	2/1/2026 21:56	9,875.0	9,876.0
NIOBRARA, Original Hole	2/1/2026 21:56	9,904.6	9,905.6
NIOBRARA, Original Hole	2/1/2026 11:20	9,934.8	9,935.9
NIOBRARA, Original Hole	2/1/2026 11:20	9,961.0	9,962.0
NIOBRARA, Original Hole	2/1/2026 11:20	9,992.8	9,993.8
NIOBRARA, Original Hole	2/1/2026 11:20	10,033.1	10,034.1



# Rockies Current Wellbore - Regulatory

Well Name: GUTTERSEN Y12-773

## Original Hole [Land]



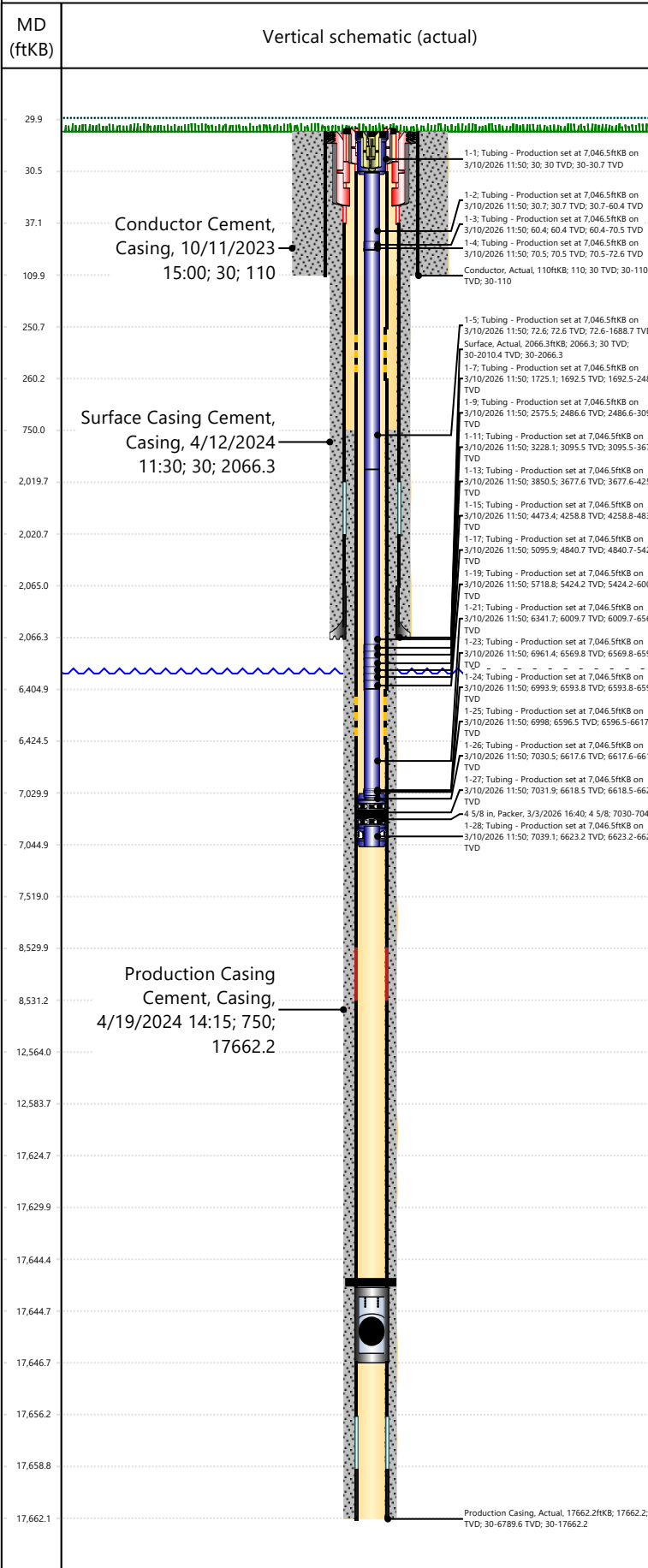
Perforations			
Linked Zone	Date	Top Depth (ftKB)	Bottom Depth (ftKB)
NIOBRARA, Original Hole	2/1/2026 11:19	10,051.0	10,052.0
NIOBRARA, Original Hole	2/1/2026 11:19	10,089.9	10,090.9
NIOBRARA, Original Hole	2/1/2026 11:19	10,121.2	10,122.2
NIOBRARA, Original Hole	2/1/2026 11:18	10,146.3	10,147.3
NIOBRARA, Original Hole	1/31/2026 23:28	10,179.9	10,180.9
NIOBRARA, Original Hole	1/31/2026 23:28	10,210.0	10,211.0
NIOBRARA, Original Hole	1/31/2026 23:27	10,237.1	10,238.1
NIOBRARA, Original Hole	1/31/2026 23:27	10,267.6	10,268.6
NIOBRARA, Original Hole	1/31/2026 23:27	10,293.8	10,294.8
NIOBRARA, Original Hole	1/31/2026 23:26	10,323.9	10,324.9
NIOBRARA, Original Hole	1/31/2026 23:26	10,358.9	10,359.9
NIOBRARA, Original Hole	1/31/2026 23:26	10,387.7	10,388.7
NIOBRARA, Original Hole	1/31/2026 12:12	10,418.5	10,419.5
NIOBRARA, Original Hole	1/31/2026 12:12	10,445.0	10,446.0
NIOBRARA, Original Hole	1/31/2026 12:12	10,482.0	10,483.0
NIOBRARA, Original Hole	1/31/2026 12:12	10,506.7	10,507.7
NIOBRARA, Original Hole	1/31/2026 12:11	10,541.8	10,542.8
NIOBRARA, Original Hole	1/31/2026 12:11	10,570.4	10,571.4
NIOBRARA, Original Hole	1/31/2026 12:11	10,594.6	10,595.6
NIOBRARA, Original Hole	1/31/2026 12:11	10,628.2	10,629.2
NIOBRARA, Original Hole	1/31/2026 01:26	10,662.1	10,663.1
NIOBRARA, Original Hole	1/31/2026 01:26	10,690.8	10,691.8
NIOBRARA, Original Hole	1/31/2026 01:26	10,715.8	10,716.8
NIOBRARA, Original Hole	1/31/2026 01:25	10,750.8	10,751.8
NIOBRARA, Original Hole	1/31/2026 01:25	10,780.6	10,781.6



# Rockies Current Wellbore - Regulatory

Well Name: GUTTERSEN Y12-773

## Original Hole [Land]



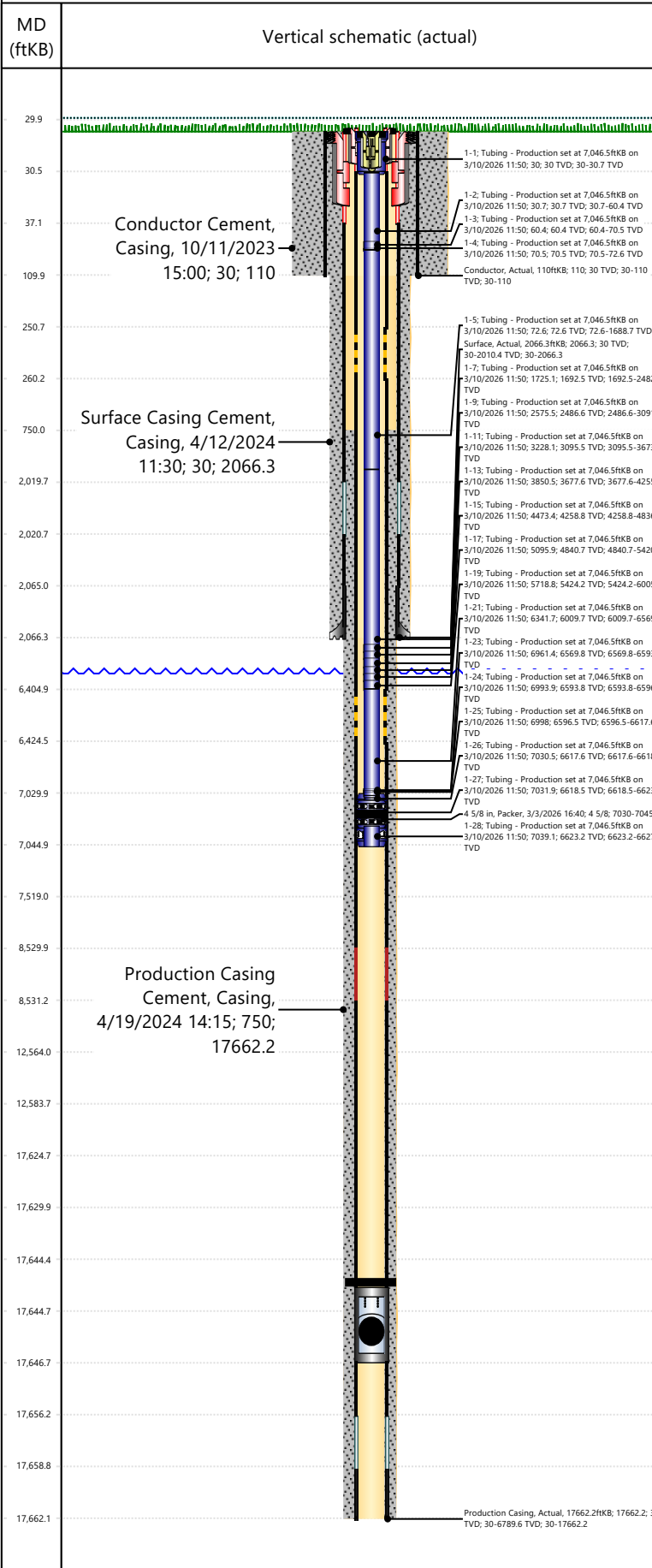
Perforations			
Linked Zone	Date	Top Depth (ftKB)	Bottom Depth (ftKB)
NIOBRARA, Original Hole	1/31/2026 01:24	10,804.3	10,805.3
NIOBRARA, Original Hole	1/31/2026 01:24	10,840.5	10,841.5
NIOBRARA, Original Hole	1/31/2026 01:24	10,868.7	10,869.7
NIOBRARA, Original Hole	1/30/2026 11:04	10,900.1	10,901.1
NIOBRARA, Original Hole	1/30/2026 11:03	10,933.3	10,934.3
NIOBRARA, Original Hole	1/30/2026 11:03	10,965.4	10,966.4
NIOBRARA, Original Hole	1/30/2026 11:03	10,994.3	10,995.3
NIOBRARA, Original Hole	1/30/2026 11:03	11,018.3	11,019.3
NIOBRARA, Original Hole	1/30/2026 11:02	11,046.5	11,047.5
NIOBRARA, Original Hole	1/30/2026 11:02	11,078.5	11,079.5
NIOBRARA, Original Hole	1/30/2026 11:02	11,112.7	11,113.7
NIOBRARA, Original Hole	1/30/2026 00:45	11,137.9	11,138.9
NIOBRARA, Original Hole	1/30/2026 00:45	11,174.3	11,175.3
NIOBRARA, Original Hole	1/30/2026 00:45	11,203.3	11,204.3
NIOBRARA, Original Hole	1/30/2026 00:44	11,233.3	11,234.3
NIOBRARA, Original Hole	1/30/2026 00:44	11,259.5	11,260.5
NIOBRARA, Original Hole	1/30/2026 00:44	11,289.3	11,290.3
NIOBRARA, Original Hole	1/30/2026 00:43	11,322.1	11,323.1
NIOBRARA, Original Hole	1/30/2026 00:43	11,353.5	11,354.5
NIOBRARA, Original Hole	1/29/2026 11:37	11,378.2	11,379.2
NIOBRARA, Original Hole	1/29/2026 11:37	11,412.1	11,413.1
NIOBRARA, Original Hole	1/29/2026 11:37	11,441.1	11,442.1
NIOBRARA, Original Hole	1/29/2026 11:36	11,464.9	11,465.9
NIOBRARA, Original Hole	1/29/2026 11:36	11,500.6	11,501.6
NIOBRARA, Original Hole	1/29/2026 11:36	11,522.9	11,523.9



# Rockies Current Wellbore - Regulatory

Well Name: GUTTERSEN Y12-773

## Original Hole [Land]



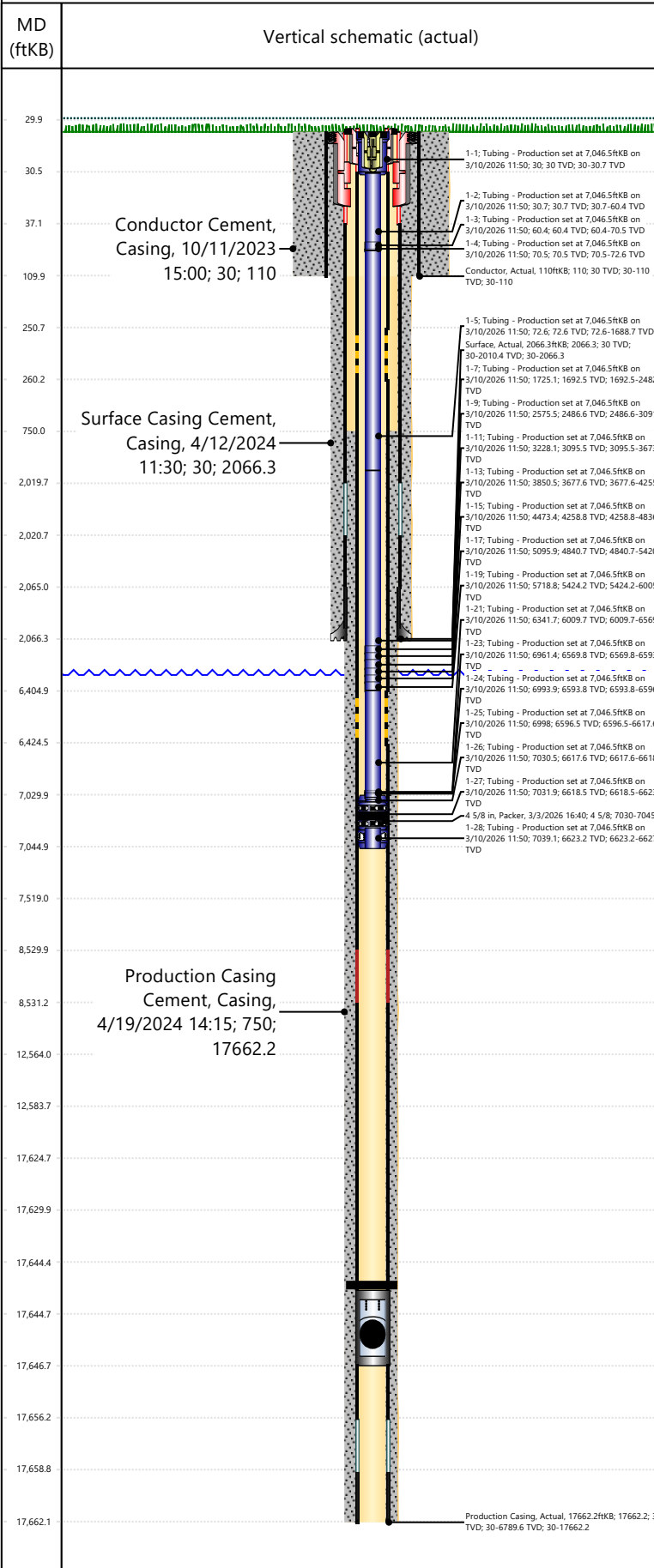
Perforations			
Linked Zone	Date	Top Depth (ftKB)	Bottom Depth (ftKB)
NIOBRARA, Original Hole	1/29/2026 11:35	11,553.3	11,554.3
NIOBRARA, Original Hole	1/29/2026 11:35	11,588.3	11,589.3
NIOBRARA, Original Hole	1/29/2026 00:27	11,629.2	11,630.2
NIOBRARA, Original Hole	1/29/2026 00:27	11,658.9	11,659.9
NIOBRARA, Original Hole	1/29/2026 00:27	11,688.6	11,689.6
NIOBRARA, Original Hole	1/29/2026 00:26	11,719.1	11,720.1
NIOBRARA, Original Hole	1/29/2026 00:26	11,745.1	11,746.1
NIOBRARA, Original Hole	1/29/2026 00:25	11,772.3	11,773.3
NIOBRARA, Original Hole	1/29/2026 00:24	11,809.7	11,810.7
NIOBRARA, Original Hole	1/29/2026 00:24	11,837.0	11,838.0
NIOBRARA, Original Hole	1/28/2026 14:26	11,871.3	11,872.4
NIOBRARA, Original Hole	1/28/2026 14:26	11,900.2	11,901.2
NIOBRARA, Original Hole	1/28/2026 14:26	11,928.9	11,929.9
NIOBRARA, Original Hole	1/28/2026 14:26	11,959.5	11,960.5
NIOBRARA, Original Hole	1/28/2026 14:25	11,989.6	11,990.6
NIOBRARA, Original Hole	1/28/2026 14:25	12,017.9	12,018.9
NIOBRARA, Original Hole	1/28/2026 14:25	12,039.4	12,040.4
NIOBRARA, Original Hole	1/28/2026 14:24	12,077.3	12,078.3
NIOBRARA, Original Hole	1/27/2026 21:07	12,113.4	12,114.4
NIOBRARA, Original Hole	1/27/2026 21:07	12,135.8	12,136.8
NIOBRARA, Original Hole	1/27/2026 21:07	12,162.7	12,163.7
NIOBRARA, Original Hole	1/27/2026 21:06	12,201.2	12,202.2
NIOBRARA, Original Hole	1/27/2026 21:06	12,231.8	12,232.8
NIOBRARA, Original Hole	1/27/2026 21:06	12,262.0	12,263.0
NIOBRARA, Original Hole	1/27/2026 21:06	12,289.3	12,290.3



# Rockies Current Wellbore - Regulatory

Well Name: GUTTERSEN Y12-773

## Original Hole [Land]



Perforations			
Linked Zone	Date	Top Depth (ftKB)	Bottom Depth (ftKB)
NIOBRARA, Original Hole	1/27/2026 21:05	12,320.0	12,321.0
NIOBRARA, Original Hole	1/27/2026 05:48	12,353.8	12,354.8
NIOBRARA, Original Hole	1/27/2026 05:47	12,383.2	12,384.2
NIOBRARA, Original Hole	1/27/2026 05:47	12,411.6	12,412.7
NIOBRARA, Original Hole	1/27/2026 05:47	12,440.2	12,441.2
NIOBRARA, Original Hole	1/27/2026 05:47	12,472.1	12,473.1
NIOBRARA, Original Hole	1/27/2026 05:46	12,500.6	12,501.6
NIOBRARA, Original Hole	1/27/2026 05:46	12,532.2	12,533.2
NIOBRARA, Original Hole	1/27/2026 05:46	12,560.4	12,561.4
NIOBRARA, Original Hole	1/26/2026 15:01	12,594.7	12,595.7
NIOBRARA, Original Hole	1/26/2026 15:01	12,624.3	12,625.3
NIOBRARA, Original Hole	1/26/2026 15:01	12,653.9	12,654.9
NIOBRARA, Original Hole	1/26/2026 15:00	12,683.3	12,684.3
NIOBRARA, Original Hole	1/26/2026 15:00	12,711.3	12,712.3
NIOBRARA, Original Hole	1/26/2026 15:00	12,746.6	12,747.6
NIOBRARA, Original Hole	1/26/2026 14:59	12,773.7	12,774.7
NIOBRARA, Original Hole	1/26/2026 14:58	12,802.3	12,803.3
NIOBRARA, Original Hole	1/26/2026 03:31	12,835.1	12,836.1
NIOBRARA, Original Hole	1/26/2026 03:30	12,859.8	12,860.8
NIOBRARA, Original Hole	1/26/2026 03:30	12,890.4	12,891.4
NIOBRARA, Original Hole	1/26/2026 03:30	12,925.2	12,926.2
NIOBRARA, Original Hole	1/26/2026 03:29	12,955.9	12,957.0
NIOBRARA, Original Hole	1/26/2026 03:29	12,983.4	12,984.4
NIOBRARA, Original Hole	1/26/2026 03:29	13,010.6	13,011.6
NIOBRARA, Original Hole	1/26/2026 03:28	13,044.0	13,045.0



# Rockies Current Wellbore - Regulatory

Well Name: GUTTERSEN Y12-773

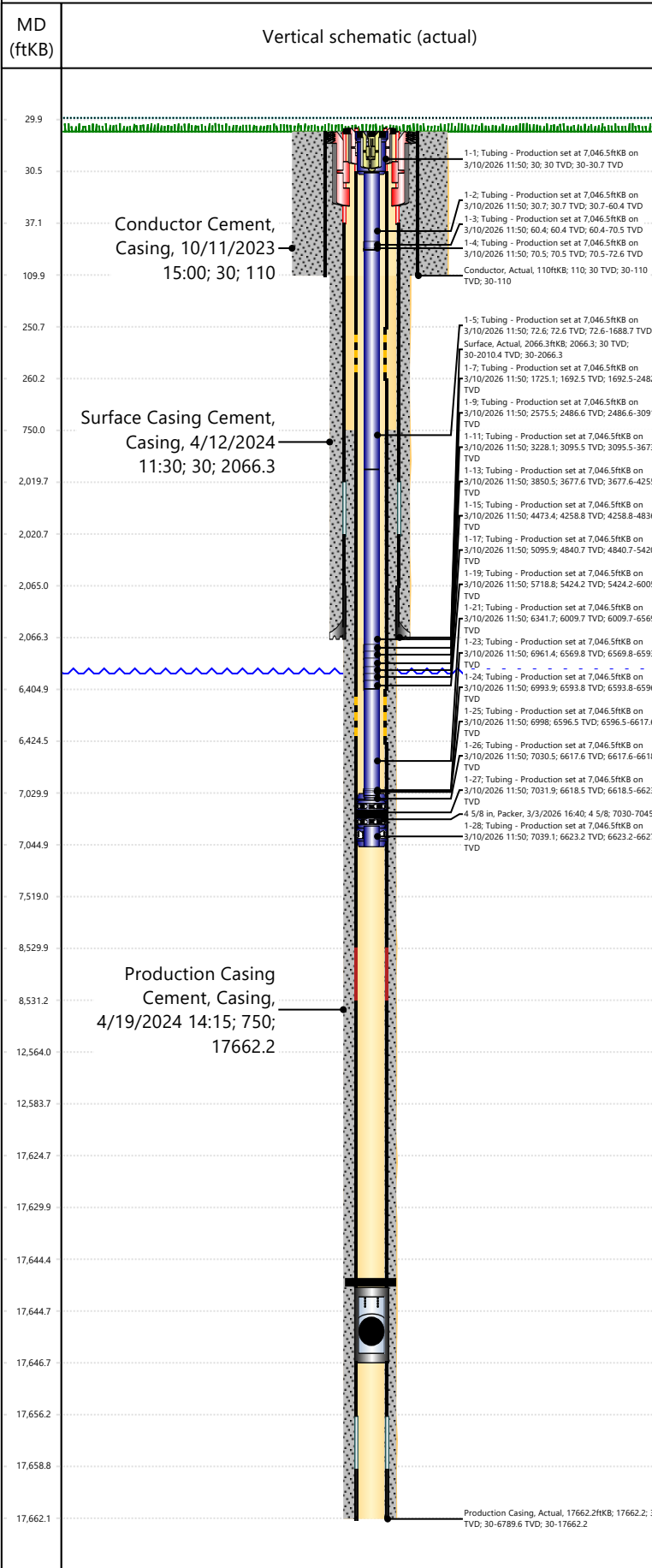
Original Hole [Land]		Perforations			
MD (ftKB)	Vertical schematic (actual)	Linked Zone	Date	Top Depth (ftKB)	Bottom Depth (ftKB)
29.9		NIOBRARA, Original Hole	1/25/2026 09:44	13,072.2	13,073.2
30.5		NIOBRARA, Original Hole	1/25/2026 09:44	13,108.6	13,109.6
37.1		NIOBRARA, Original Hole	1/25/2026 09:44	13,130.4	13,131.4
109.9		NIOBRARA, Original Hole	1/25/2026 09:44	13,160.0	13,161.0
250.7		NIOBRARA, Original Hole	1/25/2026 09:43	13,199.8	13,200.8
260.2		NIOBRARA, Original Hole	1/25/2026 09:43	13,228.1	13,229.1
750.0		NIOBRARA, Original Hole	1/25/2026 09:43	13,252.7	13,253.7
2,019.7		NIOBRARA, Original Hole	1/25/2026 09:42	13,286.0	13,287.0
2,020.7		NIOBRARA, Original Hole	1/24/2026 21:43	13,316.6	13,317.6
2,065.0		NIOBRARA, Original Hole	1/24/2026 21:43	13,347.6	13,348.6
2,066.3		NIOBRARA, Original Hole	1/24/2026 21:42	13,375.5	13,376.5
6,404.9		NIOBRARA, Original Hole	1/24/2026 21:42	13,400.9	13,401.9
6,424.5		NIOBRARA, Original Hole	1/24/2026 21:42	13,431.5	13,432.5
7,029.9		NIOBRARA, Original Hole	1/24/2026 21:41	13,459.5	13,460.5
7,044.9		NIOBRARA, Original Hole	1/24/2026 21:41	13,494.6	13,495.6
7,519.0		NIOBRARA, Original Hole	1/24/2026 21:41	13,526.9	13,527.9
8,529.9		NIOBRARA, Original Hole	1/24/2026 05:30	13,559.2	13,560.3
8,531.2		NIOBRARA, Original Hole	1/24/2026 05:30	13,589.6	13,590.6
12,564.0		NIOBRARA, Original Hole	1/24/2026 05:30	13,619.1	13,620.2
12,583.7		NIOBRARA, Original Hole	1/24/2026 05:30	13,645.2	13,646.2
17,624.7	NIOBRARA, Original Hole	1/24/2026 05:29	13,683.0	13,684.0	
17,629.9	NIOBRARA, Original Hole	1/24/2026 05:29	13,712.1	13,713.1	
17,644.4	NIOBRARA, Original Hole	1/24/2026 05:28	13,737.1	13,738.1	
17,644.7	NIOBRARA, Original Hole	1/24/2026 05:28	13,768.5	13,769.6	
17,646.7	NIOBRARA, Original Hole	1/23/2026 18:51	13,800.5	13,801.5	
17,656.2					
17,658.8					
17,662.1	Production Casing, Actual, 17662.2ftKB; 17662.2; 30-6789.6 TVD; 30-17662.2				



# Rockies Current Wellbore - Regulatory

Well Name: GUTTERSEN Y12-773

## Original Hole [Land]



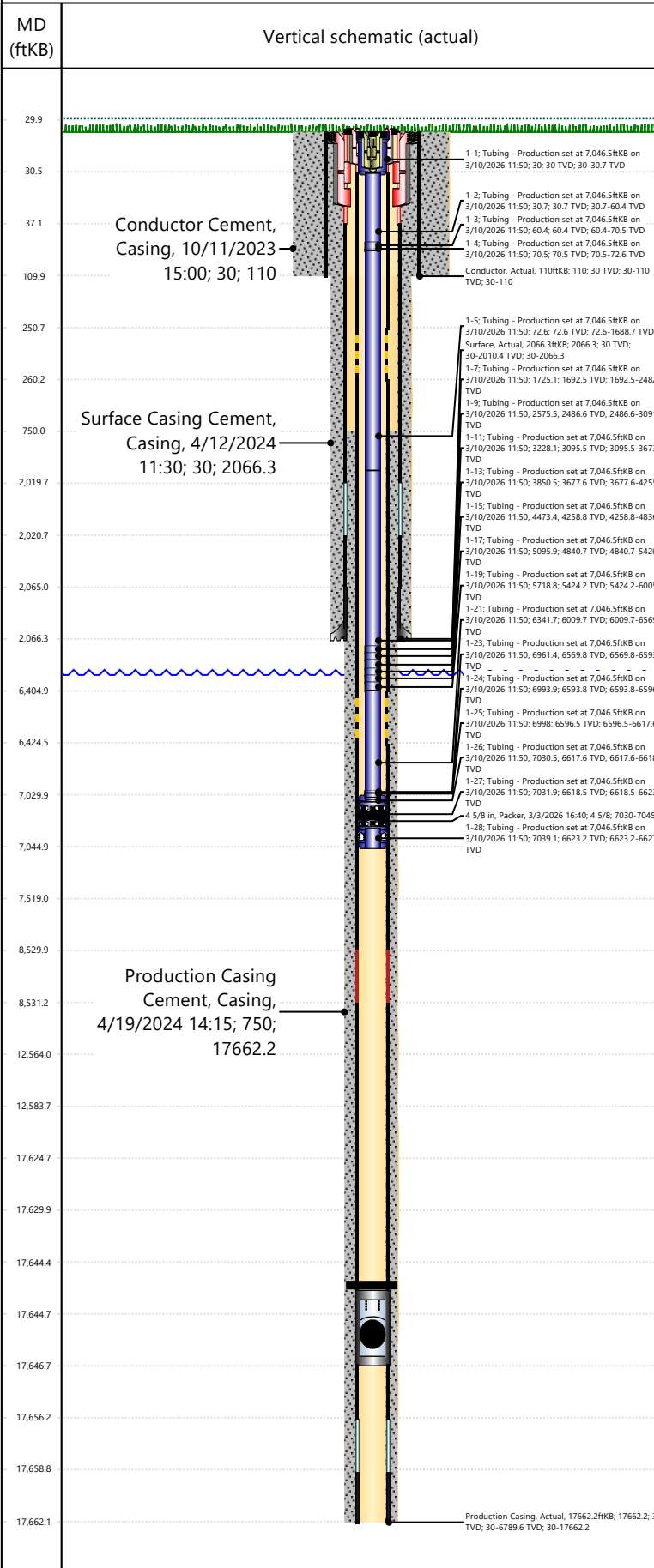
Perforations				
Linked Zone	Date	Top Depth (ftKB)	Bottom Depth (ftKB)	
NIOBRARA, Original Hole	1/23/2026 18:51	13,831.4	13,832.4	
NIOBRARA, Original Hole	1/23/2026 18:51	13,859.4	13,860.4	
NIOBRARA, Original Hole	1/23/2026 18:51	13,892.0	13,893.0	
NIOBRARA, Original Hole	1/23/2026 18:50	13,919.9	13,920.9	
NIOBRARA, Original Hole	1/23/2026 18:50	13,947.7	13,948.7	
NIOBRARA, Original Hole	1/23/2026 18:50	13,981.7	13,982.7	
NIOBRARA, Original Hole	1/23/2026 18:49	14,010.8	14,011.8	
NIOBRARA, Original Hole	1/23/2026 08:18	14,037.1	14,038.1	
NIOBRARA, Original Hole	1/23/2026 08:18	14,073.3	14,074.3	
NIOBRARA, Original Hole	1/23/2026 08:17	14,100.6	14,101.6	
NIOBRARA, Original Hole	1/23/2026 08:17	14,132.0	14,133.0	
NIOBRARA, Original Hole	1/23/2026 08:17	14,161.8	14,162.8	
NIOBRARA, Original Hole	1/23/2026 08:16	14,191.6	14,192.6	
NIOBRARA, Original Hole	1/23/2026 08:16	14,216.3	14,217.3	
NIOBRARA, Original Hole	1/23/2026 08:15	14,250.6	14,251.6	
NIOBRARA, Original Hole	1/22/2026 21:53	14,284.6	14,285.6	
NIOBRARA, Original Hole	1/22/2026 21:53	14,313.5	14,314.5	
NIOBRARA, Original Hole	1/22/2026 21:53	14,340.9	14,341.9	
NIOBRARA, Original Hole	1/22/2026 21:52	14,373.7	14,374.7	
NIOBRARA, Original Hole	1/22/2026 21:52	14,396.0	14,397.0	
NIOBRARA, Original Hole	1/22/2026 21:52	14,423.1	14,424.1	
NIOBRARA, Original Hole	1/22/2026 21:51	14,457.3	14,458.3	
NIOBRARA, Original Hole	1/22/2026 21:51	14,493.0	14,494.0	
NIOBRARA, Original Hole	1/22/2026 06:03	14,527.8	14,528.8	
NIOBRARA, Original Hole	1/22/2026 06:03	14,554.9	14,555.9	



# Rockies Current Wellbore - Regulatory

Well Name: GUTTERSEN Y12-773

## Original Hole [Land]



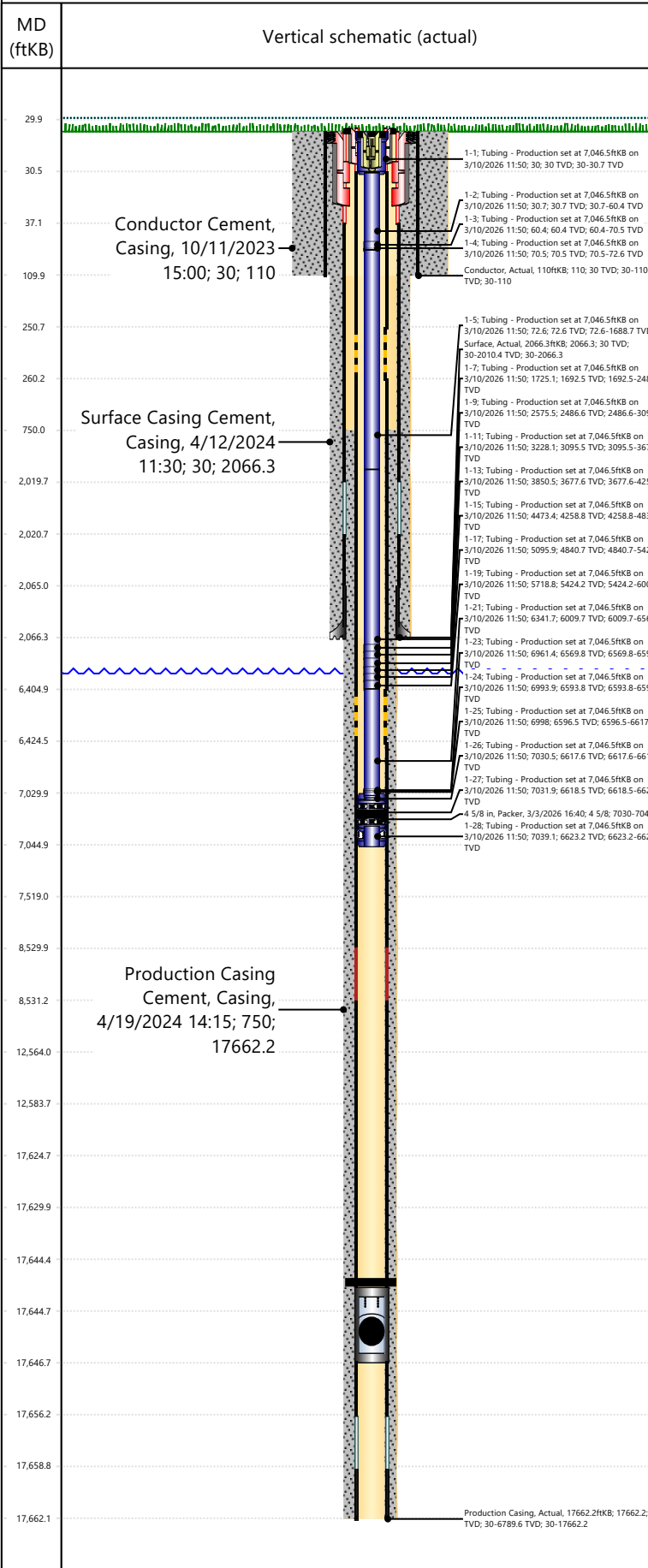
Perforations			
Linked Zone	Date	Top Depth (ftKB)	Bottom Depth (ftKB)
NIOBRARA, Original Hole	1/22/2026 06:02	14,585.2	14,586.2
NIOBRARA, Original Hole	1/22/2026 06:02	14,615.4	14,616.4
NIOBRARA, Original Hole	1/22/2026 06:02	14,645.5	14,646.5
NIOBRARA, Original Hole	1/22/2026 06:01	14,675.5	14,676.5
NIOBRARA, Original Hole	1/22/2026 06:01	14,701.9	14,702.9
NIOBRARA, Original Hole	1/22/2026 06:00	14,732.4	14,733.4
NIOBRARA, Original Hole	1/21/2026 18:21	14,767.6	14,768.6
NIOBRARA, Original Hole	1/21/2026 18:21	14,791.4	14,792.4
NIOBRARA, Original Hole	1/21/2026 18:20	14,826.8	14,827.8
NIOBRARA, Original Hole	1/21/2026 18:20	14,855.6	14,856.6
NIOBRARA, Original Hole	1/21/2026 18:20	14,887.7	14,888.7
NIOBRARA, Original Hole	1/21/2026 18:19	14,919.8	14,920.8
NIOBRARA, Original Hole	1/21/2026 18:19	14,940.3	14,941.3
NIOBRARA, Original Hole	1/21/2026 18:19	14,976.8	14,977.8
NIOBRARA, Original Hole	1/21/2026 08:52	15,007.9	15,008.9
NIOBRARA, Original Hole	1/21/2026 08:52	15,037.5	15,038.5
NIOBRARA, Original Hole	1/21/2026 08:52	15,068.5	15,069.5
NIOBRARA, Original Hole	1/21/2026 08:51	15,097.3	15,098.3
NIOBRARA, Original Hole	1/21/2026 08:51	15,128.1	15,129.1
NIOBRARA, Original Hole	1/21/2026 08:50	15,156.5	15,157.5
NIOBRARA, Original Hole	1/21/2026 08:50	15,186.8	15,187.8
NIOBRARA, Original Hole	1/21/2026 08:50	15,214.8	15,215.8
NIOBRARA, Original Hole	1/20/2026 23:02	15,249.5	15,250.5
NIOBRARA, Original Hole	1/20/2026 23:02	15,274.3	15,275.3
NIOBRARA, Original Hole	1/20/2026 23:02	15,310.8	15,311.8



# Rockies Current Wellbore - Regulatory

Well Name: GUTTERSEN Y12-773

## Original Hole [Land]



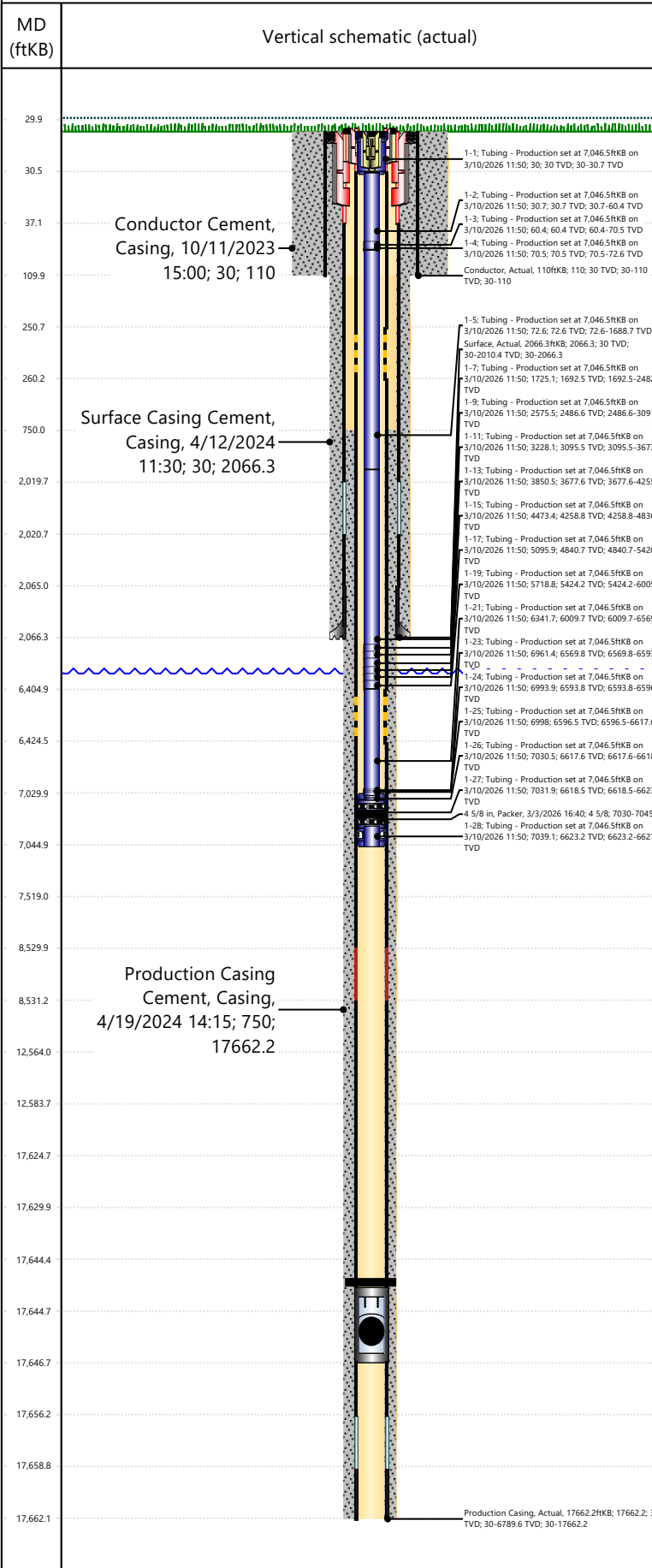
Perforations			
Linked Zone	Date	Top Depth (ftKB)	Bottom Depth (ftKB)
NIOBRARA, Original Hole	1/20/2026 23:01	15,338.5	15,339.5
NIOBRARA, Original Hole	1/20/2026 23:01	15,369.1	15,370.1
NIOBRARA, Original Hole	1/20/2026 23:01	15,399.8	15,400.8
NIOBRARA, Original Hole	1/20/2026 23:00	15,430.4	15,431.4
NIOBRARA, Original Hole	1/20/2026 23:00	15,458.8	15,459.8
NIOBRARA, Original Hole	1/20/2026 10:21	15,491.3	15,492.3
NIOBRARA, Original Hole	1/20/2026 10:21	15,522.7	15,523.7
NIOBRARA, Original Hole	1/20/2026 10:21	15,550.5	15,551.5
NIOBRARA, Original Hole	1/20/2026 10:20	15,582.0	15,583.0
NIOBRARA, Original Hole	1/20/2026 10:20	15,609.8	15,610.8
NIOBRARA, Original Hole	1/20/2026 10:20	15,641.2	15,642.2
NIOBRARA, Original Hole	1/20/2026 10:20	15,670.6	15,671.6
NIOBRARA, Original Hole	1/20/2026 10:19	15,703.2	15,704.2
NIOBRARA, Original Hole	1/19/2026 22:22	15,732.0	15,733.0
NIOBRARA, Original Hole	1/19/2026 22:22	15,762.8	15,763.8
NIOBRARA, Original Hole	1/19/2026 22:21	15,791.9	15,792.9
NIOBRARA, Original Hole	1/19/2026 22:21	15,821.1	15,822.1
NIOBRARA, Original Hole	1/19/2026 22:21	15,851.7	15,852.7
NIOBRARA, Original Hole	1/19/2026 22:20	15,876.5	15,877.5
NIOBRARA, Original Hole	1/19/2026 22:20	15,907.2	15,908.2
NIOBRARA, Original Hole	1/19/2026 22:20	15,941.7	15,942.7
NIOBRARA, Original Hole	1/19/2026 10:17	15,973.1	15,974.1
NIOBRARA, Original Hole	1/19/2026 10:17	15,998.8	15,999.8
NIOBRARA, Original Hole	1/19/2026 10:17	16,032.6	16,033.6
NIOBRARA, Original Hole	1/19/2026 10:16	16,062.8	16,063.8



# Rockies Current Wellbore - Regulatory

Well Name: GUTTERSEN Y12-773

## Original Hole [Land]



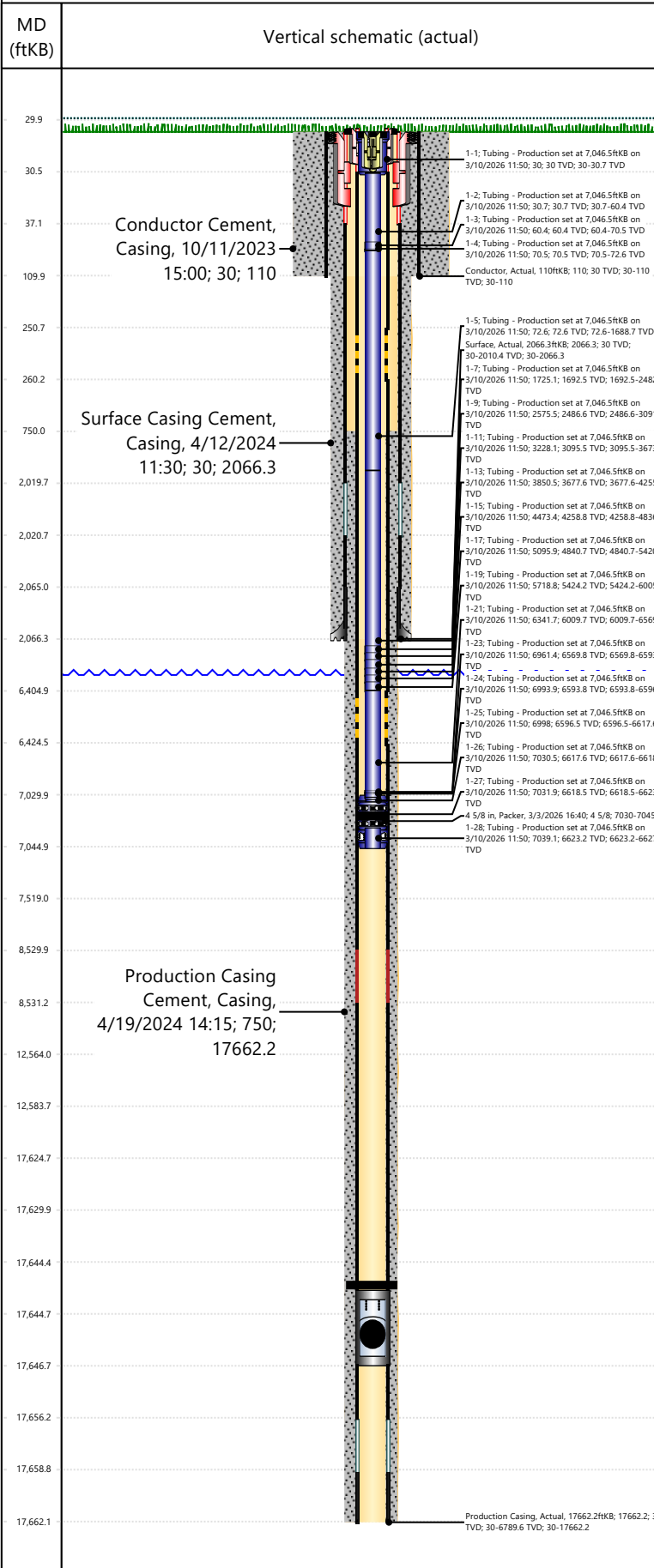
Perforations				
Linked Zone	Date	Top Depth (ftKB)	Bottom Depth (ftKB)	
NIOBRARA, Original Hole	1/19/2026 10:16	16,086.4	16,087.4	
NIOBRARA, Original Hole	1/19/2026 10:16	16,119.7	16,120.7	
NIOBRARA, Original Hole	1/19/2026 10:15	16,148.7	16,149.7	
NIOBRARA, Original Hole	1/19/2026 10:15	16,185.3	16,186.3	
NIOBRARA, Original Hole	1/18/2026 21:55	16,214.3	16,215.3	
NIOBRARA, Original Hole	1/18/2026 21:55	16,244.9	16,245.9	
NIOBRARA, Original Hole	1/18/2026 21:55	16,274.0	16,275.0	
NIOBRARA, Original Hole	1/18/2026 21:54	16,304.6	16,305.6	
NIOBRARA, Original Hole	1/18/2026 21:54	16,329.1	16,330.1	
NIOBRARA, Original Hole	1/18/2026 21:54	16,364.4	16,365.4	
NIOBRARA, Original Hole	1/18/2026 21:53	16,393.7	16,394.7	
NIOBRARA, Original Hole	1/18/2026 21:53	16,424.3	16,425.3	
NIOBRARA, Original Hole	1/18/2026 10:21	16,455.8	16,456.8	
NIOBRARA, Original Hole	1/18/2026 10:21	16,487.3	16,488.3	
NIOBRARA, Original Hole	1/18/2026 10:21	16,516.8	16,517.9	
NIOBRARA, Original Hole	1/18/2026 10:20	16,541.6	16,542.6	
NIOBRARA, Original Hole	1/18/2026 10:20	16,574.6	16,575.6	
NIOBRARA, Original Hole	1/18/2026 10:20	16,601.9	16,602.9	
NIOBRARA, Original Hole	1/18/2026 10:19	16,635.3	16,636.3	
NIOBRARA, Original Hole	1/18/2026 10:18	16,667.3	16,668.3	
NIOBRARA, Original Hole	1/17/2026 23:52	16,698.6	16,699.6	
NIOBRARA, Original Hole	1/17/2026 23:51	16,727.4	16,728.4	
NIOBRARA, Original Hole	1/17/2026 23:51	16,757.9	16,758.9	
NIOBRARA, Original Hole	1/17/2026 23:51	16,781.9	16,782.9	
NIOBRARA, Original Hole	1/17/2026 23:51	16,817.2	16,818.2	



# Rockies Current Wellbore - Regulatory

Well Name: GUTTERSEN Y12-773

## Original Hole [Land]



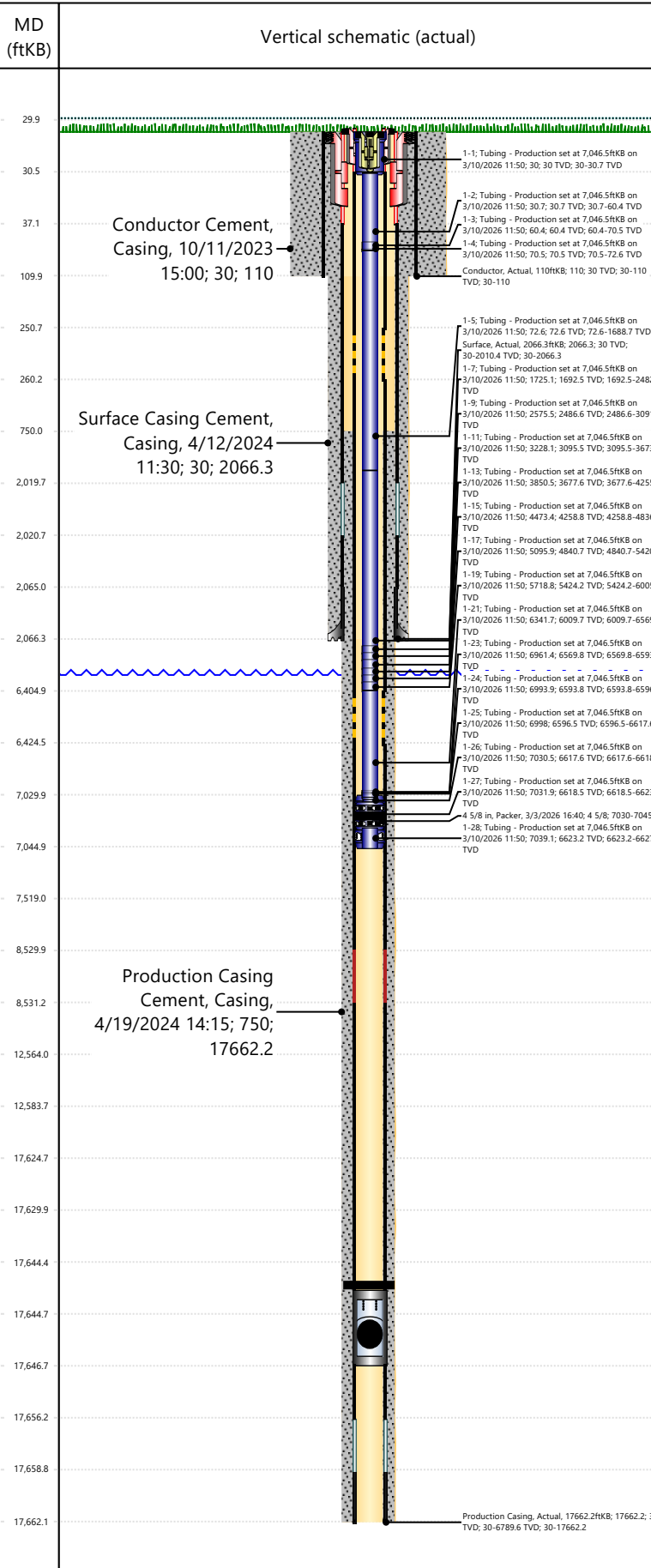
Perforations			
Linked Zone	Date	Top Depth (ftKB)	Bottom Depth (ftKB)
NIOBRARA, Original Hole	1/17/2026 23:50	16,847.5	16,848.6
NIOBRARA, Original Hole	1/17/2026 23:50	16,871.3	16,872.3
NIOBRARA, Original Hole	1/17/2026 23:50	16,906.8	16,907.8
NIOBRARA, Original Hole	1/17/2026 16:34	16,938.4	16,939.4
NIOBRARA, Original Hole	1/17/2026 16:33	16,968.4	16,969.4
NIOBRARA, Original Hole	1/17/2026 16:33	16,998.6	16,999.6
NIOBRARA, Original Hole	1/17/2026 16:32	17,030.1	17,031.1
NIOBRARA, Original Hole	1/17/2026 16:32	17,057.5	17,058.5
NIOBRARA, Original Hole	1/17/2026 16:32	17,090.3	17,091.3
NIOBRARA, Original Hole	1/17/2026 16:31	17,119.4	17,120.4
NIOBRARA, Original Hole	1/17/2026 16:31	17,149.7	17,150.7
NIOBRARA, Original Hole	1/17/2026 01:36	17,182.9	17,183.9
NIOBRARA, Original Hole	1/17/2026 01:36	17,212.7	17,213.7
NIOBRARA, Original Hole	1/17/2026 01:36	17,240.9	17,241.9
NIOBRARA, Original Hole	1/17/2026 01:36	17,264.6	17,265.6
NIOBRARA, Original Hole	1/17/2026 01:35	17,301.9	17,302.9
NIOBRARA, Original Hole	1/17/2026 01:35	17,325.6	17,326.7
NIOBRARA, Original Hole	1/17/2026 01:34	17,356.0	17,357.0
NIOBRARA, Original Hole	1/17/2026 01:34	17,390.7	17,391.7
NIOBRARA, Original Hole	12/31/2025 13:09	17,418.0	17,419.0
NIOBRARA, Original Hole	12/31/2025 13:08	17,448.0	17,449.0
NIOBRARA, Original Hole	12/31/2025 13:07	17,478.0	17,479.0
NIOBRARA, Original Hole	12/31/2025 13:06	17,508.0	17,509.0
NIOBRARA, Original Hole	12/31/2025 13:05	17,538.0	17,539.0
NIOBRARA, Original Hole	12/31/2025 13:04	17,568.0	17,569.0



# Rockies Current Wellbore - Regulatory

Well Name: GUTTERSEN Y12-773

## Original Hole [Land]



Perforations						
Linked Zone	Date	Top Depth (ftKB)	Bottom Depth (ftKB)			
NIOBRARA, Original Hole	12/31/2025 13:03	17,598.0	17,599.0			
Linked Zone	Date	Top Depth (ftKB)	Bottom Depth (ftKB)			
NIOBRARA, Original Hole	12/31/2025 13:02	17,629.0	17,630.0			
Other In Hole						
Run Date	Des	Make	OD (in)	Top (ftKB)	Btm (ftKB)	
3/3/2026	Packer		4 5/8	7,030.0	7,045.0	
Logs						
Date	Type	Depth Top (MD) (ftKB)		Btm (ftKB)		
4/16/2024	Logging While Drilling (LWD)	2,063		17,660.0		
Wellbore Plug Back Total Depths						
Date	Type	Com			PBTD (ftKB)	
4/19/2024	Ball Seat	BALL SEAT SUB			17,645	