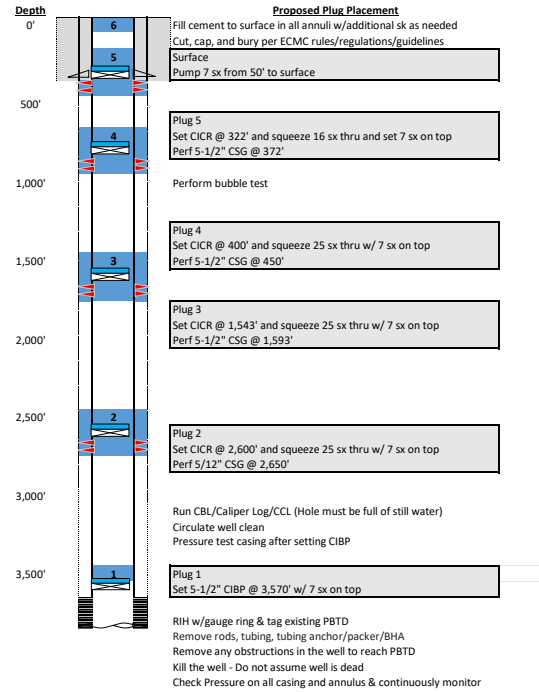
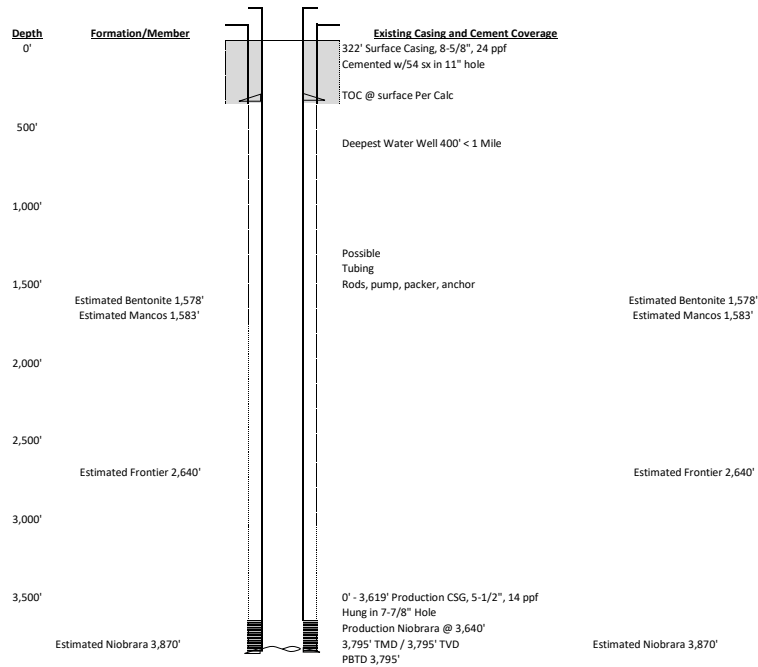


Phoenix Resources Bond Claim: Plug- 316742, 107-06013
Mary Hite Fee 1

Prepared 2/24/2026 **Notes:**
 Operator # 10691 Spud Date 8/16/1969
 FIELD NAME SAGE CREEK
 FIELD NUMBER 76150

LOCATION

Basin SAND WASH BASIN Mineral Owner: Fee
 Location-Townships SN Surface Owner: Fee
 Location-Ranges 87W
 Elevation 7,430



Space	Hole/Csg	Csg	cf/f	bbls/ft
Annulus above shoe	8.5	7.625	0.1380	0.0247
Annulus below shoe	8.5	7.625	0.1385	0.0247
Casing		7.625	0.2673	0.0476

Plug #	sk	bbls
1	7	1.4
2	32	6.4
3	32	6.3
4	32	6.3
5	23	4.5
6	7	1.4
		0.0
		0.0
Total	133	26.2

*BOP or other mechanical method should be used for well control

		Units	
Sacks Cement	Length of Plug	ft	ft ³ /ft
133.00	830	0.2632	1.15

		Units	
Sacks Cement	Length of Plug	ft	ft ³ /ft
133.00	1116.42	0.1370	1.15