

BARNDOR #24-13

ECMC-style Wellbore Diagram

API 00-007-109654	LEGAL LOCATION SESW Sec 13 T32S R68W 6 PM	COUNTY / FIELD LAS ANIMAS / PURGATOIRE RIVER	TYPE / DATE Current / 2026-01-18
-----------------------------	---	--	--

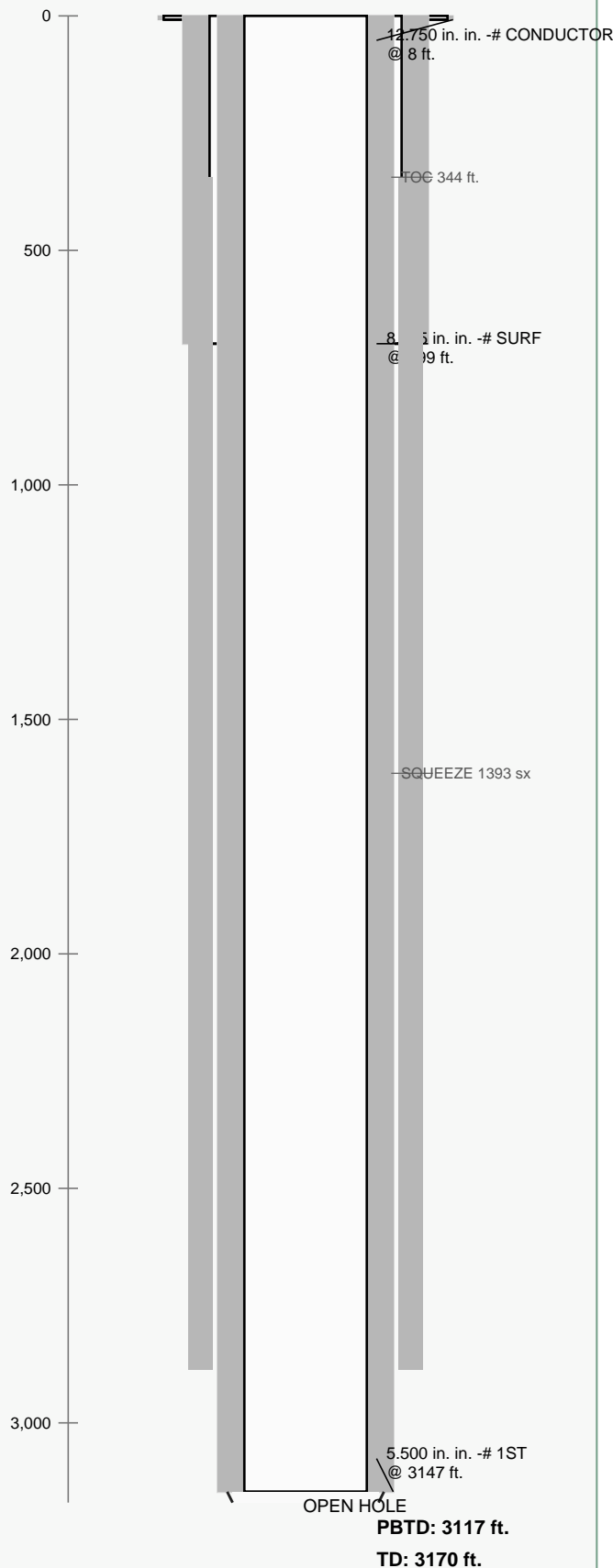
WELL / GEOLOGY

Surface Elev.: 8223 ft.
Facility Status: PR
Spud Date: 9/30/2008
Completion Date: 10/3/2008
Planned Footage: 488FSL 2662 FWL
As Drilled: Footages Not Available
Logs: COMPENSATED DENSITY, SINGLE INDUCTION, CEMENT BOND AND MUD LOGS

FORMATION TOPS

No formation data listed

SCHEMATIC DEPTH (ft.)



ANNOTATIONS / RECORDS

CASING

String 1: CONDUCTOR, hole 11.000 in., casing 12.750 in., top 0 ft., set 8 ft., wt -, src ACTUAL, tools -
 String 2: SURF, hole 11.000 in., casing 8.625 in., top 0 ft., set 699 ft., wt -, src ACTUAL, tools -
 String 3: 1ST, hole 7.875 in., casing 5.500 in., top 0 ft., set 3147 ft., wt -, src ACTUAL, tools -

CEMENT

Record 11: SQUEEZE, 1393 sx, top 344 ft., bottom 2886 ft., method CBL, yield -, slurry wt -

PERFORATIONS

OPEN HOLE COMPLETION - no perforation rows listed in workbook

DOWNHOLE / P&A

No additional plugs / tools / tubing rows listed

LEGEND

- Cement
- Casing
- Open Hole
- Perforations

Note: All depths reference workbook values. Open hole is shown only when workbook perforations are absent and casing-to-TD geometry indicates an uncased interval.