

Looking at an open excavation, located immediately east of the initial spill/release point. Stained soil and salt crusting are visible on the excavation sidewalls. A sheen is visible on groundwater at the base of the excavation. Bird netting has been installed. Flowlines are visible within the excavation. Unused equipment and an unmarked soil stockpile with no stormwater BMPs are visible adjacent to the excavation.



Looking at the northern excavation open at the spill location. Stained soil and salt crusting are visible on the excavation sidewalls. A sheen is visible on groundwater at the base of the excavation. Bird netting has been installed over the open excavations. A segment of flowline is visible protruding from the excavation.



Frederick, CO, United States

Lat 40.123498, Long -105.013722

03/25/2026 14:47 GMT-06:00

ECMC ; Environmental Inspection



86°F

149° SE

Maps



11.07 mph

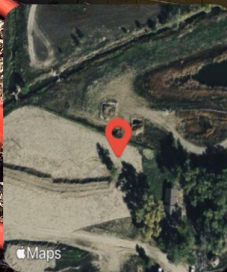


4905.71 ft



5.64 m

Looking at the southern excavation open at the spill location. Petroleum hydrocarbon saturated soil and salt crusting are visible on the excavation sidewalls. Free product is visible on groundwater at the base of the excavation. Bird netting has been installed over the open excavations.



Frederick, CO, United States

Lat 40.123416, Long -105.013789
03/25/2026 14:47 GMT-06:00
ECMC : Environmental Inspection



86°F

209° SW



11.07 mph

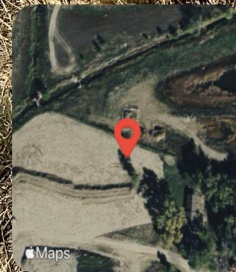


4905.32 ft



6.52 m

Looking at a soil stockpile marked "contaminated".



Frederick, CO, United States

Lat 40.123449, Long -105.013888

03/25/2026 14:48 GMT-06:00

ECMC : Environmental Inspection



86°F

242° SW

Apple Maps



11.07 mph



4903.58 ft



6.69 m

Looking at a soil stockpile marked "contaminated" (foreground) with no liner or BMPs (background, left). A liner is visible beneath the contaminated stockpile but has been compromised by holes/tears; soil has spilled outside of containment. Unused equipment is also visible in the background.



 **Frederick, CO, United States**
Lat 40.123668, Long -105.013989
03/25/2026 14:49 GMT-06:00
ECMC : Environmental Inspection

 86°F

 54° NE

 11.07 mph  4904.04 ft  5.14 m