

Looking at Facility 2 Consolidation 1/4/26 spill (Spill ID 492701) and a large unmarked soil stockpile. A liner is present beneath the stockpile, but is discontinuous and appears to have been driven over.



### Fort Lupton, CO, United States

Lat 40.094441, Long -104.780451  
03/25/2026 12:56 GMT-06:00  
ECMC : Environmental Inspection



82°F

9° N

8.55 mph

4980.22 ft

2.57 m



### Fort Lupton, CO, United States

Lat 40.094526, Long -104.780250  
03/25/2026 12:56 GMT-06:00  
ECMC : Environmental Inspection



82°F

101° E

8.55 mph

4974.25 ft

3.27 m

Looking at Facility 2 Consolidation 1/4/26 spill (Spill ID 492701). An excavation remains open at the spill location. Orange construction fencing has been installed but has fallen. Unmarked soil stockpiles with no liners or stormwater BMPs are visible adjacent to the excavation. Stained soil is visible on the ground surface adjacent to the excavation. Unrelated construction equipment is visible in the background.



Fort Lupton, CO, United States

Lat 40.094519, Long -104.780090

03/25/2026 12:57 GMT-06:00

ECMC : Environmental Inspection



82°F

339° N

8.55 mph

4978.02 ft

5.11 m

Looking at storage of supplies/equipment. Trash is also visible adjacent to the location.



### Fort Lupton, CO, United States

Lat 40.094509, Long -104.779990

03/25/2026 12:57 GMT-06:00

ECMC : Environmental Inspection



82° F

92° E

8.55 mph

4978.77 ft

7.73 m

Flowlines are visible within the open excavation. Debris and soil mass failures obscure full visibility of the excavation base and sidewalls.





**Fort Lupton, CO, United States**  
Lat 40.094559, Long -104.779795  
03/25/2026 12:58 GMT-06:00  
ECMC : Environmental Inspection



82°F

267° W

8.55 mph    4976.57 ft    5.03 m

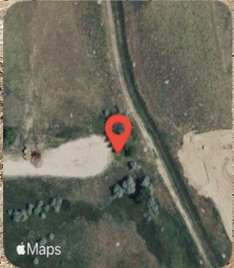
Apple Maps

Looking at the surface adjacent to and down topographic gradient of the Facility 2 Consolidation 1/4/26 spill (Spill ID 492701). Construction (utility installation) appears to have occurred adjacent to the spill.



Approximate spill area and direction of fluid flow (arrow)

Construction area



**Fort Lupton, CO, United States**  
Lat 40.094671, Long -104.779853  
03/25/2026 12:58 GMT-06:00  
ECMC : Environmental Inspection

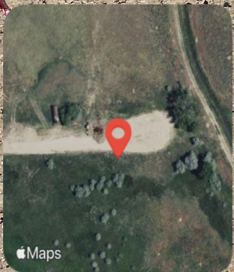
8.55 mph   4979.33 ft   4.08 m

82°F   188° S

Continuing down topographic gradient of the Facility 2 Consolidation 1/4/26 spill (Spill ID 492701). Debris is visible.



Approximate spill area and direction of fluid flow (arrow)

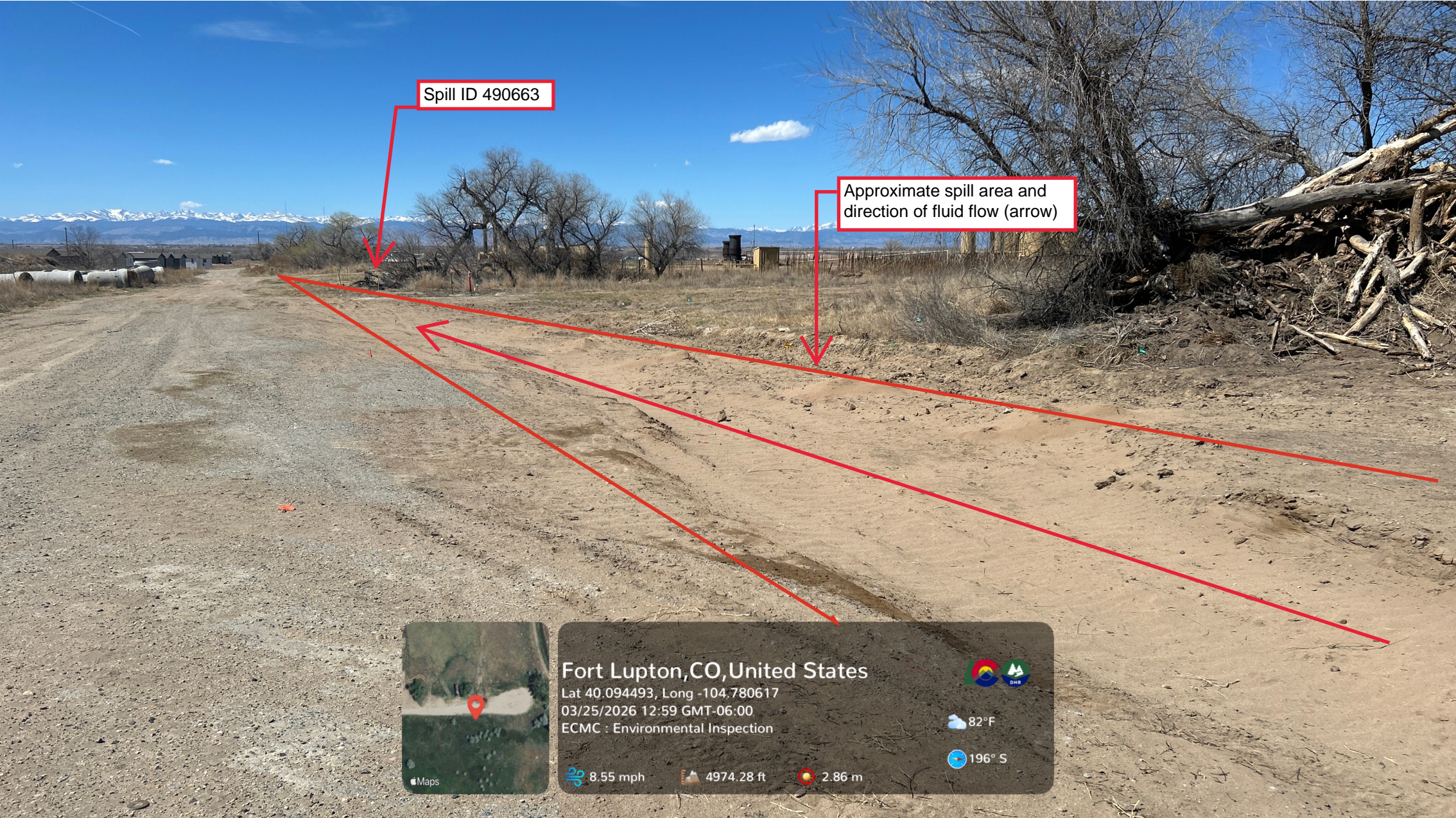


**Fort Lupton, CO, United States**  
Lat 40.094515, Long -104.780351  
03/25/2026 12:59 GMT-06:00  
ECMC : Environmental Inspection

8.55 mph   4972.47 ft   2.97 m

82°F  
189° S

Continuing down topographic gradient of the Facility 2 Consolidation 1/4/26 spill (Spill ID 492701). Stained soil is visible. No BMPs in place to control stormwater runoff.



Spill ID 490663

Approximate spill area and direction of fluid flow (arrow)



Fort Lupton, CO, United States

Lat 40.094493, Long -104.780617  
03/25/2026 12:59 GMT-06:00  
ECMC : Environmental Inspection



82°F

196° S

8.55 mph

4974.28 ft

2.86 m

Looking at the Facility 2 Consolidation spill (Spill ID 490663). The excavation at the spill location has been backfilled. The Facility 2 tank battery is visible in the background.



### Fort Lupton, CO, United States

Lat 40.094440, Long -104.781406  
03/25/2026 13:00 GMT-06:00  
ECMC : Environmental Inspection



82°F

219° SW

8.55 mph

4964.8 ft

11.19 m