

Sullivan Ditch was running (north to south) the time of the inspection. An open excavation remains on location. Large stockpile/truck traffic in background is unrelated to the Spill/Release.No Operator personnel or equipment were on location at the time of inspection.



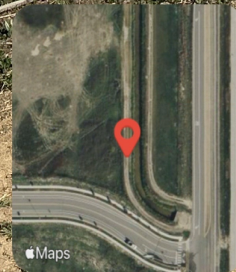
**Frederick, CO, United States**  
Lat 40.097892, Long -104.981569  
04/13/2026 09:22 GMT-06:00  
ECMC : Environmental Inspection

18.01 mph   4977.85 ft   3.54 m

62° F  
256° W

Apple Maps   DNR

An open excavation remains on location. Large stockpile/truck traffic in background is unrelated to the Spill/Release.



### Frederick, CO, United States

Lat 40.098174, Long -104.981582  
04/13/2026 09:22 GMT-06:00  
ECMC : Environmental Inspection

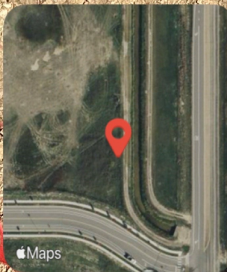


62°F

232° SW

18.01 mph 4983.24 ft 2.51 m

Stained soil and groundwater with free product are visible in situ. Soil mass failures are visible on the excavation sidewalls.



**Frederick, CO, United States**

Lat 40.098251, Long -104.981650  
04/13/2026 09:23 GMT-06:00  
ECMC : Environmental Inspection



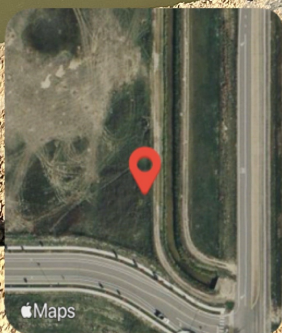
62°F

232° SW

18.01 mph    4979.66 ft    3.19 m

ECMC staff estimate the depth to groundwater to be ~9-10 feet.

Fence post  
measures ~60.5"



### Frederick, CO, United States

Lat 40.098250, Long -104.981667

04/13/2026 09:23 GMT-06:00

ECMC : Environmental Inspection



☀️ 62°F

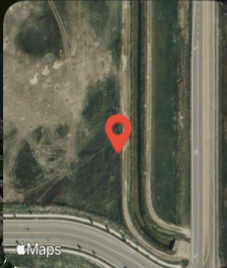
🌐 345° N

🌊 18.01 mph

🏔️ 4985.07 ft

📍 4.24 m

Stained soil and groundwater with free product are visible in situ.



**Frederick, CO, United States**

Lat 40.098346, Long -104.981643  
04/13/2026 09:24 GMT-06:00  
ECMC : Environmental Inspection



62°F

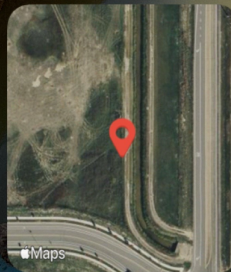
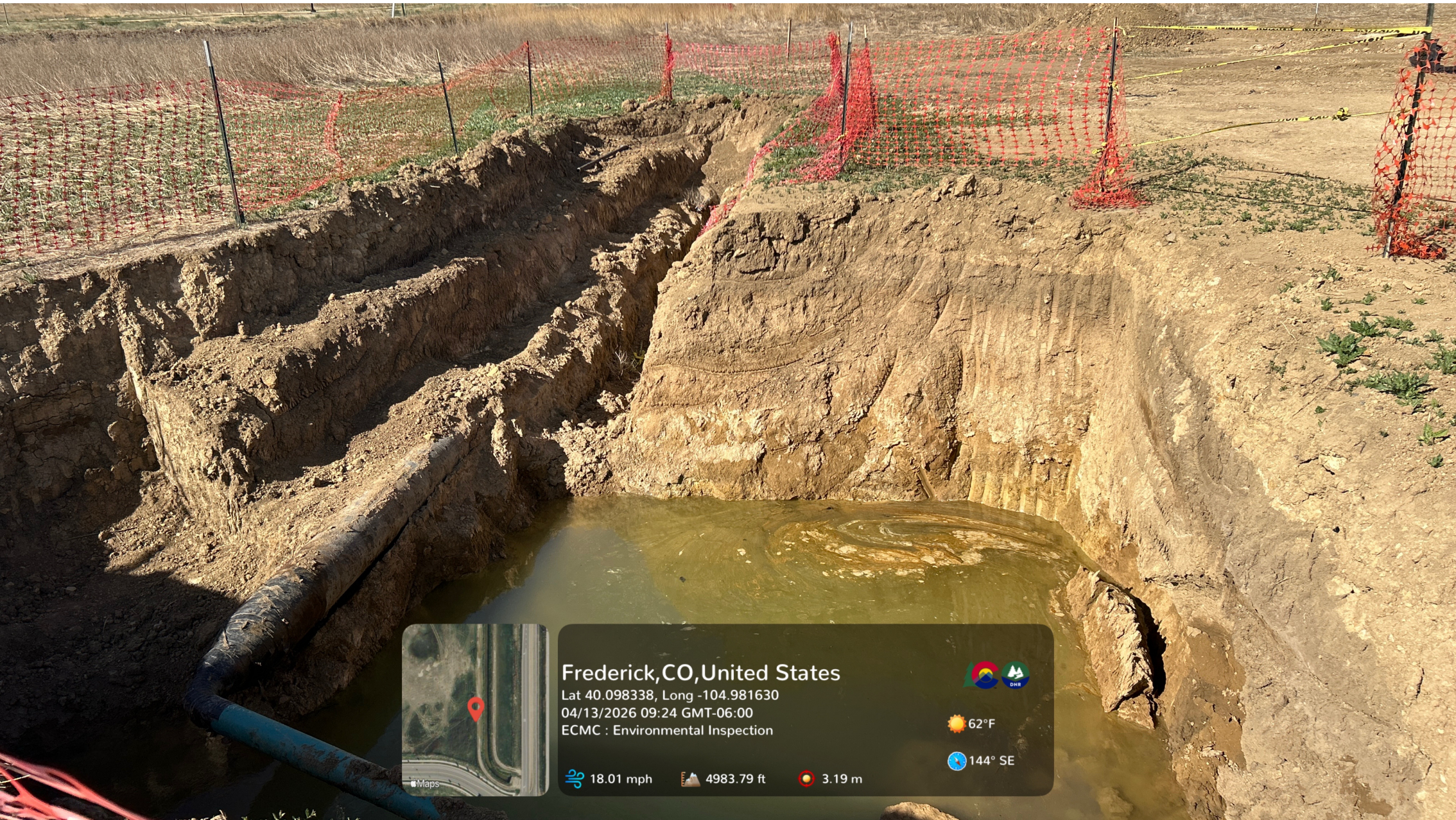
146° SE

18.01 mph

4985.6 ft

3.84 m

Stained soil and groundwater with free product are visible in situ. Yellow caution tape extends across a gap in orange construction fencing.



### Frederick, CO, United States

Lat 40.098338, Long -104.981630  
04/13/2026 09:24 GMT-06:00  
ECMC : Environmental Inspection



62°F

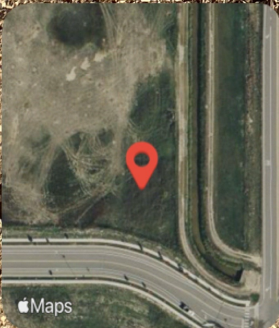
144° SE

18.01 mph

4983.79 ft

3.19 m

Two flowlines are visible within the excavation.



### Frederick, CO, United States

Lat 40.098238, Long -104.981853

04/13/2026 09:26 GMT-06:00

ECMC - Environmental Inspection



62°F

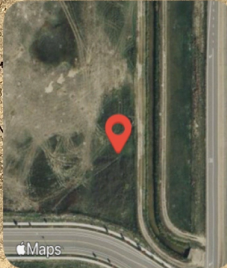
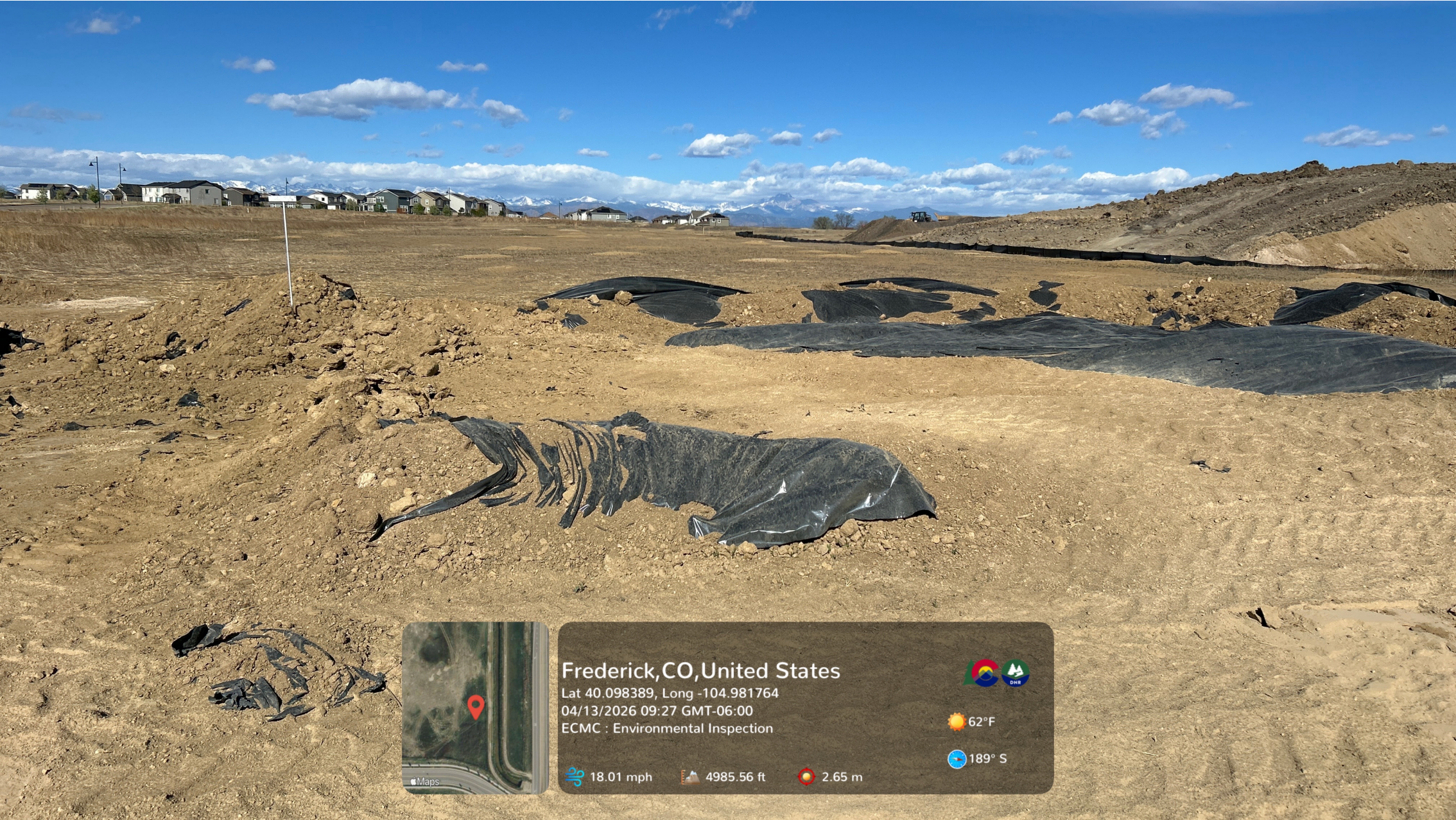
65° NE

18.01 mph

4987.04 ft

4.49 m

Soil stockpile marked "contaminated". Much of the soil has been removed from the contaminated stockpile. Some stockpiled, contaminated soil and the liner remain on location.



**Frederick, CO, United States**  
Lat 40.098389, Long -104.981764  
04/13/2026 09:27 GMT-06:00  
ECMC : Environmental Inspection

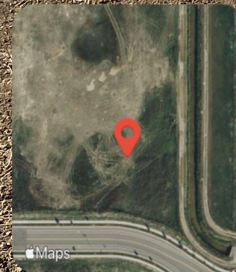
 

 62°F

 189° S

 18.01 mph  4985.56 ft  2.65 m

Soil stockpile marked "clean". No stormwater BMPs are visible at the clean stockpile.



Frederick, CO, United States

Lat 40.098358, Long -104.982027

04/13/2026 09:28 GMT-06:00

ECMC - Environmental Inspection



62°F

95° E

18.01 mph

4988.98 ft

4.22 m



### Frederick, CO, United States

Lat 40.098409, Long -104.981571  
04/13/2026 09:29 GMT-06:00  
ECMC - Environmental Inspection



62°F

5° N

18.01 mph

4984.91 ft

2.95 m