

Sullivan Ditch was dry at the time of the inspection. Operator personnel and equipment were on location at the time of inspection.



 **Frederick, CO, United States**
Lat 40.097682, Long -104.981409
03/25/2026 14:17 GMT-06:00
ECMC : Environmental Inspection

 86°F

 232° SW

 11.07 mph  4976.94 ft  9.41 m



Operator personnel were adding additional soil to the contaminated stockpile, driving equipment over the liner.



Stained soil and groundwater with free product are visible in situ.

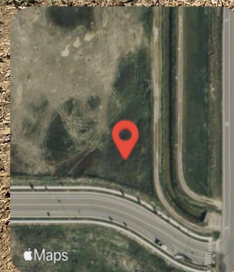


Frederick, CO, United States
Lat 40.098268, Long -104.981661
03/25/2026 14:17 GMT-06:00
ECMC: Environmental Inspection

11.07 mph 4993.08 ft 5.22 m 86°F 259° W



Stockpile marked "contaminated".



Frederick, CO, United States

Lat 40.098167, Long -104.981839
03/25/2026 14:21 GMT-06:00
ECMC : Environmental Inspection

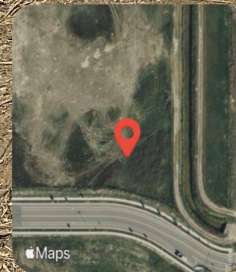


86°F

242° SW

11.07 mph 4996.52 ft 4.66 m

Stockpile marked "contaminated".



Frederick, CO, United States

Lat 40.098237, Long -104.981984

03/25/2026 14:22 GMT-06:00

ECMC : Environmental Inspection



86°F

281° W

11.07 mph

4990.88 ft

4.42 m

Additional liner has been added and the previously documented stockpile marked “contaminated” has been expanded.



Frederick, CO, United States

Lat 40.098487, Long -104.982067

03/25/2026 14:22 GMT-06:00

ECMC : Environmental Inspection



86°F

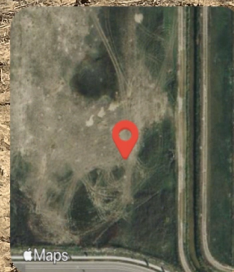
9° N

11.07 mph

4995.47 ft

4.91 m

Additional liner has been added and the previously documented stockpile marked “contaminated” has been expanded.



Frederick, CO, United States

Lat 40.098531, Long -104.982033

03/25/2026 14:22 GMT-06:00

ECMC : Environmental Inspection



86°F

40° NE

11.07 mph 4999.77 ft 5.94 m

Two flowlines are visible within the excavation.



Frederick, CO, United States
Lat 40.098268, Long -104.981866
03/25/2026 14:23 GMT-06:00
ECMC : Environmental Inspection

11.07 mph 4983.92 ft 3.54 m

86°F 322° NW

Apple Maps DNR