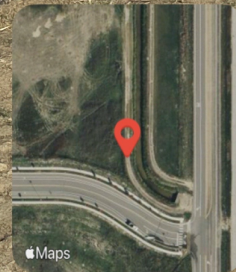


Sullivan Ditch was dry at the time of the inspection. Operator personnel and equipment were on location at the time of inspection.



### Frederick, CO, United States

Lat 40.098077, Long -104.981591  
03/24/2026 09:10 GMT-06:00  
ECMC : Environmental Inspection



60°F

249° W

5.06 mph

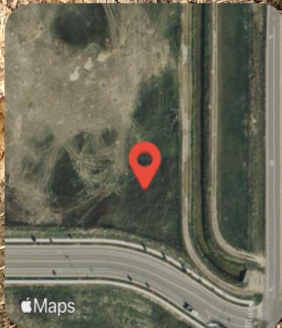
4982.94 ft

3.54 m

Stained soil and groundwater with free product are visible in situ.



Two flowlines are visible within the excavation.



### Frederick, CO, United States

Lat 40.098239, Long -104.981856  
03/24/2026 09:16 GMT-06:00  
ECMC : Environmental Inspection



60°F

65° NE

5.06 mph

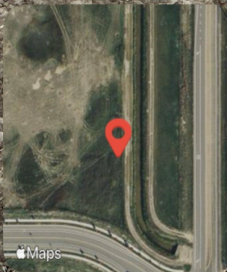
4989.6 ft

7.74 m

Maps

Groundwater with free product is visible at the base of the excavation at the spill location. Operator personnel and equipment were on location at the time of inspection. Operator personnel were using a hydrovac to skim free product off of groundwater at the base of the excavation.





### Frederick, CO, United States

Lat 40.098351, Long -104.981662  
03/24/2026 09:17 GMT-06:00  
ECMC : Environmental Inspection



60° F

106° E

5.06 mph

4990.68 ft

5.44 m

Stained soil is visible in situ.

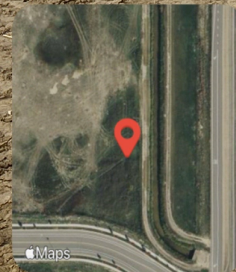


**Frederick, CO, United States**  
Lat 40.098342, Long -104.981641  
03/24/2026 09:17 GMT-06:00  
ECMC: Environmental Inspection

5.06 mph   4989.53 ft   5.2 m

60°F   137° SE

A liner is visible under the contaminated stockpile but has been overtopped by soil in some areas.



### Frederick, CO, United States

Lat 40.098375, Long -104.981729  
03/24/2026 09:17 GMT-06:00  
ECMC : Environmental Inspection



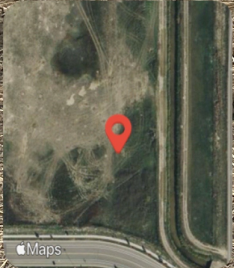
60°F

159° SE

5.06 mph

4991.67 ft

4.34 m



### Frederick, CO, United States

Lat 40.098455, Long -104.981937  
03/24/2026 09:18 GMT-06:00  
ECMC : Environmental Inspection



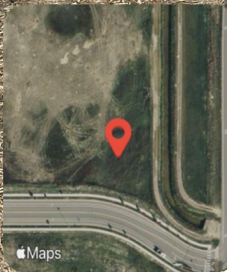
60°F

75° E

5.06 mph

4993.47 ft

4.95 m



### Frederick, CO, United States

Lat 40.098217, Long -104.981888  
03/24/2026 09:18 GMT-06:00  
ECMC : Environmental Inspection



60°F

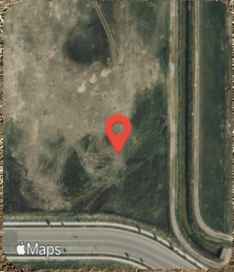
273° W

5.06 mph

4991-14 ft

4.27 m

Stockpile marked "clean".



**Frederick, CO, United States**

Lat 40.098388, Long -104.982026  
03/24/2026 09:19 GMT-06:00  
ECMC : Environmental Inspection



60°F

104° E

5.06 mph 4991.11 ft 3.7 m