

**U P Monaghan 1**  
**39.814572 / -104.689824**  
**05-001-05102**

**U P Monaghan 1 Procedure**

1. Survey and locate plugged wellbore. Set a stake and record as-drilled GPS coordinates.
2. Excavate around wellbore to expose the top of the surface casing.
3. Cut existing cap off wellbore. Weld a slip collar to 9-5/8" casing and necessary length of casing to reach ground level. Weld another 9-5/8" slip collar.
4. MIRU workover rig.
5. Install wellhead and BOP. Test BOP.
6. PU and RIH with 7-7/8" tricone bit, (x4) 3-1/2" drill collars, and 2-7/8", 6.5#, L80, EUE workstring.
7. Drill out 1st surface cement plug and circulate hole clean.
8. Continue drilling or RIH to top of 2<sup>nd</sup> surface casing plug. Record depth of plug.
9. Pressure test surface casing to 250 psi. If surface casing fails pressure test, contact engineer and hunt holes.
10. After pressure test of surface casing, drill out surface casing plug. If pressure is encountered below surface casing plug, circulate hole with mud or kill fluid until well is dead or blown down.
11. Continue drilling or RIH to top of Plug #3. Record depth of plug. POOH. **Call engineer with tag depth before proceeding.**
12. Rig up casing crew and RIH with 5-1/2", 15.5# J-55 casing to 1540' (adjust to 5' above tag depth) and set casing.
13. Rig up wireline and RIH with gyro 1540'. LOOH, send results to engineer.
14. RU cement crew, pressure test lines to 4,500 psi, and pump class G cement (50 sks) to cement casing in place.
15. Wait 8 hours for cement to set.
16. PU and RIH with 4-3/4" PDC bit, 3-1/2" mud motor, 3-1/2" monel collar, MWD, (x4) 3-1/2" drill collars, and 2-7/8" PH6 workstring and drill out cement to 1540'.
17. Continue drilling, use gyro results and directional tools to keep workstring as vertical as possible, drill down through cement plug into open hole, run in 200' of open hole and circulate hole clean.
18. POOH and LD BHA.
19. Rig up wireline and RIH with CBL to 1540'. LOOH, send results to engineer.
20. PU and RIH with mule shoe and 2-7/8" L80 tubing down and tag the top of casing stub (~3000'). Tag and record depth of stub.

**Procedure assumes Stub Tag Depth at 3000', adjust first plug depths accordingly**

21. RU cement crew, pressure test lines to 4,500 psi, and spot plug from 3000'-2700' with class G cement (100 sks) to cover the casing stub.
  - **FROM THIS POINT MOVING FORWARD:** Circulate out all hydrocarbons from well and clean wellbore. Must wait a sufficient time on all subsequent plugs to confirm static conditions. If at any time after placing this plug there is evidence of pressure or of fluid migration, contact engineer before continuing operations.
22. POOH to surface casing. Wait 4 hours and tag TOC. Record tag depth. If tag is deeper than 2700', contact engineer.
23. POOH and spot plug from 1834'-1500' with class G cement (100 sks) to cover the Fox Hills formation and 5-1/2" casing shoe.
24. POOH to surface casing. Wait 4 hours and tag TOC. Record tag depth. If tag is deeper than 1500', contact engineer.
25. POOH and SB.
26. RBIH with jet cutters on wireline and cut casing at 1440' (adjust to 5' above TOC found with CBL).
27. POOH and RDMO wireline.

28. POOH with casing and LD.
29. PU and RBIH with mule shoe and workstring to 1500' (adjust depth to plug tag depth).
30. RU cement crew, pressure test lines to 4,500 psi, and spot plug from 1500'-1400' with class G cement (21 sks) to cover the casing stub. **Verify cement volume with engineer before pumping cement, volume may adjust depending on tag depths.**
  - **IF CIRCULATION IS NOT MAINTAINED WHILE PUMPING PLUG:**
    - POOH to surface casing. Wait 4 hours and tag TOC. Record tag depth. If tag is deeper than 1400', contact engineer.
31. POOH and spot plug from 951'-638' with class G cement (100 sks) to cover the Upper Arapahoe formation.
32. POOH to surface casing. Wait 4 hours and tag TOC. Record tag depth. If tag is deeper than 638', contact engineer.
33. POOH and spot plug from 250' to surface with class G cement (92 sks).
  - **IF CEMENT DOES NOT RETURN TO SURFACE:**
    - i. POOH. Wait 4 hours and tag TOC. Record tag depth. If tag is deeper than 150', contact engineer.
    - ii. Pump 15.8 ppg (1.15 cuft/sk) Class G neat cement at tag depth to surface.
34. RDMO. Top off cement after rig has moved, if necessary.
35. After surface plug has set, cut casing to 5' below ground level and weld on a plate to seal the well.
36. Inscribe the well's legal location, well name and number, and API number on the plate as shown:

660' FSL, 1980' FWL, SESW Sec 5, T3S, R65W
U P Monaghan 1
05-001-05102

37. Photograph welded name plate and send to engineer before proceeding.
38. After confirmation from engineer is received, backfill hole and reclaim surface to original conditions.
39. Cover up the well and remediate the disturbed area.

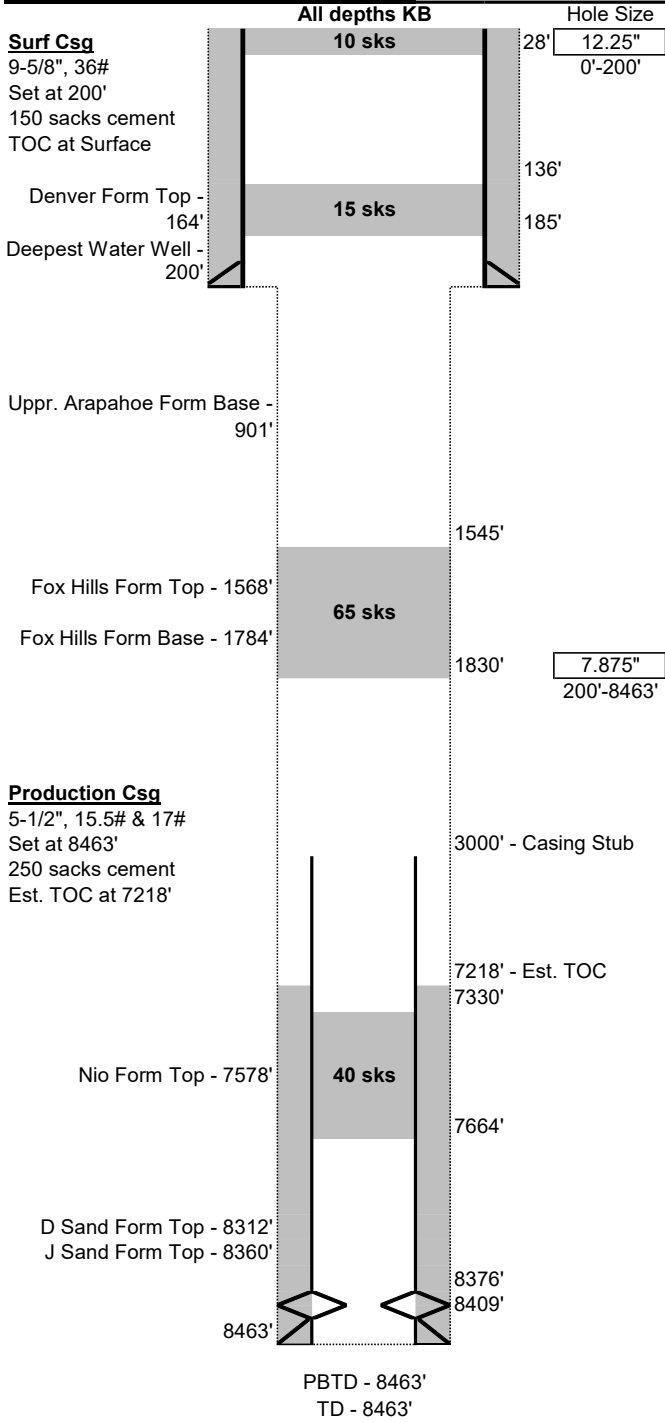
### U P Monaghan 1 Cement Plug Table

CEMENT PLUG TABLE									
Plug Number	Plug Status	Target	Plug Bottom Depth	Plug Top Depth	Cement Class	Yield (ft <sup>3</sup> /sk)	Number of Sacks	Must Be Tagged?	Maximum Tag Depth
1	Existing	Niobrara	7664'	7330'	Unknown	Unknown	40	No	N/A
2	New	Casing Stub	3000'	2700'	G	1.15	100	Yes	2700'
3	New	Fox Hills	1834'	1500'	G	1.15	100	Yes	1500'
4	New	Casing Stub	1500'	1400'	G	1.15	21	Possibly	1400'
5	New	Upper Arap.	951'	638'	G	1.15	100	Yes	638'
6	New	Surface	250'	Surface	G	1.15	92	Possibly	150'
<b>TOTAL NEW SKS OF CEMENT REQUIRED:</b>							<b>413</b>		

### Current Wellbore Schematic

Well Name: U P Monaghan 1  
 Location: 660' FSL, 1980' FWL, SESW Sec 5, T3S, R65W  
 County: Adams  
 API #: 05-001-05102  
 Co-ordinates: 39.814572 / -104.689824  
 Elevations: GROUND: --  
                     KB: 5423'  
 Depths (KB): PBTD: 8463'  
                     TD: 8463'

Date Prepared: 9/26/2024  
 Last Updated: 3/30/2026  
 Spud Date: 5/22/1959  
 Completion Start Date: 1/1/1957  
 Last Workover Date: 8/19/1974



**Surface Casing:**  
 Drilled surface hole of unknown size (assumed to be 12-1/4") to 200'  
 Set 9-5/8", 36# J-55 casing at 200'  
 Cemented with 150 sks  
 TOC at surface

**Production Casing:**  
 Drilled production hole of unknown size (assumed to be 7-7/8") to 8,463'  
 Set 5-1/2", 15.5# J-55 & 17# N-80 casing at 8,463'  
 Cemented with 250 sks  
 Est. TOC at 7,218'  
 Casing cut at 3,000' and pulled to surface during original P&A

**Open Hole:**  
 Assumed 7-7/8" Open Hole from 200'-3,000', expected to be washed out

**Tubing:**  
 None

**Rods:**  
 None

**Perforations:**  
 Perfs: 132 (4SPF) - holes from 8,376'-8,409'  
 Perfs: 6 (1SPF) - holes at 8,378', 8,386', 8,390', 8,394', 8,398' and 8,402'

**P&A Plugs:**  
 1. 10 sks from 28' to surface  
 2. 15 sks from 136'-185'  
 3. 65 sks from 1545'-1830'  
 4. 40 sks from 7330'-7664'

**Additional Notes:**

**Initial Potential Test:**

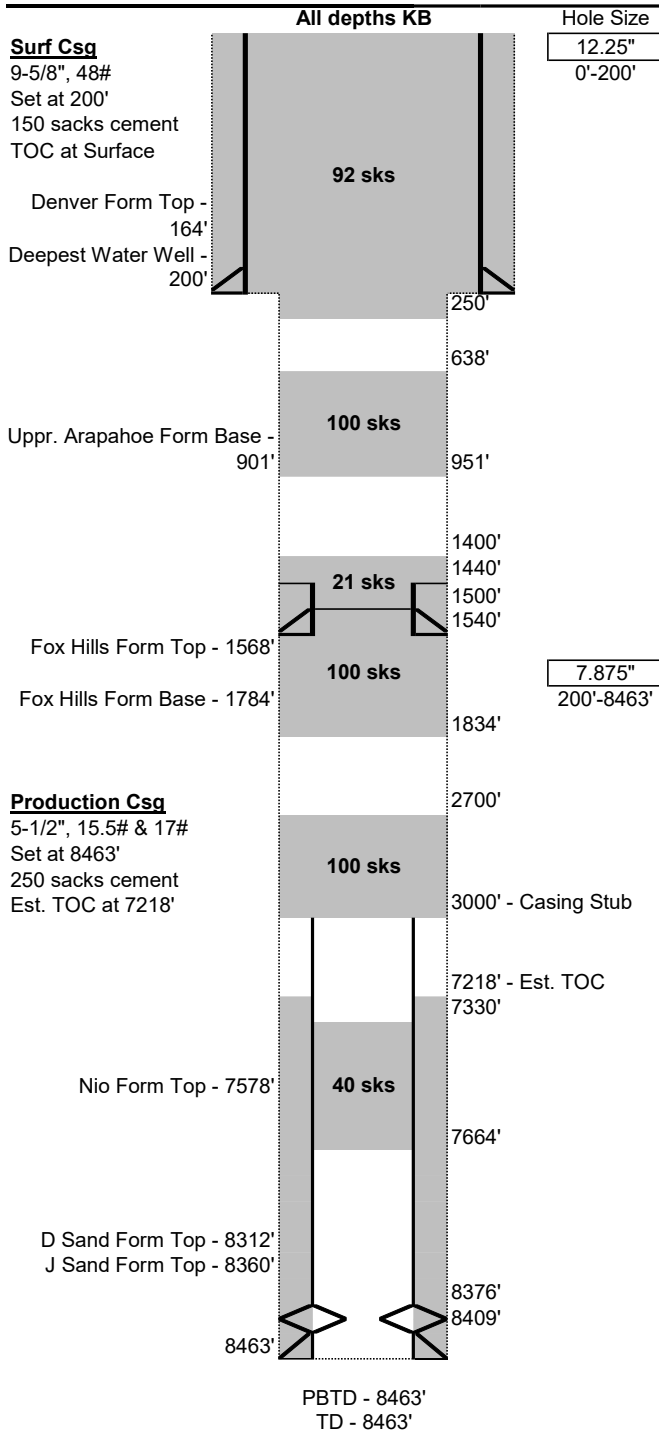
**Formation Tops:**

Denver	164'
Deepest Water Well	200'
Upper Arapahoe (Base)	901'
Fox Hills	1568'
Fox Hills (Base)	1784'
Niobrara	7578'
D Sand	8312'
J Sand	8360'

**Approved Wellbore Schematic**

Well Name: U P Monaghan 1  
 Location: 660' FSL, 1980' FWL, SESW Sec 5, T3S, R65W  
 County: Adams  
 API #: 05-001-05102  
 Co-ordinates: 39.814572 / -104.689824  
 Elevations: GROUND: --  
 KB: 5423'  
 Depths (KB): PBTD: 8463'  
 TD: 8463'

Date Prepared: 9/26/2024  
 Last Updated: 4/22/2026  
 Spud Date: 5/22/1959  
 Completion Start Date: 1/1/1957  
 Last Workover Date: 8/19/1974



**Surface Casing:**  
 Drilled surface hole of unknown size (assumed to be 12-1/4") to 200'  
 Set 9-5/8", 48# J-55 casing at 200'  
 Cemented with 150 sks  
 TOC at surface

**Production Casing:**  
 Drilled production hole of unknown size (assumed to be 7-7/8") to 8,463'  
 Set 5-1/2", 15.5# J-55 & 17# N-80 casing at 8,463'  
 Cemented with 250 sks  
 Est. TOC at 7,218'  
 Casing cut at 3,000' and pulled to surface during original P&A

**Open Hole:**  
 Assumed 7-7/8" Open Hole from 200'-3,000', expected to be washed out

**Rods & Tubing:**  
 None

**Perforations:**  
 Perfs: 132 (4SPF) - holes from 8,376'-8,409'  
 Perfs: 6 (1SPF) - holes at 8,378', 8,386', 8,390', 8,394', 8,398' and 8,402'

**P&A Plugs:**  
 1. 40 sks from 7,330'-7,664' (existing)  
 2. 100 sks Class G (1.15 cuft/sk) from 2,700'-3,000' (new, tag)  
 3. 100 sks Class G (1.15 cuft/sk) from 1,500'-1,834' (new, tag)  
 4. 21 sks Class G (1.15 cuft/sk) from 1,400'-1,500' (new)  
 5. 100 sks Class G (1.15 cuft/sk) from 638'-951' (new, tag)  
 6. 92 sks Class G (1.15 cuft/sk) from 250' to surface (new)

**Additional Notes:**  
 Will run 5-1/2" 15.5# J-55 casing to 1540' and will cement in place with 50 sks cement to act as guide while drilling out existing Fox Hills plug. Will cut casing above TOC (est. 1440') and pull.

**Initial Potential Test:**

**Formation Tops:**

Denver	164'
Deepest Water Well	200'
Upper Arapahoe (Base)	901'
Fox Hills	1568'
Fox Hills (Base)	1784'
Niobrara	7578'
D Sand	8312'
J Sand	8360'