

ALABASTER #11-8

ECMC-style Wellbore Diagram

API 00-007-108642	LEGAL LOCATION NWNW Sec 8 T33S R66W 6 PM	COUNTY / FIELD LAS ANIMAS / PURGATOIRE RIVER	TYPE / DATE Current / 2026-01-18
-----------------------------	--	--	--

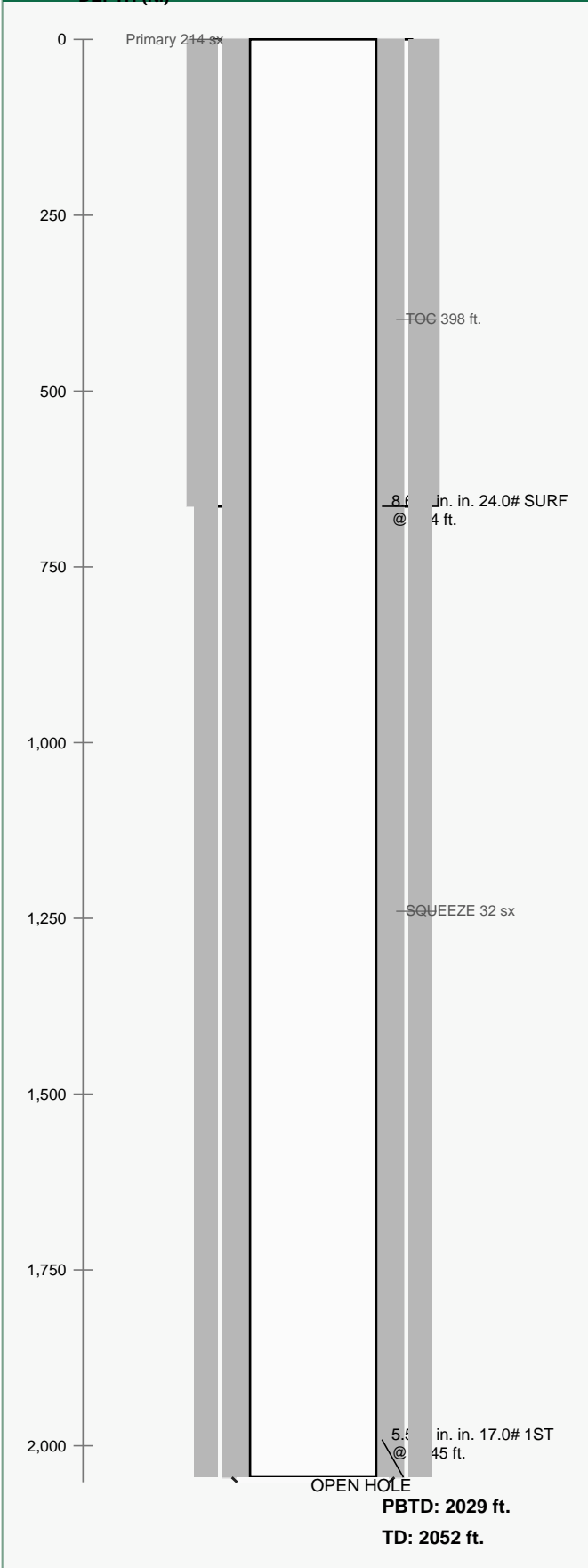
WELL / GEOLOGY

Surface Elev.: 7249 ft.
Facility Status: PR
Spud Date: 1/17/2006
Completion Date: 1/19/2006
Planned Footage: 1249FNL 215 FWL
As Drilled: Footages Not Available
Logs: COMPENSATED DENSITY/NEUTRON, CEMENT BOND, SINGLE INDUCTION AND MUD

FORMATION TOPS

No formation data listed

SCHEMATIC DEPTH (ft.)



ANNOTATIONS / RECORDS

CASING

String 1: SURF, hole 11.000 in., casing 8.625 in., top 0 ft., set 664 ft., wt 24.0, src ACTUAL, tools -
String 2: 1ST, hole 7.875 in., casing 5.500 in., top 0 ft., set 2045 ft., wt 17.0, src ACTUAL, tools -
String 3: CONDUCTOR, hole 14.750 in., casing 12.750 in., top 0 ft., set -, wt -, src ACTUAL, tools -
String 4: CONDUCTOR, hole 14.750 in., casing 12.750 in., top 0 ft., set -, wt -, src ACTUAL, tools -
See continuation page for all casing records.

CEMENT

Record 1: Primary, 214 sx, top 0 ft., bottom 664 ft., method CBL, yield -, slurry wt -
Record 2: Primary, 50 sx, top 398 ft., bottom 2045 ft., method CBL, yield -, slurry wt -
Record 11: SQUEEZE, 32 sx, top 1160 ft., bottom 1320 ft., method CALC, yield -, slurry wt -
Record 12: SQUEEZE, 32 sx, top 1160 ft., bottom 1320 ft., method CALC, yield -, slurry wt -
Record 13: SQUEEZE, 32 sx, top 1160 ft., bottom 1320 ft., method CALC, yield -, slurry wt -

PERFORATIONS

OPEN HOLE COMPLETION - no perforation rows listed in workbook

DOWNHOLE / P&A

No additional plugs / tools / tubing rows listed

LEGEND

- Cement
- Casing
- Open Hole
- Perforations

Note: All depths reference workbook values. Open hole is shown only when workbook perforations are absent and casing-to-TD geometry indicates an uncased interval.

CASING

String 1: SURF, hole 11.000 in., casing 8.625 in., top 0 ft., set 664 ft., wt 24.0, src ACTUAL, tools -

String 2: 1ST, hole 7.875 in., casing 5.500 in., top 0 ft., set 2045 ft., wt 17.0, src ACTUAL, tools -

String 3: CONDUCTOR, hole 14.750 in., casing 12.750 in., top 0 ft., set -, wt -, src ACTUAL, tools -

String 4: CONDUCTOR, hole 14.750 in., casing 12.750 in., top 0 ft., set -, wt -, src ACTUAL, tools -

String 5: CONDUCTOR, hole 14.750 in., casing 12.750 in., top 0 ft., set -, wt -, src ACTUAL, tools -

CEMENT

Record 1: Primary, 214 sx, top 0 ft., bottom 664 ft., method CBL, yield -, slurry wt -

Record 2: Primary, 50 sx, top 398 ft., bottom 2045 ft., method CBL, yield -, slurry wt -

Record 11: SQUEEZE, 32 sx, top 1160 ft., bottom 1320 ft., method CALC, yield -, slurry wt -

Record 12: SQUEEZE, 32 sx, top 1160 ft., bottom 1320 ft., method CALC, yield -, slurry wt -

Record 13: SQUEEZE, 32 sx, top 1160 ft., bottom 1320 ft., method CALC, yield -, slurry wt -

PERFORATIONS

OPEN HOLE COMPLETION - no perforation rows listed in workbook

DOWNHOLE / P&A

No additional plugs / tools / tubing rows listed