

<b>API</b> 00-007-107874	<b>LEGAL LOCATION</b> NESW Sec 34 T34S R65W 6 PM	<b>COUNTY / FIELD</b> LAS ANIMAS / PURGATOIRE RIVER	<b>TYPE / DATE</b> Current / 2026-01-18
-----------------------------	---	--	--

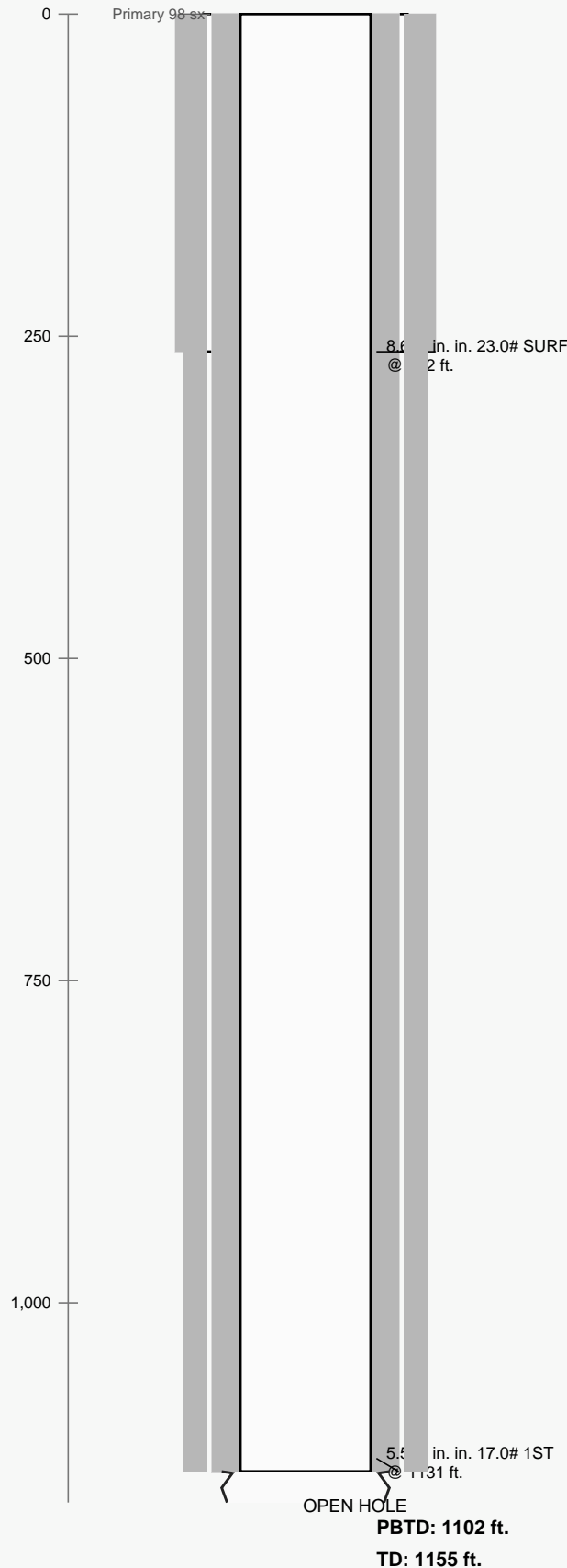
## WELL / GEOLOGY

**Surface Elev.:** 6938 ft.  
**Facility Status:** PR  
**Spud Date:** 12/19/2003  
**Completion Date:** 3/3/2004  
**Planned Footage:** 2351FSL 1870 FWL  
**As Drilled:** Footages Not Available  
**Logs:** COMPENSTARED DENSITY, CEMENT BOND, MUD

### FORMATION TOPS

No formation data listed

## SCHEMATIC DEPTH (ft.)



## ANNOTATIONS / RECORDS

### CASING

String 1: SURF, hole 11.000 in., casing 8.625 in., top 0 ft., set 262 ft., wt 23.0, src ACTUAL, tools -  
 String 2: 1ST, hole 7.875 in., casing 5.500 in., top 0 ft., set 1131 ft., wt 17.0, src ACTUAL, tools -

### CEMENT

Record 1: Primary, 98 sx, top 0 ft., bottom 262 ft., method -, yield -, slurry wt -  
 Record 2: Primary, 206 sx, top 0 ft., bottom 1131 ft., method CBL, yield -, slurry wt -

### PERFORATIONS

OPEN HOLE COMPLETION - no perforation rows listed in workbook

### DOWNHOLE / P&A

No additional plugs / tools / tubing rows listed

### LEGEND

- Cement
- Casing
- Open Hole
- Perforations