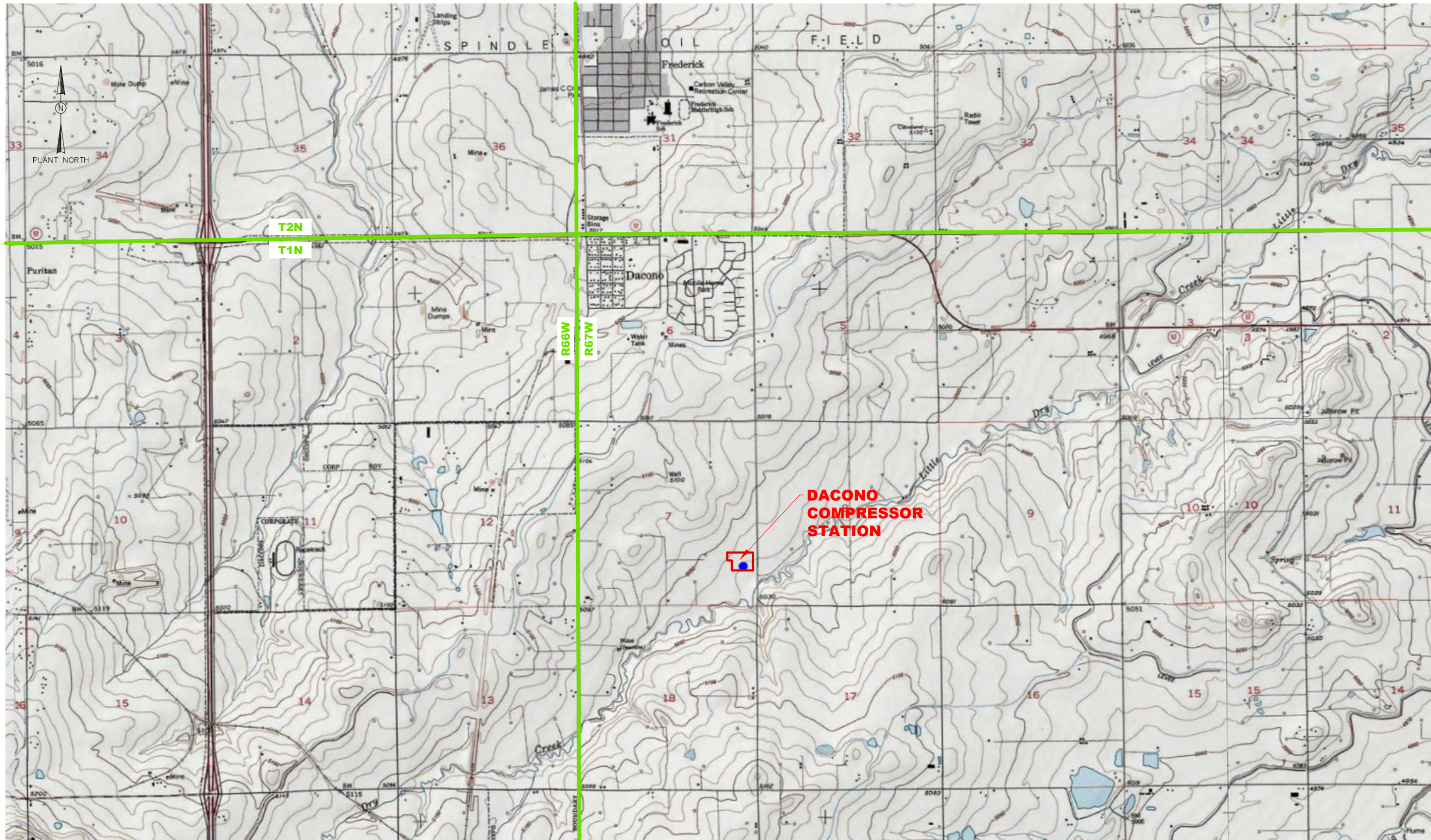


THIS DRAWING AND THE DESIGN IT COVERS ARE CONFIDENTIAL AND REMAIN THE PROPERTY OF ANADARKO PETROLEUM CORPORATION AND SHALL NOT BE DISCLOSED TO OTHERS OR REPRODUCED IN ANY MANNER OR USED FOR ANY PURPOSE WHATSOEVER EXCEPT BY WRITTEN PERMISSION BY THE OWNER.



- NOTES:
- PAD LOCATION
 - TOWNSHIP/RANGE OUTLINES

REFERENCE DRAWINGS		REVISIONS			
DWG. NO.	TITLE	NO.	DESCRIPTION	BY	DATE
		1	ISSUED FOR REVIEW	JRF	05/02/19
				CHK	05/02/19
				APP	05/02/19
				DED	05/02/19



DACONO COMPRESSOR STATION

FORM 12 LOCATION SITE PLAN
 LAT: 40.06109, LONG: -104.92505
 ALIQUOT: SE1/4, SECTION: 7, TOWNSHIP: 1N, RANGE: 67W

DRAWN BY: JRF	CREATION DATE: 05/02/19	AFE No.:
APPROVED: D. DAVID	APPR. DATE:	
	DWG. No.:	
SCALE: N.T.S.	19-DCNO-MP-08010	SHEET No. 10F 1

FILE LOCATION: L:\SharedData\Denver\Wildstream\Drafting\DWG\CO\DACONO COMPRESSOR STATION_19_8000 - MAPS & SURVEYS\19-DCNO-MP-08010.dwg
 LAST SAVED: 5/2/2019 11:17:08 AM BY: rank_janh (dave)