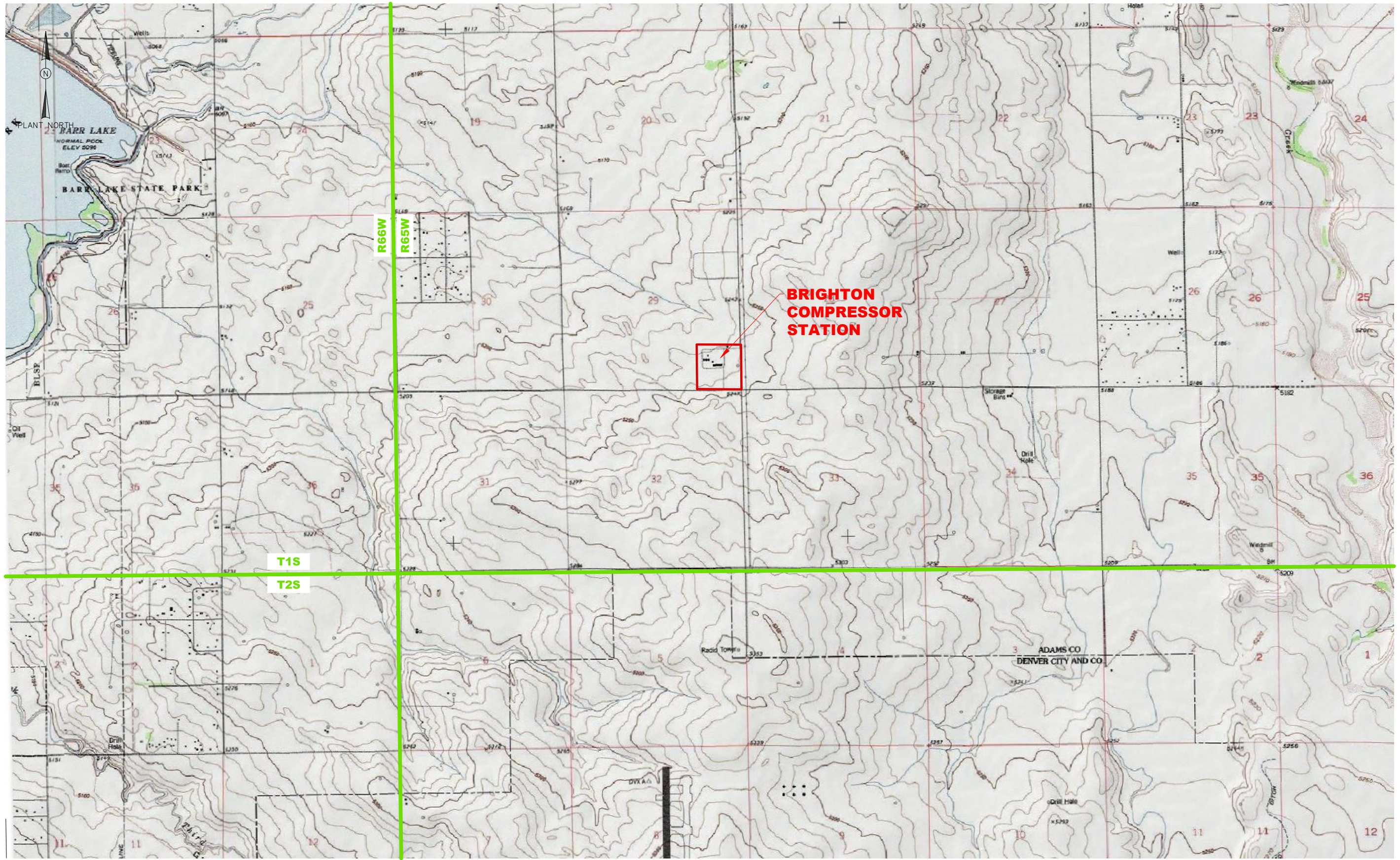


THIS DRAWING AND THE DESIGN IT COVERS ARE CONFIDENTIAL AND REMAIN THE PROPERTY OF ANADARKO PETROLEUM CORPORATION AND SHALL NOT BE DISCLOSED TO OTHERS OR REPRODUCED IN ANY MANNER OR USED FOR ANY PURPOSE WHATSOEVER EXCEPT BY WRITTEN PERMISSION BY THE OWNER.



PLOT STYLE: 1107.DWG  
LAST SAVED: 12/17/2018 BY: mark\_juan (dave)  
FILE LOCATION: N:\DWG\CO\BRIGHTON\_01-UPDATED\0000 - MAPS & SURVEYS\BRIGHT-MP-08010.dwg

- NOTES:
- PAD LOCATION
  - TOWNSHIP/RANGE OUTLINES

REFERENCE DRAWINGS		REVISIONS							
DWG. NO.	TITLE	NO.	DESCRIPTION	BY	DATE	CHK.	DATE	APPR.	DATE
		1	ISSUED FOR REVIEW	JRF	01/22/19	DED	01/22/19	DED	01/22/19



**BRIGHTON COMPRESSOR STATION**

**FORM 12 LOCATION SITE PLAN**  
 LAT: 39.9299539, LONG: -104.681689  
 ALIQUOT: SE1/4, SECTION: 29, TOWNSHIP: 1S, RANGE: 65W

DRAWN BY: JRF	CREATION DATE: 01/2/19	AFE No.:
APPROVED: D. DAVID	APPR. DATE:	
	DWG. No.:	
SCALE: N.T.S.	<b>BRIGH-MP-08010</b>	SHEET No. 10F 1

