

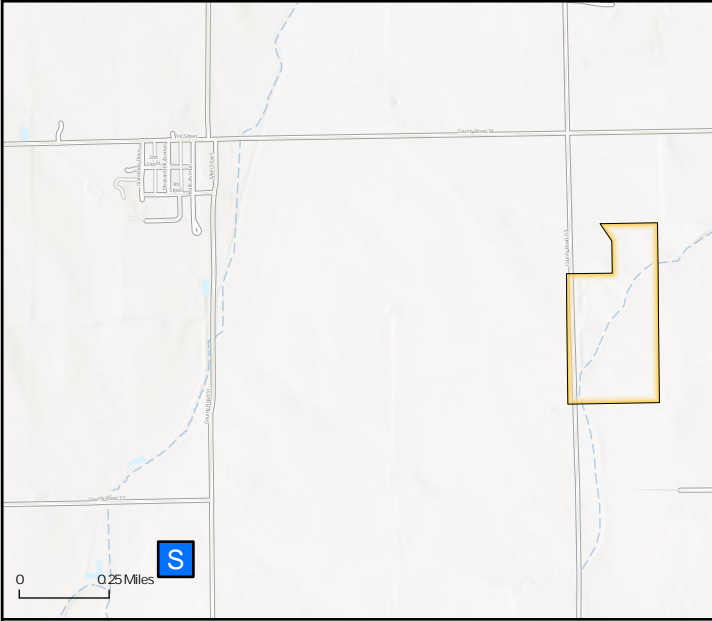
# Cumulative Soil Sampling Results

T031 | 70.86 acres

- Soil Sample Location
- RSSL/SSBC Exceedance\*
- Previously Excavated Area
- Incident Location
- Parcel Boundary

\*Organic exceedances include organic compounds found in the ESAP 2.0 that exceed applicable ECMC Table 915-1 Residential Soil Screening Levels (SSLs), USEPA Residential SSLs, and ECMC Table 915-1 cleanup concentrations for total petroleum hydrocarbons. Inorganic exceedances include inorganic compounds found in ESAP 2.0 that exceed applicable ECMC Table 915-1 Residential SSLs, USEPA Residential SSLs, ECMC Table 915-1 Soil Suitability for Remediation parameters, as well as Site-Specific Background Concentrations (SSBCs) for arsenic, thallium, and pH.

CTEH



Location	Sample Number	Analyte	Screening Value	Result	Units
T031S003	GACO0430T031S003	Boron (Hot Water Sol.)	2	5.36	mg/l
T031S003	GACO0430T031S003	Specific Conductance	4	6.27	mmhos/cm
T031S005	GACO0430T031S005	Sodium Absorption Ratio (SAR)	6	6.88	none
T031S005	GACO0430T031S005	Specific Conductance	4	4.42	mmhos/cm