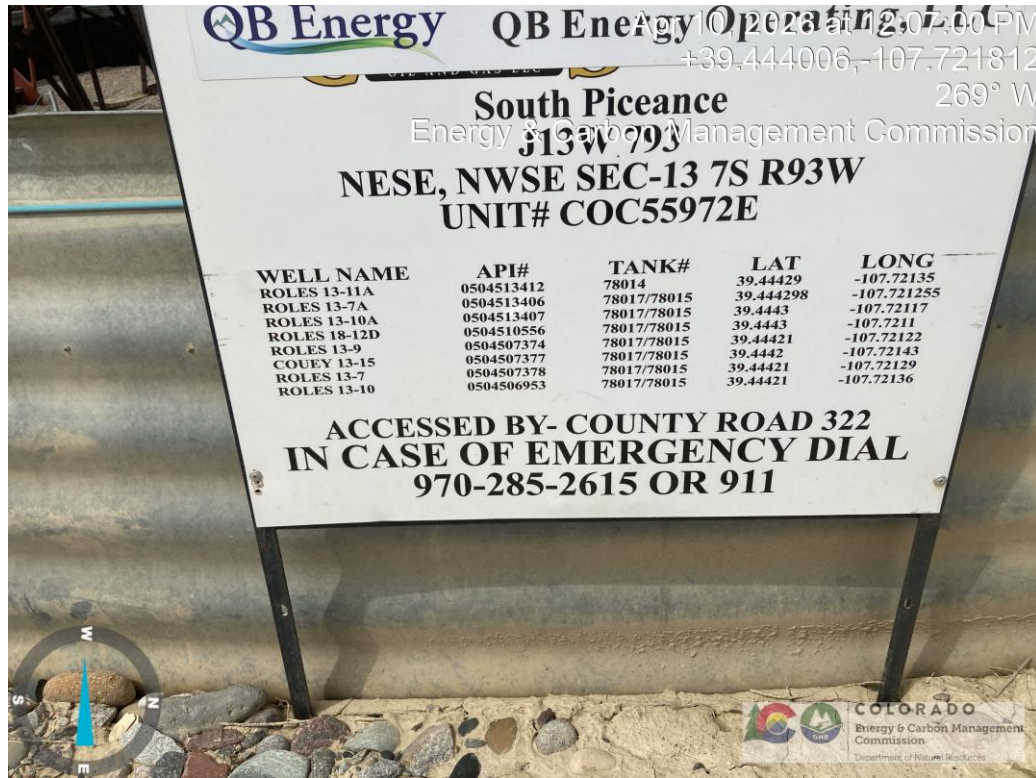


QB ENERGY OPERATING LLC ROLES-67S93W 13NESE (J13W) Facility # 334558



**QB ENERGY OPERATING LLC
ROLES-67S93W 13NESE (J13W)
Facility # 334558**



Methanol tank paint is in poor condition, and no smoking sign is in poor condition.



Methanol tank paint is in poor condition.

**QB ENERGY OPERATING LLC
ROLES-67S93W 13NESE (J13W)
Facility # 334558**



Methanol tank paint is in poor condition or lacks paint.



**Methanol tank paint is in poor condition or lacks paint.
Label is in poor condition.**

**QB ENERGY OPERATING LLC
ROLES-67S93W 13NESE (J13W)
Facility # 334558**

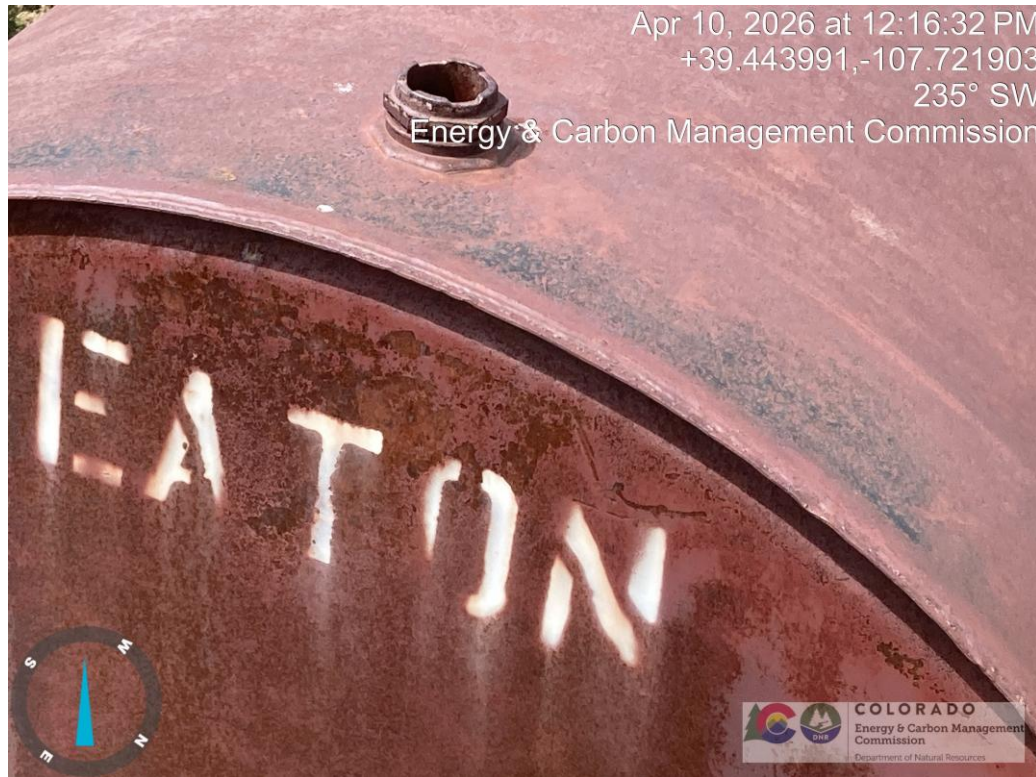


No lid on top of methanol tank.



No lid on top of methanol tank.

**QB ENERGY OPERATING LLC
ROLES-67S93W 13NESE (J13W)
Facility # 334558**

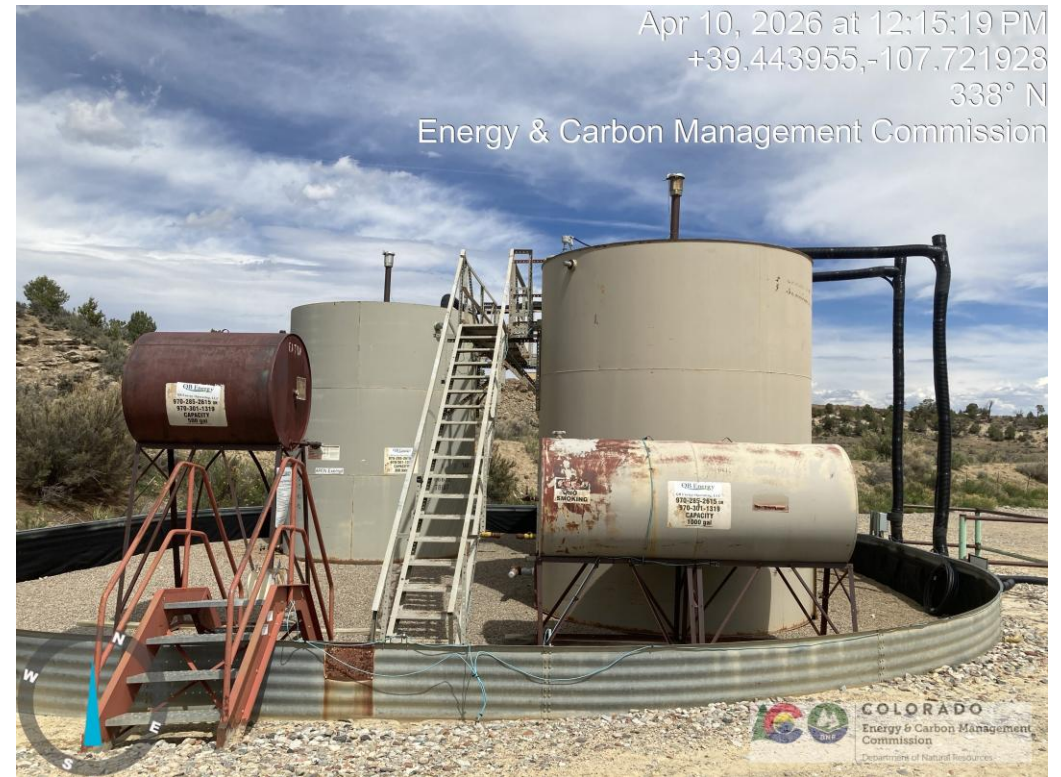


No lid on top of methanol tank.



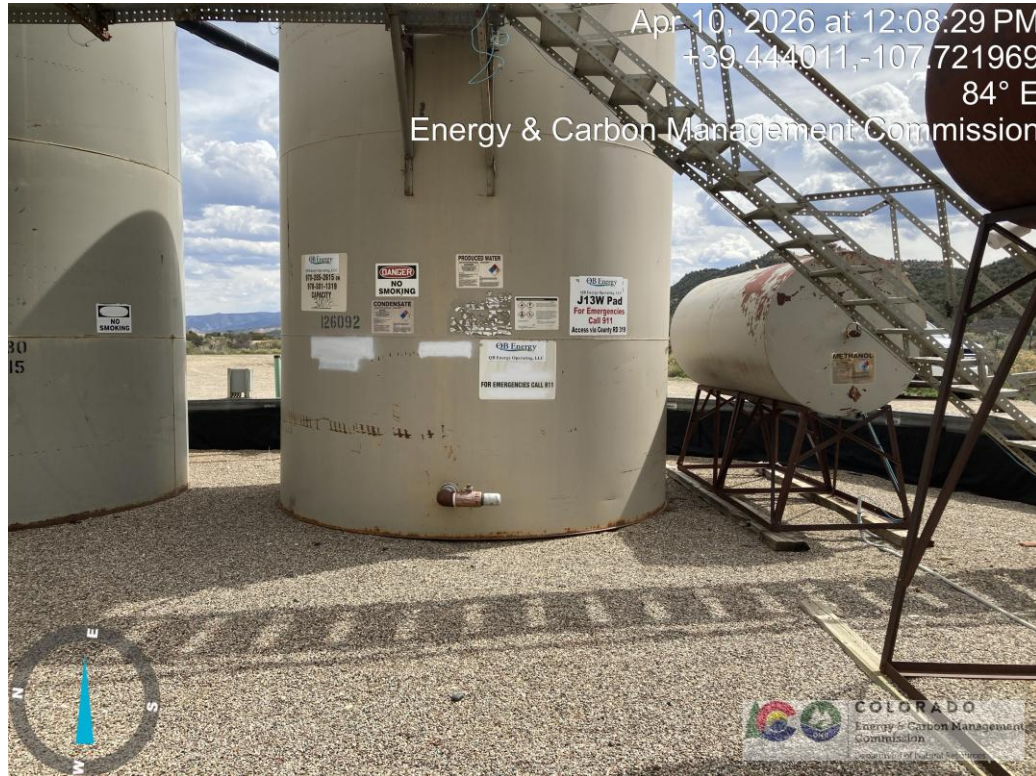
Paint is in poor condition.

**QB ENERGY OPERATING LLC
ROLES-67S93W 13NESE (J13W)
Facility # 334558**



Rusted old sign on metal tank battery berm.

**QB ENERGY OPERATING LLC
ROLES-67S93W 13NE5E (J13W)
Facility # 334558**



Rust around tank bottoms.



Rust around tank bottoms.

**QB ENERGY OPERATING LLC
ROLES-67S93W 13NESE (J13W)
Facility # 334558**



Rust around tank bottoms.



Rusted and flaking tank man hatch.

**QB ENERGY OPERATING LLC
ROLES-67S93W 13NESE (J13W)
Facility # 334558**



Rusted and flaking tank man hatch and bolts.



Paint deterioration and areas of rust.

**QB ENERGY OPERATING LLC
ROLES-67S93W 13NESE (J13W)
Facility # 334558**



Paint deterioration and areas of rust.



Paint deterioration and areas of rust.

**QB ENERGY OPERATING LLC
ROLES-67S93W 13NESE (J13W)
Facility # 334558**

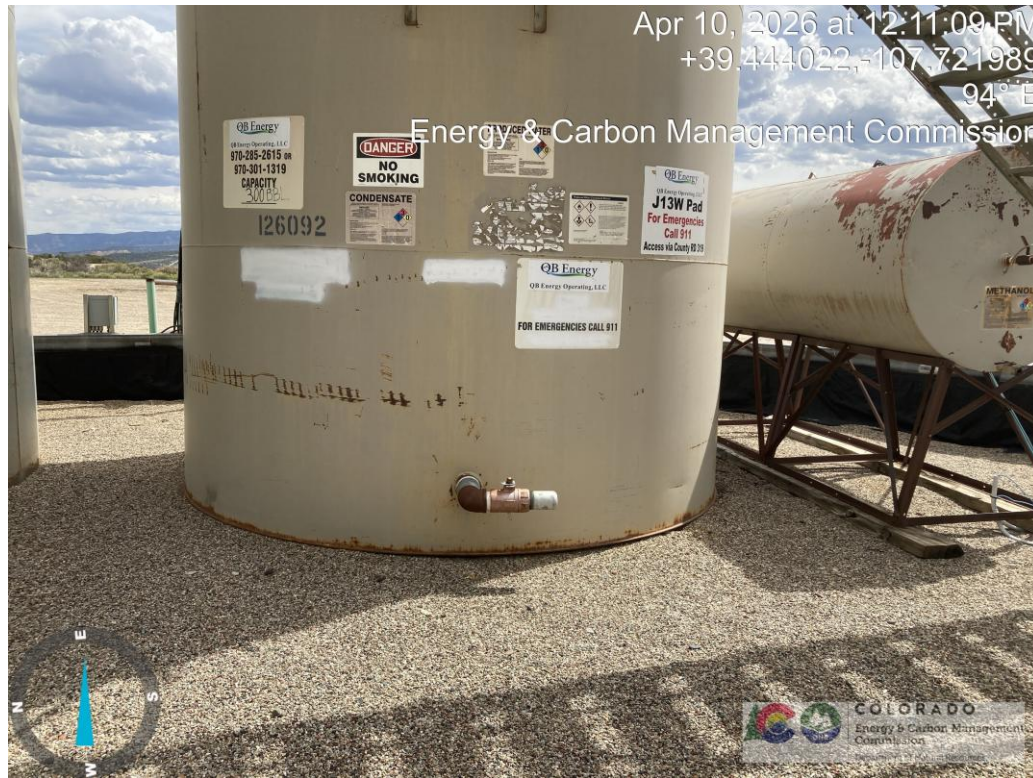


Paint deterioration and areas of rust.



Paint deterioration and areas of rust.

**QB ENERGY OPERATING LLC
ROLES-67S93W 13NESE (J13W)
Facility # 334558**



Paint deterioration and areas of rust.



Paint deterioration and areas of rust.

**QB ENERGY OPERATING LLC
ROLES-67S93W 13NESE (J13W)
Facility # 334558**

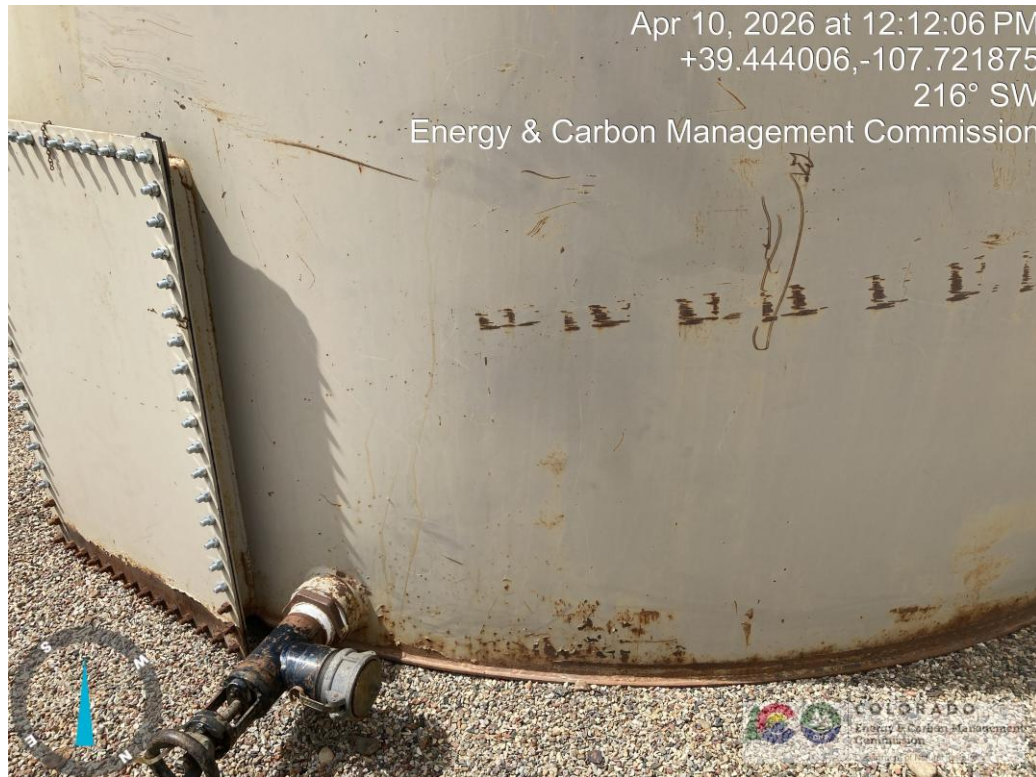


Paint deterioration and areas of rust.



Rusted and flaking tank man hatch and bolts.

**QB ENERGY OPERATING LLC
ROLES-67S93W 13NESE (J13W)
Facility # 334558**



Paint deterioration and areas of rust.



Paint deterioration and areas of rust.

**QB ENERGY OPERATING LLC
ROLES-67S93W 13NESE (J13W)
Facility # 334558**



Paint deterioration and areas of rust.



Paint deterioration and areas of rust.

**QB ENERGY OPERATING LLC
ROLES-67S93W 13NESE (J13W)
Facility # 334558**

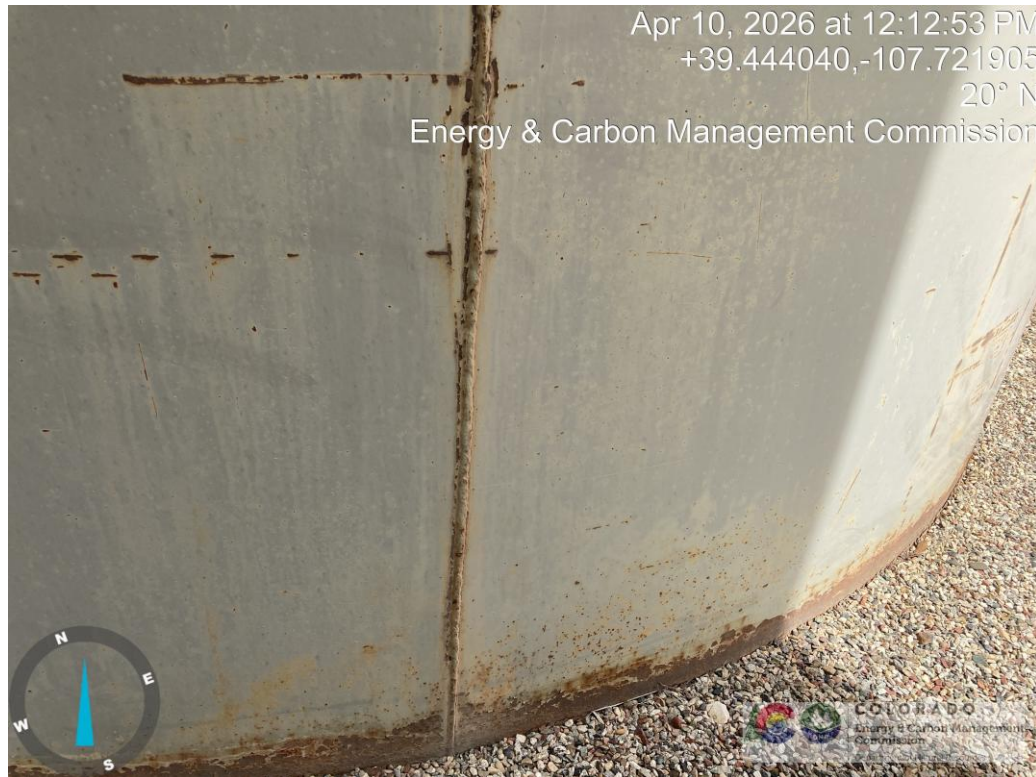


Paint deterioration and areas of rust.

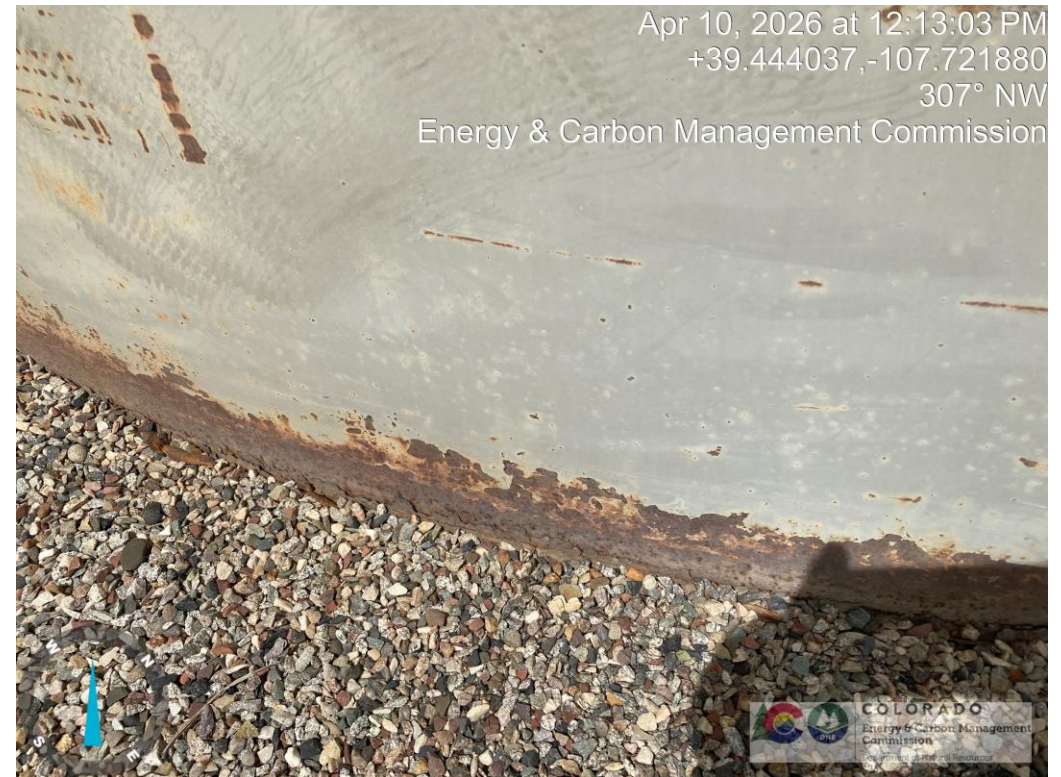


Paint deterioration and areas of rust.

**QB ENERGY OPERATING LLC
ROLES-67S93W 13NESE (J13W)
Facility # 334558**



Paint deterioration and areas of rust.



Paint deterioration and areas of rust.

**QB ENERGY OPERATING LLC
ROLES-67S93W 13NESE (J13W)
Facility # 334558**



Rusted and flaking tank man hatch and bolts.



Paint deterioration and areas of rust.

**QB ENERGY OPERATING LLC
ROLES-67S93W 13NESE (J13W)
Facility # 334558**



Rusted and flaking tank man hatch and bolts.



Rusted and flaking tank man hatch and bolts.

**QB ENERGY OPERATING LLC
ROLES-67S93W 13NESE (J13W)
Facility # 334558**



Paint deterioration and areas of rust.



Paint deterioration and areas of rust.

**QB ENERGY OPERATING LLC
ROLES-67S93W 13NESE (J13W)
Facility # 334558**



Top of tank is rusted out around the dumphline inlet.



Top of tank is rusted out around the dumphline inlet.

**QB ENERGY OPERATING LLC
ROLES-67S93W 13NESE (J13W)
Facility # 334558**



Top of tank is rusted out around the dumlaine inlet.



Top of tank is rusted out around the dumlaine inlet.

**QB ENERGY OPERATING LLC
ROLES-67S93W 13NESE (J13W)
Facility # 334558**



Top of tank is rusted out around the dumlaine inlet.



Rusted and tapped inlet fittings

**QB ENERGY OPERATING LLC
ROLES-67S93W 13NESE (J13W)
Facility # 334558**



Paint deterioration and areas of rust.

**QB ENERGY OPERATING LLC
ROLES-67S93W 13NESE (J13W)
Facility # 334558**



Paint deterioration and areas of rust.



Paint deterioration and areas of rust.

**QB ENERGY OPERATING LLC
ROLES-67S93W 13NESE (J13W)
Facility # 334558**



Spill/release area.



Spill/release area.

**QB ENERGY OPERATING LLC
ROLES-67S93W 13NESE (J13W)
Facility # 334558**



Spill/release area.



Spill/release area.

**QB ENERGY OPERATING LLC
ROLES-67S93W 13NESE (J13W)
Facility # 334558**



Spill/release area.



Spill/release area.

QB ENERGY OPERATING LLC ROLES-67S93W 13NESE (J13W) Facility # 334558



Unpainted flowlines and paint deterioration with areas of rust.

**QB ENERGY OPERATING LLC
ROLES-67S93W 13NESE (J13W)
Facility # 334558**



Unpainted flowlines and paint deterioration with areas of rust.



Unpainted flowlines and paint deterioration with areas of rust.

**QB ENERGY OPERATING LLC
ROLES-67S93W 13NESE (J13W)
Facility # 334558**



Unpainted flowlines and paint deterioration with areas of rust.



Unpainted flowlines and paint deterioration with areas of rust.

**QB ENERGY OPERATING LLC
ROLES-67S93W 13NESE (J13W)
Facility # 334558**



Unpainted flowlines and paint deterioration with areas of rust.



Unpainted flowlines and paint deterioration with areas of rust.

**QB ENERGY OPERATING LLC
ROLES-67S93W 13NESE (J13W)
Facility # 334558**



Unpainted flowlines and paint deterioration with areas of rust.



Unpainted flowlines and paint deterioration with areas of rust.

**QB ENERGY OPERATING LLC
ROLES-67S93W 13NESE (J13W)
Facility # 334558**

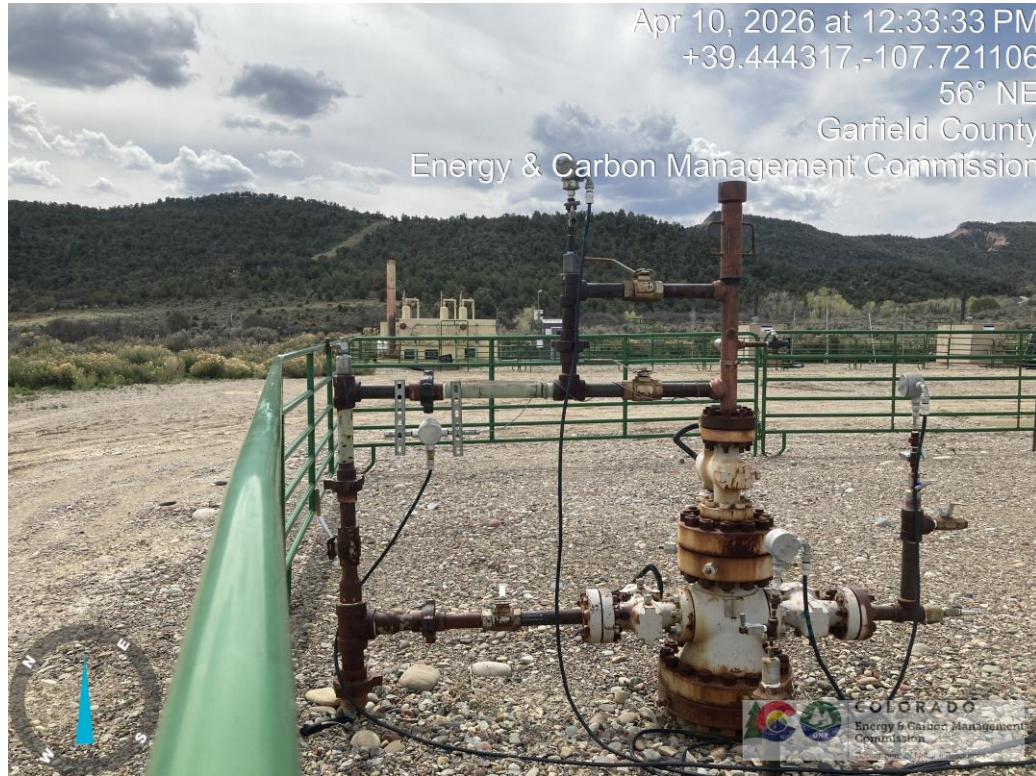


Unpainted flowlines and paint deterioration with areas of rust.



Unpainted flowlines and paint deterioration with areas of rust.

**QB ENERGY OPERATING LLC
ROLES-67S93W 13NESE (J13W)
Facility # 334558**



Unpainted and paint deterioration of flowlines and well head equipment with areas of rust.

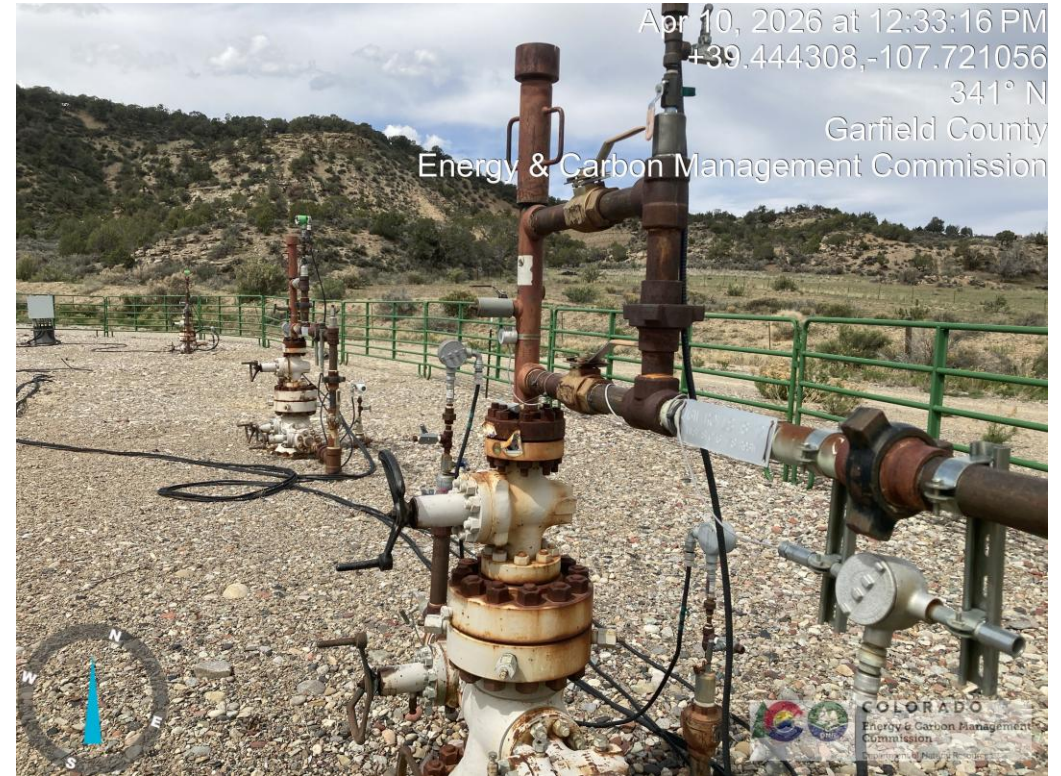


Unpainted and paint deterioration of flowlines and well head equipment with areas of rust.

**QB ENERGY OPERATING LLC
ROLES-67S93W 13NESE (J13W)
Facility # 334558**



Unpainted and paint deterioration of flowlines and well head equipment with areas of rust.



Unpainted and paint deterioration of flowlines and well head equipment with areas of rust.

**QB ENERGY OPERATING LLC
ROLES-67S93W 13NESE (J13W)
Facility # 334558**



Unpainted and paint deterioration of flowlines and well head equipment with areas of rust.

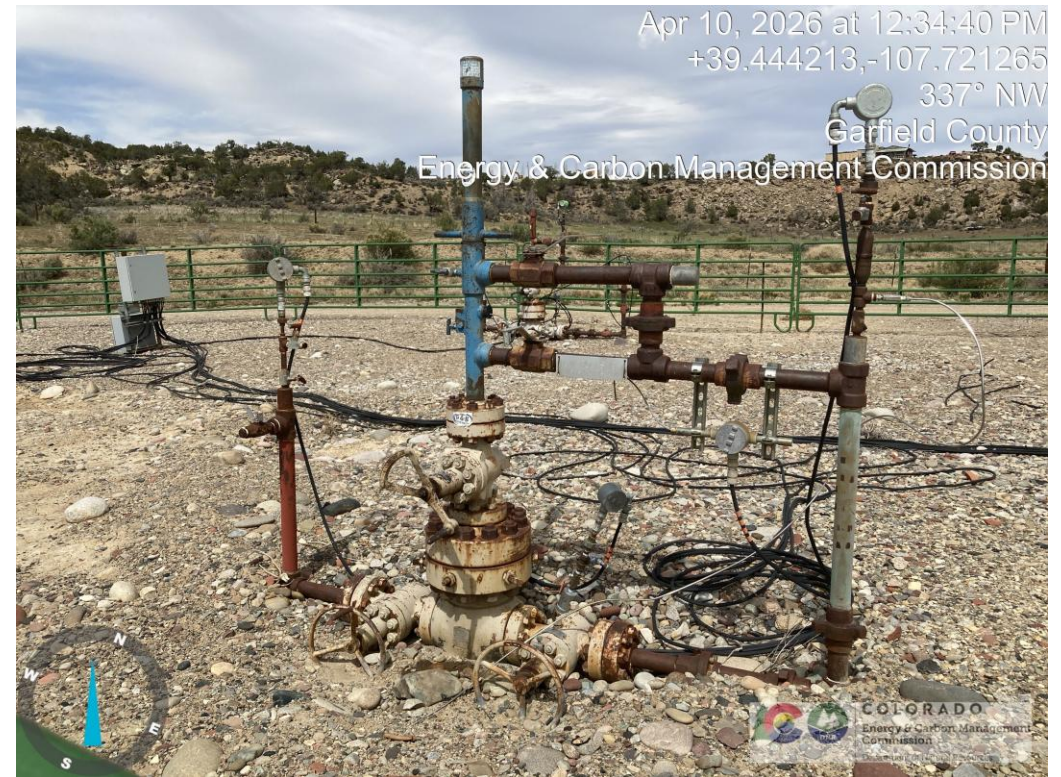


Unpainted and paint deterioration of flowlines and well head equipment with areas of rust.

**QB ENERGY OPERATING LLC
ROLES-67S93W 13NESE (J13W)
Facility # 334558**



Unpainted and paint deterioration of flowlines and well head equipment with areas of rust.

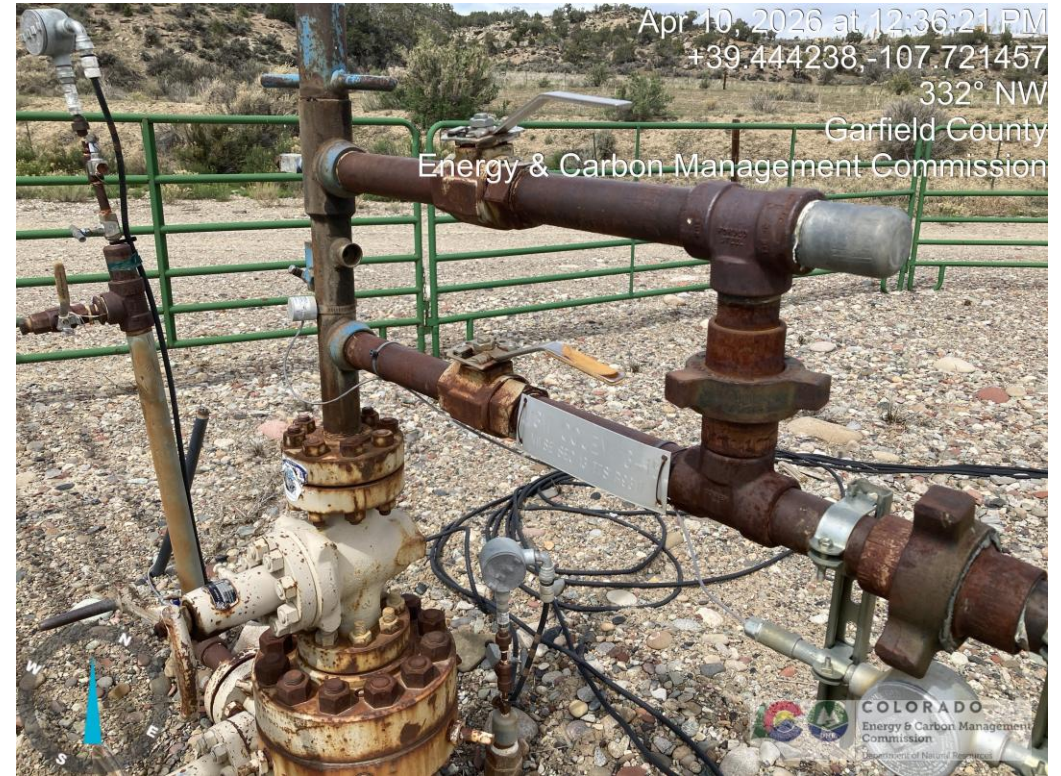


Unpainted and paint deterioration of flowlines and well head equipment with areas of rust.

**QB ENERGY OPERATING LLC
ROLES-67S93W 13NESE (J13W)
Facility # 334558**



Unpainted and paint deterioration of flowlines and well head equipment with areas of rust.



Unpainted and paint deterioration of flowlines and well head equipment with areas of rust.