

Sensor	Offset (ft)	Schematic	Description	Length (ft)	O.D. (in)	Weight (lb)
GR	15.00		GR-M&W (103)	3.00	3.50	50.00
LGRD	11.00		LGRD-M&W (49) Simlec Long Guard	3.50	3.50	40.00
SCAL	5.10		SWN-M&W-SP (SP-701)	10.50	4.00	190.00
SWN	4.45					
SP	0.20					

Dataset: desert eagle_red rocks 35-10.db: field/well/rag/pass1
 Total length: 17.00 ft
 Total weight: 280.00 lb
 O.D.: 4.00 in

Sensor	Offset (ft)	Schematic	Description	Length (ft)	O.D. (in)	Weight (lb)
GR	9.50		GR-M&W (105)	3.00	3.50	50.00
			CDL-M&W (308-05)	8.50	4.00	250.00
LSD	2.35					
DCAL	2.33					
SSD	1.85					

Dataset: desert_eagle_red_rocks_35-10.db: field/well/cdl/pass1
 Total length: 11.50 ft
 Total weight: 300.00 lb
 O.D.: 4.00 in

Log Variables

DatabaseC:\ProgramData\Warrior\Data\desert eagle_red rocks 35-10.db
 Dataset field/well/dil/pass3.1/_vars_

Top - Bottom

AIR_HOLE?	BOREID in	BOTTEMP degF	CASEOD in	CASETHCK in	FLUIDDEN g/cc	MATRXDEN g/cc	MudWgt lb/gal
Yes	8.75	100	9.625	0	1	2.65	0
NPORSEL	PERFS	SNDRER mmho/m	SNDRERM mmho/m	SPSHIFT mV	SRFTEMP degF	TDEPTH ft	
Sandstone	No	0	0	0	50	1282	



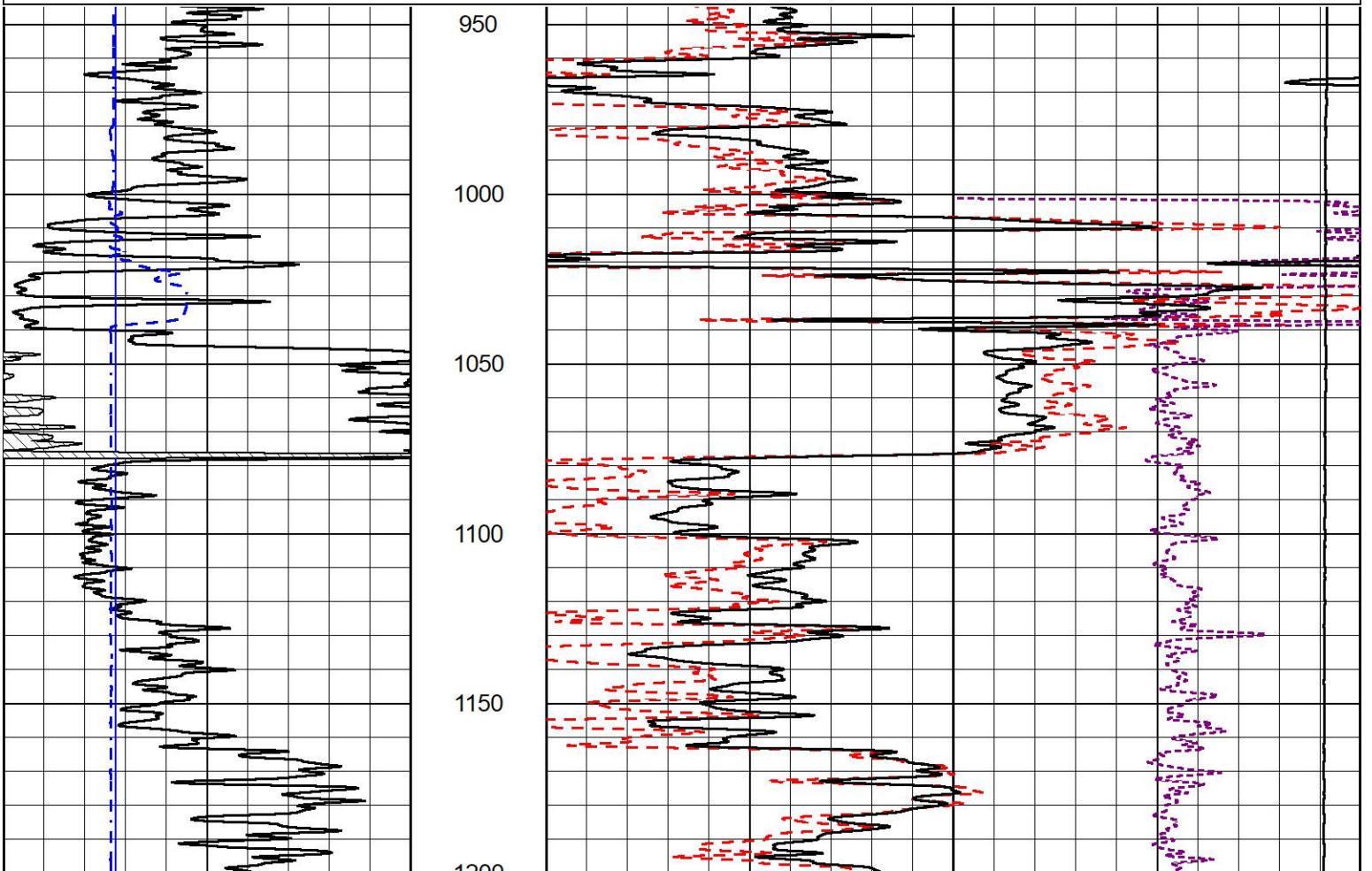
MIDWEST WIRELINE

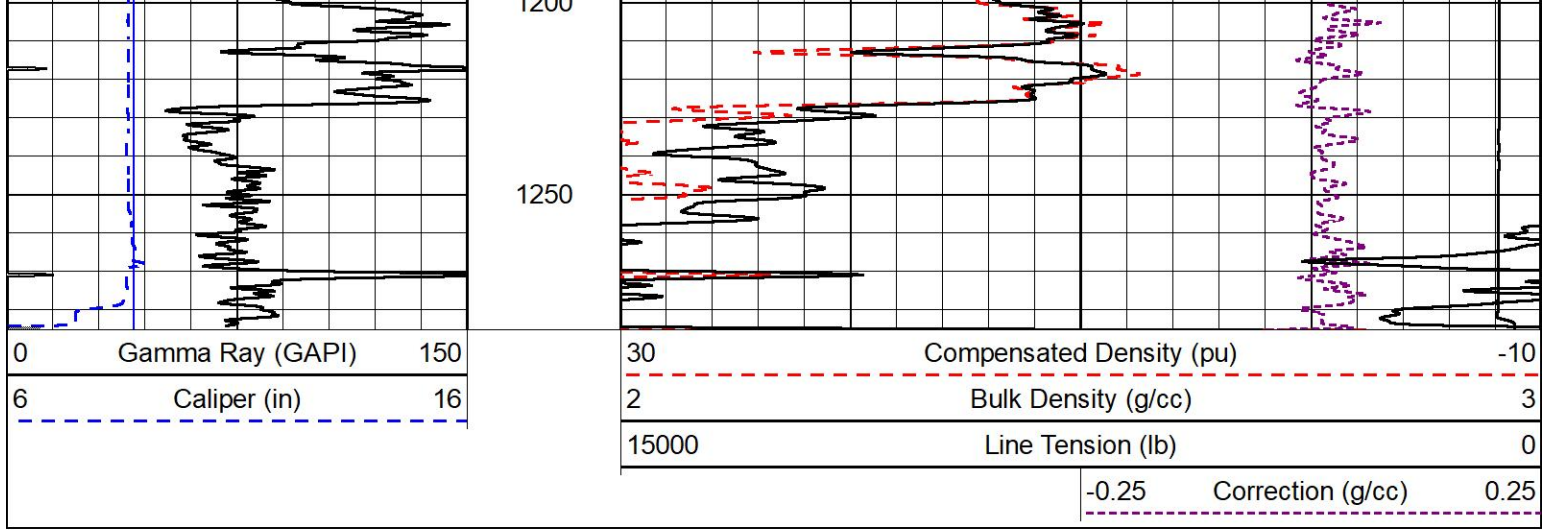
2" SCALE BULK DENSITY

MAIN PASS

Database File desert eagle_red rocks 35-10.db
 Dataset Pathname dil/pass3.2
 Presentation Format _cdl
 Dataset Creation Wed Mar 25 11:12:53 2026
 Charted by Depth in Feet scaled 1:600

0	Gamma Ray (GAPI)	150	30	Compensated Density (pu)	-10	
6	Caliper (in)	16	2	Bulk Density (g/cc)	3	
			15000	Line Tension (lb)	0	
				-0.25	Correction (g/cc)	0.25

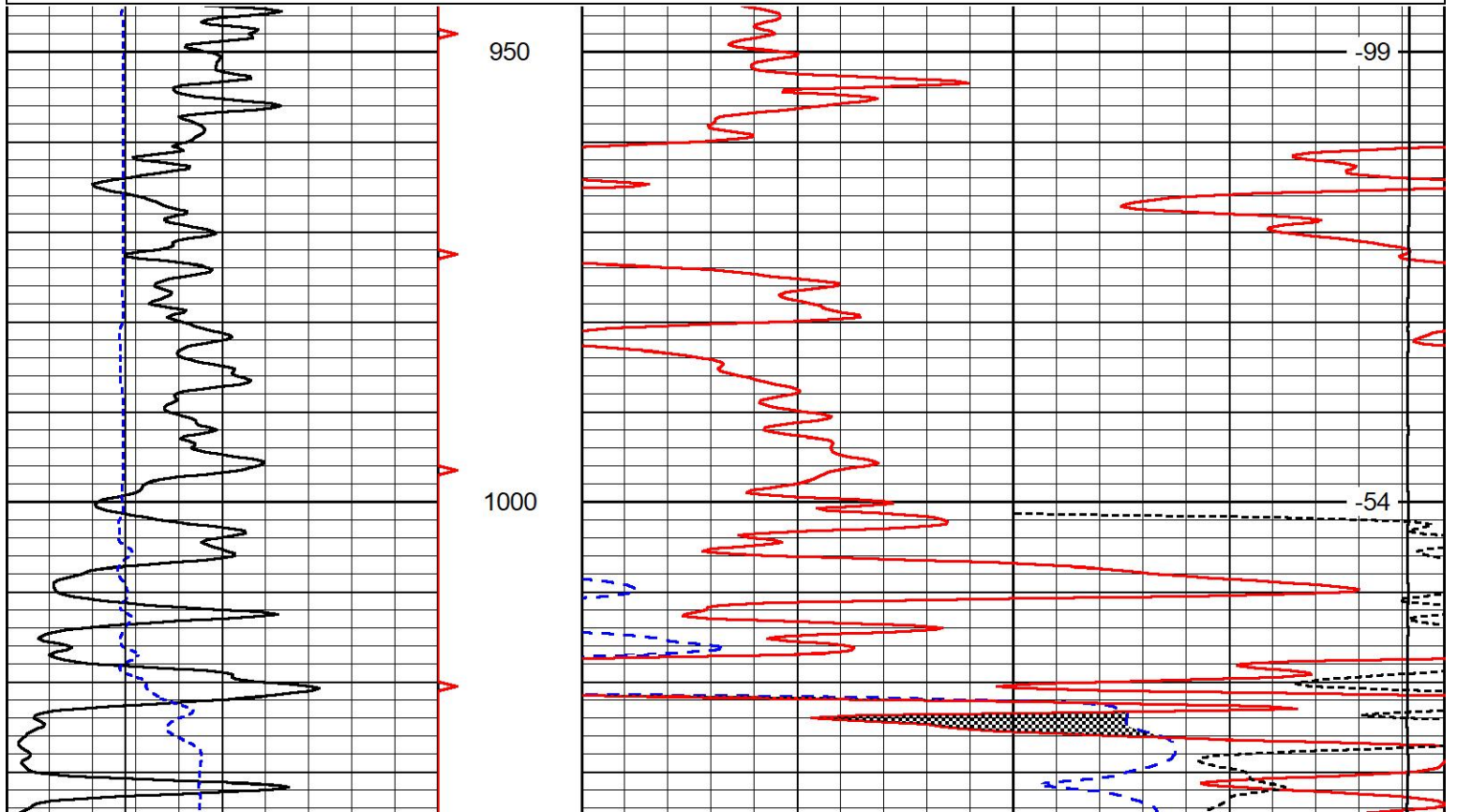
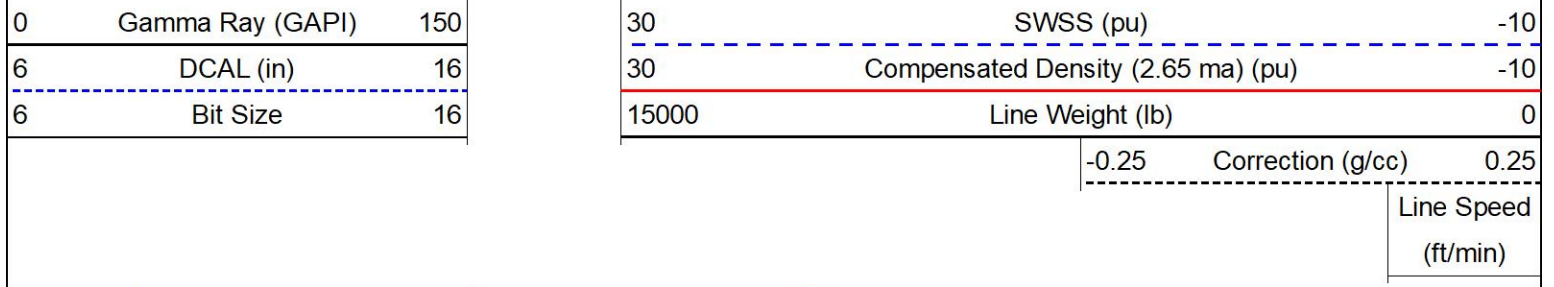


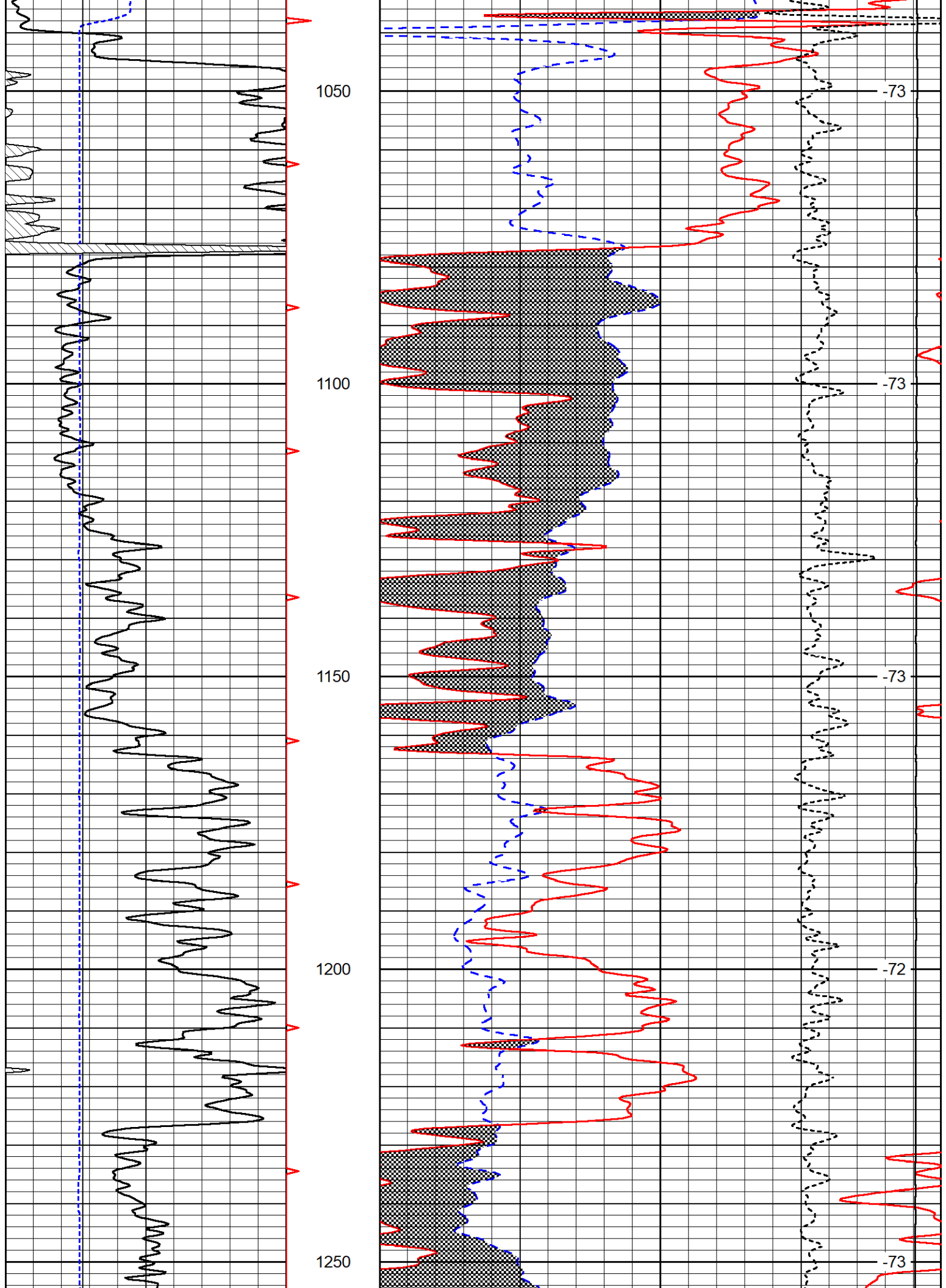


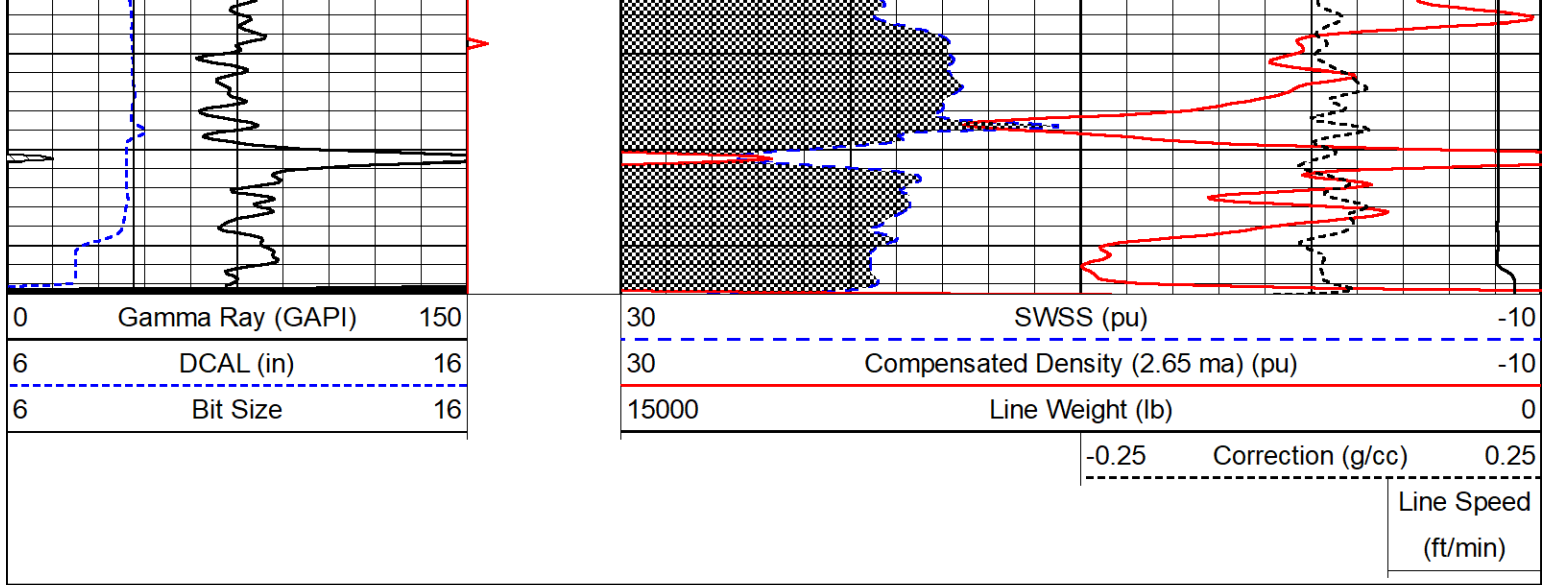
DETAIL SECTION

MAIN PASS

Database File desert eagle_red rocks 35-10.db
 Dataset Pathname dil/pass3.1
 Presentation Format swncdl
 Dataset Creation Wed Mar 25 11:12:45 2026
 Charted by Depth in Feet scaled 1:240







Calibration Report

Database File desert eagle_red rocks 35-10.db
 Dataset Pathname rag/pass1
 Dataset Creation Wed Mar 25 10:51:19 2026

Sidewall Neutron Calibration Report

Serial Number: SP-701
 Tool Model: M&W-SP

SWN Calibration Tue Aug 30 15:14:50 2016

Readings 2566.42 cps Target 1085.00 cps Normalization 0.3400

Caliper Calibration Tue Aug 30 15:14:50 2016

Readings 0.85 Reference 4.00 Gain -18.50 Offset 19.71
 0.31 Reference 14.00

Gamma Ray Calibration Report

Serial Number: 103
 Tool Model: M&W
 Performed: Wed Aug 30 12:29:43 2023

Calibrator Value: 1.0 GAPI

Background Reading: 0.0 cps
 Calibrator Reading: 1.0 cps

Sensitivity: 0.6000 GAPI/cps

Calibration Report

Database File desert eagle_red rocks 35-10.db
 Dataset Pathname cdl/pass1
 Dataset Creation Wed Mar 25 10:17:59 2026

Compensated Density Calibration Report

Serial-Model: 308-05-M&W
 Source #: 21170B
 Master Calibration Performed: Wed May 14 15:44:32 2025

Master Calibration

	Density		Far Detector	Near Detector	
Magnesium	1.755	g/cc	5263.39	6024.11	cps
Aluminum	2.570	g/cc	1137.62	4032.96	cps
Spine Angle = 75.32			Density/Spine Ratio = 0.515		
	Size		Reading		
Small Ring	6.00	in	1.03		
Large Ring	14.00	in	1.15		

Gamma Ray Calibration Report

Serial Number: 105
 Tool Model: M&W
 Performed: Tue Aug 26 12:59:12 2025

Calibrator Value: 500.0 GAPI

Background Reading: 24.0 cps
 Calibrator Reading: 637.0 cps

Sensitivity: 0.6000 GAPI/cps



Company Desert Eagle Operating
 Well Red Rocks #35-10
 Field
 County Las Animas
 State Colorado