

Form 27 Data Package

Dutch Lake 24-22H
Remediation #: 43215



Prepared for:
Highpoint Operating Corporation - 10071

March 2026

NWNW Sec 22 T6N R62W

Facility ID: 430123
API #: 123-36055

Corrective Action Plan

1.0 INTRODUCTION

This Corrective Action Plan (CAP) has been prepared by Stantec Consulting Services Inc. (Stantec) to document the decommissioning of the Dutch Lake 24-22H (Site). The activities described in this CAP were completed in accordance with the Colorado Energy & Carbon Management Commission (ECMC) Site Investigation and Remediation Workplan Form 27 for Remediation #43215.

2.0 BACKGROUND ANALYSIS

Stantec conducted a Background Analysis at the Site to establish background conditions of the soil. This was done to provide evidence that any levels of soil suitability for reclamation standards and/or metals that are outside the acceptable limits in ECMC Table 915-1 are not related to the historic operations at the Site and will not adversely affect agronomic properties of the soil during final reclamation.

A total of 6 background soil samples were collected in the vicinity of the Site on January 5, 2026. The background soil samples were collected from depths ranging from 3 feet below ground surface (' bgs) to 5' bgs. The soil type found in that depth range is clayey sand.

Laboratory analytical results for the background soil samples were received on January 12, 2026 and indicated levels of pH, arsenic, barium, and selenium exist in the native soil above their applicable ECMC Table 915-1 standards.

A total of 17 confirmation soil samples (discussed in **Section 3.0**) were collected throughout the Site between December 17 and 23, 2025. The confirmation soil samples were collected from depths ranging from 2' bgs to 6' bgs. The soil type found in that depth range was poorly graded sand and clayey sand.

See the attached **Decommissioning Form** for a list of soil samples and their associated soil types and depths. See the attached **Table 4** and **Table 5** for a summary of the analytical results of the background soil samples. See the attached **Figure 5** for the locations of the background soil samples. A **Photographic Log** of background soil samples is also attached.

3.0 INITIAL SAMPLING EVENT

SM Energy decommissioned one wellhead, one flowline, four aboveground storage tanks (ASTs), one set of dump lines, one emissions control device (ECD), and one sales line at the Site. Following the removal/abandonment of Site infrastructure, Stantec collected the initial round of confirmation soil samples between December 17 and 23, 2025. Soil samples were sent to Pace Analytical for analysis of the constituents in ECMC Table 915-1. Evidence of a Spill was observed at the wellhead during this sampling event. As such, a Spill was reported to the ECMC on December 18, 2025.

Laboratory results were received on January 6 and 28, 2026. Laboratory results indicate concentrations of organic constituents above applicable ECMC Table 915-1 standards at the wellhead and the sales line. As such, excavation activities will be initiated.

Laboratory results also indicate that levels of inorganic constituents outside applicable ECMC Table 915-1 standards exist at the wellhead, ASTs, dump lines, and sales line after comparing them to background conditions. As such, verification sampling will be initiated for areas not planning to be excavated.

The attached **Decommissioning Form** lists the infrastructure removed. The attached **Figures 2 through 4** depict the locations of the soil samples from the initial sampling event. **Tables 2 through 5** summarize the analytical results of the initial confirmation samples. A **Photographic Log** of the soil samples and field screening locations is also attached.

4.0 CONCLUSIONS AND RECOMMENDATIONS

The soil type throughout the Site is comprised primarily of poorly graded sand and clayey sand from depths of 2' bgs to 6' bgs. The native background soil type in the vicinity of the Site is comprised primarily of clayey sand from depths of 3' bgs to 5' bgs.

One wellhead, one flowline, four ASTs, one set of dump lines, one ECD, and one sales line were decommissioned at the Site. A Spill was reported to the ECMC on December 18, 2025 for impacts discovered during the initial sampling event.

Laboratory results indicate concentrations of organic constituents above applicable ECMC Table 915-1 standards at the wellhead and the sales line. As such, excavation activities will be initiated.

Laboratory results also indicate that levels of inorganic constituents outside applicable ECMC Table 915-1 standards exist at the wellhead, ASTs, dump lines, and sales line after comparing them to background conditions. As such, verification sampling will be initiated for areas not planning to be excavated.

Decommissioning Form

Site Name: <u>Dutch Lake 24-22H</u> Dylan Skilton (12/17/25), Sam O'Boyle (12/23/25, 1/5/26)	Date: <u>December 17, 2025</u>	ECMC Rem #: <u>43215</u>	Weather: <u>Sunny (12/17/25), Cloudy (12/23/25), Sunny (1/5/26)</u>
Sampler Name: <u>1/5/26</u>	Surface Gradient: <u>N</u>	Livestock: <u>None</u>	Surrounding Land Use: <u>Undeveloped</u>

Sample ID	Date / Time	Depth	Soil PID (ppm)	Soil Stain / GW Sheen	Odor	Soil Description (USCS)	Photo (Y/N)	Associated Equipment	Lab (Y/N)
SP-CS02@5	12-17-25 / 08:45	5	0	No	No	SP	Y	SP-CS	Yes
DL1B01@3	12-17-25 / 09:00	3	0	No	No	SP	Y	DL	Yes
SALEFLB01@3	12-17-25 / 09:05	3	0	No	No	SP	Y	FL	Yes
FLB02@4	12-17-25 / 08:37	4	0	No	No	SP	Y	FL	Yes
SALEFLB02@3	12-17-25 / 09:08	3	1	No	No	SP	Y	FL	No
ECD1B01@3	12-17-25 / 08:50	3	0	No	No	SP	Y	ECD	No
AST-DL2B01@3	12-17-25 / 09:20	3	0	No	No	SP	Y	AST-DL	Yes
AST-DL1B01@3	12-17-25 / 09:12	3	1	No	No	SP	Y	AST-DL	Yes
SP-CS03@3	12-17-25 / 09:21	3	0	No	No	SP	Y	SP-CS	Yes
24-22WHB01@6	12-17-25 / 08:00	6	2,250	Yes	Yes	SP	Y	WH	Yes
24-22WHN01@5	12-17-25 / 08:05	5	75	No	No	SP	Y	WH	Yes
24-22WHS01@5	12-17-25 / 08:10	5	9	No	No	SP	Y	WH	No
24-22WHE01@5	12-17-25 / 08:14	5	94	No	No	SP	Y	WH	Yes
24-22WHW01@5	12-17-25 / 08:20	5	9	No	No	SP	Y	WH	No
FLB01@4	12-17-25 / 08:22	4	3	No	No	SP	Y	FL	Yes
SP-CS01@6	12-17-25 / 08:32	6	123	No	No	SP	Y	SP-CS	Yes
AST1B01@2	12-23-25 / 13:20	2	2	No	No	SC	Y	AST	Yes
AST2B01@2	12-23-25 / 13:30	2	1	No	No	SC	Y	AST	Yes

Sample ID	Date / Time	Depth	Soil PID (ppm)	Soil Stain / GW Sheen	Odor	Soil Description (USCS)	Photo (Y/N)	Associated Equipment	Lab (Y/N)
AST3B01@2	12-23-25 / 13:40	2	2	No	No	SC	Y	AST	Yes
AST4B01@2	12-23-25 / 14:00	2	2	No	No	SC	Y	AST	Yes
BG01@3	1-5-26 / 13:30	3	1	No	No	SC	Y	BG	Yes
BG01@4	1-5-26 / 13:40	4	1	No	No	SC	Y	BG	Yes
BG01@5	1-5-26 / 13:50	5	1	No	No	SC	Y	BG	Yes
BG02@3	1-5-26 / 14:05	3	1	No	No	SC	Y	BG	Yes
BG02@4	1-5-26 / 14:15	4	1	No	No	SC	Y	BG	Yes
BG02@5	1-5-26 / 14:25	5	1	No	No	SC	Y	BG	Yes

Infrastructure Type	Count
Wellhead	1
Flowline	1
Separator	0
Dump Line	1
Oil Tank	4
PWV	0
ECD	1
Other (Sales Line)	1

Excavated Soil Date	Quantity (CY)
TBD	TBD
Total Removed:	TBD
Disposal Facility:	TBD

GW Recovery Date	Quantity (BBL)
Not encountered	0
Total Removed:	0
Disposal Facility:	NA
Date Encountered:	NA

FL Abandoned in Place (feet)	FL Removed (feet)
0	175

Notes:

AST Above-ground storage tank
 CY Cubic Yards
 BBL Barrels
 BG Background
 PID Photoionization detector
 ECD Emissions control device
 FL Flow line

m Meters
 NA Not Applicable
 ppm Parts per million
 PWV Produced water vault
 TB Tank battery
 Unified Soil Classification System
 USCS
 WH Well head

Tables

TABLE 1
Soil Sample Locations
Dutch Lake 24-22H

Soil Sample Location	Depth (ft)	Date	PID Reading (ppm)	Latitude	Longitude	Lab (Y/N)	PDOP	Excavated (Y/N)
FLOWLINE								
FLB01@4	4	12/17/25	3	40.47914261	-104.3144913	Y	1.2	N
FLB02@4	4	12/17/25	0	40.47906621	-104.3150241	Y	1.8	N
SALEFLB01@3	3	12/17/25	0	40.47909773	-104.315055	N	1.6	N
SALEFLB02@3	3	12/17/25	1	40.47918802	-104.3150725	N	0.9	N
SLB01@3	3	12/17/25	0	40.4791043	-104.315065	Y	1.6	N
SLB02@3	3	12/17/25	1	40.47919458	-104.3150825	N	0.9	N
WELLHEAD								
24-22WHB01@6	6	12/17/25	2250	40.47914313	-104.314468	Y	1.4	N
24-22WHE01@5	5	12/17/25	94	40.47913689	-104.3144565	Y	1.4	N
24-22WHN01@5	5	12/17/25	75	40.47915825	-104.314482	Y	2.7	N
24-22WHS01@5	5	12/17/25	9	40.47913171	-104.3144679	N	1.3	N
24-22WHW01@5	5	12/17/25	9	40.4791386	-104.3144824	N	1.2	N
SP-CS01@6	6	12/17/25	123	40.47919355	-104.3144339	Y	1	Y
FACILITY								
AST-DL1B01@3	3	12/17/25	1	40.47888355	-104.3149274	Y	1	N
AST-DL2B01@3	3	12/17/25	0	40.4788861	-104.3150077	Y	1	N
AST1B01@2	2	12/23/25	2	40.47878819	-104.3149284	Y	1	N
AST2B01@2	2	12/23/25	1	40.47878615	-104.3149949	Y	0.9	N
AST3B01@2	2	12/23/25	2	40.47883667	-104.3150004	Y	0.9	N
AST4B01@2	2	12/23/25	2	40.4788418	-104.3149322	Y	0.9	N
DL1B01@3	3	12/17/25	0	40.47905702	-104.3149548	Y	1.5	N
ECD1B01@3	3	12/17/25	NA	40.47923802	-104.3149508	N	1	N
SP-CS02@5	5	12/17/25	0	40.47911819	-104.3148905	Y	1.4	Y
SP-CS03@3	3	12/17/25	0	40.47888867	-104.3148776	Y	0.9	N

TABLE 1
Soil Sample Locations
Dutch Lake 24-22H

Soil Sample Location	Depth (ft)	Date	PID Reading (ppm)	Latitude	Longitude	Lab (Y/N)	PDOP	Excavated (Y/N)
SP-CS04@4	4	12/17/25	0	40.47888867	-104.3148776	Y	NA	N
BACKGROUND								
BG01@3	3	01/05/26	1	40.47860392	-104.3142478	Y	0.7	N
BG01@4	4	01/05/26	1	40.47860359	-104.314247	Y	0.7	N
BG01@5	5	01/05/26	1	40.4786067	-104.3142498	Y	0.8	N
BG02@3	3	01/05/26	1	40.47861009	-104.3142933	Y	0.8	N
BG02@4	4	01/05/26	1	40.47861048	-104.3142915	Y	0.8	N
BG02@5	5	01/05/26	1	40.47861076	-104.3142911	Y	0.8	N

Notes:

PID = Photoionization Detector

ppm = parts per million

GPS = Global Positioning System

PDOP = Position Dilution of Precision

NA PDOP = Location was adjusted by geographic information system (GIS) professionals.

NA = Not Analyzed

**TABLE 2
VOCs SUMMARY TABLE
Dutch Lake 24-22H**

Soil Sample Location	Date Sampled	Depth (ft)	Benzene mg/kg	Toluene mg/kg	Ethylbenzene mg/kg	Total Xylenes mg/kg	Naphthalene mg/kg	TVPH-GRO mg/kg	TEPH-DRO mg/kg	TEPH-ORO mg/kg	1,2,4-TMB mg/kg	1,3,5-TMB mg/kg
SITE												
GSSL¹			0.0026	0.69	0.78	9.9	0.0038	500			0.0081	0.0087
RSSL²			1.2	490	5.8	58	2	500			30	27
24-22WHB01@6	12/17/25	6	0.302	1.33	2.18	8.33	2.79	572	3350	2070	5.21	1.25
24-22WHE01@5	12/17/25	5	0.00154	<0.0128	0.0474	0.725	0.112	137	6930	7840	0.971	0.341
24-22WHN01@5	12/17/25	5	<0.00126	<0.0126	0.0144	<0.126	0.061	12.8	130	140	0.0964	0.0222
AST-DL1B01@3	12/17/25	3	<0.00127	<0.0127	<0.0127	<0.127	<0.00341	<3.18	<4.54	<4.54	<0.00635	<0.00635
AST-DL2B01@3	12/17/25	3	<0.0013	<0.013	<0.013	<0.13	<0.00345	<3.25	<4.6	<4.6	<0.00649	<0.00649
DL1B01@3	12/17/25	3	<0.00121	<0.0121	<0.0121	<0.121	<0.00331	<3.01	<4.41	<4.41	<0.00603	<0.00603
FLB01@4	12/17/25	4	<0.00154	<0.0154	<0.0154	<0.154	<0.00381 ³	<3.86	1150	1690	<0.00771	<0.00771
FLB02@4	12/17/25	4	<0.00127	<0.0127	<0.0127	<0.127	<0.0034	<3.17	<4.54	<4.54	0.0214	<0.00634
SLB01@3	12/17/25	3	<0.00128	<0.0128	<0.0128	<0.128	0.00671	<3.19	<4.55	10.9	<0.00638	<0.00638
SP-CS01@6	12/17/25	6	<0.00126	<0.0126	0.142	0.789	0.674	106	1050	856	1.78	0.583
SP-CS02@5	12/17/25	5	<0.00118	<0.0118	<0.0118	<0.118	<0.00326	<2.94	8.13	24.4	<0.00588	<0.00588
SP-CS03@3	12/17/25	3	<0.00123	<0.0123	<0.0123	<0.123	<0.00335	<3.08	<4.47	<4.47	<0.00617	<0.00617
SP-CS04@4	12/17/25	4	<0.00128	<0.0128	<0.0128	<0.128	<0.00342	<3.2	<4.56	<4.56	<0.0064	<0.0064
AST1B01@2	12/23/25	2	<0.00119	<0.0119	<0.0119	<0.119	<0.00328	<2.97	<4.38	<4.38	<0.00595	<0.00595
AST2B01@2	12/23/25	2	<0.00128	<0.0128	<0.0128	<0.128	<0.00342	<3.2	<4.56	<4.56	<0.0064	<0.0064
AST3B01@2	12/23/25	2	<0.00116	<0.0116	<0.0116	<0.116	<0.00324	<2.9	<4.32	<4.32	<0.00579	<0.00579
AST4B01@2	12/23/25	2	<0.00124	<0.0124	<0.0124	<0.124	<0.00336	<3.1	<4.48	<4.48	<0.0062	<0.0062

VOCs = Volatile Organic Compounds

(1) Standards for soil are taken from ECMC Table 915-1 Organic Compounds in Soils - Protection of Groundwater Soil Screening Level Concentrations (Effective January 15 2021)

(2) Standards for soil are taken from ECMC Table 915-1: Organic Compounds in Soils - Residential Soil Screening Level Concentrations (Effective January 15, 2021)

ECMC = Energy and Carbon Management Commission

(<) = Sample result is less than the indicated sample-specific laboratory reporting limit

mg/kg = milligrams per kilogram

TVPH-GRO = Total Volatile Petroleum Hydrocarbons - Gasoline Range Organics

TEPH-DRO = Total Extractable Petroleum Hydrocarbons - Diesel Range Organics

TEPH-ORO = Total Extractable Petroleum Hydrocarbons - Oil Range Organics

This report was generated using the GiSdT SM Energy Data Management and Reporting webtool, Version 2.3.1, created by Neptune and Company, Inc.

1,2,4-TMB = 1,2,4 - Trimethylbenzene

1,3,5-TMB = 1,3,5 - Trimethylbenzene

BOLD = Analytical Result is in exceedance of GSSL

NA = Not Analyzed

(3) Reporting limit is elevated above GSSL due to dry weight conversion (moisture content: 21.3%).

**TABLE 3
PAHs SUMMARY TABLE
Dutch Lake 24-22H**

Soil Sample Location	Date Sampled	Depth (ft)	Acenaphthene mg/kg	Anthracene mg/kg	Benzo(a)A mg/kg	Benzo(b)F mg/kg	Benzo(k)F mg/kg	Benzo(a)P mg/kg	Chrysene mg/kg	D(a,h)A mg/kg	Fluoranthene mg/kg	Fluorene mg/kg	1,2,3-CD mg/kg	1-M mg/kg	2-M mg/kg	Pyrene mg/kg
SITE																
GSSL¹			0.55	5.8	0.011	0.3	2.9	0.24	9	0.096	8.9	0.54	0.98	0.006	0.019	1.3
RSSL²			360	1800	1.1	1.1	11	0.11	110	0.11	240	240	1.1	18	24	180
24-22WHB01@6	12/17/25	6	<0.0392	<0.0392	<0.00713	<0.0392	<0.0392	<0.0392	0.118	<0.0392	0.0923	0.643	<0.0392	9.26	9.3	0.117
24-22WHE01@5	12/17/25	5	<0.0376	<0.0376	<0.00684	0.0562	<0.0376	0.0727	0.581	<0.0376	<0.0376	0.0534	<0.0376	0.261	0.171	0.0765
24-22WHN01@5	12/17/25	5	<0.0373	<0.0373	<0.00679	<0.0373	<0.0373	<0.0373	<0.0373	<0.0373	<0.0373	<0.0373	<0.0373	0.211	0.187	<0.0373
AST-DL1B01@3	12/17/25	3	<0.0375	<0.0375	<0.00681	<0.0375	<0.0375	<0.0375	<0.0375	<0.0375	<0.0375	<0.0375	<0.0375	<0.00341	<0.0136	<0.0375
AST-DL2B01@3	12/17/25	3	<0.0379	<0.0379	<0.0069	<0.0379	<0.0379	<0.0379	<0.0379	<0.0379	<0.0379	<0.0379	<0.0379	<0.00345	<0.0138	<0.0379
DL1B01@3	12/17/25	3	<0.0364	<0.0364	<0.00662	<0.0364	<0.0364	<0.0364	<0.0364	<0.0364	<0.0364	<0.0364	<0.0364	<0.00331	<0.0132	<0.0364
FLB01@4	12/17/25	4	<0.0419	<0.0419	<0.00762	<0.0419	<0.0419	<0.0419	0.216	<0.0419	<0.0419	<0.0419	<0.0419	0.00404	<0.0152	<0.0419
FLB02@4	12/17/25	4	<0.0374	<0.0374	<0.0068	<0.0374	<0.0374	<0.0374	<0.0374	<0.0374	<0.0374	<0.0374	<0.0374	<0.0034	<0.0136	<0.0374
SLB01@3	12/17/25	3	<0.0376	<0.0376	<0.00683	<0.0376	<0.0376	<0.0376	<0.0376	<0.0376	<0.0376	<0.0376	<0.0376	<0.00341	<0.0137	<0.0376
SP-CS01@6	12/17/25	6	<0.0373	<0.0373	<0.00678	<0.0373	<0.0373	<0.0373	<0.0373	<0.0373	<0.0373	0.203	<0.0373	1.86	1.56	<0.0373
SP-CS02@5	12/17/25	5	<0.0359	<0.0359	<0.00652	<0.0359	<0.0359	<0.0359	<0.0359	<0.0359	<0.0359	<0.0359	<0.0359	<0.00326	<0.013	<0.0359
SP-CS03@3	12/17/25	3	<0.0369	<0.0369	<0.0067	<0.0369	<0.0369	<0.0369	<0.0369	<0.0369	<0.0369	<0.0369	<0.0369	<0.00335	<0.0134	<0.0369
SP-CS04@4	12/17/25	4	<0.0376	<0.0376	<0.00684	<0.0376	<0.0376	<0.0376	<0.0376	<0.0376	<0.0376	<0.0376	<0.0376	<0.00342	<0.0137	<0.0376
AST1B01@2	12/23/25	2	<0.0361	<0.0361	<0.00657	<0.0361	<0.0361	<0.0361	<0.0361	<0.0361	<0.0361	<0.0361	<0.0361	<0.00328	<0.0131	<0.0361
AST2B01@2	12/23/25	2	<0.0376	<0.0376	<0.00684	<0.0376	<0.0376	<0.0376	<0.0376	<0.0376	<0.0376	<0.0376	<0.0376	<0.00342	<0.0137	<0.0376
AST3B01@2	12/23/25	2	<0.0356	<0.0356	<0.00648	<0.0356	<0.0356	<0.0356	<0.0356	<0.0356	<0.0356	<0.0356	<0.0356	<0.00324	<0.013	<0.0356
AST4B01@2	12/23/25	2	<0.0369	<0.0369	<0.00672	<0.0369	<0.0369	<0.0369	<0.0369	<0.0369	<0.0369	<0.0369	<0.0369	<0.00336	<0.0134	<0.0369

PAHs = Polycyclic Aromatic Hydrocarbons

(1) Standards for soil are taken from ECMC Table 915-1 Organic Compounds in Soils - Protection of Groundwater Soil Screening Level Concentrations (Effective January 15 2021)

(2) Standards for soil are taken from ECMC Table 915-1: Organic Compounds in Soils - Residential Soil Screening Level Concentrations (Effective January 15, 2021)

ECMC = Energy and Carbon Management Commission

(<) = Sample result is less than the indicated sample-specific laboratory reporting limit

mg/kg = milligrams per kilogram

Benzo(a)A = Benzo(a)Anthracene

This report was generated using the GiSDT SM Energy Data Management and Reporting webtool, Version 2.3.1, created by Neptune and Company, Inc.

Benzo(b)F = Benzo(b)Fluoranthene
Benzo(k)F = Benzo(k)Fluoranthene
Benzo(a)P = Benzo(a)Pyrene
D (a,h) A = Dibenz(a,h)Anthracene
1,2,3-CD = Indeno(1,2,3-cd)Pyrene
1-M = 1-Methylnaphthalene
2-M = 2-Methylnaphthalene
BOLD = Analytical Result is in exceedance of GSSL
NA = Not Analyzed

TABLE 4
SOIL ANALYTICAL RESULTS SUMMARY - METALS
Dutch Lake 24-22H

Soil Sample Location	Date Sampled	Depth (ft)	Arsenic mg/kg	Barium mg/kg	Cadmium mg/kg	Chromium (VI) mg/kg	Copper mg/kg	Lead mg/kg	Nickel mg/kg	Selenium mg/kg	Silver mg/kg	Zinc mg/kg
GSSL¹			0.29	82	0.38	0.00067	46	14	26	0.26	0.8	370
RSSL²			0.68	15000	71	0.3	3100	400	1500	390	390	23000
Background Limits³			6.12	2140	0.342	ND	ND	ND	ND	1.36	ND	ND
BACKGROUND												
BG01@3	01/05/26	3	4.46	358	0.159	<0.212	<10.6	<10.6	<10.6	0.995	<0.531	<53.1
BG01@4	01/05/26	4	4.90	284	0.191	<0.212	<10.6	<10.6	<10.6	0.962	<0.53	<53
BG01@5	01/05/26	5	3.38	1710	0.274	<0.207	<10.3	<10.3	<10.3	1.09	<0.517	<51.7
BG02@3	01/05/26	3	4.74	250	0.169	<0.213	<11.3	<11.3	<11.3	0.999	<0.563	<56.3
BG02@4	01/05/26	4	4.87	260	0.140	<0.211	<10.6	<10.6	<10.6	0.846	<0.528	<52.8
BG02@5	01/05/26	5	4.54	127	0.140	<0.214	<10.9	<10.9	<10.9	0.880	<0.545	<54.5
SITE												
GSSL¹			0.29	82	0.38	0.00067	46	14	26	0.26	0.8	370
RSSL²			0.68	15000	71	0.3	3100	400	1500	390	390	23000
Background Limits³			6.12	2140	0.342	ND	ND	ND	ND	1.36	ND	ND
24-22WHB01@6	12/17/25	6	5.43*	1160*	0.318	1.32	25.7	<11.9	19.6	0.503*	<0.594	70.6
24-22WHE01@5	12/17/25	5	4.51*	1240*	0.158	<0.228	17.5	<11.6	<11.6	0.47*	<0.582	308
24-22WHN01@5	12/17/25	5	8.37	922*	0.324	<0.226	19.2	16.4	18.3	0.557*	<0.566	110
AST-DL1B01@3	12/17/25	3	8.55	61.6	0.265	<0.227	18.6	17.6	20.2	0.582*	<0.59	83.1
AST-DL2B01@3	12/17/25	3	3.57*	71.3	<0.12	<0.23	<12	<12	<12	0.336*	<0.598	<59.8
DL1B01@3	12/17/25	3	3.62*	90.7*	<0.11	<0.221	<11	<11	<11	0.26	<0.551	<55.1
FLB01@4	12/17/25	4	8.89	217*	0.276	<0.254	16.8	15.6	16.1	0.708*	<0.635	69.5
FLB02@4	12/17/25	4	3.1*	79.2	<0.113	<0.227	<11.3	<11.3	<11.3	0.281*	<0.567	<56.7
SLB01@3	12/17/25	3	8.88	87.8*	0.129	<0.228	15	15.6	16	0.551*	<0.569	69.9
SP-CS01@6	12/17/25	6	6.45	430*	0.166	<0.226	13.8	11.5	12.4	0.516*	<0.565	77.6
SP-CS02@5	12/17/25	5	3.26*	109*	<0.109	<0.217	<10.9	<10.9	<10.9	0.238	<0.544	<54.4

TABLE 4
SOIL ANALYTICAL RESULTS SUMMARY - METALS
Dutch Lake 24-22H

Soil Sample Location	Date Sampled	Depth (ft)	Arsenic mg/kg	Barium mg/kg	Cadmium mg/kg	Chromium (VI) mg/kg	Copper mg/kg	Lead mg/kg	Nickel mg/kg	Selenium mg/kg	Silver mg/kg	Zinc mg/kg
GSSL¹			0.29	82	0.38	0.00067	46	14	26	0.26	0.8	370
RSSL²			0.68	15000	71	0.3	3100	400	1500	390	390	23000
Background Limits³			6.12	2140	0.342	ND	ND	ND	ND	1.36	ND	ND
SP-CS03@3	12/17/25	3	6.08*	118*	0.164	<0.223	<11.2	<11.2	<11.2	0.392*	<0.558	<55.8
SP-CS04@4	12/17/25	4	5.01*	135*	0.15	<0.228	<11.4	<11.4	<11.4	0.445*	<0.57	<57
AST1B01@2	12/23/25	2	3.83*	220*	0.152	<0.219	<10.9	<10.9	<10.9	0.289*	<0.547	<54.7
AST2B01@2	12/23/25	2	6.49	150*	0.351	<0.228	<11.4	<11.4	14.3	0.795*	<0.57	<57
AST3B01@2	12/23/25	2	2.82*	466*	<0.108	<0.216	<10.8	<10.8	<10.8	0.269*	<0.54	<54
AST4B01@2	12/23/25	2	4.69*	77.6	0.118	<0.224	<11.2	<11.2	<11.2	0.528*	<0.56	<56

1. Standards for soil are taken from ECMC Table 915-1: Metals in Soils - Protection of Groundwater Soil Screening Level Concentrations (Effective January 15, 2021).

2. Standards for soil are taken from ECMC Table 915-1: Metals in Soils - Residential Soil Screening Level Concentrations (Effective January 15, 2021).

3. Background Limits are calculated as the maximum of site-specific background data multiplied by 1.25.

ECMC = Energy and Carbon Management Commission

(<) = Sample result is less than the indicated sample-specific laboratory reporting limit

mg/kg = milligrams per kilogram

Blue highlight: Highest background concentration for the depth interval x 1.25

Bolded values: Concentrations greater than both background limits and GSSL

Asterisk (*) = Concentration greater than GSSL but less than background concentration

Italics = Laboratory method detection limit exceeds the ECMC Table 915-1 Standard

ND = Not Detected

NA = Not Analyzed

TABLE 5
SOIL SUITABILITY RESULTS SUMMARY TABLE
Dutch Lake 24-22H

Soil Sample Location	Date Sampled	Depth (ft)	Boron (mg/L)	pH	SAR	EC (mmhos/cm)
ECMC Soil Suitability for Reclamation (1)			2	6-8.3	<6	<4
Background Limits (2)			ND	8.45	1.16	0.335
BACKGROUND						
BG01@3	01/05/26	3	<0.1	8.37	0.145	0.222
BG01@4	01/05/26	4	<0.1	8.43	0.365	0.227
BG01@5	01/05/26	5	<0.1	8.45	1.16	0.322
BG02@3	01/05/26	3	<0.1	8.37	0.257	0.229
BG02@4	01/05/26	4	<0.1	8.42	0.521	0.289
BG02@5	01/05/26	5	<0.1	8.34	0.706	0.335
SITE						
ECMC Soil Suitability for Reclamation (1)			2	6-8.3	<6	<4
Background Limits (2)			ND	8.45	1.16	0.335
24-22WHB01@6	12/17/25	6	<0.1	9.24	2.61	3.88
24-22WHE01@5	12/17/25	5	<0.1	7.35	1.06	3.06
24-22WHN01@5	12/17/25	5	<0.1	7.93	2.2	2.91
AST-DL1B01@3	12/17/25	3	<0.1	7.68	0.0429	2.28
AST-DL2B01@3	12/17/25	3	<0.1	8.28	0.208	0.374
DL1B01@3	12/17/25	3	<0.1	7.94	0.128	1.95
FLB01@4	12/17/25	4	<0.1	7.56	1.98	3.76
FLB02@4	12/17/25	4	<0.1	8.67	0.681	0.284
SLB01@3	12/17/25	3	<0.1	7.76	0.054	2.63
SP-CS01@6	12/17/25	6	<0.1	7.67	1.21	3.24
SP-CS02@5	12/17/25	5	<0.1	8.02	0.108	0.605
SP-CS03@3	12/17/25	3	<0.1	7.91	0.301	1.86
SP-CS04@4	12/17/25	4	0.136	7.92	1.38	4.08
AST1B01@2	12/23/25	2	<0.1	8.69	2.77	0.59

TABLE 5
SOIL SUITABILITY RESULTS SUMMARY TABLE
Dutch Lake 24-22H

Soil Sample Location	Date Sampled	Depth (ft)	Boron (mg/L)	pH	SAR	EC (mmhos/cm)
ECMC Soil Suitability for Reclamation (1)			2	6-8.3	<6	<4
Background Limits (2)			ND	8.45	1.16	0.335
AST2B01@2	12/23/25	2	<0.1	8.43*	0.107	0.244
AST3B01@2	12/23/25	2	<0.1	8.22	0.468	0.963
AST4B01@2	12/23/25	2	0.117	8.26	5.63	2.16

1. Standards for soil are taken from ECMC Table 915-1: Soil Suitability for Reclamation (Effective January 15 2021).

2. Background limits are calculated as the maximum of site-specific background data.

ECMC = Energy and Carbon Management Commission

(<) = Sample result is less than the indicated sample-specific laboratory reporting limit

mmhos/cm = millimhos per centimeter

mg/L = milligrams per liter

pH = Potential of Hydrogen

SAR = Sodium Adsorbion Ratio

EC = Electrical Conductivity

Green highlight: Highest background concentration for the depth interval

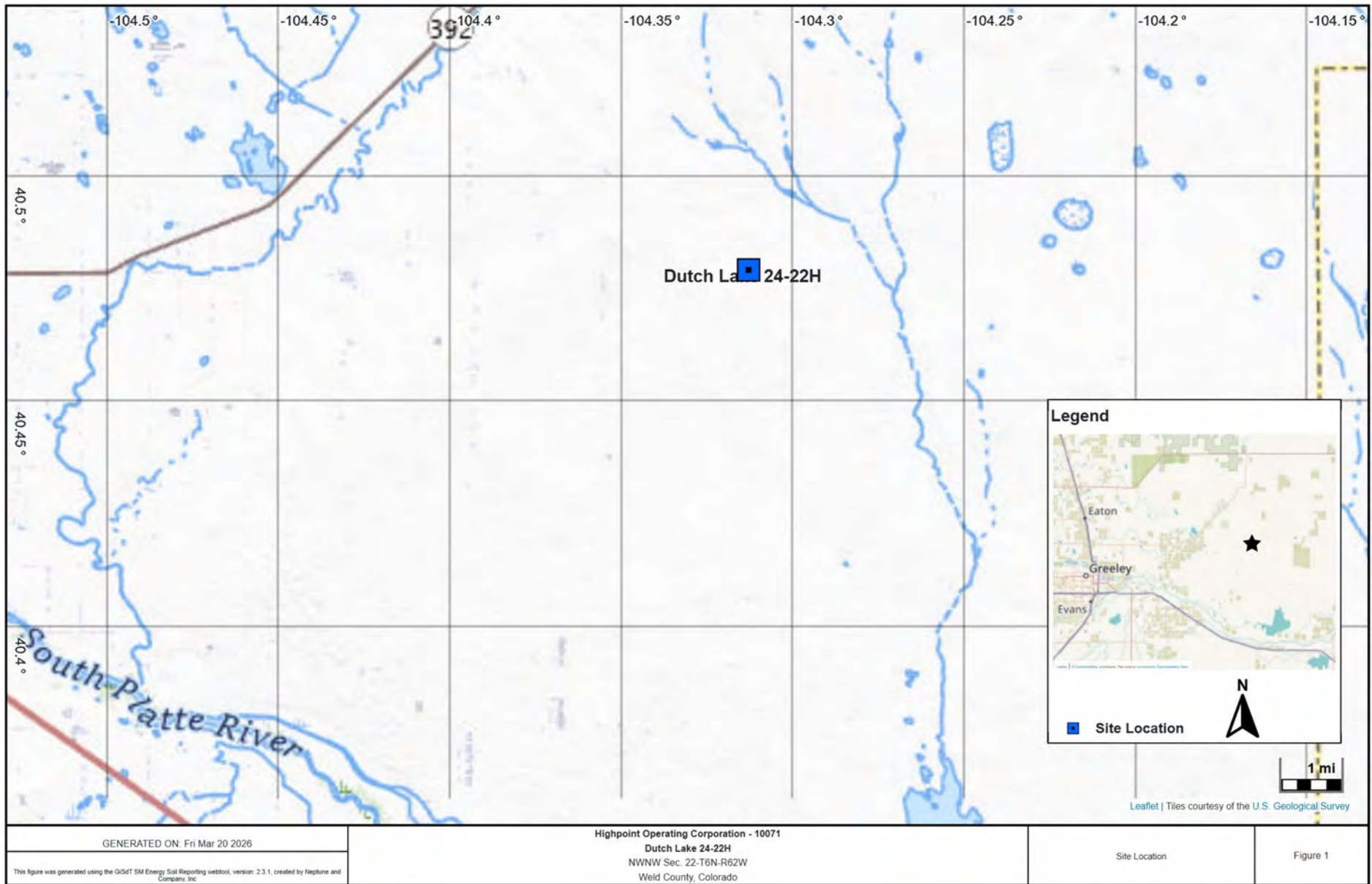
Bolded values: Concentration greater than both background concentration and ECMC Table 915-1 cleanup concentration

Asterisk (*) = Concentration greater than ECMC Table 915-1 cleanup concentration but less than background concentration

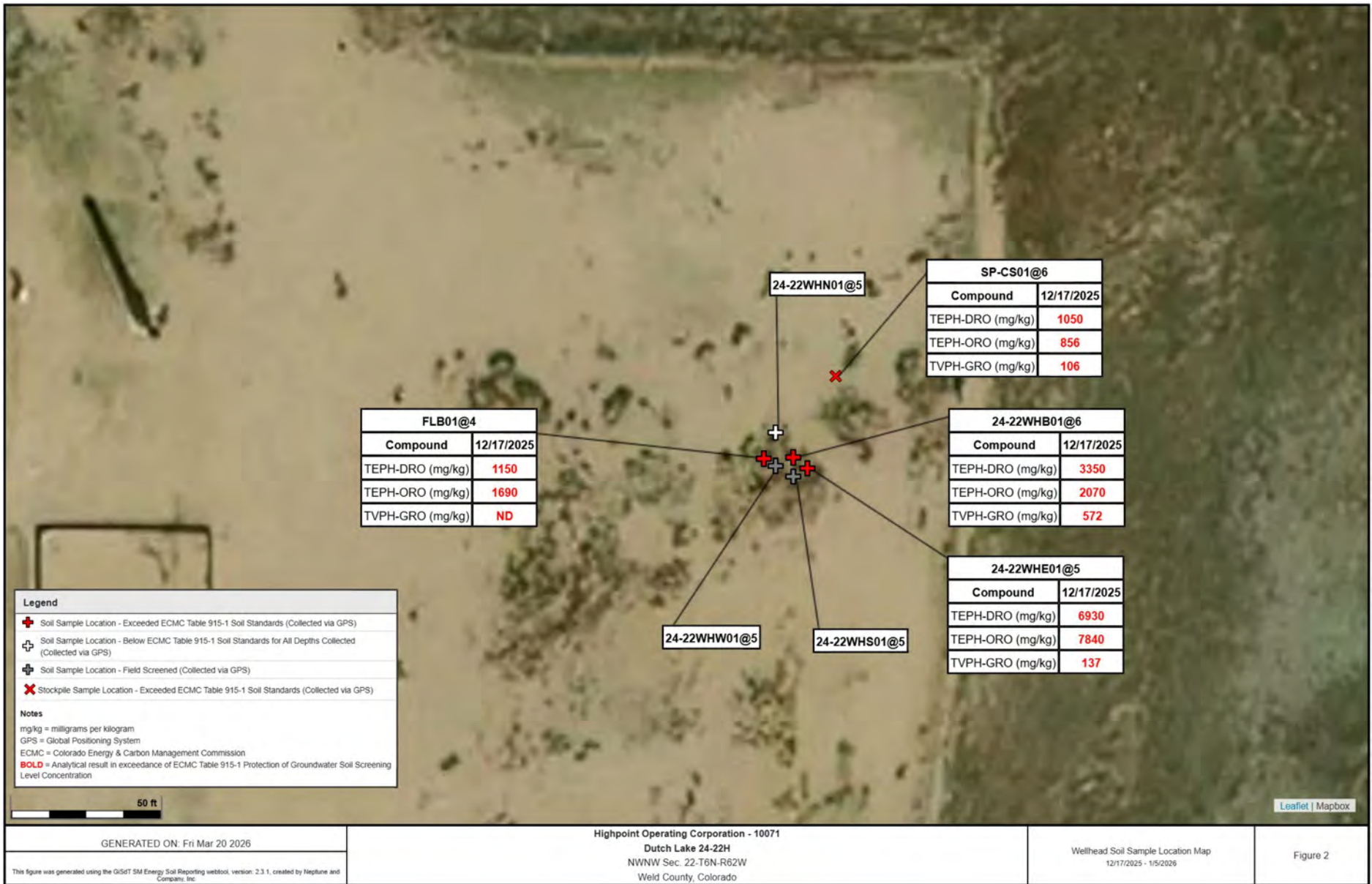
ND = Not Detected

NA = Not Analyzed

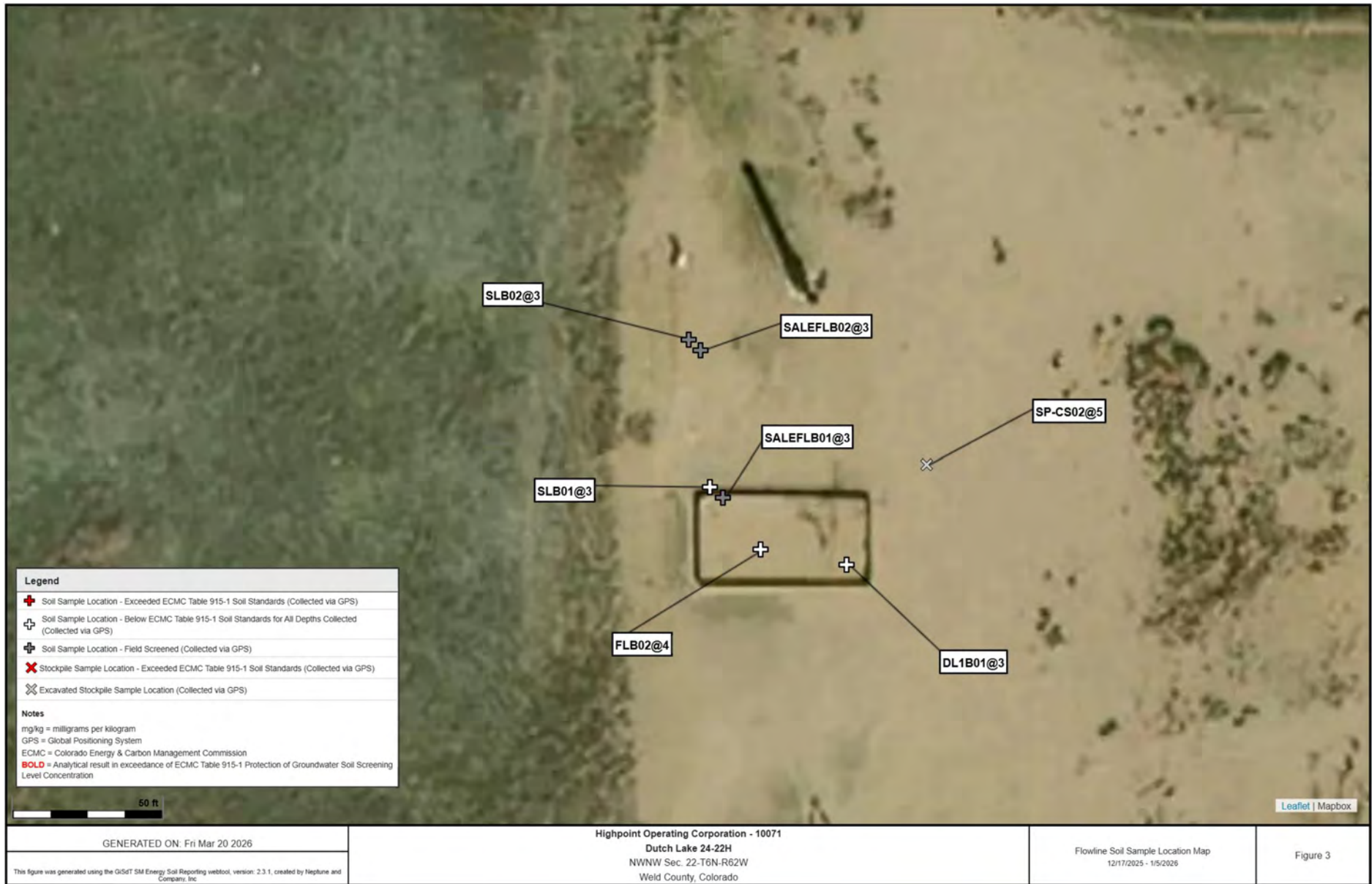
Figures



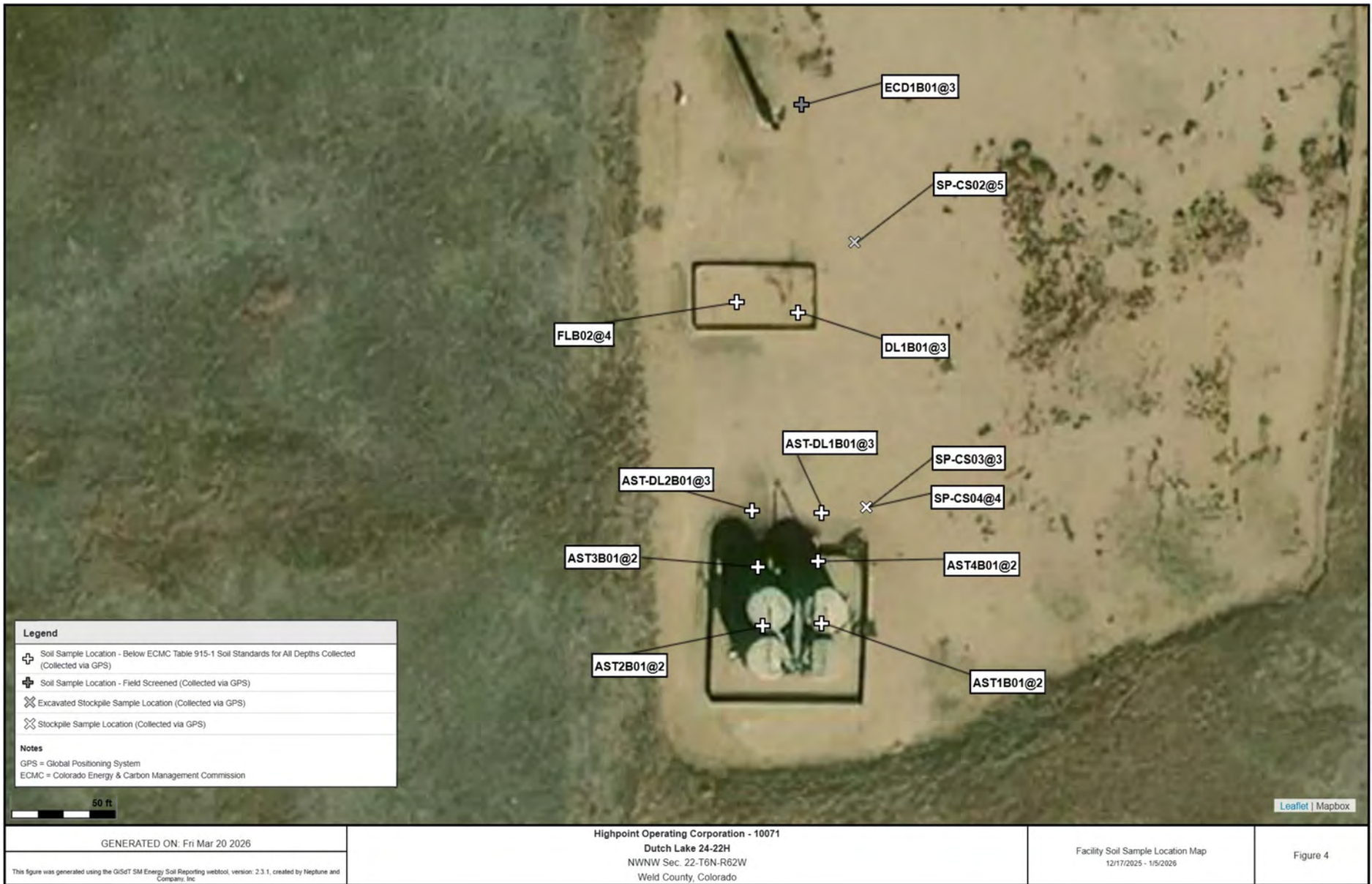
This report was generated using the GiSDT SM Energy Data Management and Reporting webtool, Version 2.3.1, created by Neptune and Company, Inc.



This report was generated using the GiSDT SM Energy Data Management and Reporting webtool, Version 2.3.1, created by Neptune and Company, Inc.



This report was generated using the GiSdT SM Energy Data Management and Reporting webtool, Version 2.3.1, created by Neptune and Company, Inc.



This report was generated using the GiSDT SM Energy Data Management and Reporting webtool, Version 2.3.1, created by Neptune and Company, Inc.



This report was generated using the GiSdT SM Energy Data Management and Reporting webtool, Version 2.3.1, created by Neptune and Company, Inc.

Photographic Log



Sample ID: **SP-CS02@5**
Location:
40.47911819, -104.31489048


Depth (ft): 5




Sample ID: **DL1B01@3**
Location:
40.47905702, -104.31495482

Depth (ft): 3



<p>Sample ID: SALEFLB01@3 Location: 40.47909773, -104.31505496</p>	
<p>Depth (ft): 3</p>	

<p>Sample ID: FLB02@4 Location: 40.47906621, -104.31502412</p>	
<p>Depth (ft): 4</p>	

Sample ID: SALEFLB02@3 Location: 40.47918802, -104.31507247
Depth (ft): 3



Sample ID: ECD1B01@3 Location: 40.47923802, -104.31495075
Depth (ft): 3



Sample ID: AST-DL2B01@3 Location: 40.4788861, -104.31500767
Depth (ft): 3



Sample ID: AST-DL1B01@3 Location: 40.47888355, -104.31492744
Depth (ft): 3




Sample ID: SP-CS03@3 Location: 40.47888867, -104.31487763
Depth (ft): 3



Sample ID: 24-22WHB01@6 Location: 40.47914313, -104.314468
Depth (ft): 6



<p>Sample ID: 24-22WHN01 @5 Location: 40.47915825, -104.31448196</p>	
<p>Depth (ft): 5</p>	


<p>Sample ID: 24-22WHS01 @5 Location: 40.47913171, -104.31446788</p>	
<p>Depth (ft): 5</p>	


Sample ID: 24-22WHE01 @5 Location: 40.47913689, -104.31445653
Depth (ft): 5



Sample ID: 24-22WHW01 @5 Location: 40.4791386, -104.31448242
Depth (ft): 5



<p>Sample ID: FLB01@4 Location: 40.47914261, -104.31449133</p>	
<p>Depth (ft): 4</p>	


<p>Sample ID: SP-CS01@6 Location: 40.47919355, -104.31443389</p>	
<p>Depth (ft): 6</p>	


Sample ID: AST1B01@2 Location: 40.47878819, -104.31492837
Depth (ft): 2



Sample ID: AST2B01@2 Location: 40.47878615, -104.31499491
Depth (ft): 2



<p>Sample ID: AST3B01@2 Location: 40.47883667, -104.31500036</p>	
<p>Depth (ft): 2</p>	

<p>Sample ID: AST4B01@2 Location: 40.4788418, -104.31493223</p>	
<p>Depth (ft): 2</p>	

Sample ID: BG01@3 Location: 40.47860392, -104.3142478
Depth (ft): 3





Sample ID: BG01@4 Location: 40.47860359, -104.31424698
Depth (ft): 4



<p>Sample ID: BG01@5 Location: 40.4786067, -104.31424981</p>	
<p>Depth (ft): 5</p>	

<p>Sample ID: BG02@3 Location: 40.47861009, -104.31429327</p>	
<p>Depth (ft): 3</p>	

<p>Sample ID: BG02@4 Location: 40.47861048, -104.31429154</p>	
<p>Depth (ft): 4</p>	

<p>Sample ID: BG02@5 Location: 40.47861076, -104.31429108</p>	
<p>Depth (ft): 5</p>	