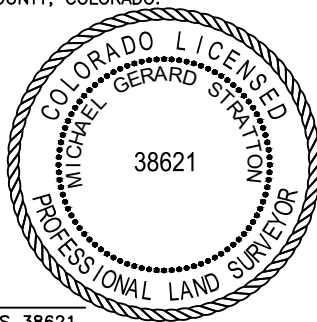


LAND SURVEYOR'S CERTIFICATION

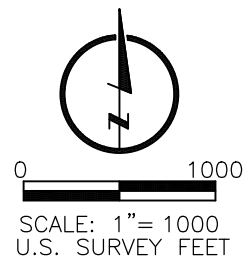
LAMP RYNEARSON, INC. OF FT. COLLINS, COLORADO HAS, IN ACCORDANCE WITH A REQUEST FROM DAN HARRINGTON OF CRESTONE PEAK RESOURCES OPERATING LLC, DETERMINED THE SURFACE LOCATION OF THE WELL DESIGNATED AS STATE LA PLATA 5-65 13-14-15-16 1BH TO BE 1495' FROM THE SOUTH LINE AND 1727' FROM THE WEST LINE OF SECTION 13, TOWNSHIP 5 SOUTH, RANGE 65 WEST OF THE 6TH P.M., ARAPAHOE COUNTY, COLORADO.



MICHAEL GERARD STRATTON COLORADO PLS 38621
 DATE OF SURVEY: 04/08/2024 (SECTION CONTROL)
 DATE OF SURVEY: 11/18/2025 (WELL LOCATION)

SURFACE POINT			LANDING POINT/BEGIN HORIZONTAL COMPLETION ZONE			BOTTOM HOLE/END HORIZONTAL COMPLETION ZONE					
1495'	FSL	1727'	FWL	910'	FNL	2473'	FWL	910'	FNL	1650'	FWL

SURFACE POINT					LANDING POINT		BOTTOM HOLE	
LATITUDE	LONGITUDE	ELEVATION	PDOP	OPERATOR	LATITUDE	LONGITUDE	LATITUDE	LONGITUDE
39.613478	-104.616656	5899	1.606	V.CARMASI	39.621365	-104.613904	39.621439	-104.673301



- LEGEND**
- ◆ COMPUTED ALIQUOT CORNER
 - ALIQUOT CORNER
 - ⊙ BOTTOM HOLE
 - ⊙^{MC} ALIQUOT WITNESS CORNER
 - △ LANDING POINT
 - ⊙ PROPOSED WELL
 - A.C. ALUMINUM CAP
 - R.B. RANGE BOX
 - CONC. CONCRETE
 - I.C.V.B. IRRIGATION CONTROL VALVE BOX

BASIS OF BEARING:

THE WEST LINE OF THE SOUTHWEST QUARTER OF SECTION 13-T5S-R65W BEARS N00°33'56"E FOR A DISTANCE OF 2640.42' FEET BETWEEN THE WEST QUARTER CORNER OF SECTION 13 MONUMENTED BY A 2-1/2" PIPE WITH A 3-1/4" ALUMINUM CAP STAMPED, "PLS 22573", AND AT THE SOUTHWEST CORNER OF SECTION 13, MONUMENTED BY A 2-1/2" PIPE WITH A 3-1/4" ALUMINUM CAP STAMPED, "PLS 20142", BASED ON A LOW DISTORTION PROJECTION DEVELOPED BY LAMP RYNEARSON USING THE NORTH AMERICAN DATUM OF 1983(2011).

NOTES:

- DISTANCES ARE MEASURED PERPENDICULAR TO NEAREST SECTION LINE AND ARE SHOWN ON THE SAME SIDE OF THE SECTION LINE WHERE THE WELL IS LOCATED.
- THIS MAP DOES NOT REPRESENT A MONUMENTED BOUNDARY SURVEY. SIXTEENTH CORNER LOCATIONS ARE COMPUTED, UNLESS OTHERWISE NOTED.
- BOTTOM HOLE LOCATIONS AND HORIZONTAL COMPLETION ZONE PROVIDED BY OTHERS.
- ALL REBAR AND CAPS ARE MEASURED IN INCHES.
- ELEVATIONS ARE BASED ON THE NORTH AMERICAN VERTICAL DATUM OF 1988 AS MEASURED BY GNSS OBSERVATIONS USING GEOID 18.

LAMP RYNEARSON

LAMP RYNEARSON.COM



CRESTONE PEAK RESOURCES OPERATING LLC

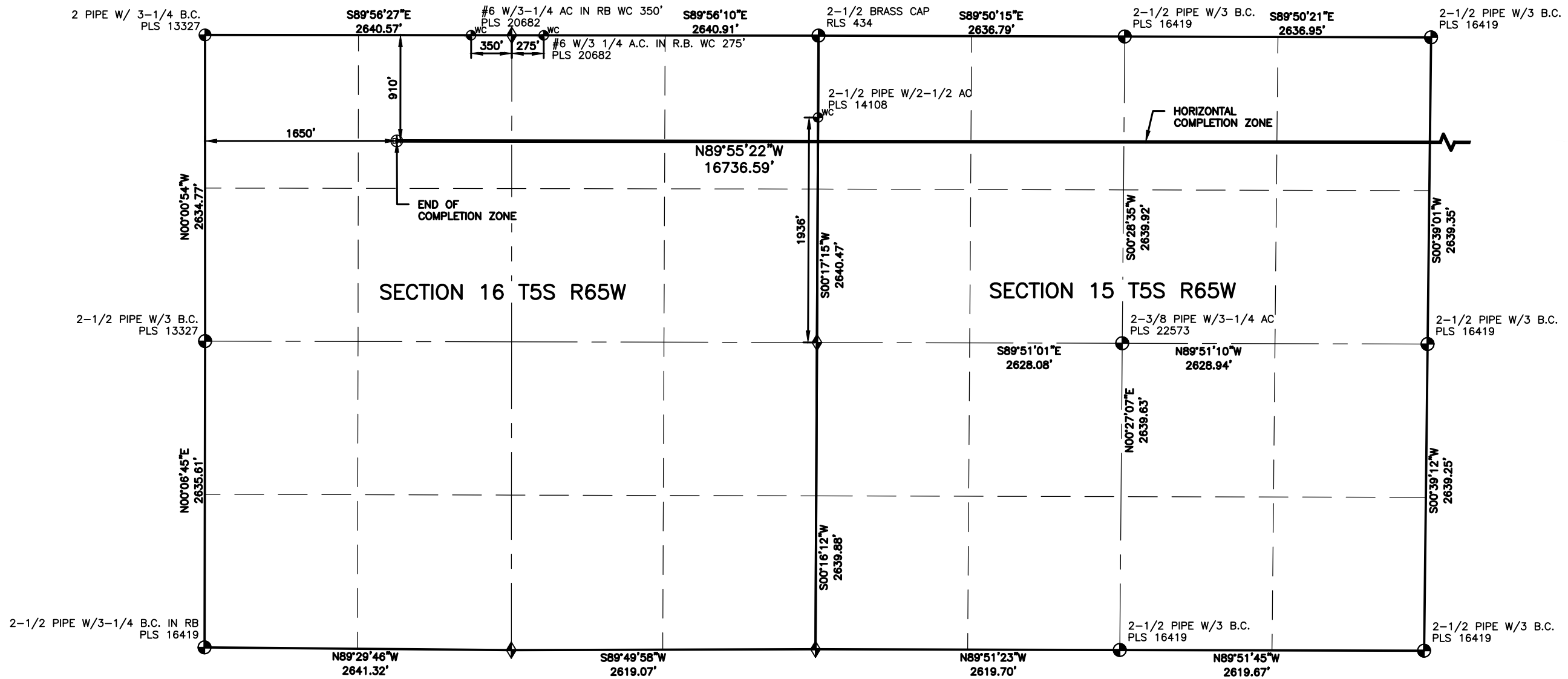
DESIGNER / DRAFTER
JOSH CROAK
 REVIEWER
MICHAEL STRATTON
 PROJECT NUMBER
0222033.01
 DATE
04/14/2026
 SURFACE LOCATION
NE/4 SW/4 SEC 13 T5S R65W
 BOOK AND PAGE

WELL LOCATION PLAT

CRESTONE PEAK RESOURCES OPERATING LLC

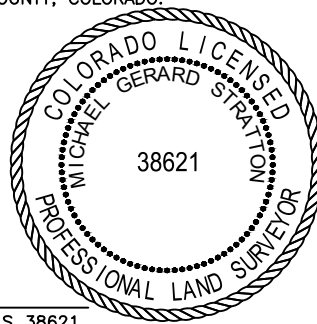
STATE LA PLATA 5-65 13-14-15-16 1BH

L:\Engineering\0222033.01_Civitas_State_La_Plata_South_Survey\DRAWINGS\EXHIBITS\STATE LA PLATA 5-65 13-14-15-16 1BH.dwg, 4/15/2026 1:23:50 PM, JOSHUA A. CROAK, LAMP RYNEARSON



LAND SURVEYOR'S CERTIFICATION

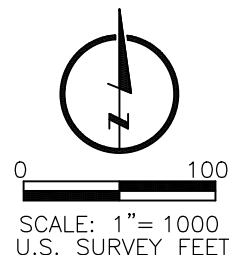
LAMP RYNEARSON, INC. OF FT. COLLINS, COLORADO HAS, IN ACCORDANCE WITH A REQUEST FROM DAN HARRINGTON OF CRESTONE PEAK RESOURCES OPERATING LLC, DETERMINED THE SURFACE LOCATION OF THE WELL DESIGNATED AS STATE LA PLATA 5-65 13-14-15-16 1BH TO BE 1495' FROM THE SOUTH LINE AND 1727' FROM THE WEST LINE OF SECTION 13, TOWNSHIP 5 SOUTH, RANGE 65 WEST OF THE 6TH P.M., ARAPAHOE COUNTY, COLORADO.



MICHAEL GERARD STRATTON COLORADO PLS 38621
 DATE OF SURVEY: 04/08/2024 (SECTION CONTROL)
 DATE OF SURVEY: 11/18/2025 (WELL LOCATION)

SURFACE POINT			LANDING POINT/BEGIN HORIZONTAL COMPLETION ZONE			BOTTOM HOLE/END HORIZONTAL COMPLETION ZONE					
1495'	FSL	1727'	FWL	910'	FNL	2473'	FWL	910'	FNL	1650'	FWL

SURFACE POINT					LANDING POINT		BOTTOM HOLE	
LATITUDE	LONGITUDE	ELEVATION	PDOP	OPERATOR	LATITUDE	LONGITUDE	LATITUDE	LONGITUDE
39.613478	-104.616656	5899	1.606	V.CARMASI	39.621365	-104.613904	39.621439	-104.673301



- LEGEND**
- ◆ COMPUTED ALIQUOT CORNER
 - ⊕ ALIQUOT CORNER
 - ⊙ BOTTOM HOLE
 - ⊙^{WC} ALIQUOT WITNESS CORNER
 - △ LANDING POINT
 - ⊙ PROPOSED WELL
 - A.C. ALUMINUM CAP
 - R.B. RANGE BOX
 - CONC. CONCRETE
 - I.C.V.B. IRRIGATION CONTROL VALVE BOX

BASIS OF BEARING:

THE WEST LINE OF THE SOUTHWEST QUARTER OF SECTION 13-T5S-R65W BEARS N00°33'56"E FOR A DISTANCE OF 2640.42' FEET BETWEEN THE WEST QUARTER CORNER OF SECTION 13 MONUMENTED BY A 2-1/2" PIPE WITH A 3-1/4" ALUMINUM CAP STAMPED, "PLS 22573", AND AT THE SOUTHWEST CORNER OF SECTION 13, MONUMENTED BY A 2-1/2" PIPE WITH A 3-1/4" ALUMINUM CAP STAMPED, "PLS 20142", BASED ON A LOW DISTORTION PROJECTION DEVELOPED BY LAMP RYNEARSON USING THE NORTH AMERICAN DATUM OF 1983(2011).

NOTES:

- DISTANCES ARE MEASURED PERPENDICULAR TO NEAREST SECTION LINE AND ARE SHOWN ON THE SAME SIDE OF THE SECTION LINE WHERE THE WELL IS LOCATED.
- THIS MAP DOES NOT REPRESENT A MONUMENTED BOUNDARY SURVEY. SIXTEENTH CORNER LOCATIONS ARE COMPUTED, UNLESS OTHERWISE NOTED.
- BOTTOM HOLE LOCATIONS AND HORIZONTAL COMPLETION ZONE PROVIDED BY OTHERS.
- ALL REBAR AND CAPS ARE MEASURED IN INCHES.
- ELEVATIONS ARE BASED ON THE NORTH AMERICAN VERTICAL DATUM OF 1988 AS MEASURED BY GNSS OBSERVATIONS USING GEOID 18.

LAMP RYNEARSON
 LAMP RYNEARSON, INC.
 OMAHA, NEBRASKA
 14710 W. DODGE RD., STE. 100 (402)496-2498
 FORT COLLINS, COLORADO
 4715 INNOVATION DR., STE. 100 (970)228-0342
 KANSAS CITY, MISSOURI
 9001 STATE LINE RD., STE. 200 (816)361-0440
 LAMP RYNEARSON.COM

CIVITAS
 CRESTONE PEAK RESOURCES OPERATING LLC

DESIGNER / DRAFTER
JOSH CROAK
 REVIEWER
MICHAEL STRATTON
 PROJECT NUMBER
0222033.01
 DATE
04/14/2026
 SURFACE LOCATION
NE/4 SW/4 SEC 13 T5S R65W
 BOOK AND PAGE

WELL LOCATION PLAT

CRESTONE PEAK RESOURCES OPERATING LLC

STATE LA PLATA 5-65 13-14-15-16 1BH