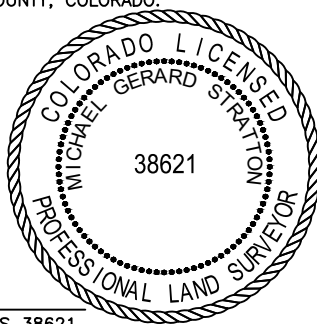


LAND SURVEYOR'S CERTIFICATION

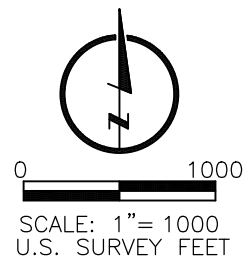
LAMP RYNEARSON, INC. OF FT. COLLINS, COLORADO HAS, IN ACCORDANCE WITH A REQUEST FROM DAN HARRINGTON OF CRESTONE PEAK RESOURCES OPERATING LLC, DETERMINED THE SURFACE LOCATION OF THE WELL DESIGNATED AS STATE LA PLATA 5-65 13-14-15-16 4BH TO BE 1394' FROM THE SOUTH LINE AND 1728' FROM THE WEST LINE OF SECTION 13, TOWNSHIP 5 SOUTH, RANGE 65 WEST OF THE 6TH P.M., ARAPAHOE COUNTY, COLORADO.



MICHAEL GERARD STRATTON COLORADO PLS 38621
 DATE OF SURVEY: 04/08/2024 (SECTION CONTROL)
 DATE OF SURVEY: 11/18/2025 (WELL LOCATION)

SURFACE POINT			LANDING POINT/BEGIN HORIZONTAL COMPLETION ZONE			BOTTOM HOLE/END HORIZONTAL COMPLETION ZONE					
1394'	FSL	1728'	FWL	440'	FSL	2475'	FWL	440'	FSL	1650'	FWL

SURFACE POINT					LANDING POINT		BOTTOM HOLE	
LATITUDE	LONGITUDE	ELEVATION	PDOP	OPERATOR	LATITUDE	LONGITUDE	LATITUDE	LONGITUDE
39.613202	-104.616658	5900	1.613	V.CARMASI	39.610579	-104.614042	39.610643	-104.673314



NOTES:

- DISTANCES ARE MEASURED PERPENDICULAR TO NEAREST SECTION LINE AND ARE SHOWN ON THE SAME SIDE OF THE SECTION LINE WHERE THE WELL IS LOCATED.
- THIS MAP DOES NOT REPRESENT A MONUMENTED BOUNDARY SURVEY. SIXTEENTH CORNER LOCATIONS ARE COMPUTED, UNLESS OTHERWISE NOTED.
- BOTTOM HOLE LOCATIONS AND HORIZONTAL COMPLETION ZONE PROVIDED BY OTHERS.
- ALL REBAR AND CAPS ARE MEASURED IN INCHES.
- ELEVATIONS ARE BASED ON THE NORTH AMERICAN VERTICAL DATUM OF 1988 AS MEASURED BY GNSS OBSERVATIONS USING GEOID 18.

- LEGEND**
- ◆ COMPUTED ALIQUOT CORNER
 - ⊙ ALIQUOT CORNER
 - ⊙ BH BOTTOM HOLE
 - ⊙ MC ALIQUOT WITNESS CORNER
 - △ LANDING POINT
 - ⊙ PROPOSED WELL
 - A.C. ALUMINUM CAP
 - R.B. RANGE BOX
 - CONC. CONCRETE
 - I.C.V.B. IRRIGATION CONTROL VALVE BOX

BASIS OF BEARING:

THE WEST LINE OF THE SOUTHWEST QUARTER OF SECTION 13-T5S-R65W BEARS N00°33'56"E FOR A DISTANCE OF 2640.42' FEET BETWEEN THE WEST QUARTER CORNER OF SECTION 13 MONUMENTED BY A 2-1/2" PIPE WITH A 3-1/4" ALUMINUM CAP STAMPED, "PLS 22573", AND AT THE SOUTHWEST CORNER OF SECTION 13, MONUMENTED BY A 2-1/2" PIPE WITH A 3-1/4" ALUMINUM CAP STAMPED, "PLS 20142", BASED ON A LOW DISTORTION PROJECTION DEVELOPED BY LAMP RYNEARSON USING THE NORTH AMERICAN DATUM OF 1983(2011).

LAMP RYNEARSON

LAMP RYNEARSON.COM



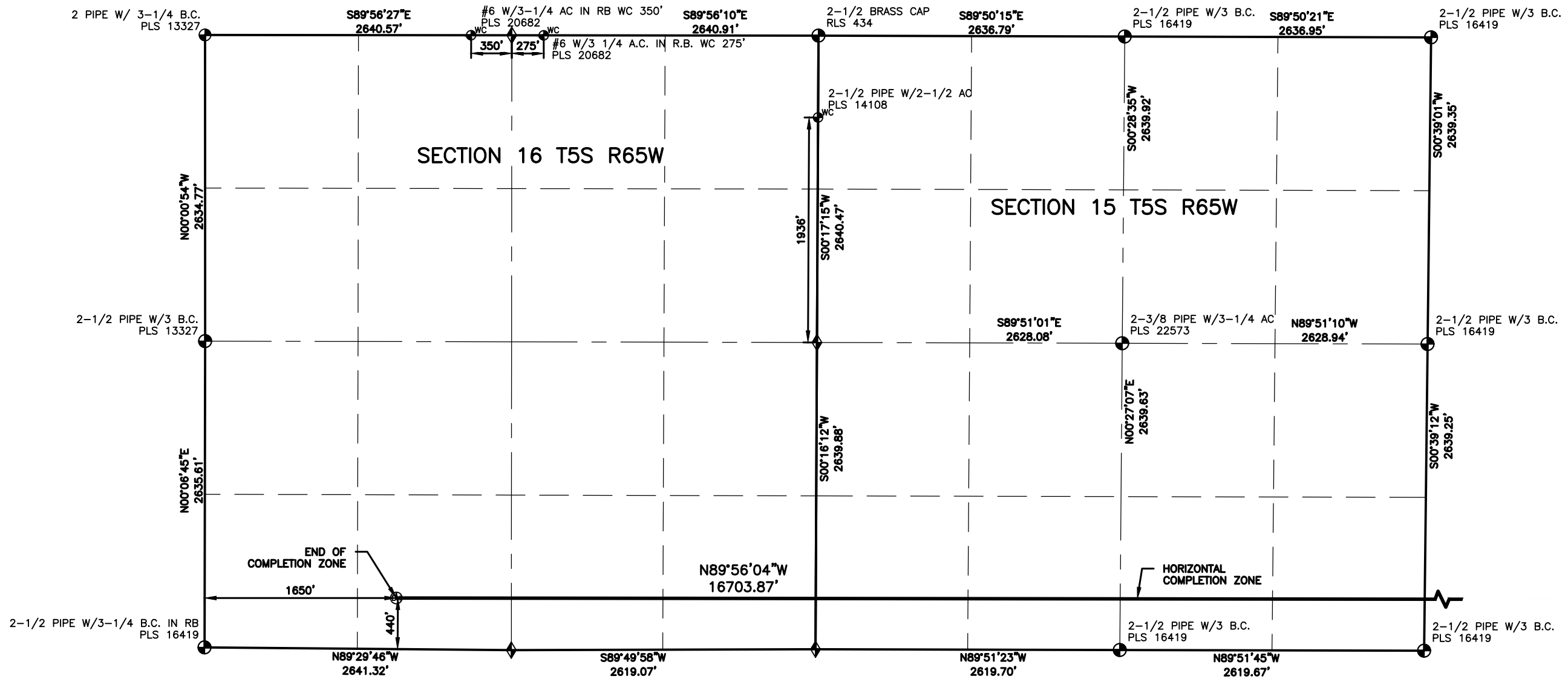
CRESTONE PEAK RESOURCES OPERATING LLC

DESIGNER / DRAFTER
JOSH CROAK
 REVIEWER
MICHAEL STRATTON
 PROJECT NUMBER
0222033.01
 DATE
04/14/2026
 SURFACE LOCATION
NE/4 SW/4 SEC 13 T5S R65W
 BOOK AND PAGE

WELL LOCATION PLAT

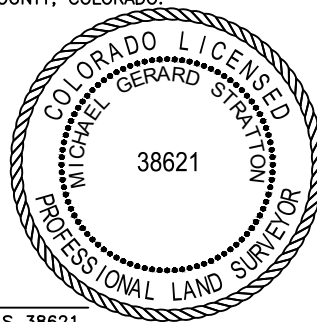
CRESTONE PEAK RESOURCES OPERATING LLC

STATE LA PLATA 5-65 13-14-15-16 4BH



LAND SURVEYOR'S CERTIFICATION

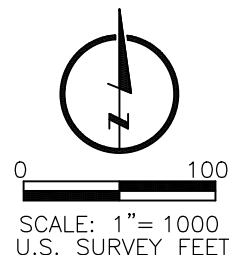
LAMP RYNEARSON, INC. OF FT. COLLINS, COLORADO HAS, IN ACCORDANCE WITH A REQUEST FROM DAN HARRINGTON OF CRESTONE PEAK RESOURCES OPERATING LLC, DETERMINED THE SURFACE LOCATION OF THE WELL DESIGNATED AS STATE LA PLATA 5-65 13-14-15-16 4BH TO BE 1394' FROM THE SOUTH LINE AND 1728' FROM THE WEST LINE OF SECTION 13, TOWNSHIP 5 SOUTH, RANGE 65 WEST OF THE 6TH P.M., ARAPAHOE COUNTY, COLORADO.



MICHAEL GERARD STRATTON COLORADO PLS 38621
 DATE OF SURVEY: 04/08/2024 (SECTION CONTROL)
 DATE OF SURVEY: 11/18/2025 (WELL LOCATION)

SURFACE POINT			LANDING POINT/BEGIN HORIZONTAL COMPLETION ZONE			BOTTOM HOLE/END HORIZONTAL COMPLETION ZONE					
1394'	FSL	1728'	FWL	440'	FSL	2475'	FWL	440'	FSL	1650'	FWL

SURFACE POINT					LANDING POINT		BOTTOM HOLE	
LATITUDE	LONGITUDE	ELEVATION	PDOP	OPERATOR	LATITUDE	LONGITUDE	LATITUDE	LONGITUDE
39.613202	-104.616658	5900	1.613	V.CARMASI	39.610579	-104.614042	39.610643	-104.673314



NOTES:

- DISTANCES ARE MEASURED PERPENDICULAR TO NEAREST SECTION LINE AND ARE SHOWN ON THE SAME SIDE OF THE SECTION LINE WHERE THE WELL IS LOCATED.
- THIS MAP DOES NOT REPRESENT A MONUMENTED BOUNDARY SURVEY. SIXTEENTH CORNER LOCATIONS ARE COMPUTED, UNLESS OTHERWISE NOTED.
- BOTTOM HOLE LOCATIONS AND HORIZONTAL COMPLETION ZONE PROVIDED BY OTHERS.
- ALL REBAR AND CAPS ARE MEASURED IN INCHES.
- ELEVATIONS ARE BASED ON THE NORTH AMERICAN VERTICAL DATUM OF 1988 AS MEASURED BY GNSS OBSERVATIONS USING GEOID 18.

LEGEND

◆	COMPUTED ALIQUOT CORNER	⊙	PROPOSED WELL
⊕	ALIQUOT CORNER	A.C.	ALUMINUM CAP
⊙	BOTTOM HOLE	R.B.	RANGE BOX
⊕ ^{WC}	ALIQUOT WITNESS CORNER	CONC.	CONCRETE
△	LANDING POINT	I.C.V.B.	IRRIGATION CONTROL VALVE BOX

BASIS OF BEARING:

THE WEST LINE OF THE SOUTHWEST QUARTER OF SECTION 13-T5S-R65W BEARS N00°33'56"E FOR A DISTANCE OF 2640.42' FEET BETWEEN THE WEST QUARTER CORNER OF SECTION 13 MONUMENTED BY A 2-1/2" PIPE WITH A 3-1/4" ALUMINUM CAP STAMPED, "PLS 22573", AND AT THE SOUTHWEST CORNER OF SECTION 13, MONUMENTED BY A 2-1/2" PIPE WITH A 3-1/4" ALUMINUM CAP STAMPED, "PLS 20142", BASED ON A LOW DISTORTION PROJECTION DEVELOPED BY LAMP RYNEARSON USING THE NORTH AMERICAN DATUM OF 1983(2011).

 LAMP RYNEARSON LAMP RYNEARSON.COM	OMAHA, NEBRASKA 14710 W. DODGE RD., STE. 100 (402)496-2498	DESIGNER / DRAFTER JOSH CROAK
	FORT COLLINS, COLORADO 4715 INNOVATION DR., STE. 100 (970)228-0342	REVIEWER MICHAEL STRATTON
KANSAS CITY, MISSOURI 9001 STATE LINE RD., STE. 200 (816)361-0440	PROJECT NUMBER 0222033.01	DATE 04/14/2026
 CIVITAS CRESTONE PEAK RESOURCES OPERATING LLC	SURFACE LOCATION NE/4 SW/4 SEC 13 T5S R65W	BOOK AND PAGE

WELL LOCATION PLAT

CRESTONE PEAK RESOURCES OPERATING LLC

STATE LA PLATA 5-65 13-14-15-16 4BH

L:\Engineering\0222033.01_Civitas_State_La_Plata_South_Survey\DRAWINGS\EXHIBITS\STATE_LA_PLATA_5-65_13-14-15-16_4BH.dwg 4/15/2026 1:27:07 PM JOSUUA A. CROAK, LAMP RYNEARSON