



Summit DJ-O Operating, LLC

Spill/Release (Form 19): Site
Documentation and Analytical
Laboratory Results

Summit DJ-O Operating, LLC
67509 County Road 71
Grover, CO 80729

Critter Creek 16" LACT Unit Spill/Release

Project: Critter Creek 16" LACT Unit Spill/Release

Location: 40.916346, -104.430332

Incident Date: January 17, 2026

Operator: Summit Midstream

Incident Description and Initial Response

On January 17, 2026, a release was discovered at the Critter Creek 16" LACT Unit as a result of a cracked ¾-inch nipple that allowed product to spray onto the surrounding ground surface. Upon discovery, immediate response actions were implemented. The LACT unit was shut down, isolated, and shut in to prevent any additional product from being released. Initial cleanup activities included the use of a vacuum truck to recover liquid products present on the ground surface prior to infiltration into underlying soils.

Site Investigation

On February 18, 2026, H2E directed a targeted excavation at the spill location to further assess and remediate potentially impacted soil at the Critter Creek 16" LACT Unit (40.916346, -104.430332). During excavation, soil was screened using a photoionization detector (PID) to evaluate the presence of volatile organic compounds (VOCs) and to delineate the horizontal and vertical extent of any potential impacts. Excavation continued until PID readings indicated that VOCs were no longer detectable.

During the investigation, no visible soil staining was observed, and no petroleum-related odors were identified. Once excavation limits were reached based on PID screening results, soil samples were collected to support site characterization and submitted for laboratory analysis.

Laboratory Analysis and Results

Collected soil samples were analyzed using the full ECMC Table 915-1 analytical suite, and laboratory results were received on March 12, 2026. As summarized in the analytical data tables, all analytes were below the applicable ECMC Table 915-1 soil screening levels with the exception of arsenic and one elevated electrical conductivity (EC) value identified in soil sample 13.

Detected arsenic concentrations in site soil samples ranged from 2.34 mg/kg to 3.92 mg/kg. Two background soil samples collected from the surrounding area exhibited arsenic concentrations ranging from 2.15 mg/kg to 3.48 mg/kg. The arsenic concentrations identified within the excavation are consistent with local background conditions and fall within the 1.25× maximum background concentration criteria allowed under ECMC Table 915-1.

Detected selenium concentrations in site soil samples ranged from 2.24 mg/kg to 3.67 mg/kg. Background soil samples collected from the surrounding area exhibited selenium concentrations ranging from 2.16 mg/kg to 4.10 mg/kg. These concentrations indicate that selenium levels within the excavation are also consistent with local background conditions and remain within the 1.25× maximum background concentration limits established in Table 915-1.

One soil sample, identified as Sample 13, exhibited an elevated EC value. In response to this result, additional excavation was conducted in the affected area. Following the additional soil removal, confirmation soil samples and additional background samples were collected and submitted for EC analysis. Review of the subsequent analytical results indicated that no elevated EC values remained following completion of the additional excavation activities.

Groundwater Evaluation

Summit requests that all analytical data be evaluated using Residential Soil Screening Level (RSSL) criteria. No impacts or threats to surface water or jurisdictionally mapped wetlands were identified, and site conditions indicate that there is no likely pathway to groundwater.

A review of Division of Water Resources (DWR) documentation for water well receipt number 3608771 indicates that the nearest active water well, permitted under well permit number 271318, is located approximately 4,336 feet southeast of the spill location. The documented static water level for this well is approximately 40 feet below ground surface.

An additional water well, identified under DWR receipt number 9063720 and well permit number 33975, is located approximately 4,172 feet west of the spill location. The documented static water level for this well is approximately 28 feet below ground surface, as noted in the Form 2A for the Bison Critter Creek 16 SE Pad. This well was originally drilled in 1968 and is currently listed as abandoned in the DWR database.

Based on the distance to the nearest water wells, documented static water levels of 28 feet or greater, and site conditions observed during the investigation, the release did not impact and is not reasonably expected to impact groundwater.

Closure Request

Summit Midstream requests that Residential Soil Screening Levels (RSSLs) be applied in lieu of Protection of Groundwater soil screening levels, as there are no identified impacts or credible pathways to groundwater, surface water, or jurisdictionally mapped wetlands. The nearest water wells to the release location are located more than 4,000 feet away, with documented static water levels of approximately 28 feet and 40 feet below ground surface, indicating no complete pathway to groundwater.

The release was promptly identified, shut in, and recovered, and impacted soil was excavated to PID non-detect conditions. Confirmation soil samples collected following excavation were analyzed using the full ECMC Table 915-1 analytical suite. All analytical results were below applicable RSSLs or consistent with local background concentrations, including arsenic and selenium, which were evaluated against background samples and met the 1.25× background criteria. One isolated elevated electrical conductivity result was addressed through additional excavation and follow-up sampling confirmed no remaining elevated EC values. No visible staining or petroleum odors were observed. Based on these findings, Summit Midstream believes the site meets applicable ECMC closure criteria and no further assessment or remediation is warranted.



Form 19 Information Summary	
Site Name	Critter Creek 16" LACT Unit
API #	NA
Location ID	NA
Coordinates	40.916346 / -104.430332
S/T/R	SESE 16/11N/63W
Cause of Release	Equipment Failure
Date of Discovery	1/17/2026
Spill Type	Recent Spill
Land Use	Non-Cropland
Weather Conditions	30 degrees F; WNW wind; 25 mph; Fair
Surface Water	Simpson Creek 3,537 feet NE
Number of Water Wells within a 0.5 Mile Radius	0
Distance to Closest Active Water Well	4,336 feet SE
Approximate Depth to Groundwater	40 feet below ground surface
Distance to Nearest Wetland	Riverine 3,537 feet NE
Sensitive Area / Habitat	Mule Deer Severe Winter Range and Mule Deer Winter Concentration Area
100 Year Floodplain	No
Release in Municipality	No
Fluid Released	Presumed produced fluids
Volume of Release	1bbl to 5bbl
Livestock Present	No
Soil Type(s)	Ascalon fine sandy loam
<p>Notes:</p> <p>On February 18, 2026, H2E directed an excavation at the Critter Creek 16" LACT unit (40.916346, -104.430332) in response to a recent spill. During excavation activities, soil was screened using a photoionization detector (PID) to evaluate the presence of volatile organic compounds (VOCs). Once PID readings indicated VOCs were no longer detectable, soil samples were collected to support the site investigation.</p> <p>No visible soil staining or petroleum related odors were observed during the investigation. Collected soil samples were submitted for laboratory analysis using the full ECMC Table 915-1 analytical suite.</p> <p>Laboratory analytical results were received on March 12, 2026. As summarized in the attached analytical data tables, all collected soil samples were below the applicable ECMC Table 915-1 soil screening levels, with the exception of arsenic and an elevated electrical conductivity (EC) value identified in soil sample 13.</p> <p>Detected arsenic concentrations in site soil samples ranged from 2.34 mg/kg to 3.92 mg/kg. Two background soil samples collected from the surrounding area also exhibited elevated arsenic concentrations, with detected values ranging from 2.15 mg/kg to 3.48 mg/kg. These results indicate that the arsenic concentrations observed within the excavation are consistent with local background conditions.</p> <p>In response to the elevated EC value identified in soil sample 13, additional excavation was conducted. Following the excavation, further soil samples were collected from the newly excavated area, along with additional background soil samples, and submitted for EC analysis. Upon receipt and review of the subsequent analytical results, no elevated EC values were identified following the additional excavation activities.</p>	

Summary of Volatile Organic Soil Chemistry Data													
Sample ID	Sample Date	Depth (in)	Benzene (mg/kg)	Toluene (mg/kg)	Ethyl-Benzene (mg/kg)	Xylenes (mg/kg)	1,2,4-TrimethylBenzene (mg/kg)	1,3,5-TrimethylBenzene (mg/kg)	Naphthalene (mg/kg)	TPH (mg/kg)	GRO (mg/kg)	DRO (mg/kg)	ORO (mg/kg)
ECMC Table 915-1 Limits (Residential SSL)			1.2	490	5.8	58	30	27	2	500	Summation of GRO+DRO+ORO must be less than 500 mg/kg		
ECMC Table 915-1 Limits (Protection of Groundwater SSL)			0.0026	0.69	0.78	9.9	0.0081	0.0087	0.0038	500	Summation of GRO+DRO+ORO must be less than 500 mg/kg		
SS1	2/18/2026	2	<0.0015	<0.0016	<0.0014	<0.0043	<0.0016	<0.0015	0.00356	<0.223	<0.223	Not Detected	Not Detected
SS2	2/18/2026	2	Not Detected	<0.0016	Not Detected	<0.0043	<0.0016	<0.0015	Not Detected	<500	<0.223	<100.00	<100.00
SS3	2/18/2026	2	Not Detected	<0.0016	<0.0014	<0.0043	<0.0016	<0.0015	<0.00306	<500	<0.223	<100.00	<100.00
SS4	2/18/2026	2	Not Detected	<0.0016	<0.0014	<0.0043	<0.0016	<0.0015	0.00500	<0.223	<0.223	Not Detected	Not Detected
SS5	2/18/2026	2	Not Detected	<0.0016	<0.0014	<0.0043	<0.0016	<0.0015	Not Detected	<500	<0.223	<100.00	<100.00
SS6	2/18/2026	2	Not Detected	<0.0016	<0.0014	<0.0043	<0.0016	<0.0015	Not Detected	<500	<0.223	<100.00	109.58
SS7	2/18/2026	2	<0.0015	<0.0016	<0.0014	<0.0043	<0.0016	<0.0015	0.00377	<0.223	<0.223	Not Detected	Not Detected
SS8	2/18/2026	2	Not Detected	<0.0016	<0.0014	<0.0043	<0.0016	<0.0015	Not Detected	<0.223	<0.223	Not Detected	Not Detected
SS9	2/18/2026	12	Not Detected	<0.0016	<0.0014	<0.0043	<0.0016	<0.0015	Not Detected	<0.223	<0.223	Not Detected	Not Detected
SS10	2/18/2026	12	<0.0015	<0.0016	<0.0014	<0.0043	<0.0016	<0.0015	Not Detected	<0.223	<0.223	Not Detected	Not Detected
SS11	2/18/2026	12	Not Detected	<0.0016	<0.0014	<0.0043	<0.0016	<0.0015	Not Detected	<0.223	<0.223	Not Detected	Not Detected
SS12	2/18/2026	12	<0.0015	<0.0016	<0.0014	<0.0043	<0.0016	<0.0015	Not Detected	<500	<0.223	<100.00	Not Detected
SS13	2/18/2026	2	<0.0015	<0.0016	<0.0014	<0.0043	<0.0016	<0.0015	Not Detected	<500	<0.223	<100.00	Not Detected
SS14	2/18/2026	Background (Surface)	<0.0015	<0.0016	<0.0014	<0.0043	<0.0016	<0.0015	Not Detected	<0.223	<0.223	Not Detected	Not Detected
SS15	2/18/2026	Background (Surface)	<0.0015	<0.0016	<0.0014	<0.0043	<0.0016	<0.0015	<0.00306	<0.223	<0.223	Not Detected	Not Detected

*Non-bold values do not exceed ECMC Table 915-1 limit(s) for Protection of Groundwater SSL and Residential SSL.

***Bold** values exceed ECMC Table 915-1 limit(s) for Protection of Groundwater SSL and do not exceed the limit(s) for Residential SSL.

Summary of Semi-Volatile Organic Soil Chemistry Data

Sample ID	Sample Date	Depth (in)	Acenaphthene (mg/kg)	Anthracene (mg/kg)	Benzo (a) Anthracene (mg/kg)	Benzo (a) Pyrene (mg/kg)	Benzo (b) Fluoranthene (mg/kg)	Benzo (k) Fluoranthene (mg/kg)	Chrysene (mg/kg)	Dibenzo (a,h) Anthracene (mg/kg)	Fluoranthene (mg/kg)	Fluorene (mg/kg)	Indeno (1,2,3-cd) Pyrene (mg/kg)	Pyrene (mg/kg)	1-Methyl - Naphthalene (mg/kg)	2-Methyl- Naphthalene (mg/kg)
ECMC Table 915-1 Limits (Residential SSL)			360	1800	1.1	0.11	1.1	11	110	0.11	240	240	1.1	180	18	24
ECMC Table 915-1 Limits (Protection of Groundwater SSL)			0.55	5.8	0.011	0.24	0.3	2.9	9	0.096	8.9	0.54	0.98	1.3	0.006	0.019
SS1	2/18/2026	2	Not Detected	Not Detected	Not Detected	Not Detected	Not Detected	Not Detected	Not Detected	Not Detected	<0.010	Not Detected	Not Detected	Not Detected	0.00667	<0.010
SS2	2/18/2026	2	Not Detected	Not Detected	Not Detected	Not Detected	Not Detected	Not Detected	Not Detected	Not Detected	Not Detected	Not Detected	Not Detected	Not Detected	0.00799	<0.010
SS3	2/18/2026	2	Not Detected	Not Detected	Not Detected	Not Detected	Not Detected	Not Detected	<0.010	Not Detected	Not Detected	0.017	Not Detected	Not Detected	0.02030	0.024
SS4	2/18/2026	2	Not Detected	Not Detected	Not Detected	Not Detected	Not Detected	Not Detected	Not Detected	Not Detected	<0.010	Not Detected	Not Detected	Not Detected	0.01400	0.016
SS5	2/18/2026	2	Not Detected	Not Detected	Not Detected	Not Detected	Not Detected	Not Detected	Not Detected	Not Detected	<0.010	Not Detected	Not Detected	Not Detected	0.00443	<0.010
SS6	2/18/2026	2	Not Detected	Not Detected	Not Detected	Not Detected	Not Detected	Not Detected	0.019	Not Detected	Not Detected	0.042	Not Detected	0.012	0.01300	0.013
SS7	2/18/2026	2	Not Detected	Not Detected	Not Detected	Not Detected	Not Detected	Not Detected	Not Detected	Not Detected	Not Detected	Not Detected	Not Detected	Not Detected	<0.00313	Not Detected
SS8	2/18/2026	2	Not Detected	Not Detected	Not Detected	Not Detected	Not Detected	Not Detected	Not Detected	Not Detected	Not Detected	Not Detected	Not Detected	Not Detected	<0.00313	<0.010
SS9	2/18/2026	12	Not Detected	Not Detected	Not Detected	Not Detected	Not Detected	Not Detected	Not Detected	Not Detected	Not Detected	Not Detected	Not Detected	Not Detected	Not Detected	Not Detected
SS10	2/18/2026	12	Not Detected	Not Detected	Not Detected	Not Detected	Not Detected	Not Detected	Not Detected	Not Detected	Not Detected	Not Detected	Not Detected	Not Detected	Not Detected	<0.010
SS11	2/18/2026	12	Not Detected	Not Detected	Not Detected	Not Detected	Not Detected	Not Detected	Not Detected	Not Detected	Not Detected	Not Detected	Not Detected	Not Detected	Not Detected	Not Detected
SS12	2/18/2026	12	<0.010	Not Detected	Not Detected	Not Detected	Not Detected	Not Detected	Not Detected	Not Detected	Not Detected	Not Detected	<0.010	Not Detected	<0.010	<0.010
SS13	2/18/2026	2	Not Detected	Not Detected	Not Detected	Not Detected	Not Detected	Not Detected	Not Detected	Not Detected	Not Detected	Not Detected	Not Detected	Not Detected	<0.00313	<0.010
SS14	2/18/2026	Background (Surface)	Not Detected	Not Detected	Not Detected	Not Detected	Not Detected	Not Detected	Not Detected	Not Detected	Not Detected	Not Detected	Not Detected	Not Detected	Not Detected	Not Detected
SS15	2/18/2026	Background (Surface)	<0.010	Not Detected	Not Detected	Not Detected	Not Detected	Not Detected	Not Detected	Not Detected	Not Detected	Not Detected	Not Detected	Not Detected	<0.00313	<0.010

*Non-bold values do not exceed ECMC Table 915-1 limit(s) for Protection of Groundwater SSL and Residential SSL.

***Bold** values exceed ECMC Table 915-1 limit(s) for Protection of Groundwater SSL and do not exceed the limit(s) for Residential SSL.

Summary of Soil Suitability for Reclamation

Sample ID	Sample Date	Depth (in)	pH (Standard Units)	EC (mmhos/cm)	SAR (Standard Units)	Boron (mg/L)
ECMC Table 915-1 Soil Suitability Limits			6 - 8.3	<4	<6	2
SS1	2/18/2026	2	7.68	0.94	0.13	0.37
SS2	2/18/2026	2	7.80	0.57	0.05	0.19
SS3	2/18/2026	2	7.83	0.82	0.05	0.26
SS4	2/18/2026	2	7.87	0.48	0.04	0.19
SS5	2/18/2026	2	7.94	0.87	1.11	0.29
SS6	2/18/2026	2	7.87	1.75	0.84	0.41
SS7	2/18/2026	2	7.88	0.57	0.53	0.21
SS8	2/18/2026	2	7.86	1.51	1.51	0.26
SS9	2/18/2026	12	8.20	0.42	1.79	0.16
SS10	2/18/2026	12	8.06	0.41	0.58	0.38
SS11	2/18/2026	12	7.83	0.86	1.16	0.30
SS12	2/18/2026	12	7.77	1.29	1.19	0.22
SS13	2/18/2026	2	7.46	10.40	0.67	0.49
SS14	2/18/2026	Background (Surface)	7.85	0.60	0.04	0.28
SS15	2/18/2026	Background (Surface)	7.91	0.52	0.27	0.45

*Non-bold values do not exceed ECMC Table 915-1 limit(s).

***Bold** values exceed ECMC Table 915-1 limit(s)

Summary of Metals in Soil Chemistry Data												
Sample ID	Sample Date	Depth (in)	Arsenic (mg/kg)	Barium (mg/kg)	Cadmium (mg/kg)	Chromium (VI) (mg/kg)	Copper (mg/kg)	Lead (mg/kg)	Nickel (mg/kg)	Selenium (mg/kg)	Silver (mg/kg)	Zinc (mg/kg)
ECMC Table 915-1 Limits (Residential SSL)			0.68	15000	71	0.3	3100	400	1500	390	390	23000
ECMC Table 915-1 Limits (Protection of Groundwater SSL)			0.29	82	0.38	0.00067	46	14	26	0.26	0.8	370
SS1	2/18/2026	2	2.97	313.33	0.20	<0.08	11.09	7.21	5.98	3.25	<0.25	33.03
SS2	2/18/2026	2	2.72	136.78	0.14	<0.08	9.89	7.18	5.09	3.00	<0.03	27.34
SS3	2/18/2026	2	2.76	155.32	0.16	<0.08	10.02	7.28	5.38	3.21	<0.03	28.34
SS4	2/18/2026	2	3.92	585.23	0.17	<0.08	11.30	8.91	6.57	3.67	<0.03	30.83
SS5	2/18/2026	2	3.57	318.32	0.15	Not Detected	11.15	7.34	7.05	3.55	<0.25	35.24
SS6	2/18/2026	2	2.72	293.36	0.13	Not Detected	9.99	5.36	5.00	2.78	<0.25	22.90
SS7	2/18/2026	2	3.51	2749.28	0.16	<0.08	11.40	6.56	6.21	3.21	<0.25	32.80
SS8	2/18/2026	2	2.34	392.13	0.09	Not Detected	9.10	4.31	4.06	2.24	<0.03	19.97
SS9	2/18/2026	12	3.23	121.55	0.08	<0.08	10.46	4.47	5.45	3.05	<0.03	31.18
SS10	2/18/2026	12	3.54	228.97	0.12	Not Detected	10.54	6.35	6.13	3.41	<0.25	28.16
SS11	2/18/2026	12	2.96	157.39	0.12	Not Detected	9.83	5.94	5.57	2.85	<0.03	25.75
SS12	2/18/2026	12	3.19	1731.16	0.14	Not Detected	11.69	6.45	5.87	2.89	<0.03	30.48
SS13	2/18/2026	2	3.00	305.49	0.10	Not Detected	10.06	5.46	5.64	3.18	<0.25	24.62
SS14	2/18/2026	Background (Surface)	3.48	184.80	0.21	<0.08	12.00	9.40	7.09	4.10	<0.25	33.98
SS15	2/18/2026	Background (Surface)	2.15	150.51	0.09	Not Detected	9.05	4.36	3.81	2.16	<0.03	19.20
1.25x Maximum Background Concentration			4.35	231	0.26	NA	15	11.75	8.86	5.13	NA	42.48

*Non-bold values do not exceed ECMC Table 915-1 limit(s) for Protection of Groundwater SSL and Residential SSL and/or do not exceed the maximum background concentrations.

***Bold** values exceed ECMC Table 915-1 limit(s) for Protection of Groundwater SSL and do not exceed the limit(s) for Residential SSL.

Summary of Resampling Due to High EC at SS13			
Sample ID	Sample Date	Depth (in)	EC (mmhos/cm)
ECMC Table 915-1 Soil Suitability Limits			<4
SS16	3/24/2026	6	1.00
SS17	3/24/2026	6	0.70
SS18	3/24/2026	6	1.53
SS19	3/24/2026	Background (Surface)	1.42
SS20	3/24/2026	Background (Surface)	0.58
SS21	3/24/2026	Background (Surface)	0.64

*Non-bold values do not exceed ECMC Table 915-1 limit(s).

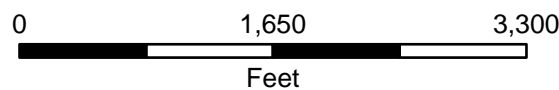
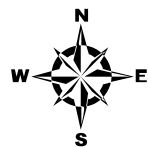
***Bold** values exceed ECMC Table 915-1 limit(s)



Spill/Release Location Map

Critter Creek 16 LACT

SECTION 16, TOWNSHIP 11N, RANGE 63W
WELD COUNTY, CO



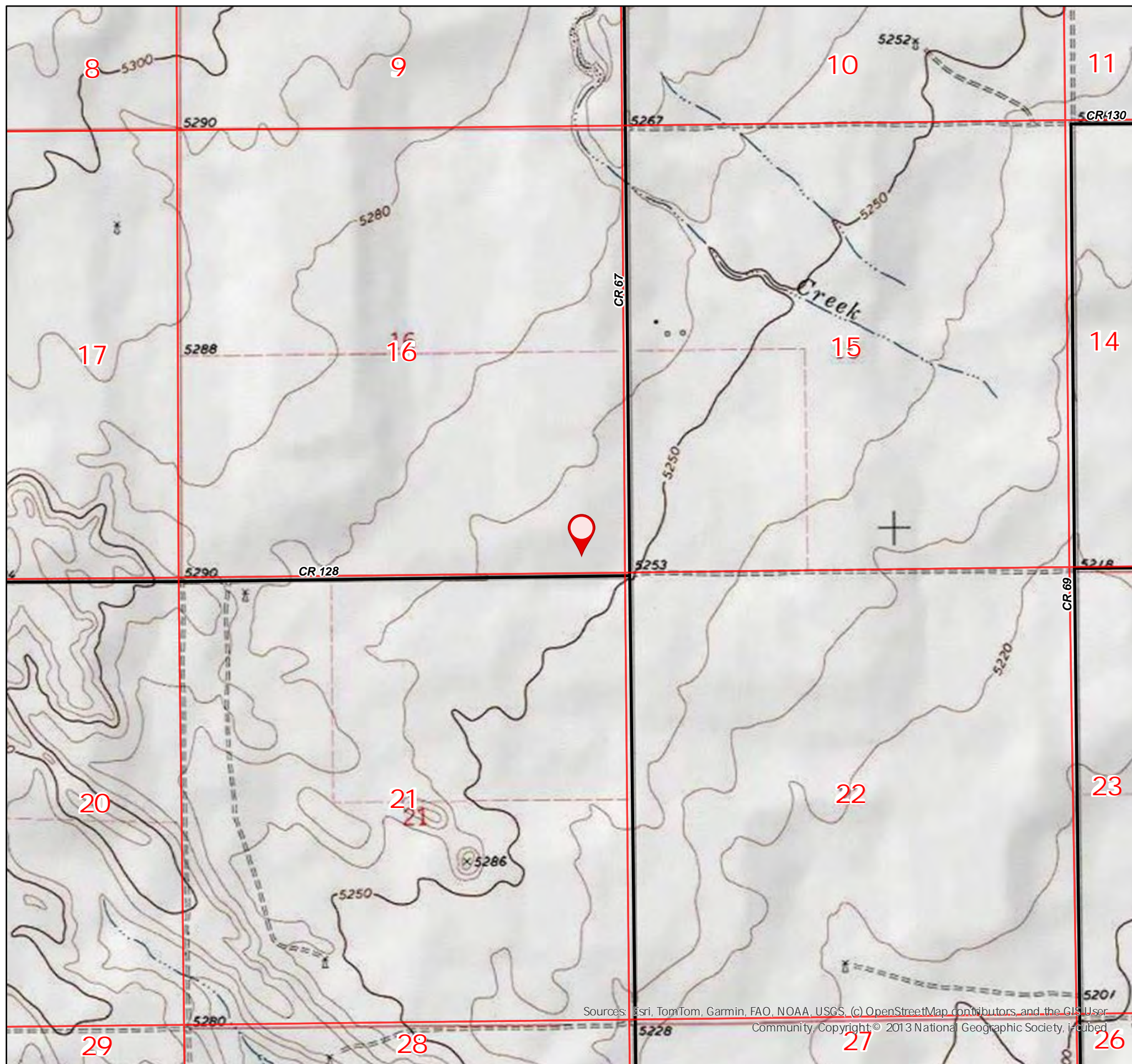
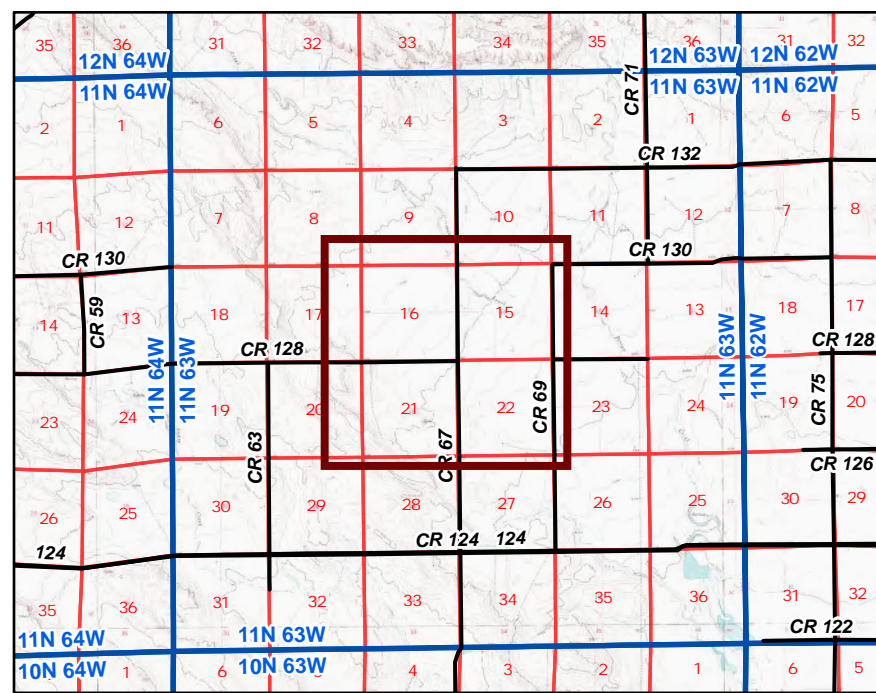
Prepared by:



Editor: nwilson
File: SMP_Spill_Location_Map_v1

Scale: 1:15,000
Date: 1/22/2026

- Spill/Release Location
- Weld Local
- Section
- Township



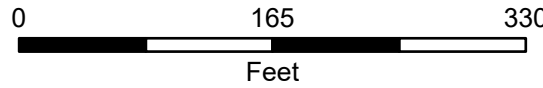
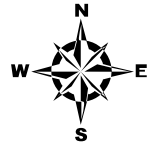
Sources: Esri, TomTom, Garmin, FAO, NOAA, USGS, (c) OpenStreetMap contributors, and the GIS User Community. Copyright © 2013 National Geographic Society, Inc.



Excavation Area Map

Critter Creek 16 LACT

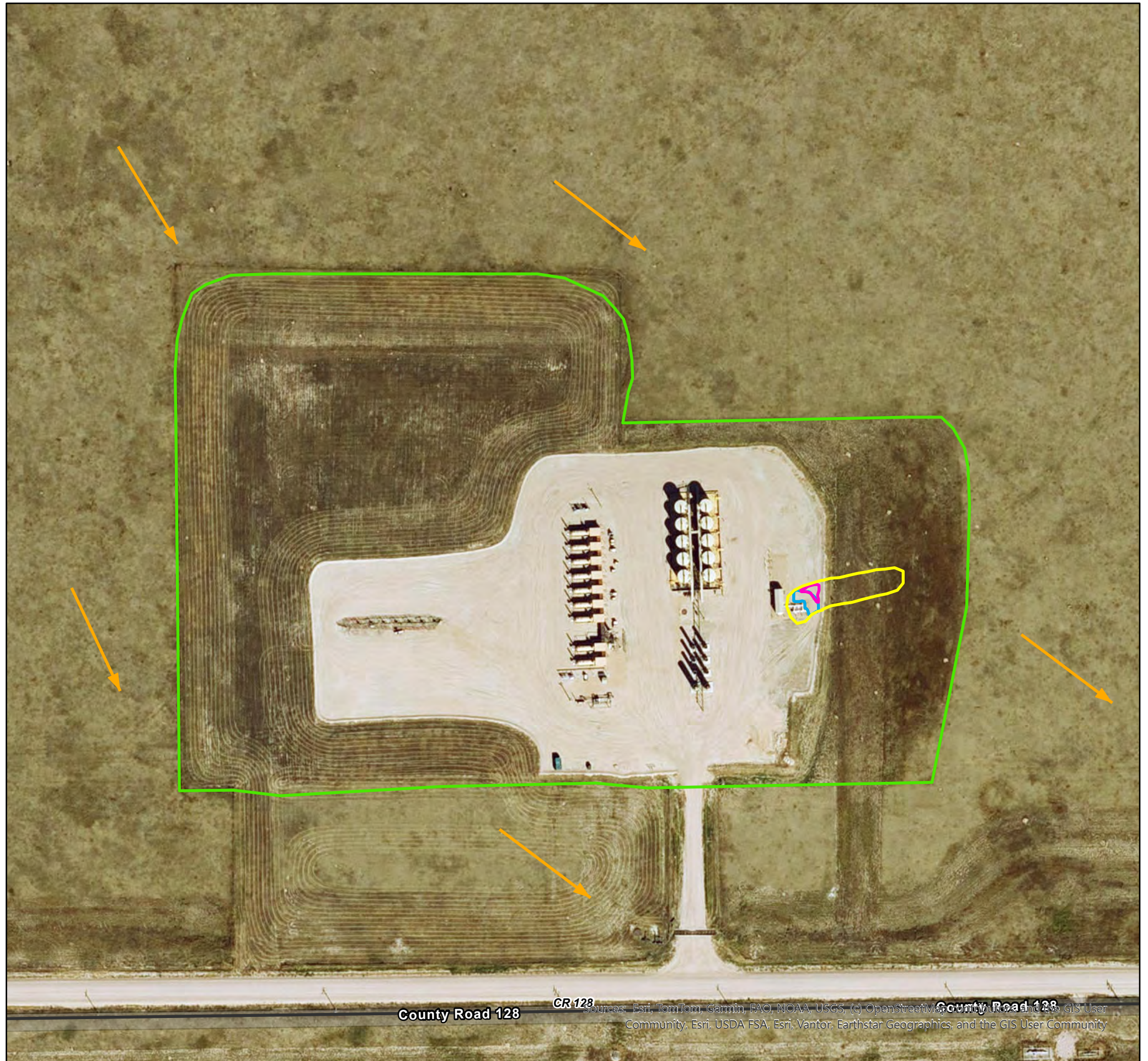
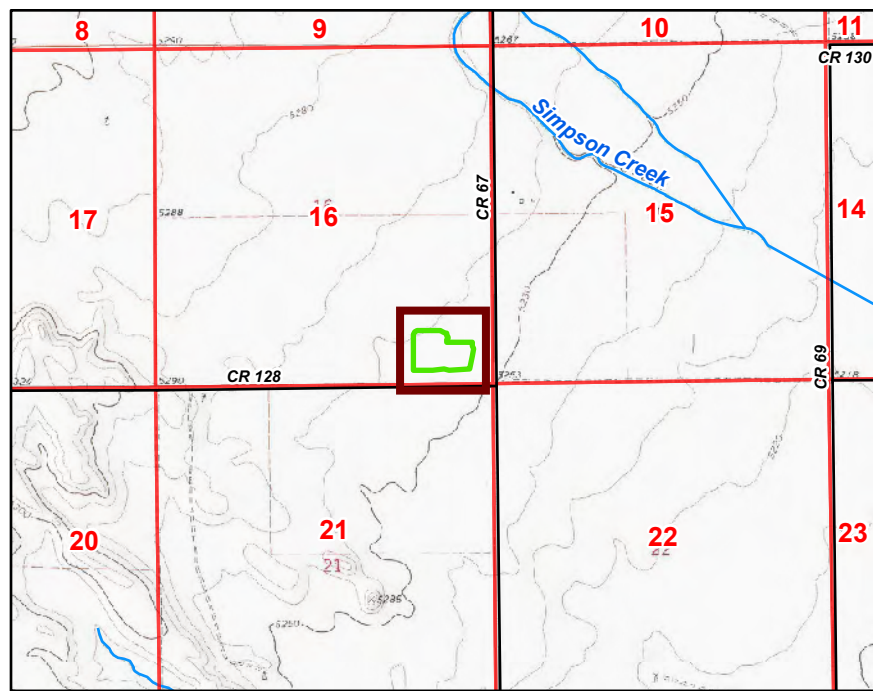
**SECTION 16, TOWNSHIP 11N, RANGE 63W
WELD COUNTY, CO**



Editor: nwilson
File: SMP_Excavation_Map_v1

Prepared by:
Scale: 1:1,500
Date: 3/31/2026

- Flow
- ▭ Pad Disturbance Boundary
- ▭ 2" Excavation Area
- ▭ 6" Excavation Area
- ▭ 12" Excavation Area
- Weld Local

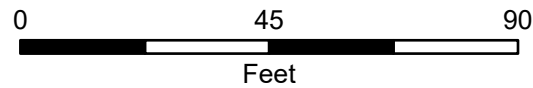
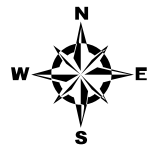




Excavation Area Map

Critter Creek 16 LACT

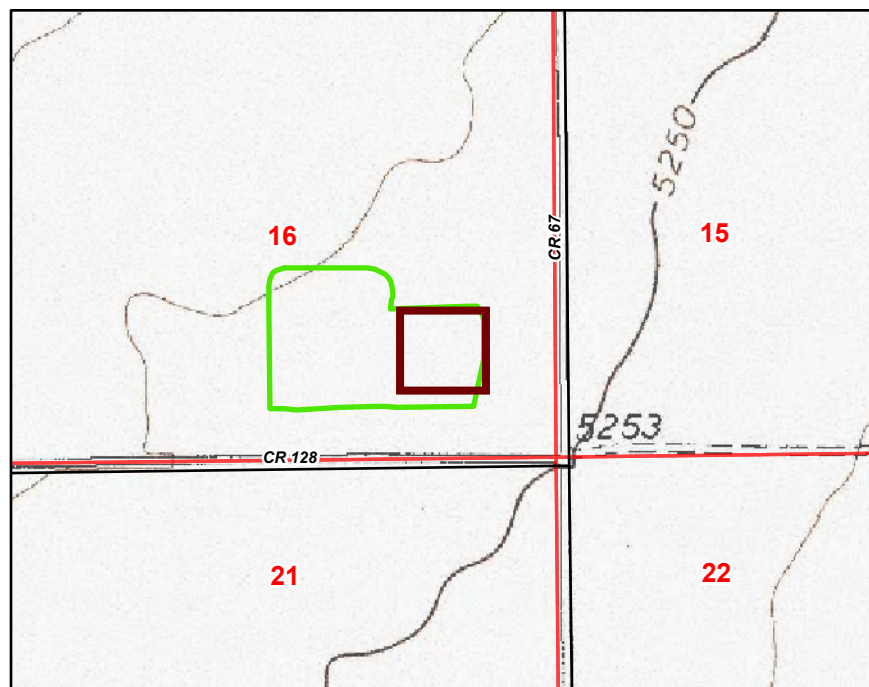
**SECTION 16, TOWNSHIP 11N, RANGE 63W
WELD COUNTY, CO**



Editor: nwilson
File: SMP_Excavation_Map_v1

Prepared by:
Scale: 1:417
Date: 3/31/2026

- Soil Sample Location
- Pad Disturbance Boundary
- 2" Excavation Area
- 6" Excavation Area
- 12" Excavation Area



Sources: Esri, TomTom, Garmin, FAO, NOAA, USGS, (c) OpenStreetMap contributors, and the GIS User Community, Esri, USDA FSA, Esri, Vanior, Earthstar Geographics, and the GIS User Community



Critter Creek 16 SE Pad



Legend

All Well Applications

- Application Denied
- Application Hold
- Application Information Requested
- Application Received
- Application Withdrawn
- Hydrogeology Review Requested
- Permit Canceled
- Permit Expired
- Permit Extended
- Permit Issued
- Well Abandoned
- Well Replaced - Abandonment Req
- Well Constructed
- Well Constructed - Replacement Pe
- Well Replaced
- Other

Location



Notes

2,339 0 1,169 2,339 Feet



1: 14,032



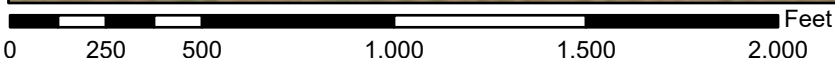
This product is for informational purposes and may not have been prepared for, or be suitable for legal, engineering, or surveying purposes. Users of this information should review or consult the primary data and information sources to ascertain the usability of the information.

Date Prepared: 3/18/2026 4:05:10 PM

National Flood Hazard Layer FIRMMette



104°26'9"W 40°55'12"N



1:6,000

104°25'32"W 40°54'45"N

Basemap Imagery Source: USGS National Map 2023

Legend

SEE FIS REPORT FOR DETAILED LEGEND AND INDEX MAP FOR FIRM PANEL LAYOUT

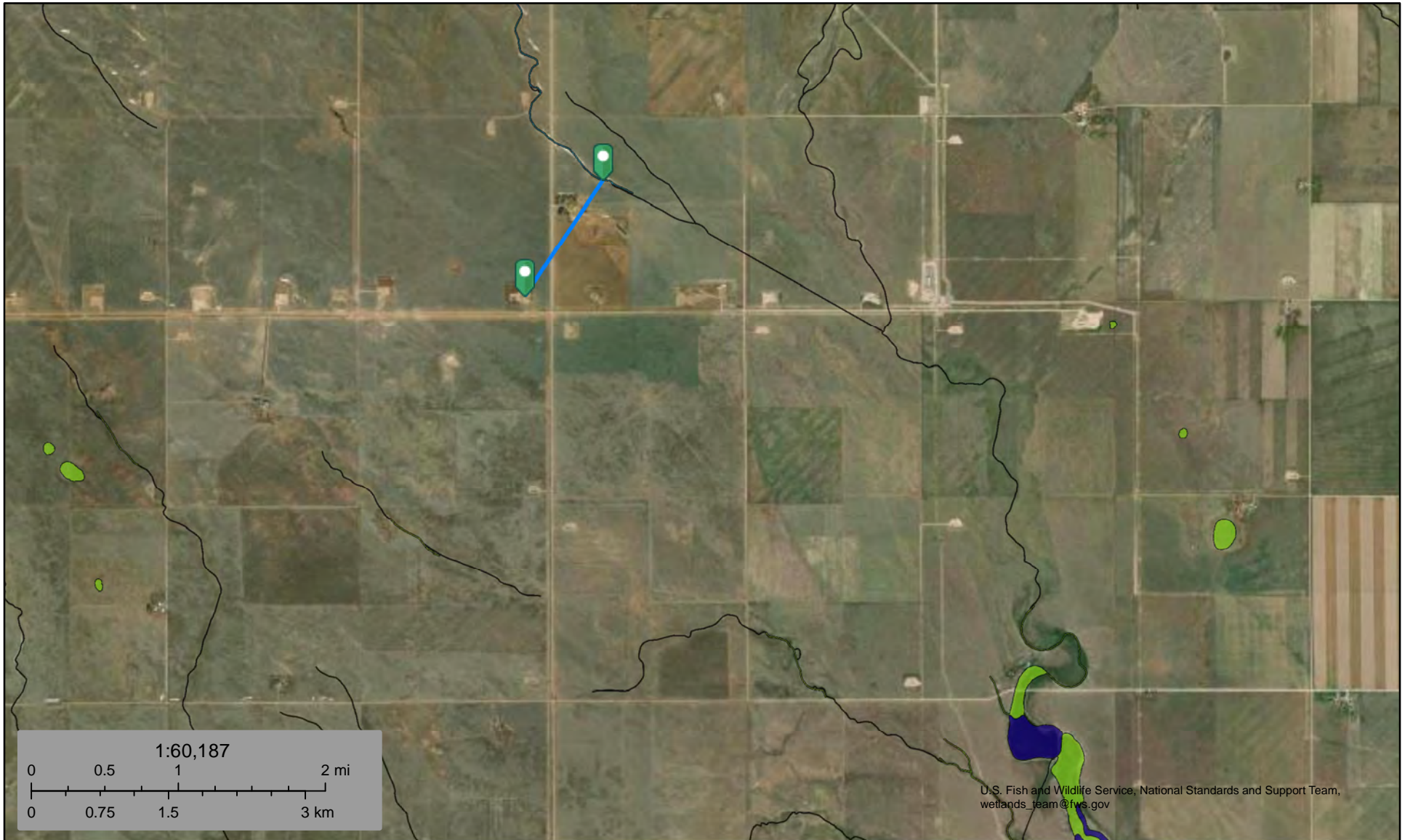
- | | | |
|------------------------------------|--|--|
| SPECIAL FLOOD HAZARD AREAS | | Without Base Flood Elevation (BFE)
<i>Zone A, V, A99</i> |
| | | With BFE or Depth <i>Zone AE, AO, AH, VE, AR</i> |
| | | Regulatory Floodway |
| OTHER AREAS OF FLOOD HAZARD | | 0.2% Annual Chance Flood Hazard, Areas of 1% annual chance flood with average depth less than one foot or with drainage areas of less than one square mile <i>Zone X</i> |
| | | Future Conditions 1% Annual Chance Flood Hazard <i>Zone X</i> |
| | | Area with Reduced Flood Risk due to Levee. See Notes. <i>Zone X</i> |
| | | Area with Flood Risk due to Levee <i>Zone D</i> |
| OTHER AREAS | | NO SCREEN Area of Minimal Flood Hazard <i>Zone X</i> |
| | | Effective LOMRs |
| GENERAL STRUCTURES | | Area of Undetermined Flood Hazard <i>Zone D</i> |
| | | Channel, Culvert, or Storm Sewer |
| | | Levee, Dike, or Floodwall |
| OTHER FEATURES | | 20.2 Cross Sections with 1% Annual Chance |
| | | 17.5 Water Surface Elevation |
| | | Coastal Transect |
| | | Base Flood Elevation Line (BFE) |
| | | Limit of Study |
| MAP PANELS | | Jurisdiction Boundary |
| | | Coastal Transect Baseline |
| | | Profile Baseline |
| | | Hydrographic Feature |
| | | Digital Data Available |
| | | No Digital Data Available |
| | | Unmapped |
| | | The pin displayed on the map is an approximate point selected by the user and does not represent an authoritative property location. |



This map complies with FEMA's standards for the use of digital flood maps if it is not void as described below. The basemap shown complies with FEMA's basemap accuracy standards

The flood hazard information is derived directly from the authoritative NFHL web services provided by FEMA. This map was exported on **3/16/2026 at 7:13 PM** and does not reflect changes or amendments subsequent to this date and time. The NFHL and effective information may change or become superseded by new data over time.

This map image is void if the one or more of the following map elements do not appear: basemap imagery, flood zone labels, legend, scale bar, map creation date, community identifiers, FIRM panel number, and FIRM effective date. Map images for unmapped and unmodernized areas cannot be used for regulatory purposes.



March 18, 2026

Wetlands

- Estuarine and Marine Deepwater
- Freshwater Emergent Wetland
- Freshwater Forested/Shrub Wetland
- Freshwater Pond
- Lake
- Other
- Riverine

This map is for general reference only. The US Fish and Wildlife Service is not responsible for the accuracy or currentness of the base data shown on this map. All wetlands related data should be used in accordance with the layer metadata found on the Wetlands Mapper web site.



01.21.2026



01.21.2026

Source of Spill/Release
3/4" Nipple on LACT Unit 2



01.21.2026

Initial Cleanup
Hydro-Vac Truck



01.21.2026

Cleanup Activity
12" Excavation Area



02.18.2026

Cleanup Activity
2" Excavation Area



02.18.2026

Cleanup Activity
6" Excavation Area



03.24.2026