

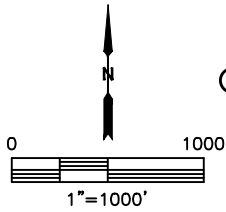
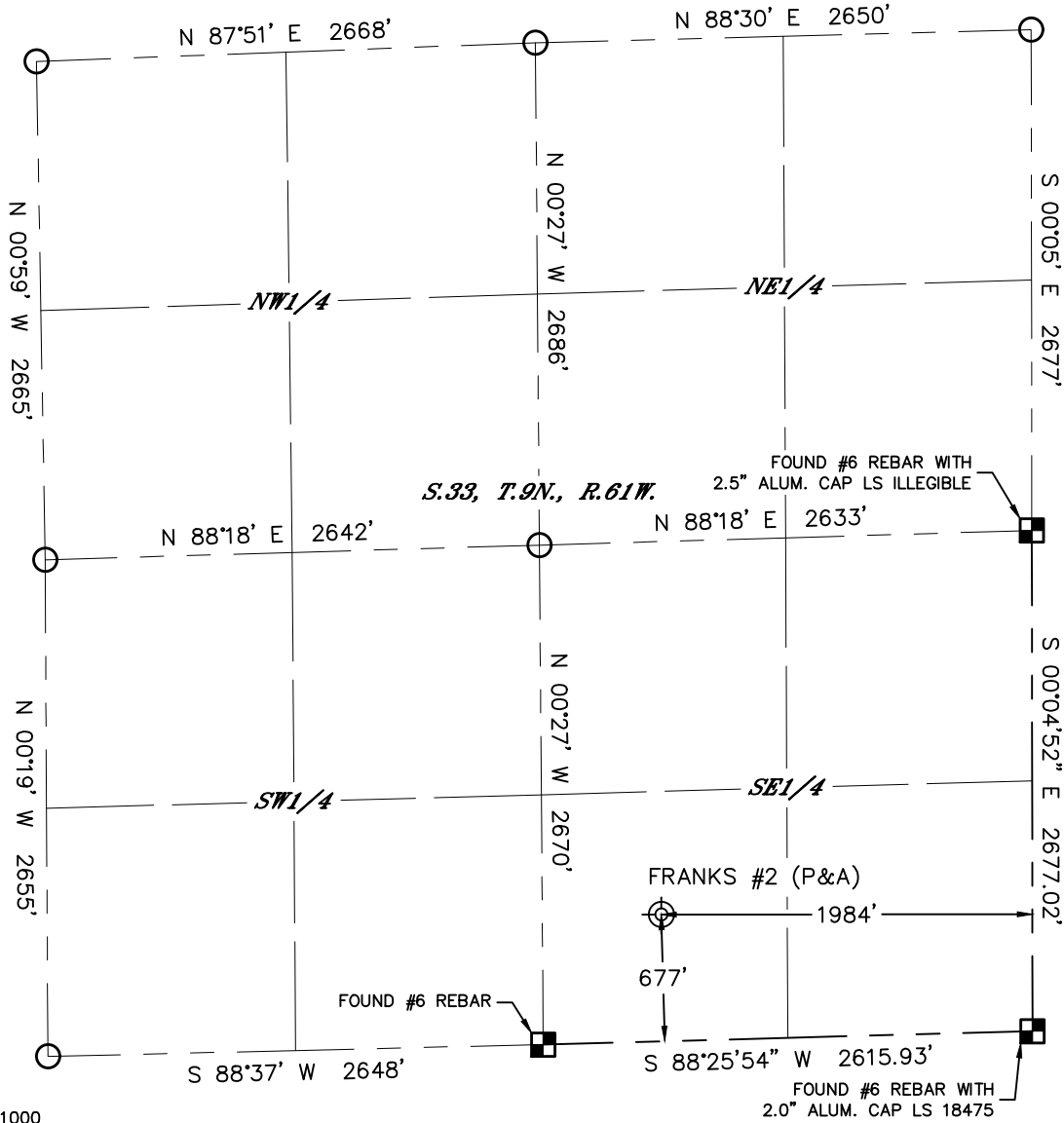


Lat40°, Inc. 6250 W. 10th Street, Unit 2, Greeley, CO 970-515-5294

# PLUGGED AND ABANDONED WELL EXHIBIT

## FRANKS #2

SECTION: 33  
TOWNSHIP: 9N  
RANGE: 61W  
6TH. P.M.  
WELD COUNTY, CO

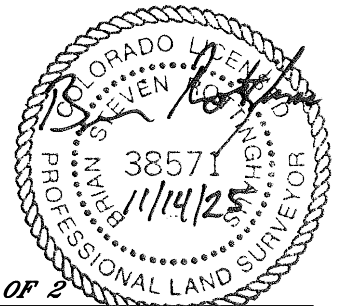


CLIENT: CHEVRON ROCKIES BUSINESS UNIT				LANDMAN: JARED MARTIN			
INSTRUMENT OPERATOR: JESSE CORRAL				SURVEY DATE: 11/7/2025		SURFACE USE: RANGELAND	
SHL FOOTAGE		SHL LAT °	SHL LONG °	SHL PDOP	SHL ELEV (FT.)	SHL 1/4/1/4	SHL S-T-R
677	FSL 1984 FEL	40.69980	-104.20856	1.4	4973	SWSE	33-9-61
DESCRIPTION: FOUND STRONG METAL DETECTOR RING AT NOTED POSITION. ALSO FOUND OTHER SMALLER RINGS, BALL VALVES AND GATE VALVES IN THE AREA.							

NOTE:

- 1) Bearings shown are Grid Bearings of the Colorado State Plane Coordinate System, North Zone, North American Datum 1983. The lineal dimensions as contained herein are based upon the "U.S. Survey Foot."
- 2) Distances to section lines measured at 90 degrees from said section lines.
- 3) Ground elevations are based on an observed GPS elevation (NAVD 1988 DATUM).
- 4) Latitude and Longitude shown are (NAD 83 DATUM).
- 5) Sectional data as shown hereon is from previous surveys and was not verified for this P&A Exhibit.
- 6) This map does not represent a boundary survey.

- LEGEND
- = ALIQUOT MONUMENT AS DESCRIBED
  - = CALCULATED POSITION PER WILD HORSE PC GV33-72HN WELL LOCATION PLAT
  - = ABANDONED WELL



**SHEET 1 OF 2**  
 Brian S. Rottinghaus—On behalf of Lat40°, Inc.  
 Colorado Licensed Professional Land Surveyor No. 38571  
 DATE: 11/14/2025  
 PROJECT#: 2025368



Lat40°, Inc. 6250 W. 10th Street, Unit 2, Greeley, CO 970-515-5294

# PLUGGED AND ABANDONED WELL EXHIBIT

FRANKS #2

SECTION: 33  
TOWNSHIP: 9N  
RANGE: 61W  
6TH. P.M.  
WELD COUNTY, CO  
DATE: 11/7/2025



VIEW NORTH



VIEW WEST



VIEW EAST



VIEW SOUTH