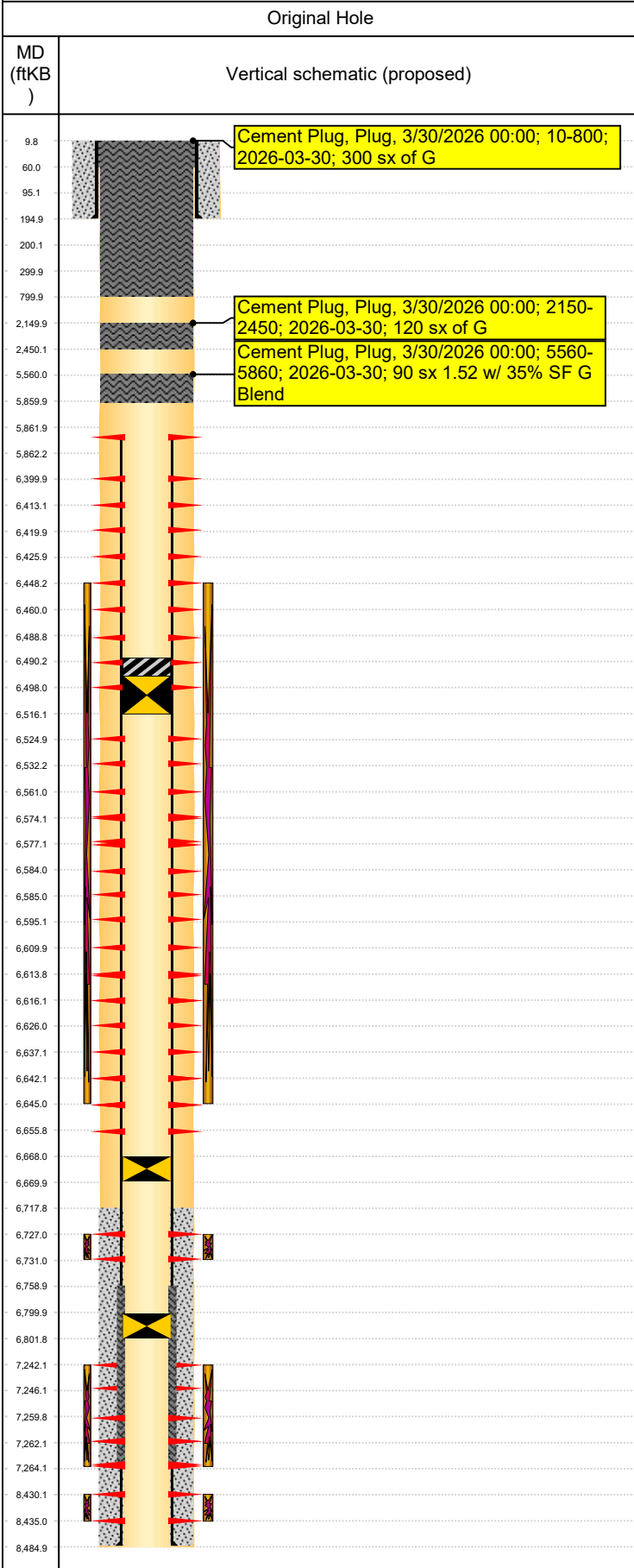




# Proposed PA WBD - Vertical

Well Name: FRANKS 02



Well Header									
Surface UWI 0512310091		Business Unit Rockies		Gov Auth Dist		Prod Tree Loc			
Orig. KB to Gnd (ft) 10.00		Original Spud Date 10/22/1980		Abandon Date		Well Sub-Status		High... N	
Comment Operator: Industrial Gas Associates Inc									
Geologic Horizons									
Formation Name Fox Hills						Final Top MD (ftKB) 700.0			
Formation Name Pierre (Upper) Aquifer Base						Final Top MD (ftKB) 1,830.0			
Formation Name A_Sand-Top_Prod						Final Top MD (ftKB) 2,450.0			
Formation Name Niobrara						Final Top MD (ftKB) 6,475.0			
Formation Name J Sand						Final Top MD (ftKB) 7,242.0			
Formation Name Lyons						Final Top MD (ftKB) 8,430.0			
Congressional Location									
Quarter 3	Quarter 4	Section	Township	Twnshp N/...	Range	Rng E/W Dir	Latitude (°)	Longitude (°)	
Wellbore Sections									
Section Des		Hole Size (in)		Top Depth (ftKB)		Btm Depth (ftKB)			
Surface		12 1/4		10.0		195.0			
Production		7 7/8		195.0		8,504.0			
Casing Strings									
Csg Des		Run Date	OD (in)	Wt/Len (lb/ft)	Grade	Top Depth (MD) (ftKB)	Set Depth (MD) (ftKB)		
Surface		10/24/1980	8 5/8	24.00	J-55	10	195		
Production Casing		11/7/1980	4 1/2	11.60	J-55	10	8485		
Cement									
Des		Start Date		Top (ftKB)		Btm (ftKB)			
Surface Casing Cement		10/25/1980		10.0		195.0			
Production Casing Cement		11/7/1980		6,718.0		8,485.0			
Cement Squeeze		1/22/1981		6,759.0		7,264.0			
Cement Plug		7/20/1992		200.0		300.0			
Cement Plug		7/20/1992		95.0		200.0			
Cement Plug		7/20/1992		10.0		60.0			
Stim/Frac Summary									
Min Top Depth (ftKB) 7,242.0				Max Btm Depth (ftKB) 8,435.0					
Min Top Depth (ftKB) 6,727.0				Max Btm Depth (ftKB) 6,731.0					
Min Top Depth (ftKB) 6,448.0				Max Btm Depth (ftKB) 6,645.0					
Perforations									
Linked Zone		Date		Top Depth (ftKB)		Bottom Depth (ftKB)			
		7/20/1992 00:00		5,862.0		5,862.1			
Linked Zone		Date		Top Depth (ftKB)		Bottom Depth (ftKB)			
		9/16/1981 00:00		6,400.0		6,413.0			
Linked Zone		Date		Top Depth (ftKB)		Bottom Depth (ftKB)			
		9/16/1981 00:00		6,420.0		6,426.0			
Linked Zone		Date		Top Depth (ftKB)		Bottom Depth (ftKB)			
		10/23/1981 00:00		6,448.0		6,460.0			
Linked Zone		Date		Top Depth (ftKB)		Bottom Depth (ftKB)			
Niobrara, Original Hole		9/16/1981 00:00		6,489.0		6,498.0			
Linked Zone		Date		Top Depth (ftKB)		Bottom Depth (ftKB)			
Niobrara, Original Hole		9/16/1981 00:00		6,525.0		6,532.0			
Linked Zone		Date		Top Depth (ftKB)		Bottom Depth (ftKB)			
Niobrara, Original Hole		10/23/1981 00:00		6,561.0		6,577.0			
Linked Zone		Date		Top Depth (ftKB)		Bottom Depth (ftKB)			
Niobrara, Original Hole		9/16/1981 00:00		6,574.0		6,584.0			
Linked Zone		Date		Top Depth (ftKB)		Bottom Depth (ftKB)			
Niobrara, Original Hole		10/23/1981 00:00		6,585.0		6,595.0			
Linked Zone		Date		Top Depth (ftKB)		Bottom Depth (ftKB)			
Niobrara, Original Hole		9/16/1981 00:00		6,610.0		6,616.0			
Linked Zone		Date		Top Depth (ftKB)		Bottom Depth (ftKB)			
Niobrara, Original Hole		10/23/1981 00:00		6,614.0		6,626.0			
Linked Zone		Date		Top Depth (ftKB)		Bottom Depth (ftKB)			
Niobrara, Original Hole		10/23/1981 00:00		6,637.0		6,645.0			
Linked Zone		Date		Top Depth (ftKB)		Bottom Depth (ftKB)			
Niobrara, Original Hole		9/16/1981 00:00		6,642.0		6,656.0			

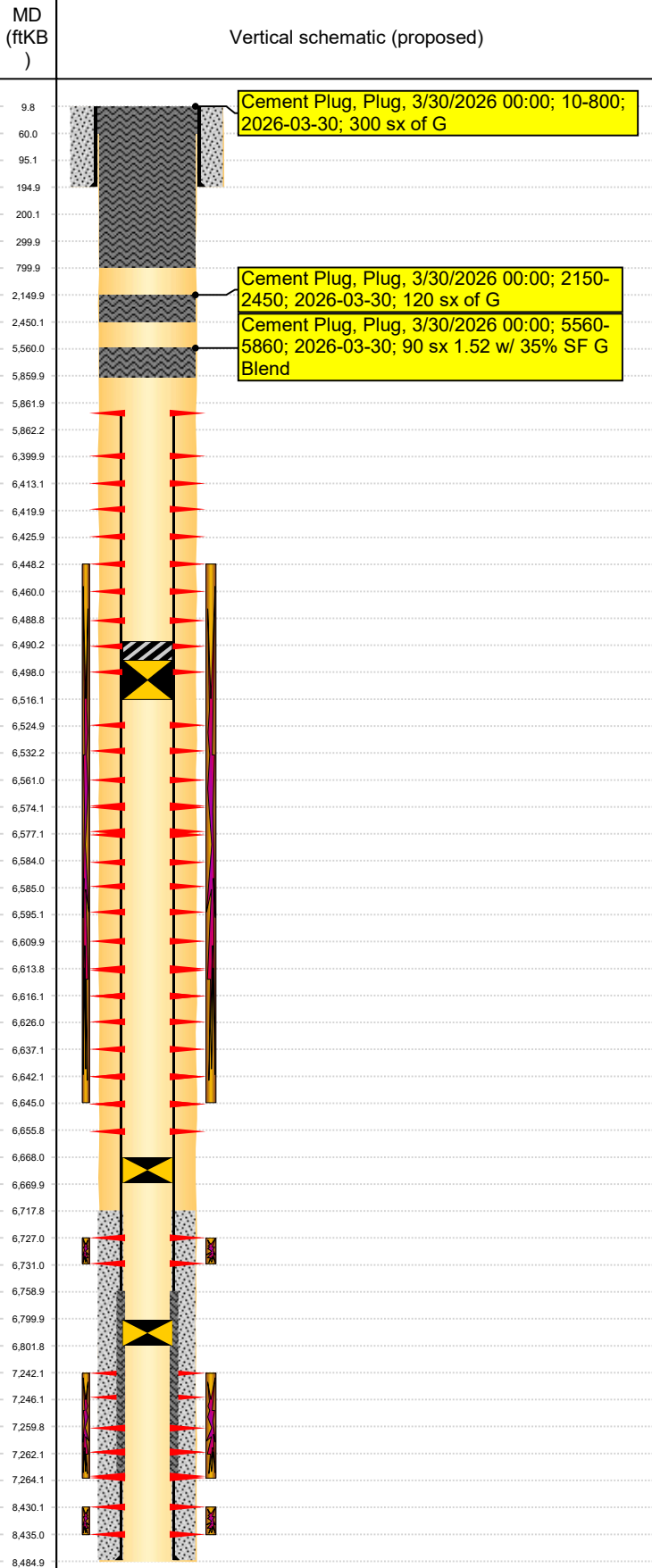


# Proposed PA WBD - Vertical

Well Name: FRANKS 02

Original Hole

### Perforations



Linked Zone	Date	Top Depth (ftKB)	Bottom Depth (ftKB)
Niobrara, Original Hole	5/26/1981 00:00	6,727.0	6,731.0
J Sand, Original Hole	1/22/1981 00:00	7,242.0	7,246.0
J Sand, Original Hole	1/22/1981 00:00	7,260.0	7,264.0
J Sand, Original Hole	1/22/1981 00:00	7,262.0	7,264.0
Lyons, Original Hole	1/22/1981 00:00	8,430.0	8,435.0

### Other In Hole

Run Date	Des	Make	OD (in)	Top (ftKB)	Btm (ftKB)
5/26/1981	Cast Iron Bridge Plug		4	6,800.0	6,802.0
9/16/1981	Cast Iron Bridge Plug		4	6,668.0	6,670.0
7/20/1992	Cast Iron Bridge Plug w/ 2 SX Cement		4	6,490.0	6,516.0

### Logs

Date	Type	Depth Top (MD) (ftKB)	Btm (ftKB)