

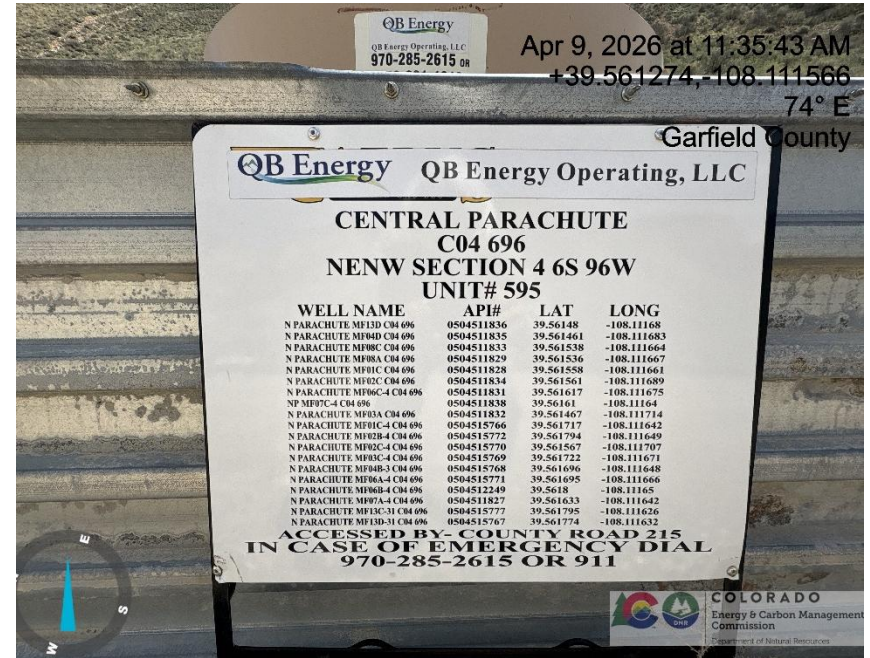
# Inspection/Audit Photos

Location Name: QB ENERGY OPERATING LLC N. PARACHUTE MF07C-4 C04 696 Pad

Location # 311638



Apr 9, 2026 at 11:22:25 AM  
 +39.560928, -108.112051  
 27° NE  
 Garfield County



QB Energy  
 QB Energy Operating, LLC  
 970-285-2615 OR

Apr 9, 2026 at 11:35:43 AM  
 +39.561274, -108.111566  
 74° E  
 Garfield County

**QB Energy** QB Energy Operating, LLC

**CENTRAL PARACHUTE  
 C04 696  
 NEW SECTION 4 6S 96W  
 UNIT# 595**

WELL NAME	API#	LAT	LONG
N PARACHUTE MF13D C04 696	0504511836	39.56148	-108.11168
N PARACHUTE MF10D C04 696	0504511835	39.561461	-108.111683
N PARACHUTE MF08C C04 696	0504511833	39.561538	-108.111664
N PARACHUTE MF08A C04 696	0504511829	39.561536	-108.111667
N PARACHUTE MF07C C04 696	0504511828	39.561558	-108.111661
N PARACHUTE MF02C C04 696	0504511834	39.561561	-108.111689
N PARACHUTE MF06C-4 C04 696	0504511831	39.561617	-108.111675
NP MF07C-4 C04 696	0504511838	39.56161	-108.11164
N PARACHUTE MF03A C04 696	0504511832	39.561467	-108.111714
N PARACHUTE MF01C-4 C04 696	0504515766	39.561717	-108.111642
N PARACHUTE MF02B-4 C04 696	0504515772	39.561794	-108.111649
N PARACHUTE MF02C-4 C04 696	0504515770	39.561567	-108.111707
N PARACHUTE MF03C-4 C04 696	0504515769	39.561722	-108.111671
N PARACHUTE MF04B-3 C04 696	0504515768	39.561696	-108.111648
N PARACHUTE MF04A C04 696	0504515771	39.561695	-108.111666
N PARACHUTE MF06B-4 C04 696	0504512249	39.5618	-108.11165
N PARACHUTE MF07A-4 C04 696	0504511827	39.561633	-108.111642
N PARACHUTE MF13C-31 C04 696	0504515777	39.561795	-108.111626
N PARACHUTE MF13D-31 C04 696	0504515767	39.561774	-108.111632

**ACCESSED BY COUNTY ROAD 215  
 IN CASE OF EMERGENCY DIAL  
 970-285-2615 OR 911**

Photo # 6516 From entrance to location

Photo # 6517 Location

# Inspection/Audit Photos

Location Name: QB ENERGY OPERATING LLC N. PARACHUTE MF07C-4 C04 696 Pad

Location # 311638



Photo # 6518 Location



Photo # 6519 Location

# Inspection/Audit Photos

Location Name: QB ENERGY OPERATING LLC N. PARACHUTE MF07C-4 C04 696 Pad

Location # 311638



Photo # 6520 Location

Photo # 6521 Location

# Inspection/Audit Photos

Location Name: QB ENERGY OPERATING LLC N. PARACHUTE MF07C-4 C04 696 Pad

Location # 311638

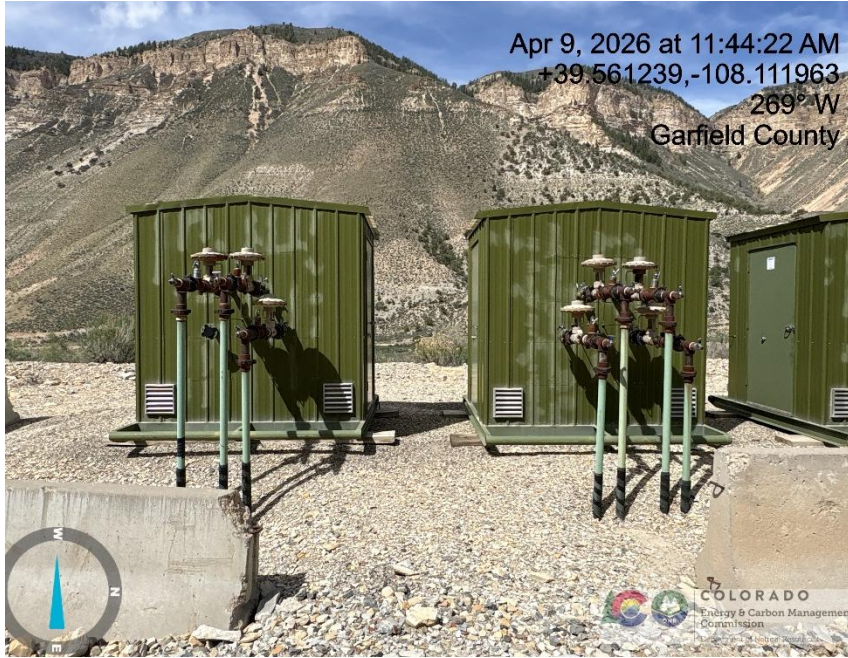


Photo # 6522 Location



Photo # 6523 Location

# Inspection/Audit Photos

Location Name: QB ENERGY OPERATING LLC N. PARACHUTE MF07C-4 C04 696 Pad

Location # 311638

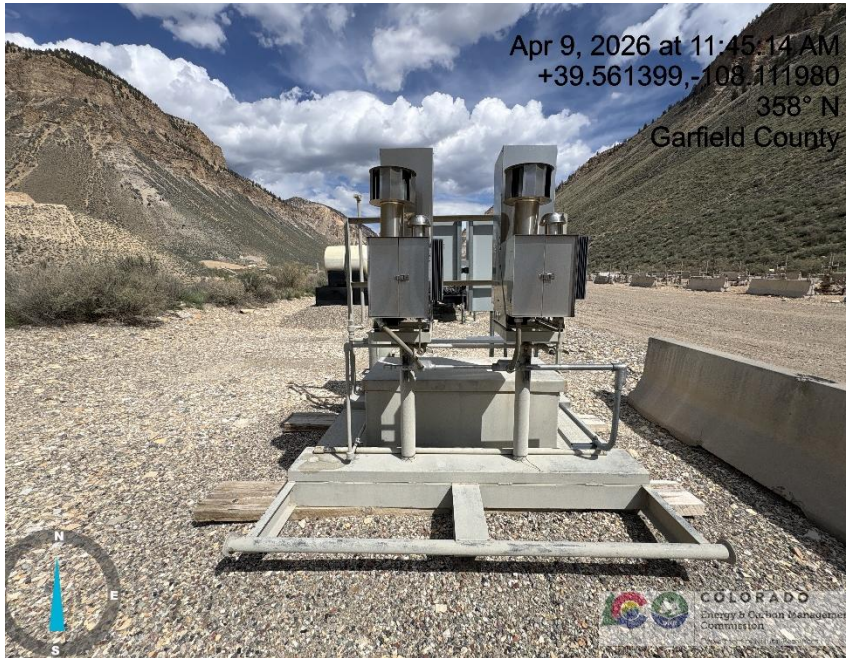


Photo # 6524 Location



Photo # 6525 Location

# Inspection/Audit Photos

Location Name: QB ENERGY OPERATING LLC N. PARACHUTE MF07C-4 C04 696 Pad

Location # 311638

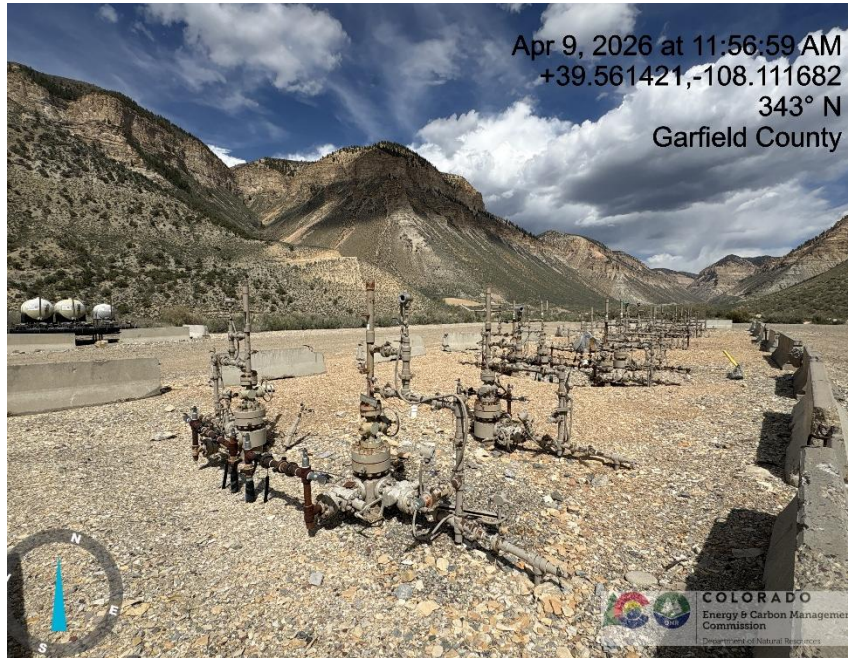


Photo # 6526 Location



Photo # 6527 Location

# Inspection/Audit Photos

Location Name: QB ENERGY OPERATING LLC N. PARACHUTE MF07C-4 C04 696 Pad

Location # 311638



Apr 9, 2026 at 11:50:37 AM  
+39.561561,-108.111421  
291° W  
Garfield County



Apr 9, 2026 at 11:24:43 AM  
+39.561086,-108.111773  
128° SE  
Garfield County

Photo # 6528 Location

Photo # 6529 Staining near meter house

## Inspection/Audit Photos

Location Name: QB ENERGY OPERATING LLC N. PARACHUTE MF07C-4 C04 696 Pad

Location # 311638



**Photo # 6530 Mechanical Condition - Large amount of external corrosion visible on ball valve (N. PARACHUTE MF07C-4 C04 696 flowline)**

**Photo # 6531 Mechanical Condition - Large amount of external corrosion visible on ball valve (N. PARACHUTE MF07C-4 C04 696 flowline)**

# Inspection/Audit Photos

Location Name: QB ENERGY OPERATING LLC N. PARACHUTE MF07C-4 C04 696 Pad

Location # 311638



Photo # 6532 Damage to secondary containment

Photo # 6533 Damage to secondary containment

## Inspection/Audit Photos

Location Name: QB ENERGY OPERATING LLC N. PARACHUTE MF07C-4 C04 696 Pad

Location # 311638



Photo # 6534 Damage to secondary containment



Photo # 6535 Damage to secondary containment